

Technical Service Bulletin

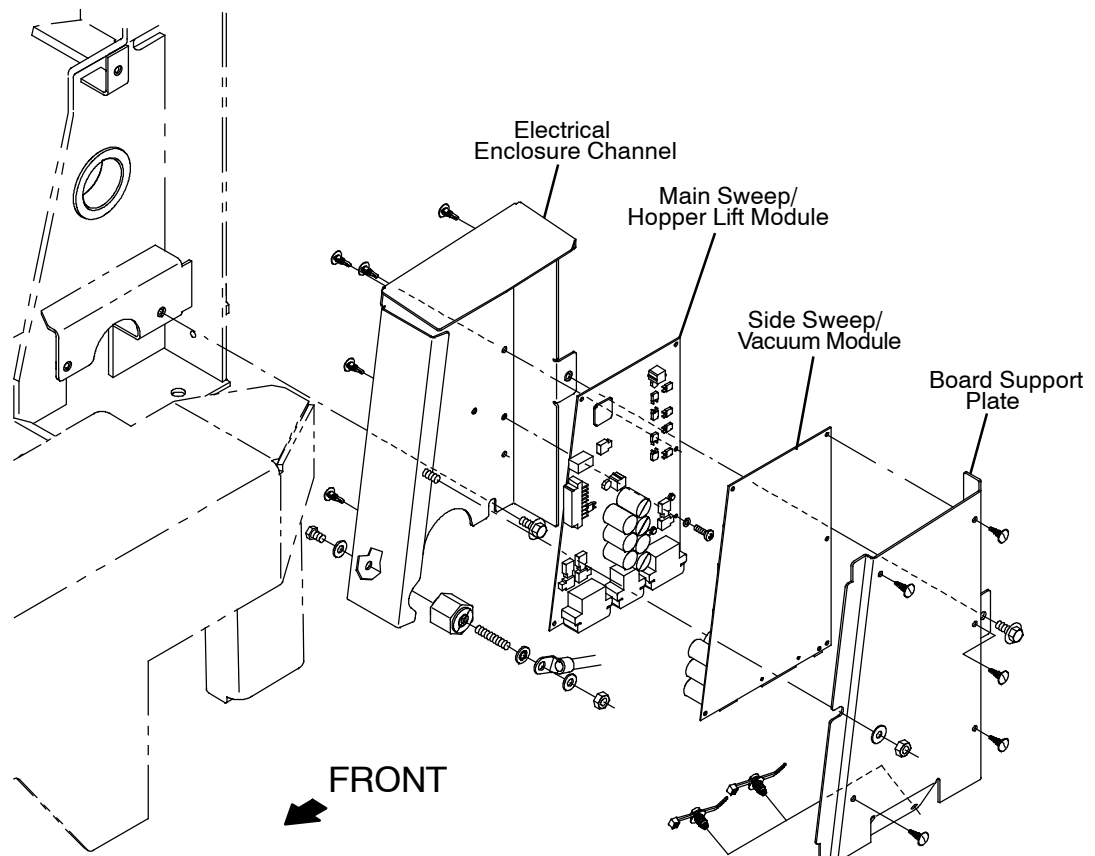
MODEL(S) AFFECTED: M17**SUBJECT:** Damage to Main Sweep/Hopper Lift Module and Side Sweep/Vacuum Module due to Manual Mode being used to troubleshoot machines when pre-charge has failed and secondary contactor has not closed.**PURPOSE:** Check Main Sweep/Hopper Lift Module and Side Sweep/Vacuum Module status lights before entering Manual Mode to troubleshoot sweep systems.**NOTES:** **FOR SAFETY: Before leaving or servicing machine, stop on level surface, turn off machine, remove key, and set parking brake****PROCEDURE:**

1. Remove the left lintel cover from the front frame to access the Main Sweep/Hopper Lift Module and Side Sweep/Vacuum Module.

2. Remove the hardware securing the board support plate to the electrical enclosure channel.

NOTE: To avoid damaging electronic components, a static ground strap must be worn at all times while handling electrical components. Attach other end of static ground strap to machine frame.

3. Carefully pull the board support plate far enough from the electrical enclosure channel to observe the status light on both the Main Sweep/Hopper Lift Module and Side Sweep/Vacuum Module. Do Not break any cables/connections when pulling the board support plate.



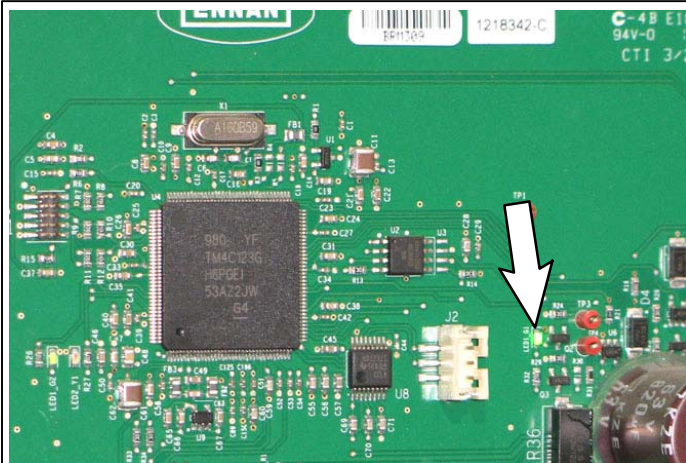
NOTES:
(continued)

4. Observe the status lights on both the Main Sweep/Hopper Lift Module and Side Sweep/Vacuum Module. If the status lights on both modules are flashing either green or yellow the Manual Mode can be used to test sweep functions.

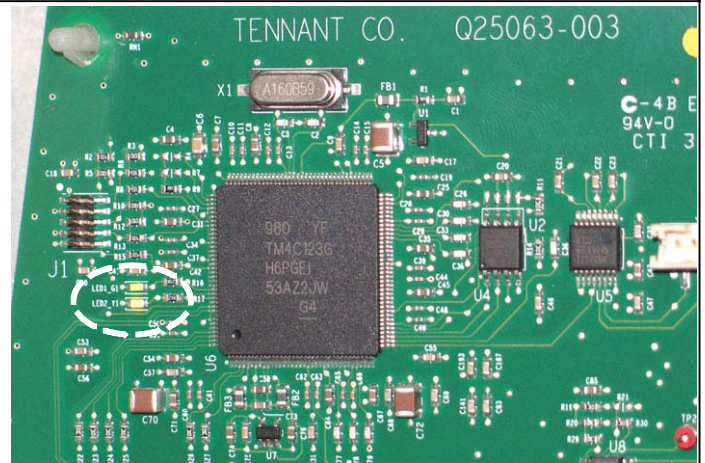
If the status light on the Side Sweep/Vacuum Module is red and/or there are no lights flashing on the Main Sweep/Hopper Lift Module **Do Not** enter Manual Mode to test sweep functions.

5. Turn the key switch OFF for approximately 8 seconds and then turn the key switch ON.

6. Observe the status lights on both the Main Sweep/Hopper Lift Module and Side Sweep/Vacuum Module again. If the status light on the Side Sweep/Vacuum Module is still red and/or there are still no lights flashing on the Main Sweep/Hopper Lift Module **Do Not** enter Manual Mode to test sweep functions and contact the T.A.C. (Technical Assistance Center) for further instructions/ information.



Side Sweep/Vacuum Module Status Lights



Main Sweep/Hopper Lift Module Status Light

QUESTIONS: Contact the T.A.C. (Technical Assistance Center) at (800) 760- 2219 (Tennant Service Representatives) and (800) 553- 8033 extension 2668 (Persons outside Tennant Service Organization).

Warranty Information: Standard terms apply.