

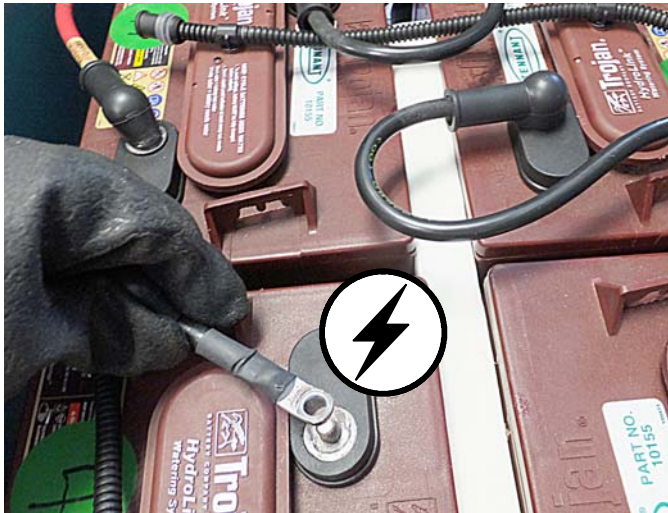
Technical Service Bulletin

MODEL(S) AFFECTED: T300, T300e, T500 and T500e walk-behind scrubbers

SUBJECT: Minor sparking may occur when properly connecting battery cables to batteries.

PURPOSE: Sparking is due to an inrush of current when the control board capacitors charge. This is normal and not an indication of a problem or something that may cause machine damage.

NOTES:



Although sparking may not be avoided, always follow the below procedures when connecting battery cables:



- Keep machine away from flammable liquids, vapors or combustible dusts.
- Wear personal protection equipment.
- Turn the key switch to the off position.
- Use insulated tools when working near batteries.
- Always install battery cables in the proper order, positive first and negative last.
- If model is equipped with a battery disconnect cable connector, plug in the connector last.