

Technical Service Bulletin

MODEL(S) AFFECTED: **Tennant 235E, 355E, 510E, 515E, 8010E, 530E, 6400E, 6550E, 7300, 8300**

SUBJECT: Hurth gearbox repair parts and service

PURPOSE: Internal Hurth gearbox parts are very similar to those of an automobile differential. There is a pinion shaft and gear and a gear ring and axle output shaft. There is a pre-load tension applied to the tapered roller bearings on the shafts. The gear backlash setting is critical to ensuring the gearbox has a long service life.

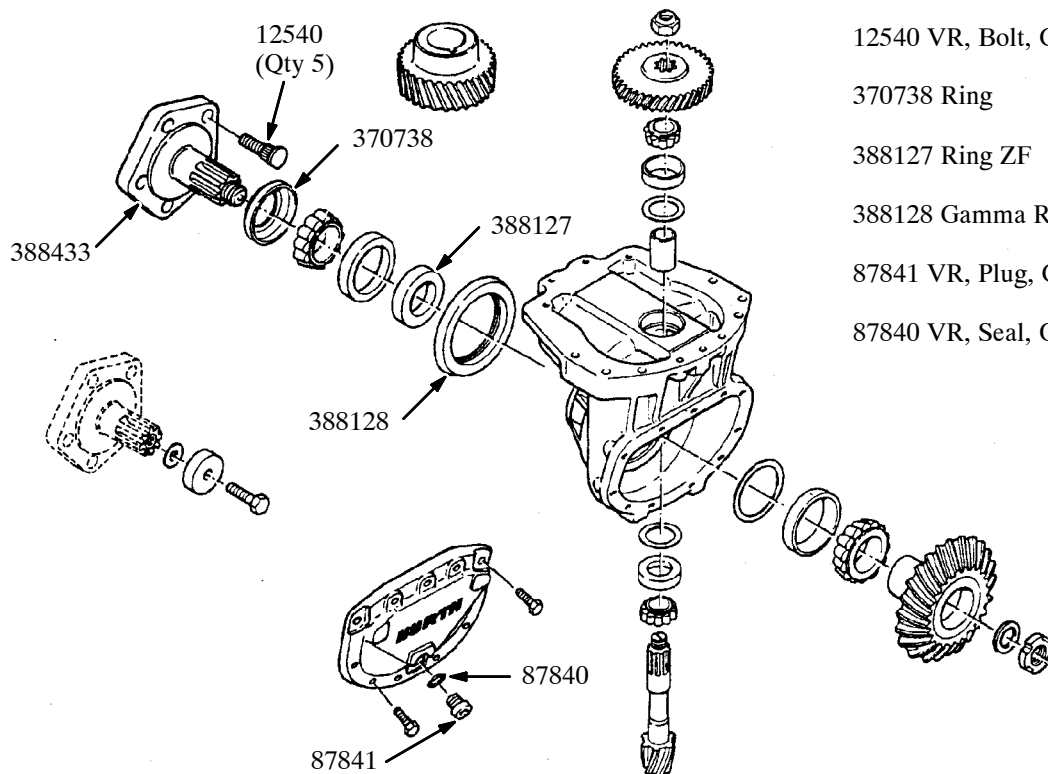
NOTES: If gear lube is leaking from the output drive shaft, check for shaft end play and radial end play. The gear ring and pinion gear backlash is only 0.004-0.006. More movement due to worn internal parts could prematurely wear the seals.

Parts not labeled on the drawings can be ordered direct from ZF Industries Off-Highway Division / Hurth. Phone: 847-478-6827. Have the gearbox ID tag number (HFK250XXXXX) ready when calling.

For units requiring internal repairs or resealing, contact the Hurth Service Department. Phone: 847-478-6878. Gearbox units can be shipped to Hurth for service repairs. Reconditioned units are warranted by Hurth.

Contact the Tennant Customer Service Department at (800) 553-8033 or (763) 513-2850 to order parts. Refer to the diagrams for the part numbers of parts supplied by Tennant.

The following repair parts are available from Tennant:



388433 Wheel Shaft

12540 VR, Bolt, Gearbox, Drive Wheel

370738 Ring

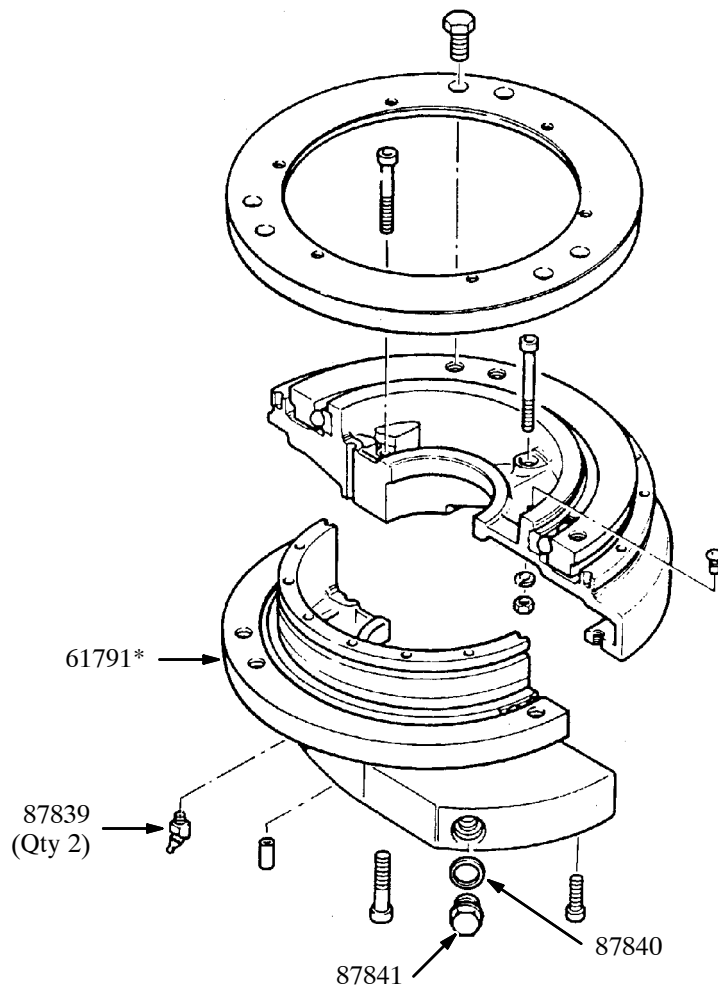
388127 Ring ZF

388128 Gamma Ring ZF

87841 VR, Plug, Gearbox, Drive Wheel

87840 VR, Seal, Org

Hurth Gearbox (Lower Section)



Hurth Gearbox (Upper Section)

61791 VR, Bearing, Gearbox, Drive Wheel

87839 Fitting, Grease

87841 VR, Plug, Gearbox, Drive Wheel

87840 VR, Seal, Org

*Upper bearing housing and bearing (where electric motors are mounted). The following critical steps must be followed when lubricating the bearings:

1. Elevate the wheel completely off the ground.
2. Turn the steering wheel lock to lock to ensure grease is spread to all ball bearings.

Service at least every 200 hours of operation. Service at more frequent intervals if machine is used in severe operating environments.

Gearbox capacity: 2.7 liters of 90 weight gear lube.