



INSTRUCTION BULLETIN

No. 3783
Machine: 6400
Published: 10-96/00
System: OPTIONS

NOTE: DO NOT DISCARD the Parts List from the Instruction Bulletin. Place the Parts List in the appropriate place in your machine manual for future reference. Retaining the Parts List will make it easier to reorder individual parts and will save you the cost of ordering an entire kit.

NOTE: Numbers in parenthesis () are reference numbers for parts listed in Bill of Materials.

Installation Instructions for Kit number 360915

SYNOPSIS / PROBLEM:

This kit contains the parts needed to install the Vacuum Wand kit on the model 6400 sweeper.

Please follow step-by-step instructions.

SPECIAL TOOLS / CONSIDERATIONS: Hand drill. 1/8", 1/4", and 2-1/16" drill bits.

(Estimated time to complete: 3 hours).

INSTALLATION OF VACUUM WAND BRACKET AND ADAPTOR:

(Refer to FIG. 1, 2 and 3)

FOR SAFETY: Before leaving or servicing machine, stop on level surface and set parking brake. Then turn off machine and remove key.

1. Attach finger clips (13) onto vacuum wand brackets (16) using one pan screw (8), four flat washers (4), and one nut (15) per each clip as shown in FIG. 2.
2. Using a vacuum wand bracket (16) as a template, measure and mark mount holes on hopper as shown in FIG. 1.
3. Drill eight 1/8" holes through outside hopper wall on marks made in step 2.

*NOTE: **DO NOT** drill through inside wall of hopper.*

4. Install vacuum wand brackets (16) with pan screws (17) provided. (Refer to FIG.2).
5. Snap wand (11) and hose (12) into finger clips (13). (Refer to FIG.2).
6. Drill holes for vacuum wand adaptor (1) on the operator side of the machine according to dimensions in FIG. 3.

NOTE: Use vacuum wand adaptor (1) as a template when drilling holes.

7. Install jack chain (6) to the top of drain plug (8) using cable clamp (7) and hardware (9), (10) provided. (Refer to FIG.2).
8. Open access door to access hopper interior. (Refer to FIG.2).

NOTE: Hopper interior can also be accessed by removing cover plate, or headlight, if present.

9. Install vacuum wand seal (2) and vacuum wand adaptor (1) and with hardware provided (3), (4), and (5).

NOTE: Place last link on jack chain onto one of upper adaptor screws (3) before tightening to keep plug from becoming lost when vacuum wand is in use.

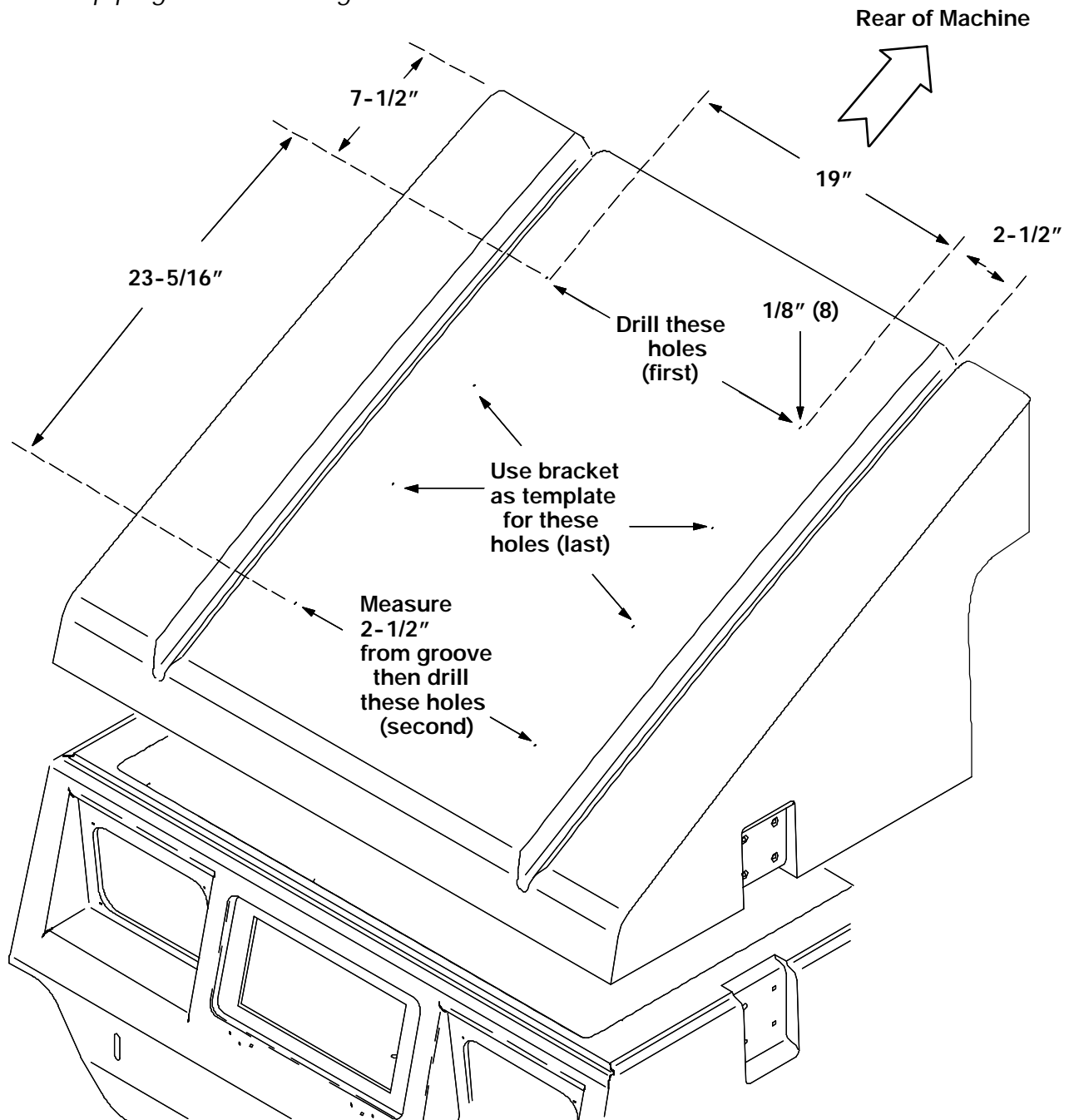


FIG. 1 - Location of Holes for Mounting Vacuum Wand Bracket

10. Replace headlight plate or headlight, if removed in step 7.
11. Insert drain plug (8) into vacuum wand adaptor (1).

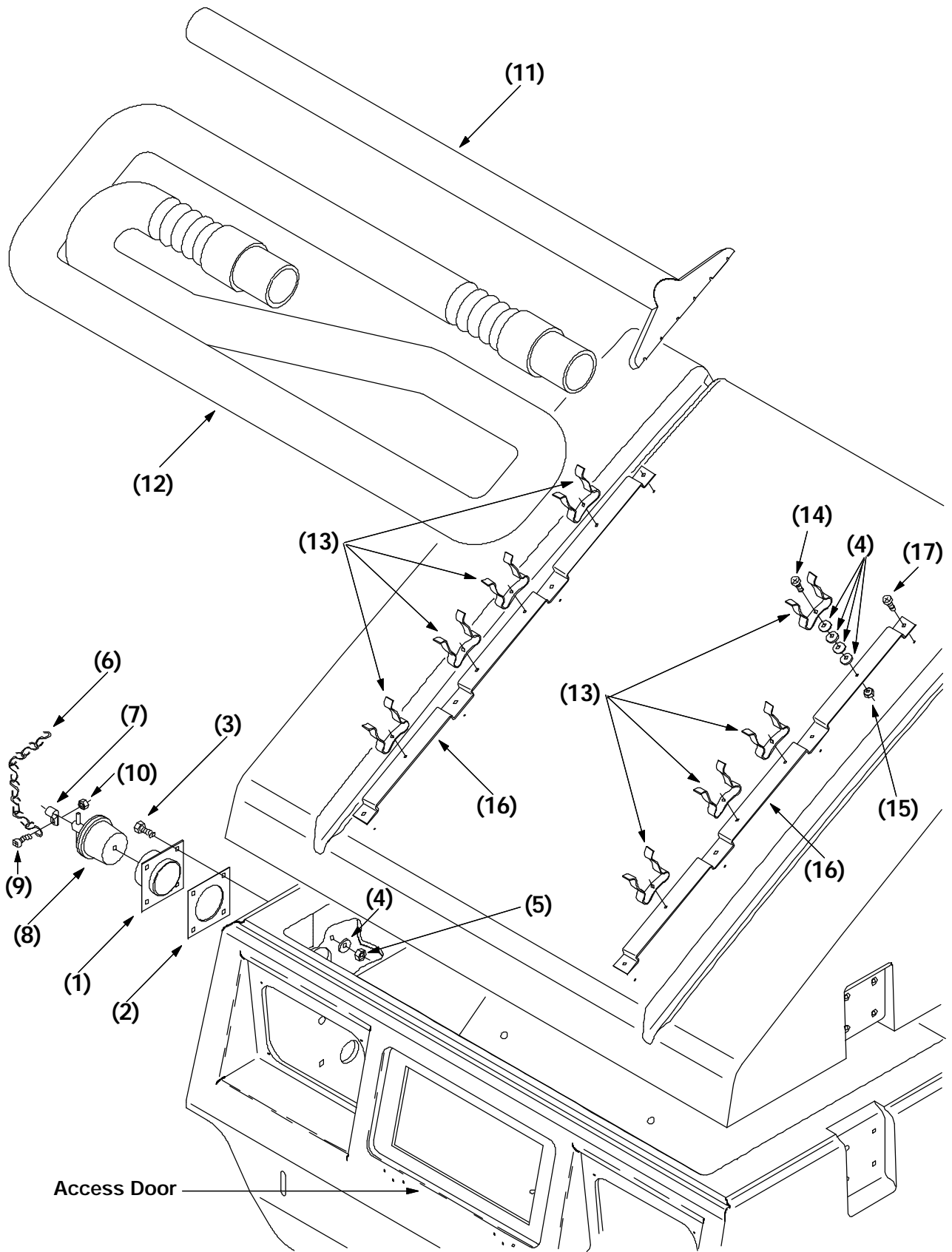


FIG. 2 - Installation of Vacuum Wand Bracket and Adaptor

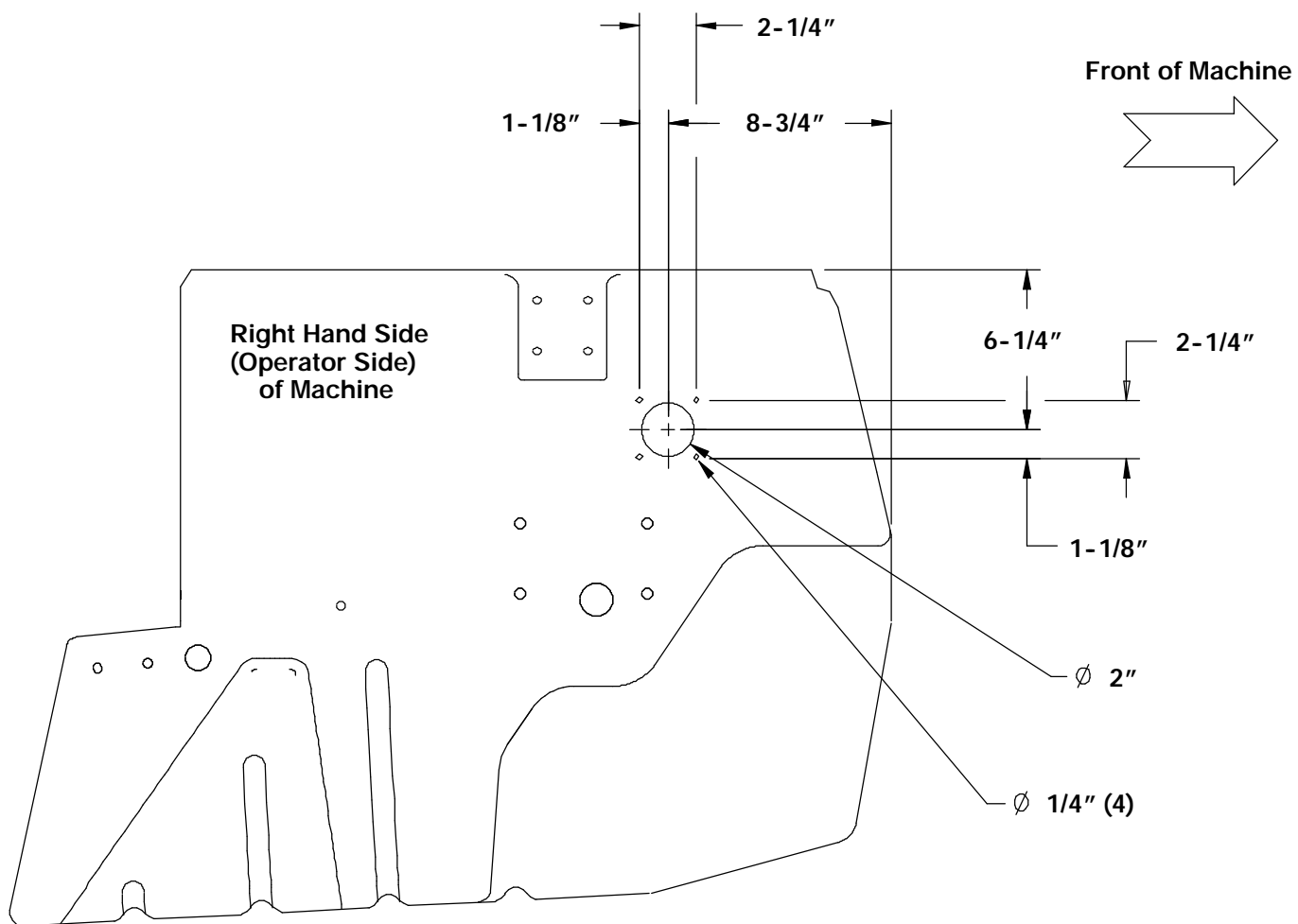


FIG. 3 - Location of Holes to be Drilled for Vac Wand Adaptor

BILL OF MATERIALS FOR VAC WAND KIT NUMBER 360915

Ref.	TENNANT Part No.	Description	Qty.
1	360912	Vacuum Wand Adaptor	1
2	55965	Vacuum Wand Seal	1
3	15678	Hex Screw, 6 X 1.0	4
4	19066	Flat Washer	36
5	08712	Nut, 6 X 1.0	4
6	44166	# 12 Jack Chain	1
7	26395-2	Steel Cable Clamp	1
8	42124	Drain Plug	1
9	06926	Pan Screw, 4 X 0.7	1
10	02850	Nut, 4 X 0.7	1
11	54012	Wand Weldment	1
12	54009	Vinyl Hose & Cuff Assembly	1
13	67004	Finger Clip	8
14	06930	Pan Screw, 3 X 0.5	8
15	02850	Nut, 4 X 0.7	8
16	360938	Vacuum Wand Bracket	2
17	360943	Pan Screw, 14 X 0.75	8

TENNANT COMPANY
P. O. Box 1452
Minneapolis, MN 55440-1452