



INSTRUCTION BULLETIN

No. 3736
Machine: 5700
Published: 8-95/00
System: SCRUBBING

NOTE: DO NOT DISCARD the Parts List from the Instruction Bulletin. Place the Parts List in the appropriate place in your machine manual for future reference. Retaining the Parts List will make it easier to reorder individual parts and will save you the cost of ordering an entire kit.

NOTE: Numbers in parenthesis () are reference numbers for parts listed in Bill of Materials.

Installation Instructions for Kit number 222830

SYNOPSIS / PROBLEM:

This kit contains the parts needed to install motor springs under the cylindrical brush motors on the 5700 walk behind scrubber. This motor spring is a direct replacement for the tension hex bolt that was installed at the factory. The new spring will make the belt adjustment procedure much easier and eliminate any over or under tightening of the brush drive belt.

Please follow step-by-step instructions.

SPECIAL TOOLS / CONSIDERATIONS: None

(Estimated Time to complete: 1 hour)

PREPARATION:

(Refer to FIG. 1)

1. Lower the scrub head and shut off the machine.

FOR SAFETY: Before leaving or servicing machine, stop on level surface and set parking brake. Then turn off machine and remove key.

2. Remove the front cover from the machine.
3. Remove both the left and right hand scrub brush motor belt guards. Retain the hardware. (Refer to Fig. 1)
4. Loosen and remove both brush motor tension bolts. Discard this hardware. (Refer to Fig. 1)
5. Slip the brush drive belts off the motor drive gear. (Refer to Fig. 1)
6. Remove the hardware holding the brush motors to the mount brackets. Retain this hardware. (Refer to Fig. 1)
7. Remove the hardware holding the motor mount brackets to the scrub head frame. Retain the hardware and the door springs. Discard the old motor mount brackets. (Refer to Fig. 1)

INSTALLATION:

(Refer to FIG. 1 and 2)

1. Install the new motor mount brackets (2) and existing door springs on the scrub head frame. Reinstall the hardware and tighten to 18 - 24 Nm (15 - 20 ft lb). (Refer to Fig. 1)
2. Install the brush motors on the motor mount brackets. Reinstall the hardware and tighten to 18 - 24 Nm (15 - 20 ft lb).

NOTE: Make sure the brush motors are rotated forward to install the new brush springs.

3. Install the two new brush springs (1) on the scrub head using the M8 hex screws (3) from this kit. This hardware goes in the hole left empty when the belt tension bolts were removed earlier.

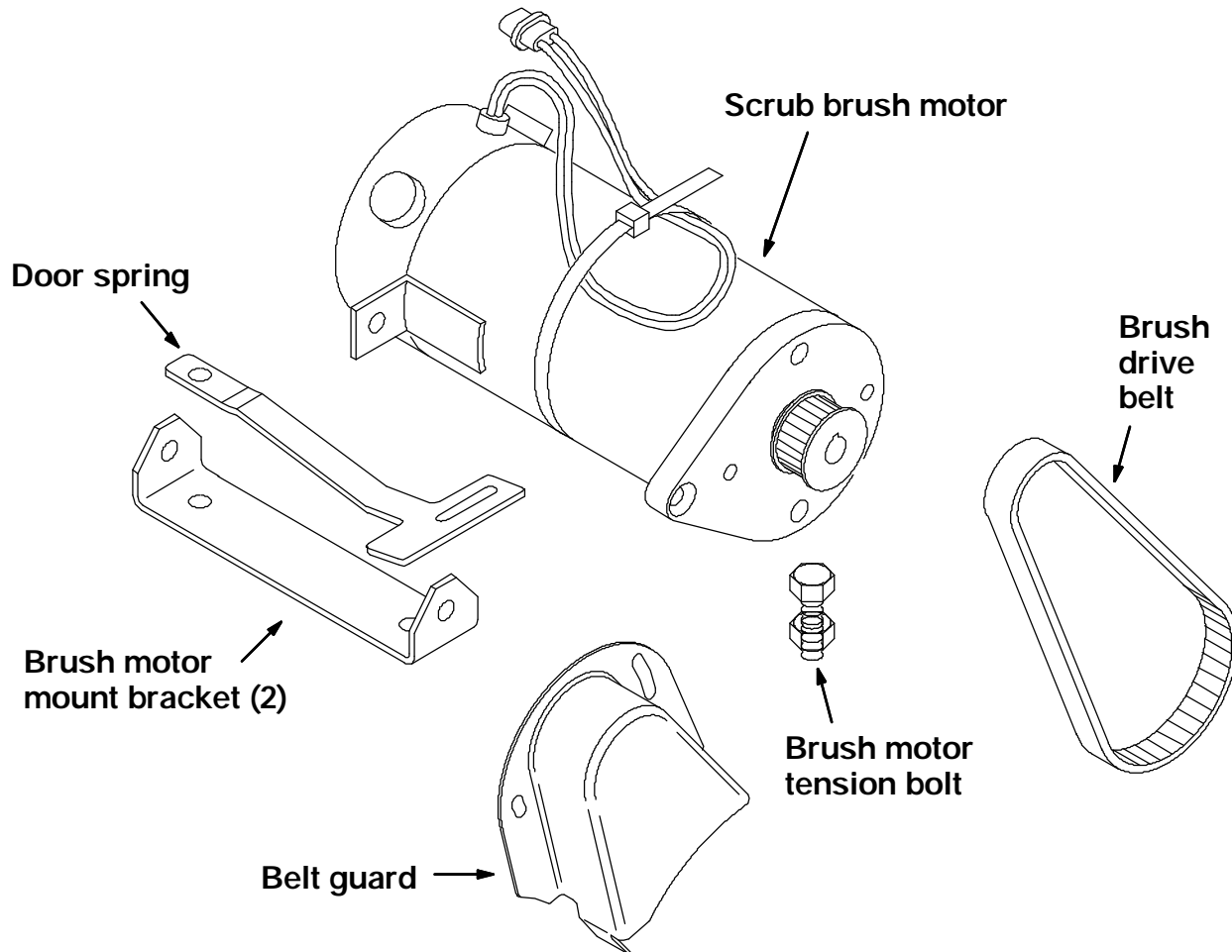


FIG. 1 - Cylindrical Scrub Head

4. Rotate the brush motors back in position while pushing down on the new motor springs. Once the brush motor comes in contact with the new motor spring (1) --push down far enough on the brush motor to slip the drive belt back over the drive gears. Release the tension on the brush motor. Repeat this procedure on both brush motors.

NOTE: Check to ensure that the belt is tracking in the center of the brush drive sheave. The drive sheave position can be changed by loosening the set screws holding it to the motor shaft.

5. Reinstall the right and left hand belt guards.
6. Start the machine and operate the scrub brushes. Check the brushes for proper operation.

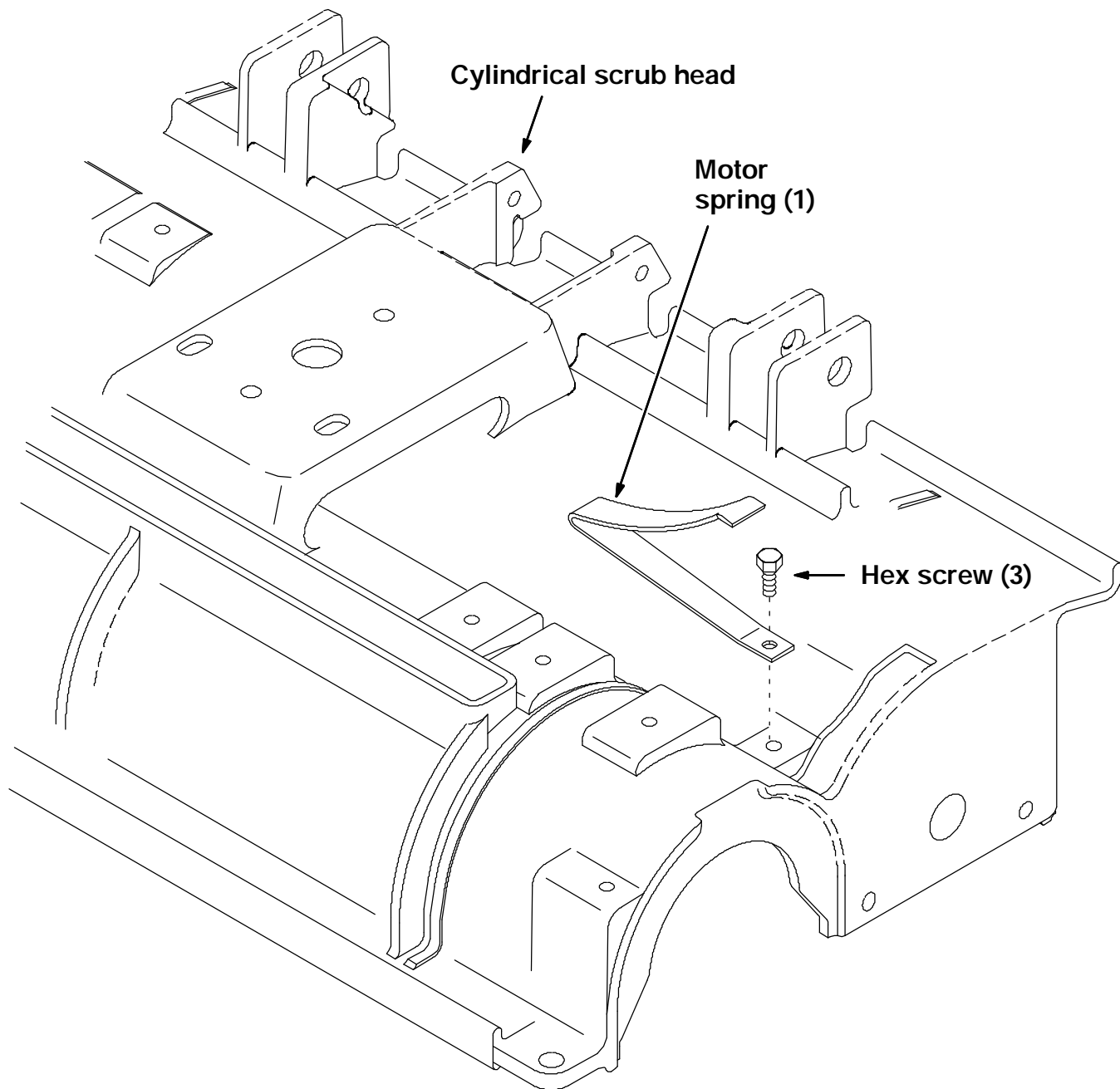


FIG. 2 - Motor Spring Location
BILL OF MATERIALS FOR MOTOR SPRING KIT 222830

Ref.	TENNANT Part No.	Description	Qty.
1	222783	Motor spring	2
2	222173	Motor mount bracket	2
3	76099	M8 hex screw, 20mm	2

TENNANT COMPANY
P. O. Box 1452
Minneapolis, MN 55440-1452