



INSTRUCTION BULLETIN

No. 761403-3691
Machine: 830
Published: 02-95/00
System: SWEEPING

NOTE: DO NOT DISCARD the Parts List from the Instruction Bulletin. Place the Parts List in the appropriate place in your machine manual for future reference. Retaining the Parts List will make it easier to reorder individual parts and will save you the cost of ordering an entire kit.

NOTE: Numbers in parenthesis () are reference numbers for parts listed in Bill of Materials.

Installation Instructions for Kit number 760107

SYNOPSIS / PROBLEM:

This kit contains the parts needed to install a tension spring on the side brush of the machine listed above. This will give a longer side brush life. Please follow step-by-step instructions.

SPECIAL TOOLS / CONSIDERATIONS: None

(Estimated Time to complete: 1 hour)

FOR SAFETY: Before leaving or servicing machine, stop on level surface and set parking brake. Then turn off machine and remove key.

INSTALLATION:

(Refer to FIG. 1)

*NOTE: This installation kit has a M12 nut (2) and a 1/2 in. nut (6) which are very similar in appearance, **DO NOT** mix these two up.*

1. Install the eyebolt (4) and **1/2 in.** nyloc nut (6) in the hole in the upper side brush bracket. Leave the nut loose for now. (Refer to Fig. 1)
2. Hook the tension spring (5) on the eye bolt. The end of the spring with the eye on the center line of the spring attaches to the eyebolt. (Refer to Fig. 1)
3. Attach the other end of the spring to the lower side brush bar using the M12 hex screw (1), 1/2 in. washer (3), and **M12** nyloc nut (2). Make sure the hex screw is installed with the nut on the inside of the arm. Snug the M12 hex screw and nut to a point that the spring is still free to pivot. (Refer to Fig. 1)

ADJUSTMENT:

(Refer to FIG. 1)

1. Tighten the 1/2 in. nyloc on the eye bolt so that 2-1/4 in of thread extend through the nut. (Refer to Fig. 1)
2. The machine must now be operated in the sweeping environment it will see most often.
3. The spring tension should be steadily increased until sweeping performance starts to diminish. Back the tension down to the last acceptable setting. This adjustment will give the best combination of sweeping performance and brush life.

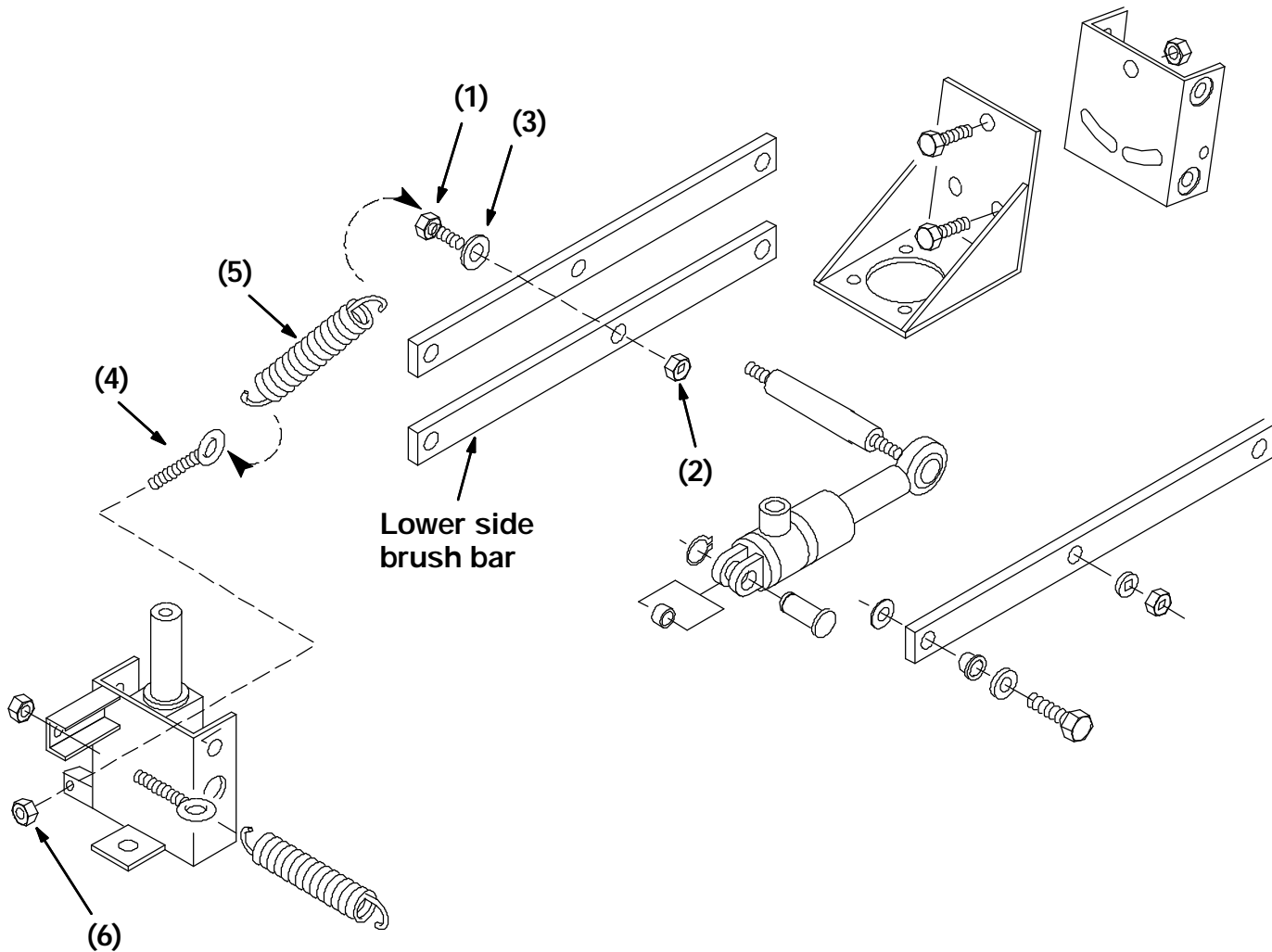


FIG. 1 - Side Brush Assembly
BILL OF MATERIALS FOR SIDE BRUSH SPRING KIT 760107

Ref.	TENNANT Part No.	Description	Qty.
1	06969	M12 hex screw.	1
2	08711	M12 nyloc nut	1
3	32486	1/2 in. flat washer	2
4	761225	Eyebolt	1
5	761235	Tension spring	1
6	32985	1/2 in. nyloc nut	1

TENNANT COMPANY
P. O. Box 1452
Minneapolis, MN 55440-1452