



No: 2366

Machine: 140, 140E  
210, 210E

Published: 6-79

# INSTRUCTION BULLETIN

## BEARING REPLACEMENT KIT SK2366 FOR BEARING #41432 and FLANGE #41433

Bearing #41432 used on Model 140 (gas & electric) and Model 210 (gas & electric) is no longer available. The new Bearing #48635 requires a new Flange #48636 and spacing washers which are provided in this kit.

### TO INSTALL BEARINGS ON MODEL 210's & MODEL 140 DRIVE SHAFT:

It will be necessary to space out the bearing using the 1/4" flat washers provided. Insert three washers on bolts on each side of flange between the flange and the mounting surface. Space out approximately 7/32".

### TO INSTALL BEARING ON MODEL 140 BRUSH DRIVE SHAFT:

Bearing on left hand side of machine must be installed on outside of left hand frame member to prevent interference with the lowering of brush arm. See Fig. 1. Use three 1/4" flat washers as shown to space out the bearing.

**NOTE:** In the future, replacement parts may be ordered separately by the following numbers: Bearing #48635 and Flange (Retainer) #48636. Please keep this bulletin on file and/or make part number corrections in your manuals for future reference.

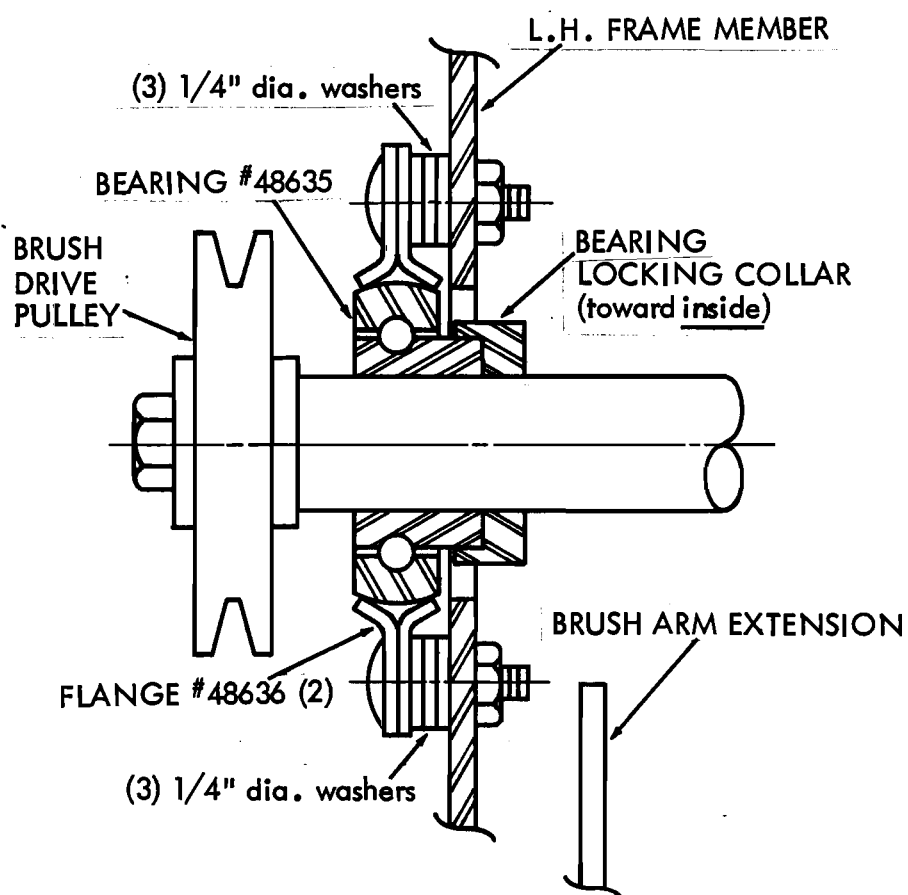


Fig. 1 - REAR VIEW  
DRIVE SHAFT - LEFT HAND SIDE

Bearing for drive shaft assembly located on left side of Model 140 frame, should be mounted as shown.

TENNANT COMPANY  
P.O. Box 4052  
Minneapolis, Minnesota 55440