



INSTRUCTION BULLETIN

No. 9014678
Machine: 550 / 1550
Published: 11-2015
Rev. 00

NOTE: DO NOT DISCARD the Parts List from the Instruction Bulletin. Place the Parts List in the appropriate place in the machine manual for future reference. Retaining the Parts List will make it easier to reorder individual parts and will save the cost of ordering an entire kit.

NOTE: Numbers in parenthesis () are reference numbers for parts listed in Bill of Materials.

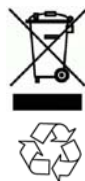
Installation instructions for **kit number 9014677**

SYNOPSIS:

This kit contains the parts needed to replace the temperature gauge / water temperature send unit on 550 / 1550 scrubbers equipped with internal combustion engines.
Please follow step-by-step instructions.

SPECIAL TOOLS / CONSIDERATIONS: NONE

(Estimated time to complete: 1.25 hours)



PROTECT THE ENVIRONMENT

Please dispose of packaging materials, used machine components such as batteries and fluids in an environmentally safe way according to local waste disposal regulations.

Always remember to recycle.

PREPARATION:

1. Park the machine on a clean level surface, turn off the machine, set the parking brake, and remove the key.

FOR SAFETY: Before leaving or servicing machine, stop on level surface, turn off machine, set parking brake, and remove key.

2. Disconnect the machine battery cables from the battery.



WARNING: Always disconnect battery cables from machine before working on electrical components.

INSTALLATION:

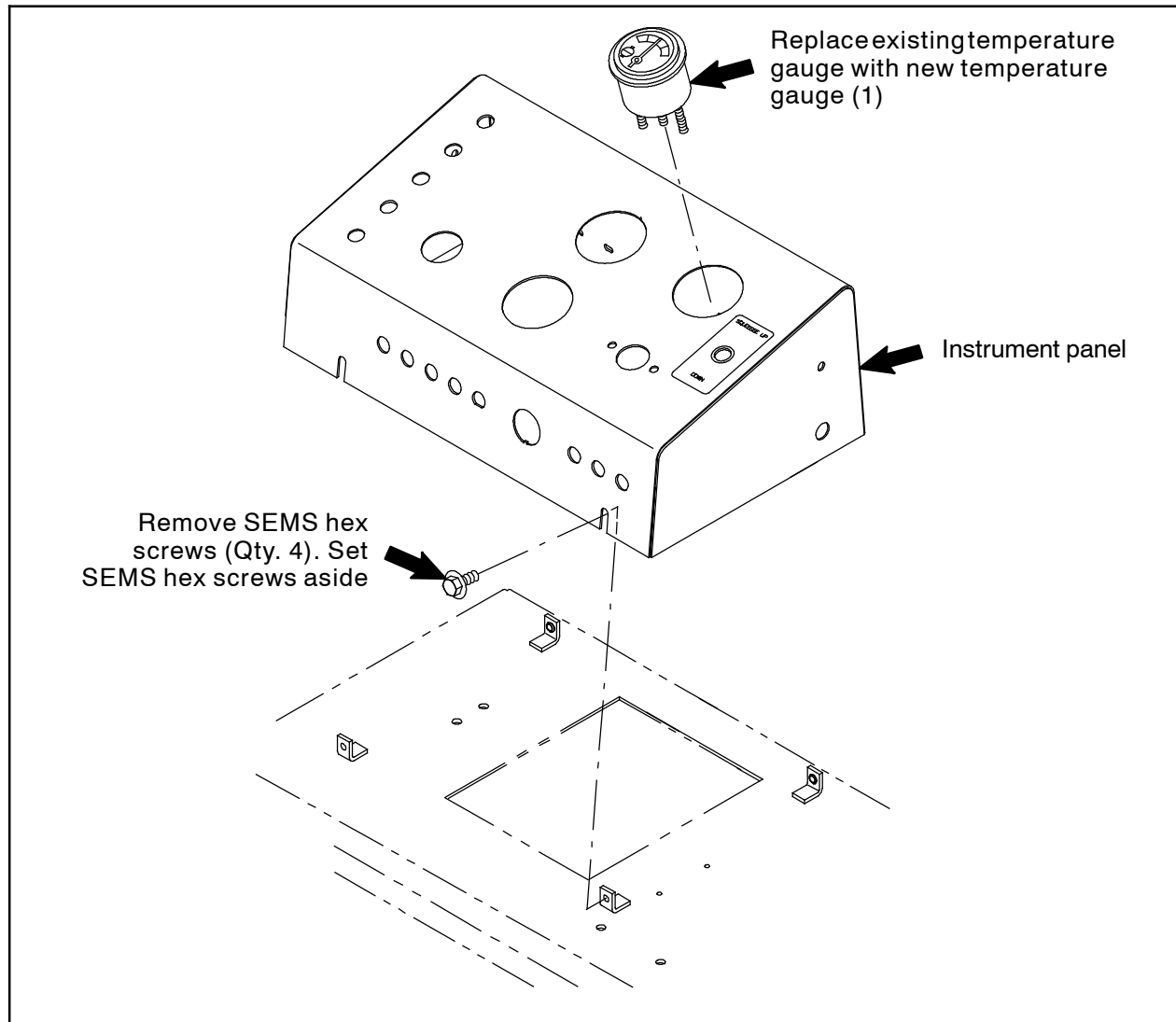


FIG. 1

1. Remove the hardware securing the instrument panel to the machine. Set the hardware aside. (Fig. 1)
2. Carefully lift the instrument panel from the machine and position the panel so the interior can be easily accessed. **Do Not** break any wire / cable connections when removing the instrument panel from the machine. (Fig. 1)
3. Disconnect the main wire harness from the temperature gauge and remove the temperature gauge from the instrument panel. Discard the removed temperature gauge. (Fig. 1)
4. Insert the new temperature gauge (1) into the instrument panel. (Fig. 1)
5. Connect the main wire harness to the temperature gauge (1). (Fig. 1)
6. Reinstall the instrument panel onto the machine. (Fig. 1)

7. Open panels / covers necessary to access the engine.
8. Disconnect the main wire harness from the water temperature send unit. (Fig. 2 / Fig. 3 / Fig. 4)

NOTE: The water temperature send unit is usually located near the thermostat on most machines.

9. Remove the temperature sender from the engine. Discard the water temperature send unit. (Fig. 2 / Fig. 3 / Fig. 4)
10. Install the new water temperature send unit (2) into the engine. (Fig. 2 / Fig. 3 / Fig. 4)
11. Connect the main wire harness to the water temperature send unit (2). (Fig. 2 / Fig. 3 / Fig. 4)
12. Reconnect the battery cables to the battery.
13. Start and test the machine. Allow the engine to run for several minutes and observe the temperature gauge. The temperature displayed on the temperature gauge should rise as the engine warms up.

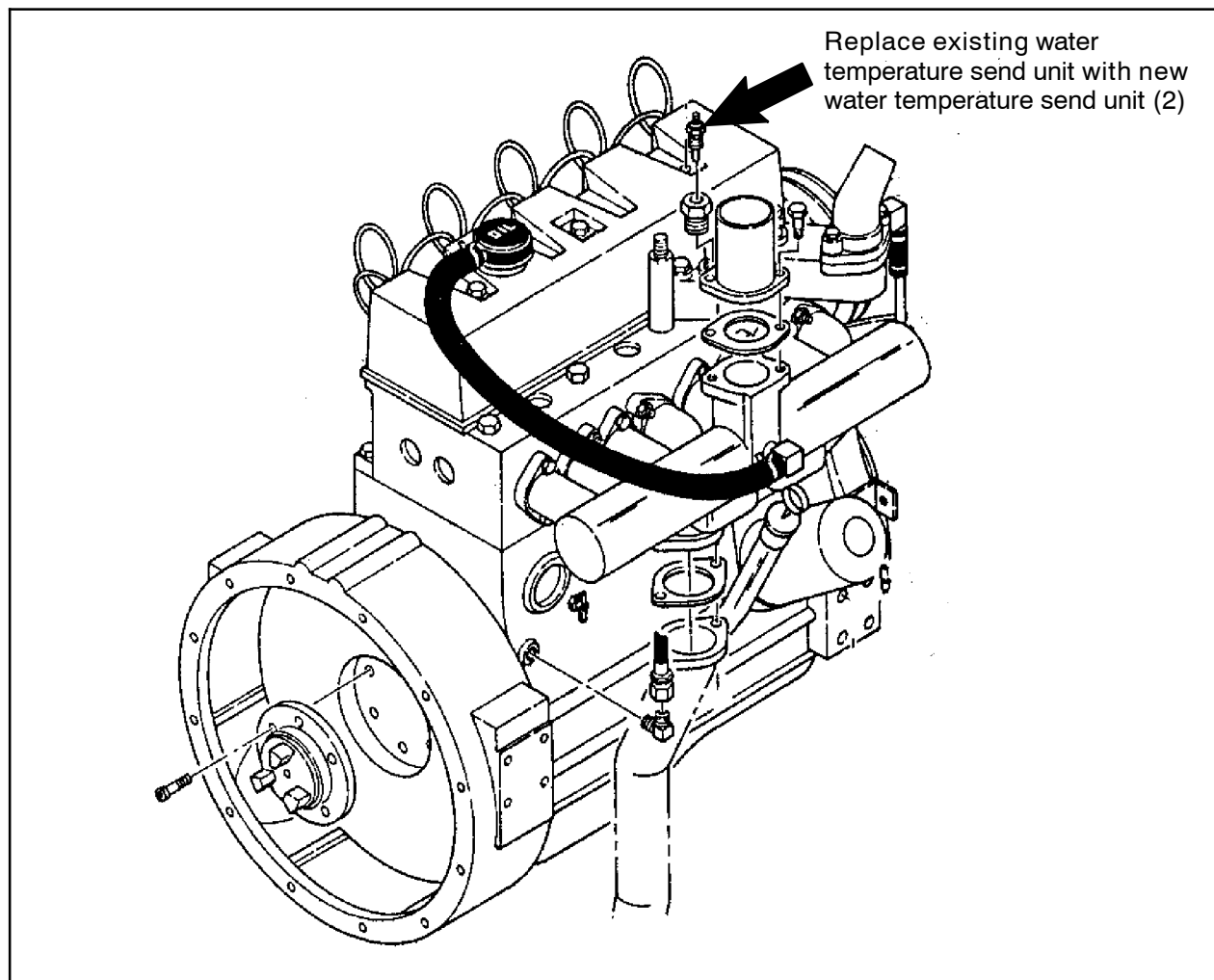


FIG. 2

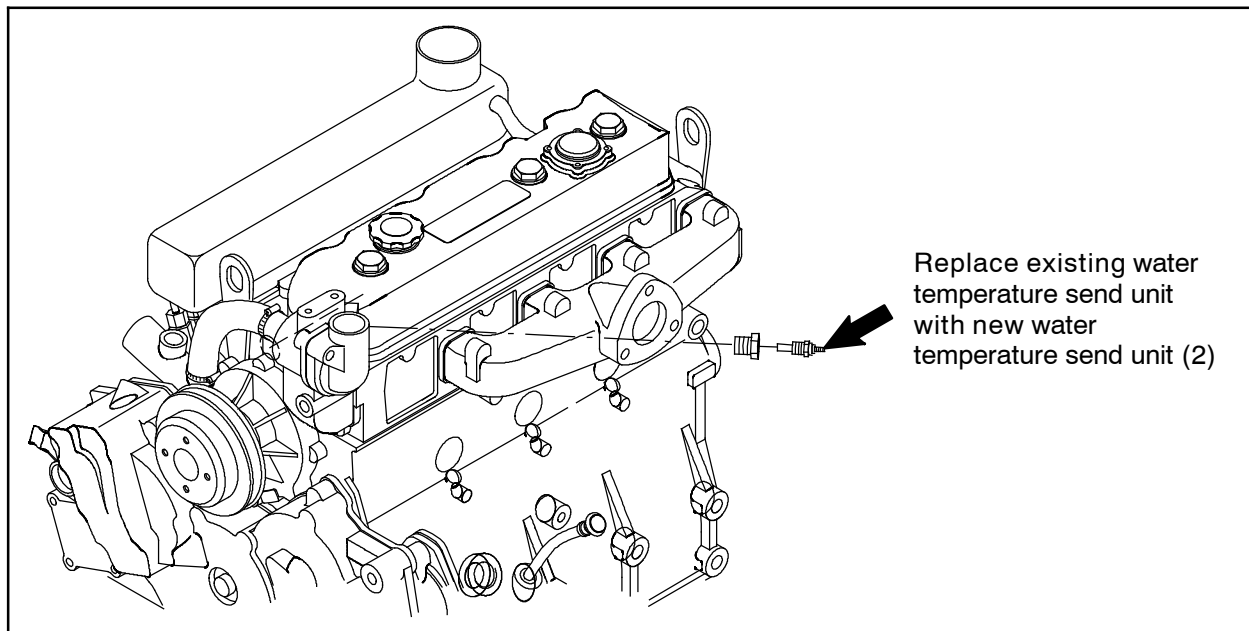


FIG. 3

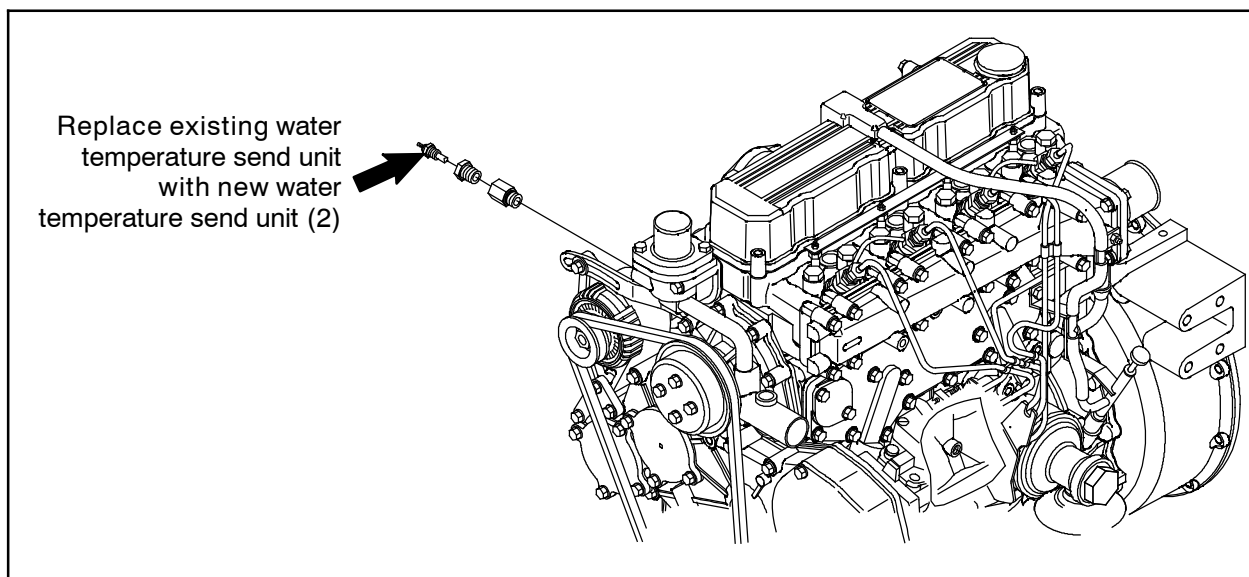


FIG. 4

Bill Of Materials For Gauge Kit, Temperature [550/1550] - 9014677

Ref.	Tennant Part No.	Description	Qty.
1	58591	Gauge, Temp, 100- 280 2.3D 8- 18VDC	1
2	58592	Send- Unit, Water, Temp, 04NPT [113OH/195D]	1

TENNANT COMPANY
P. O. Box 1452
Minneapolis, MN 55440-1452