



INSTRUCTION BULLETIN

No. 9012971
Machine: T17 / M17
Published: 05-2016
Rev. 01

NOTE: DO NOT DISCARD the Parts List from the Instruction Bulletin. Place the Parts List in the appropriate place in the machine manual for future reference. Retaining the Parts List will make it easier to reorder individual parts and will save the cost of ordering an entire kit.

NOTE: Numbers in parenthesis () are reference numbers for parts listed in Bill of Materials.

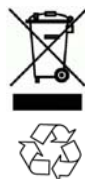
Installation instructions for **kit number 9020080**

SYNOPSIS:

This kit contains the parts needed to install a vacuum wand kit on T17 scrubbers / M17 sweeper- scrubbers.
Please follow step-by-step instructions.

SPECIAL TOOLS / CONSIDERATIONS: NONE

(Estimated time to complete: 45 minutes)



PROTECT THE ENVIRONMENT

Please dispose of packaging materials, used machine components such as batteries and fluids in an environmentally safe way according to local waste disposal regulations.

Always remember to recycle.

PREPARATION:

1. Park the machine on a clean level surface, turn off the machine, set the parking brake, and remove the key.

FOR SAFETY: Before leaving or servicing machine, stop on level surface, turn off machine, and remove key.

INSTALLATION:

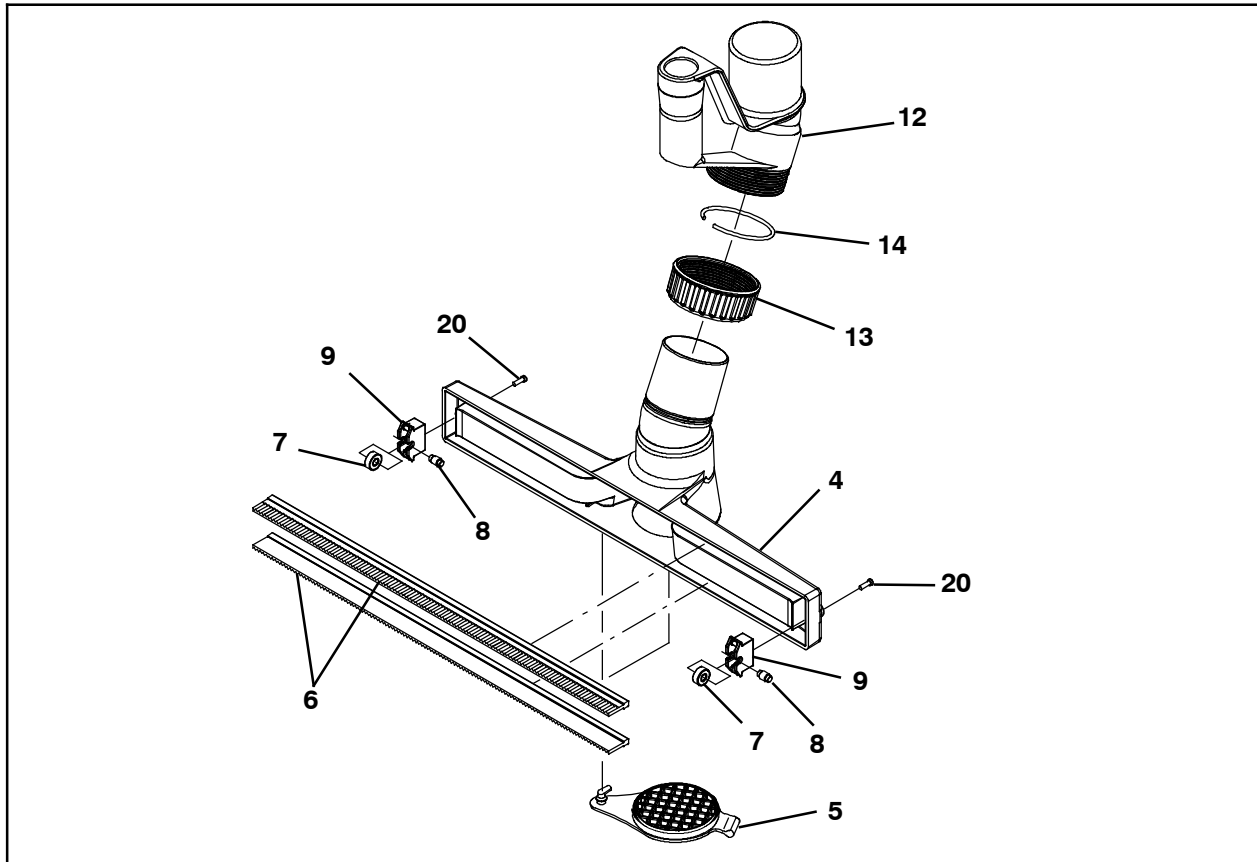


FIG. 1

1. Install the port adapter plug (5) onto the hand squeegee (4). (Fig. 1)
2. Use an axle pin (8) to install a bearing (7) into each squeegee wheel housing (9). (Fig. 1 / Fig. 2)
4. Insert each squeegee wheel housing (9) into the squeegee and use a pan screw (20) to secure each squeegee wheel housing into the hand squeegee. (Fig. 1 / Fig. 3)



FIG. 2

3. Install both squeegee blades (6) into the hand squeegee (4). Be sure the smooth edge of each blade is oriented to the inside of the squeegee and the fluted edge to the outside of the squeegee. (Fig. 1)



FIG. 3

5. Insert the compression ring (14) into the compression nut (13) and slide the compression nut onto the hand squeegee (4). (Fig. 1)
6. Thread the adapter swivel (12) into the compression nut (13). (Fig. 1)

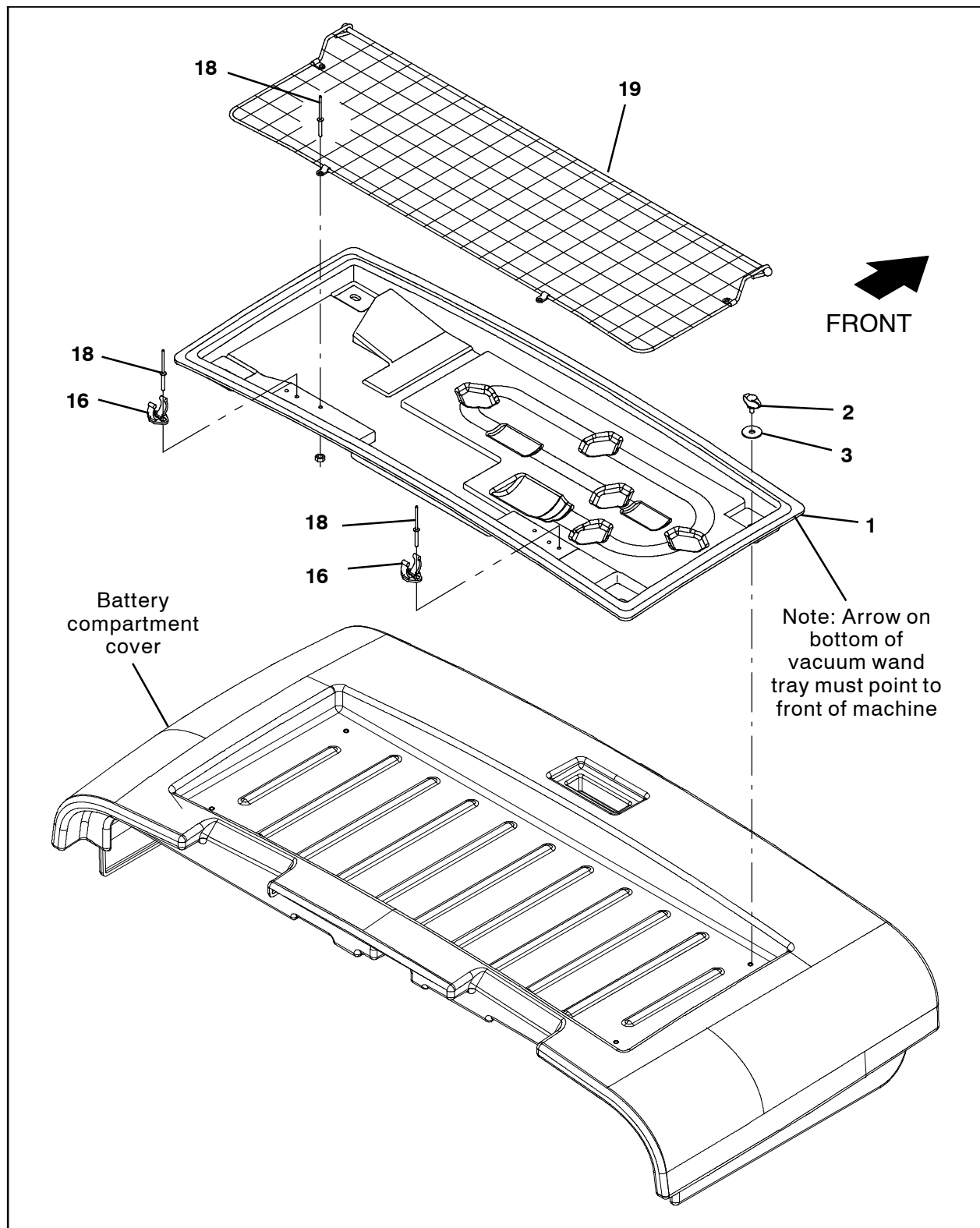


FIG. 4

7. Use two rivets (18) to install both clips (16) onto the vacuum wand tray (1). (Fig. 4)
8. Use four rivets (18) to install the mesh (19) onto the vacuum wand tray (1). (Fig. 4)
9. Use four knobs (2) and four flat washers (3) to install the vacuum wand tray (1) onto the battery compartment cover. (Fig. 4)

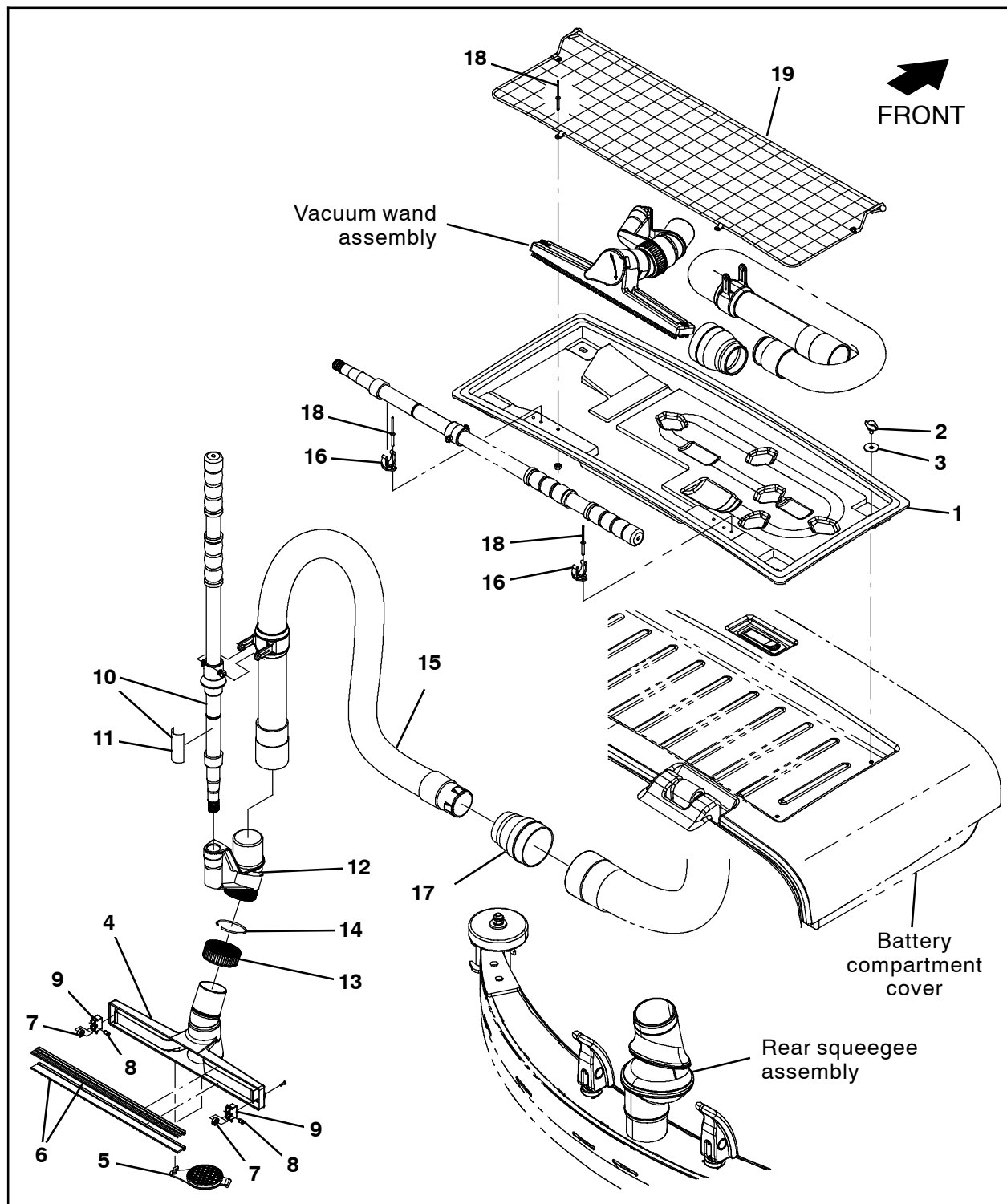


FIG. 5

10. Place the vacuum wand assembly, hose (15), and adapter cuff (17) under the mesh (19) and into the storage locations in the vacuum wand tray (1). (Fig. 5)

12. Use the vacuum wand for cleaning. Refer to the Operator Manual for instructions how to assemble and operate the vacuum wand.

11. Insert the vacuum wand handle (10) into the clips (18) on the vacuum wand tray (1). (Fig. 5)

Bill Of Materials For Vac Wand Kit, CI [T17] - 9020080

	Ref.	Tennant Part No.	Description	Qty.
▽		9020080	Vac Wand Kit, CI [T17]	1
▲	1	1207911	Tray, Vac Wand	1
▲	2	1211150	Knob, Star,	4
▲	3	397779	Washer, Flat, 0.28b 1.00d .06, Stl, Blk	4
▲	4	1060440	Squeegee, Hand	1
▲	5	1060691	Plug, Adapter, Port	1
▲	6	1061356	Retainer, Blade, Sqge, 14.2l	2
▲	7	1061570	Bearing, Ball, 0.24b 0.51d 0.20w [2seal]	2
▲	8	1061571	Pin, Axle, Brg	2
▲	9	1022671	Housing, Sqge, Holder, Wheel, F/609648	2
▲▽	10	1060656	Handle Assy, Extn	1
▲▲	11	1062659	Label, Opertnl, Vacuum Wand Handle	1
▲	12	1060708	Adapter, Swivel, 1.75, Abs	1
▲	13	1060718	Nut, Compression, 2.25- 12, Abs	1
▲	14	1060720	Ring, Compression	1
▲	15	1200642	Hose Assy, Sqge, W/2cuff	1
▲	16	1208102	Clip, Hose, Plstc .88- 1.12	2
▲	17	1207517	Cuff, Adapter, 1.75 X 2.50, PVC	1
▲	18	1213513	Rivet, Blind, .156D X 1.07 X .31D, Alm	8
▲	19	1213799	Mesh Assy, Cloth	1
▲	20	763149	Screw, Pan, 06 x 0.38, F/Plstc	4

TENNANT COMPANY
P. O. Box 1452
Minneapolis, MN 55440-1452