

CONTROLLER KIT

Models: R14 / Strive Rider



The purpose of the this kit is to replace a defective circuit board on R14 / Strive Rider scrubbers.

INSTALLATION INSTRUCTIONS:

Installation Time: 1.5 Hours

TOOLS REQUIRED: Torque Wrench, 8mm, 10mm and 13mm sockets, Wire Cutters, Wire Terminal Crimpers.

PREPARATION

1. Park the machine on a clean level surface.
2. Turn off the machine and remove the key.

FOR SAFETY: Before leaving or servicing machine, stop on level surface, turn off machine, and remove key.

3. Unplug the positive battery cable at the red connector.

⚠ WARNING: Electrical Hazard. Disconnect Battery Cables Before Servicing Machine.

4. Disconnect the operator seat connector from the main wire harness and remove the seat from the machine (Fig. 6).
5. Remove the battery compartment shroud from the machine. Set the shroud and hardware aside (Fig. 6).

INSTALLATION

NOTE: Numbers in parenthesis () are reference numbers for parts listed in Bill of Materials.

(Refer to Fig. 5 for the remainder of this Instruction Bulletin unless otherwise noted)

1. Remove the six bolts (A) and washers (B) from the electrical panel cover (C) and remove the circuit board cover from the control panel weldment (G).
2. Remove connector (H) from the circuit board.

If your machine was built after serial number 10389602, skip to step 5.

3. Remove brown wire #42D from position #35 on connector (H) (Fig 1).
4. Cut off terminal from wire #42D and replace with ring terminal supplied in kit (Fig 1).

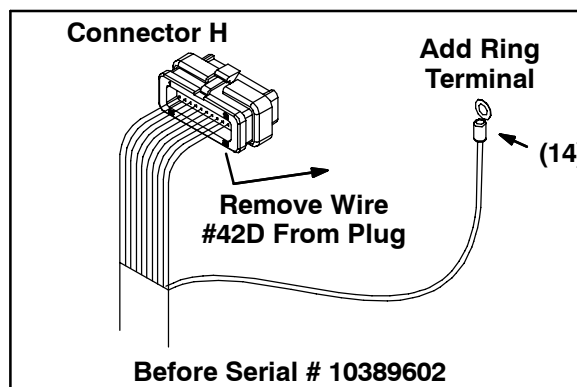


Fig. 1

5. Remove bolt (D), washers (E) and (F) and green wire (Q) from the control panel weldment (G).
6. Remove connectors (J), (K), and (L) from the circuit board.
7. Tilt the circuit board/control panel weldment out as shown (Fig. 2).

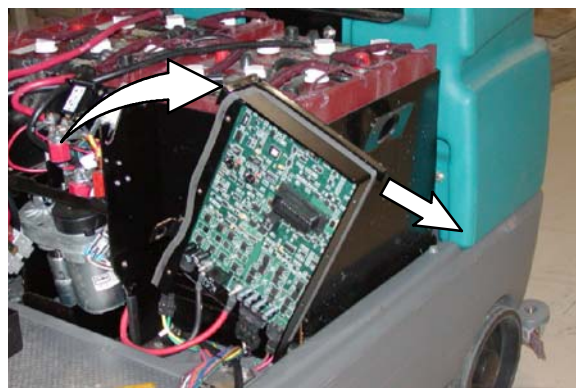


Fig. 2

8. Remove the positive (+) red power cable (M) and the negative (-) black power cable (N) (and brown wire (P) if equipped) from the circuit board and remove the circuit board from the machine.

Controller Kit INSTALLATION INSTRUCTIONS - Continued

9. Put on the kit supplied static ground strap and attach the other end of the ground strap to the frame of the machine. Wear the static ground strap through Step 15.

NOTE: The ground strap prevents static electricity from damaging the circuit board. **Always wear a ground strap whenever handling the circuit board or other electronic components that could possibly be damaged by static electricity.**

10. Install the new circuit board (1)/control panel weldment (10) onto the machine. Position the circuit board/control panel weldment as shown (Fig. 3).
11. Use two hex nuts (4), three flat washers (5), and one lock washer (6) to install the positive (+) red power cable (M) onto the positive terminal on the circuit board (1). Torque both nuts to 33 in/lbs. Be sure parts are installed as shown (Fig. 5).
12. Use two hex nuts (4), three flat washers (5), and one lock washer (6) to install the negative (-) black power cable (N) and brown wire #42D (P) onto the negative terminal on the circuit board (1). Torque both nuts to 33 in/lbs. Be sure parts are installed as shown (Fig. 5).
13. Slide the circuit board (1)/control panel weldment (10) down into position (Fig. 3).

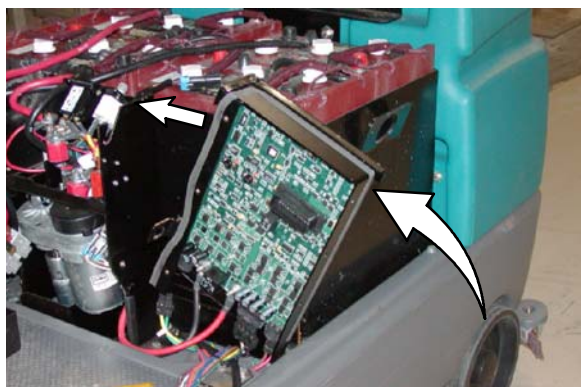


Fig. 3

14. Connect connectors (J), (K), and (L) from the wire harness to the circuit board (1).

15. Connect connector (H) to the circuit board (1).
16. Place the electrical panel cover (C) back onto the control panel weldment (10) and use the set aside bolts (A) and washers (B) to secure the electrical panel cover on the control panel weldment.
17. Check all battery, live contact, and fuse connections. It should not be possible to move these cables by hand. If necessary, replace the existing battery cable nuts with the provided lock nuts (13) (Fig. 4).

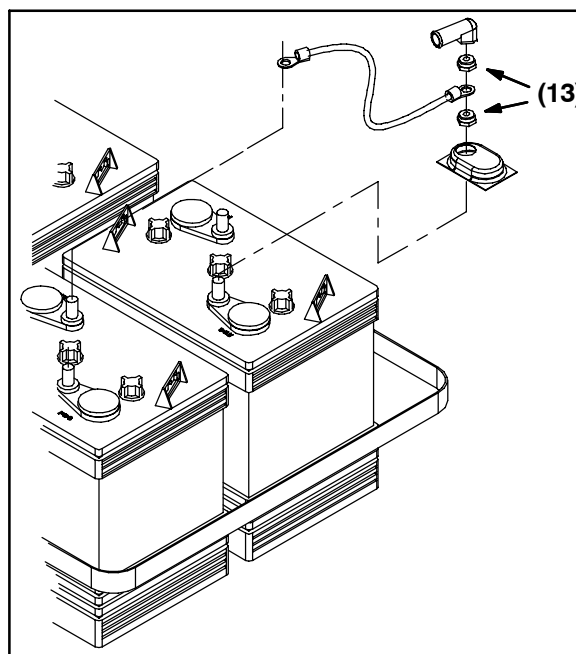
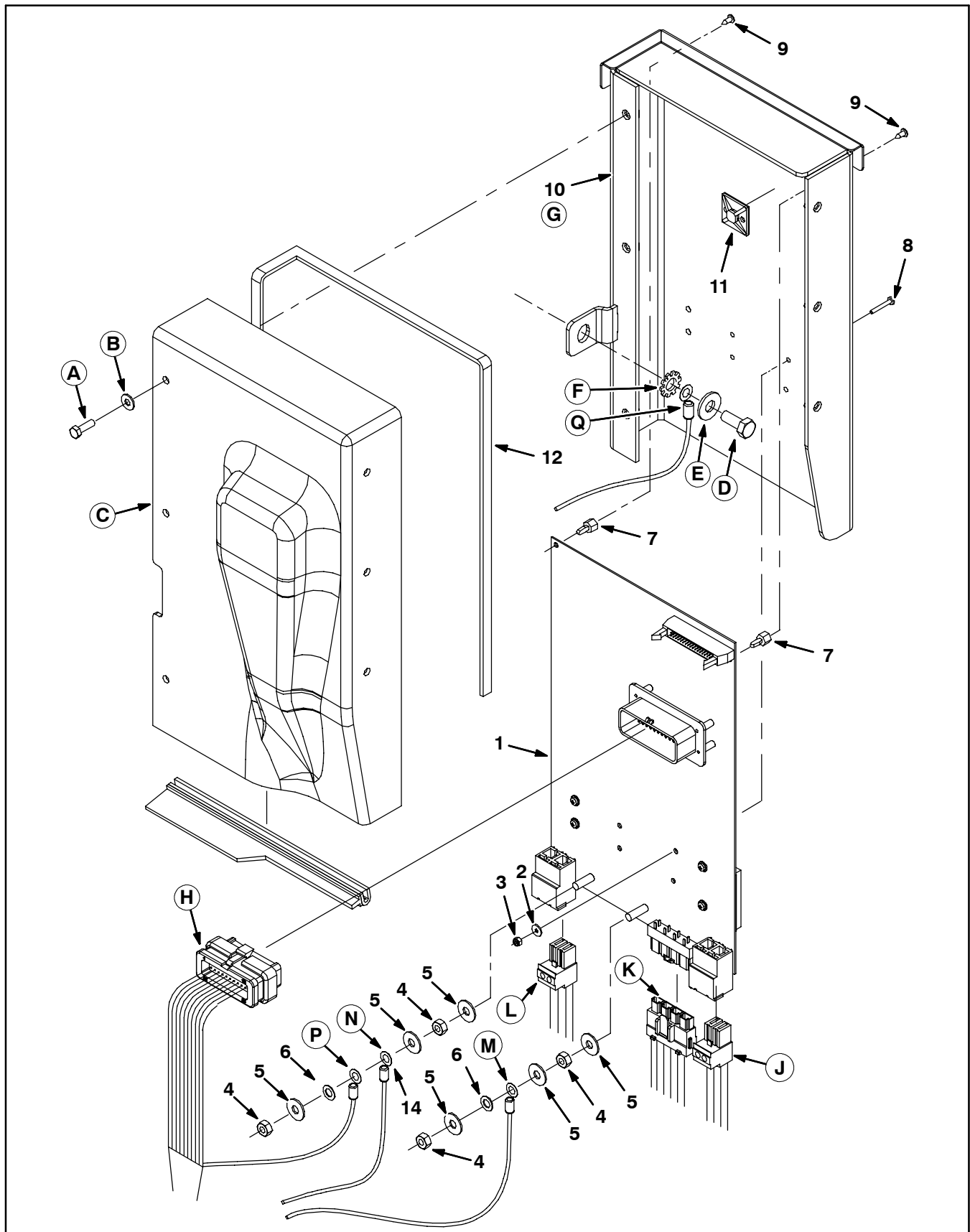


Fig. 4

18. Place the battery compartment shroud onto the machine and reinstall the hardware to secure the shroud onto the machine (Fig. 6).
19. Reinstall the operator seat onto the machine and connect the operator seat cable to the main wire harness (Fig. 6).
20. Reconnect the battery cables.
21. Test machine to ensure it operates properly.

INSTALLATION INSTRUCTIONS - Continued**Fig. 5**

Controller Kit

INSTALLATION INSTRUCTIONS - Continued

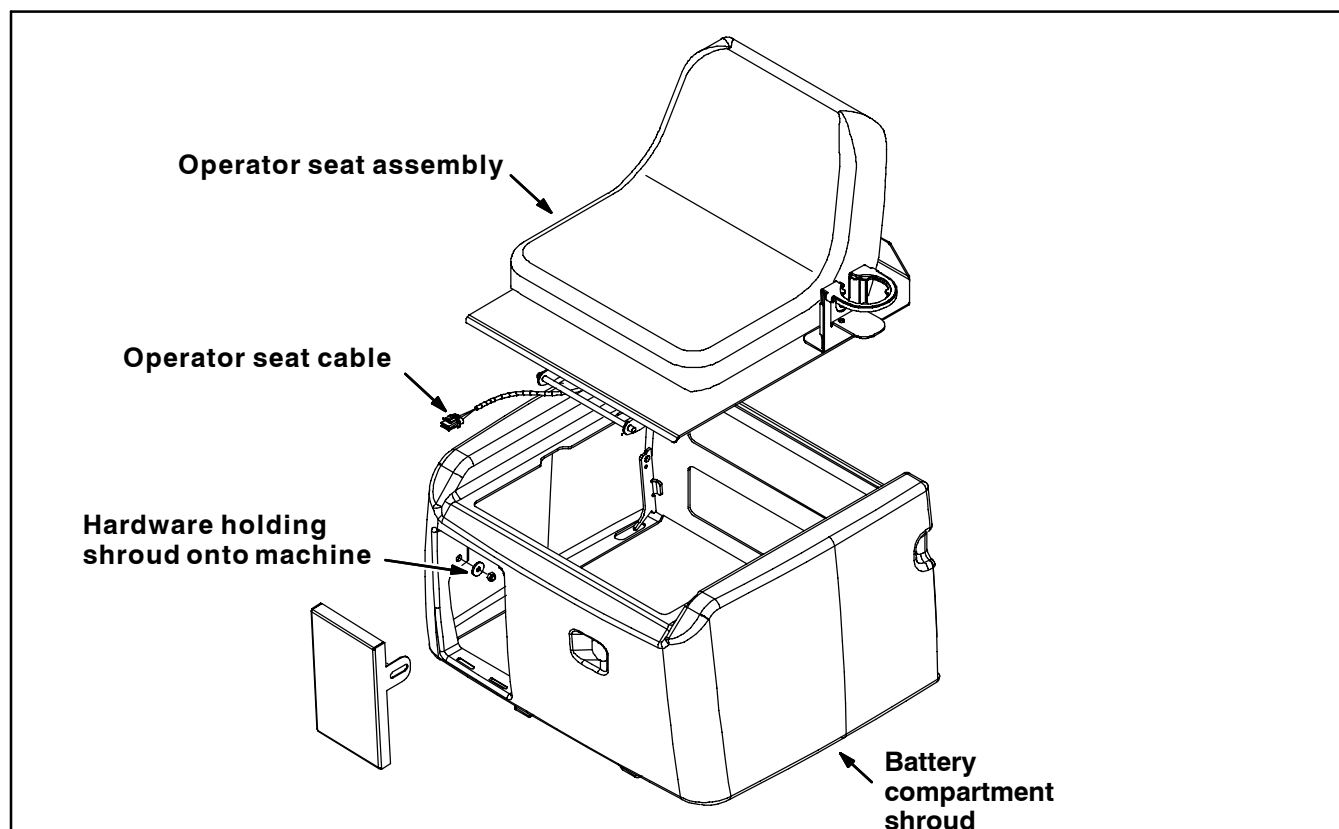


Fig. 6

Bill of Materials for Controller Kit, Replmt, [R14 / Strive Rider]-(9006883)

Ref.	Tennant Part No.	Description	Qty.
▽	9006883	Controller Kit, Replmt	1
▲ 1	-	Circuitboard, Logic * (not offered separately)	1
▲ 2	1019218	Washer, Flat, 0.14B 0.31D, Nyl *	4
▲ 3	579211	Nut, Hex, Lock, M3 X .5, SS *	4
▲ 4	07785	Nut, Hex, Std, M6 X 1.0, A2, SS	4
▲ 5	01684	Washer, Flat, 0.25 SS	6
▲ 6	32982	Washer, Lock, Int, 0.25	2
▲ 7	1016825	Support, Circuitboard *	2
▲ 8	06922	Screw, Pan, M3 X 0.5 X 20, 4.8 *	4
▲ 9	3701.6	Screw, Pan, #06-32 X 0.38, Phl SS Shtmtl *	2
▲ 10	1017754	Panel Wldt, Cntrl *	1
▲ 11	55248	Mount, Cable Tie*	1
▲ 12	1017880	Seal, Strip, Adh *	1
▲ 13	87435	Nut, Hex, Flexlock, .31-18 (see figure 4)	8
▲ 14	130131	Terminal, Ring, 1/4"	8
▲ N/S	27964	Strap, Static, Ground, Disposable	1

▽ ASSEMBLY

▲ INCLUDED IN ASSEMBLY

* Items pre-assembled.