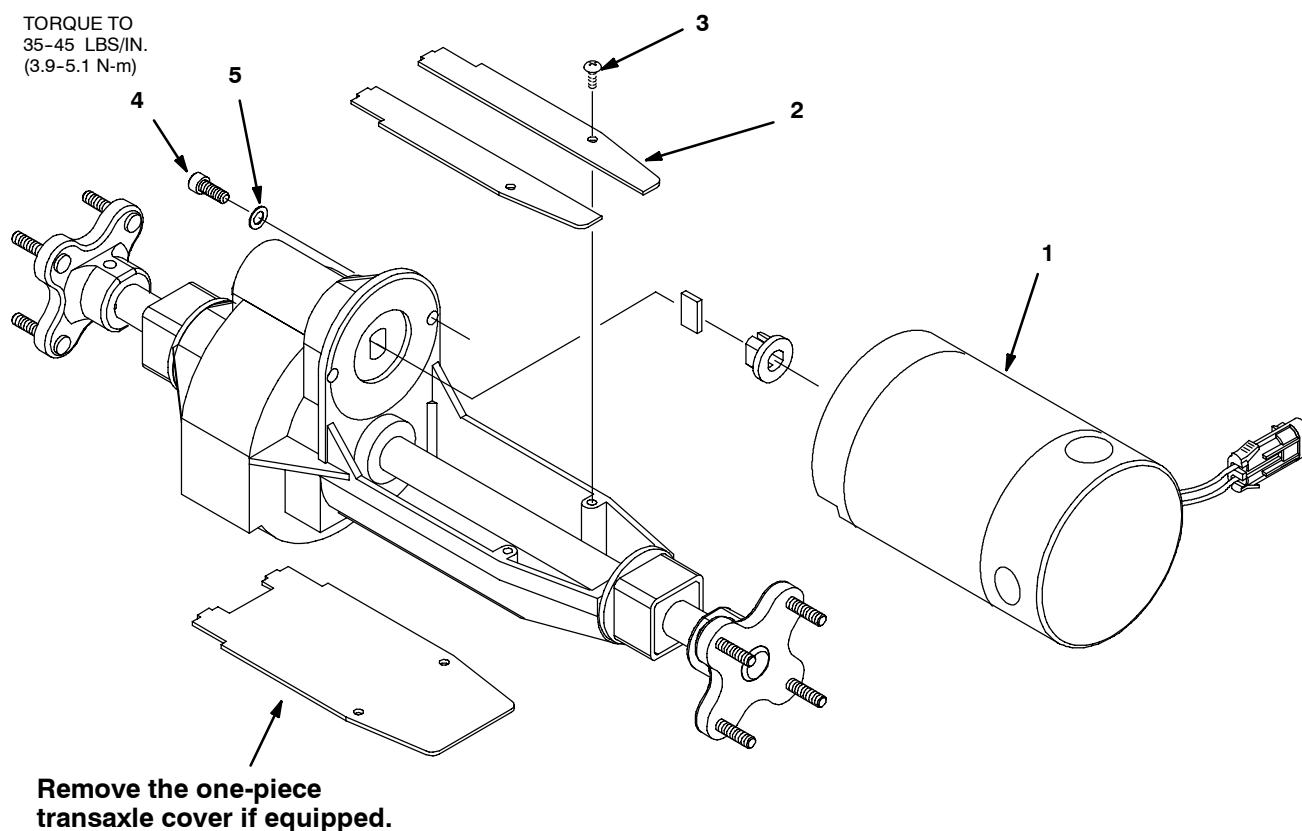


# TRANSAXLE MOTOR REPLACEMENT KIT

**INSTALLATION NOTE:** If your transaxle is equipped with the one-piece transaxle cover, the cover must be removed to allow clearance for the replacement motor. New transaxle covers are supplied with kit.

Please keep this sheet with your owner's manual for future reference.



## KIT CONTENTS:

REF	PART #	DESCRIPTION	QTY.
1	613917	MOTOR, 36V	1
	614165	MOTOR KIT, 24V	1
2	N/A	COVER, TRANSAXLE	2
3	577031000	SCREW, PAN #08-32X0.50	2
4	33951	SCREW, SOC, M6X1.0X20	2
5	32982	WASHER, LOCK, INT, 0.25	2

## REPLACEMENT PART:

PART #	DESCRIPTION
614166	CARBON BRUSH REPLACEMENT KIT (SET OF 4)