

STRAP REPLACEMENT KIT

This Kit was designed to prevent Pad Driver Motor Leveling Strap failure.

KIT CONTENTS

P/N.	Description	Qty.
1001200	STRAP, MOTOR STOP	1
140003	WASHER, 1/4X1 FENDER	2
575600	WASHER, NEOPRENE .25X1.06	2

INSTALLATION INSTRUCTIONS:

(Installation Time: 30 min.)

TOOLS REQUIRED: 3/32" Allen Wrench, 10mm Open End Wrench, 10mm Socket wrench w/ extension, Phillips Screwdriver, Flat Head Screwdriver.

FOR SAFETY: Before servicing machine, unplug power cord from wall outlet.

1. Remove pad pressure knob, 3/32" Allen wrench required (Figure 1).



FIG. 1

2. Remove motor cover, flat head screwdriver and 10mm socket wrench required (Figure 2)

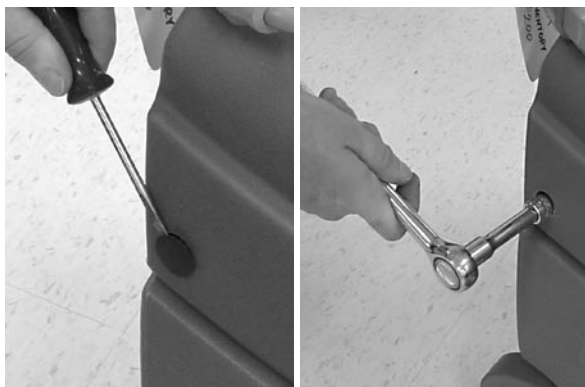


Fig. 2

3. Remove the damaged strap and mounting hardware from machine. Keep screws, they are required with kit.
4. Assemble the new strap, (2) neoprene washers, (1) large flat washer and hex head screw in the order as shown (Figure 3). The rubber side of the strap should face away from the screw head.



Fig. 3

5. Fasten the new strap to the base housing as shown, 10mm wrench required (Figure 4). Rubber side of strap should face upward as shown.

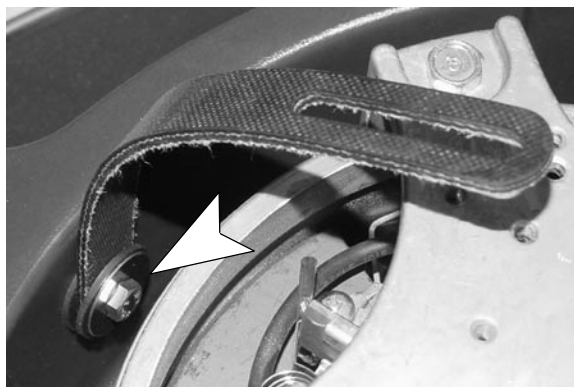


Fig. 4

INSTALLATION INSTRUCTIONS – Continued

6. Using existing screw and supplied large flat washer, fasten strap to the motor cover mounting hole as indicated. Do not tighten screw at this time (Figure 5).

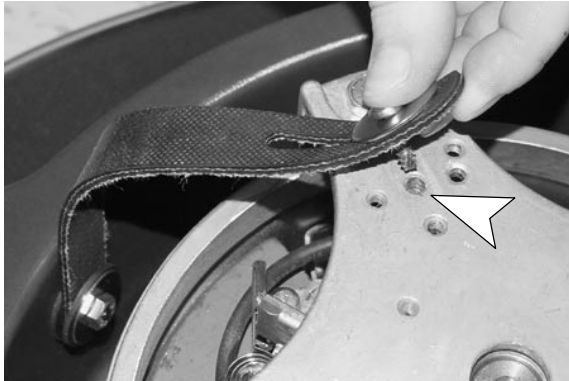


Fig. 5

7. Position machine as shown. Level pad driver and tighten the strap screw. The distance between the pad driver's top surface and base housing should be equal at front and rear of pad driver (Figure 6). The strap should not have any slack.

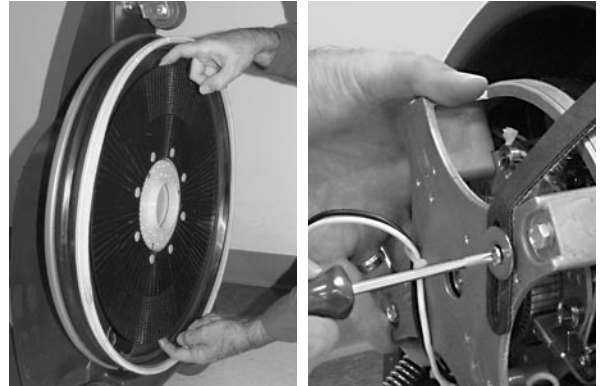


Fig. 6