



WAND PUMP KIT (230V Model)

INSTALLATION INSTRUCTIONS:

(Installation Time: 1 hour)

TOOLS REQUIRED:

3/8", 9/16", 11/16", 7/8", 1", 1 1/16" Wrench & Philips Screwdriver.

5100 WAND PUMP KIT CONTENTS

Ref.	P/N.	Description	Qty.
1	582506	Pump, 230V	1
	601479	Bracket, Pump Mount	1
2	140016	Washer, Lock	2
3	200031433	Screw, M6x1x12	2
4	630251	Fitting, Elbow	1
5	630252	Fitting, Bushing 3/4mx3/8F	1
6	150538	Fitting, Hose Barb, 3/8m	2
7	606325	Hose, 0.38ID 0.60OD	2.000 FT.
8	54333	Clamp, Hose Worm 0.31-0.88D	4
9	607308	Hose, 0.38ID 0.60OD	0.667 FT.
10	150516	Fitting, Hose Barb, 1/4Mx3/8H	1
11	78122	Connector, Anchor	1
12	608292	Coupler, Quick Disconnect	1
13	601416	Panel, Accessory	1
14	578005000	Switch, Wand ON/OFF	1
15	604751	Asm., Wire Black #66	1
16	582150	Plug, Accessory Switch	1
17	069764626	Plug, Hole	1
18	582514	Circuit Breaker	1
19	578734	Boot, Circuit Breaker	1
20	130288	Rectifier, Bridge	1
21	200070266	Screw, M3x.5x16	1
22	579211	Nut, M3	1
23	130133	Terminal, Male Disconnect	2
24	130125	Terminal, Ring	1
25	604748	Asm., Wire Gray w/ Piggy Back Term.	1
26	604749	Asm., Wire Red w/ Female Terminals	1
27	604750	Asm., Wire White #47	1

Prepare Machine for Installation:

- Drain tanks of all water.
- Remove squeegee assembly.
- Remove front cover.
- Carefully lay machine down on RIGHT side.

Begin Installation:

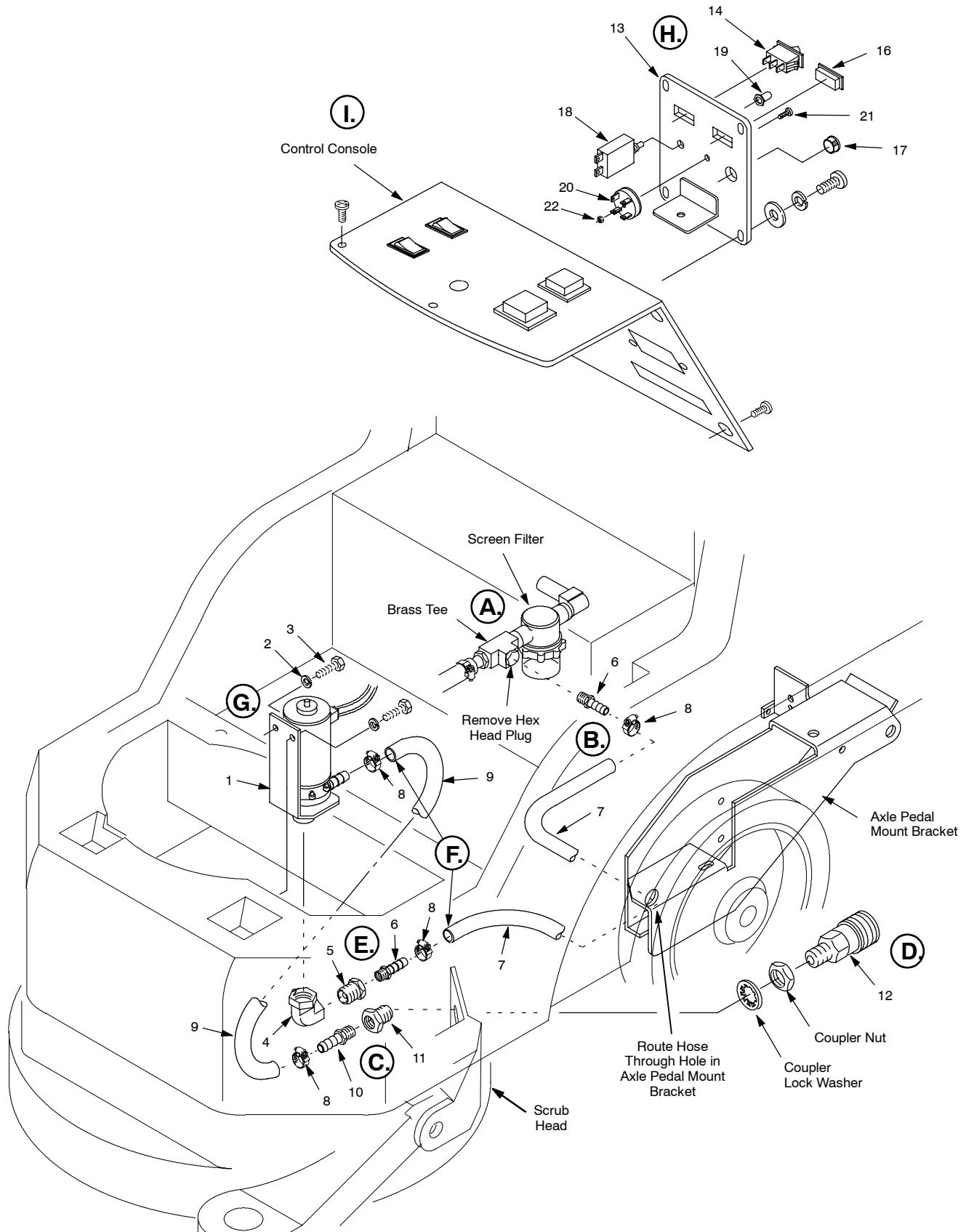
>NOTE: Follow each Step in conjunction with diagram on page 2.

- Locate screen filter (clear bowl) under machine. Remove hex head plug from brass tee, located next to filter, and replace with fitting (ref. 6). Use pipe tape for all threaded fittings.
- Connect hose (ref. 7) to fitting (ref. 6) with screw clamp (ref. 8). Route hose through hole located in axle pedal mount bracket and direct hose towards machine front as shown. Stand machine upright after this step.

- Before mounting quick disconnect coupler (ref. 12), assemble parts (ref. 8, 9, 10 & 11) as shown.
- Position coupler (ref. 12) in mounting hole on scrub head and thread into fitting (ref. 11) as shown. Tighten coupler nut against scrub head.
- Assemble parts (ref. 4, 5 & 6) to bottom of wand pump as shown, use pipe tape.
- Before mounting pump, connect hoses (ref. 7 & 9) to wand pump, use screw clamps (ref. 8).
- With hoses connected to pump, mount pump to machine as shown, use hardware (ref. 2 & 3).
- Mount electrical components to accessory panel as shown (ref. 13, 14, 15, 16, 17, 18, 19, 20, 21 & 22).
- Remove blank panel from console panel and replace with accessory panel (ref. 13). Now remove console panel from machine to access internal wiring. Do not disconnect any wiring.
- Follow Wiring Diagram on page 3 for wire connections.
- Reinstall console panel and front cover.
- To operate Optional Wand Pump Kit:
 - Attach accessory solution hose to quick coupler.
 - Disconnect squeegee hose from inlet tube and replace with accessory vacuum hose.
 - Connect hoses to wand.
 - Turn on wand pump and vacuum switches. Operate wand as normal.

WAND PUMP KIT INSTALLATION INSTRUCTIONS

>NOTE: Follow each Step in conjunction with written instructions on page 1.



WAND PUMP KIT INSTALLATION INSTRUCTIONS**WIRING DIAGRAM**