



Speed Scrub

2701/3301 Speed Scrub ES™ KIT

INSTALLATION INSTRUCTIONS:

(Installation Time: 1 hour)

TOOLS REQUIRED: Standard & Philips Screwdriver,
Electric Drill w/ 1/8", 1/4", 7/16", 1/2", 11/16" & 1-3/8" Drill Bits
& 1/4" NPT Tap.

FOR SAFETY: Before installing kit, disconnect positive (+) battery cable from batteries.

KITS CONTENTS

630136	Pump, 24V	1
630385	Fitting, Nipple 3/4"	1
630145	Timer, 24V	1
210044	Valve, Check	1
630419	Switch, Rocker	1
578720	Splashguard, Switch	1
130738	Light, Indicator	1
578008000	Screw, M5X.8x30	1
601490	Fitting, Bulkhead	1
140283	Nut, 10-24 Nylock	1
150415	Fitting, Elbow 1/4mX3/8H	1
25160	Tubing 5/8ODx3/8ID	.5 ft
25160	Tubing 5/8ODx3/8ID	1.25 ft
140310	Clamp, Hose	4
630138	Filter, Screen	1
603166	Switch, Float	1
605551	Harness, ES Wire	1
604858	Asm., Wire #90 Red	1
604859	Asm., Wire #84, #86 Plnk	1
605552	Asm., Wire #51, #53, #55 Black	1
130041	Wire Tie	4
630440	Decal, Filter Remove	1

STEP 1: Drill holes as indicated.

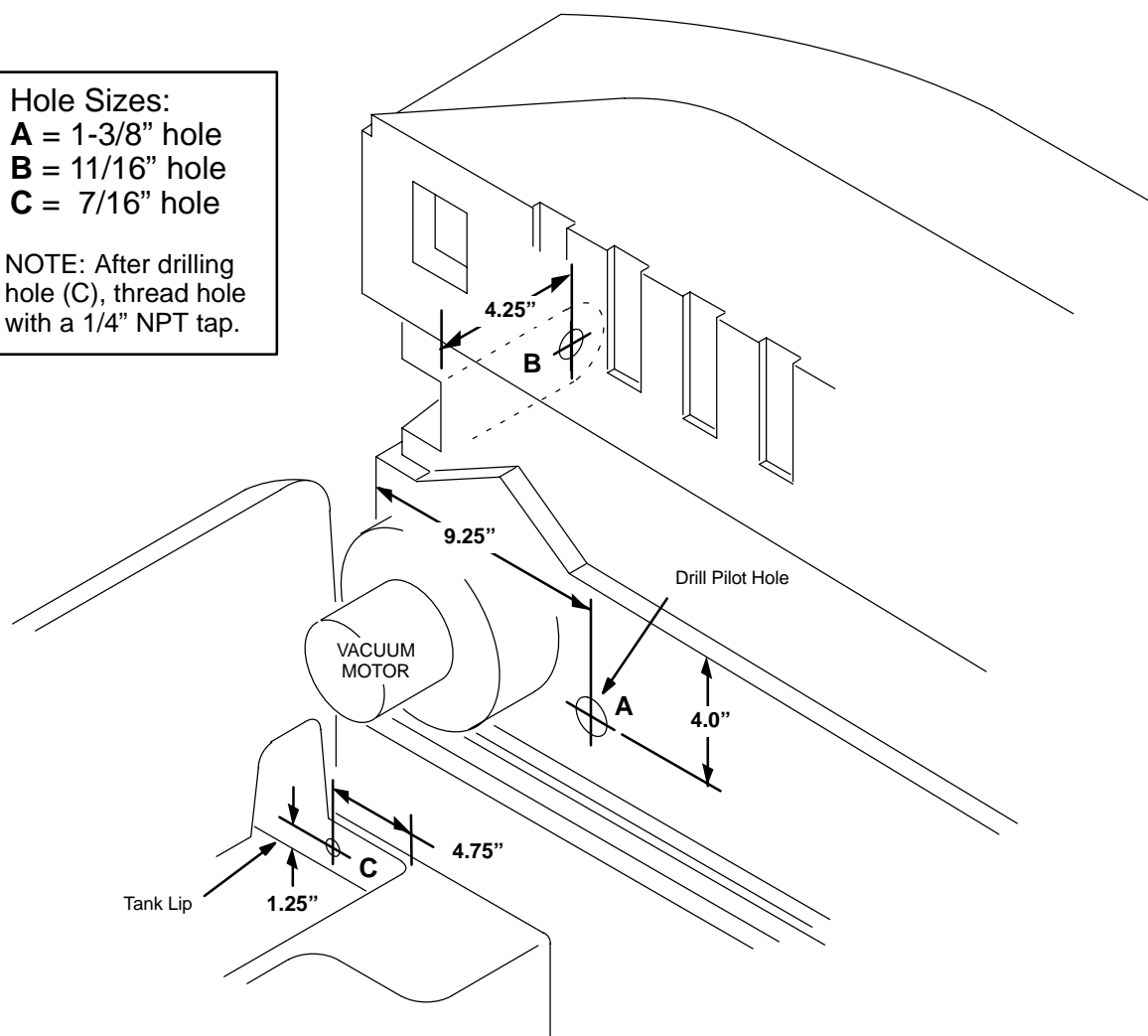
Hole Sizes:

A = 1-3/8" hole

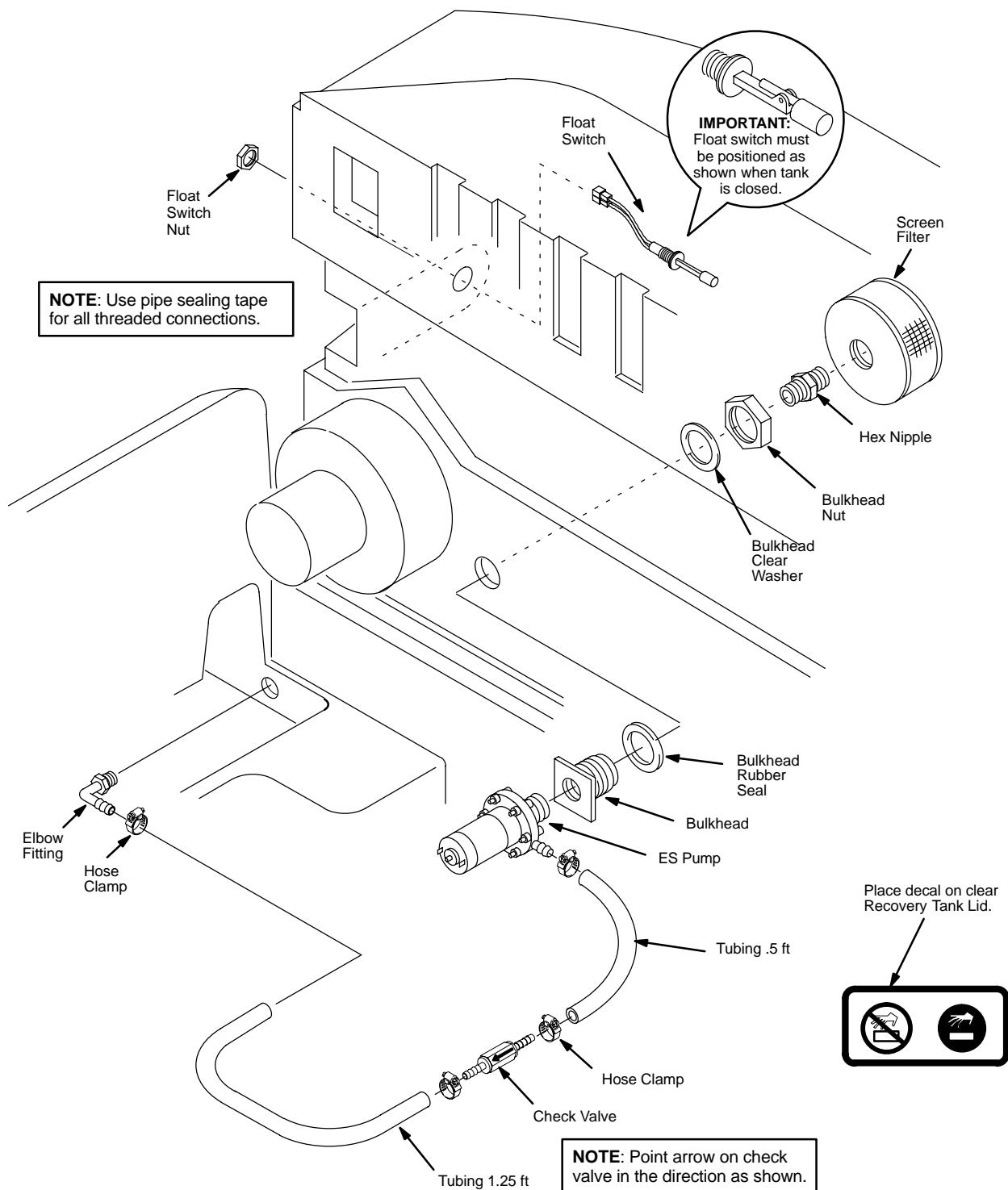
B = 11/16" hole

C = 7/16" hole

NOTE: After drilling hole (C), thread hole with a 1/4" NPT tap.



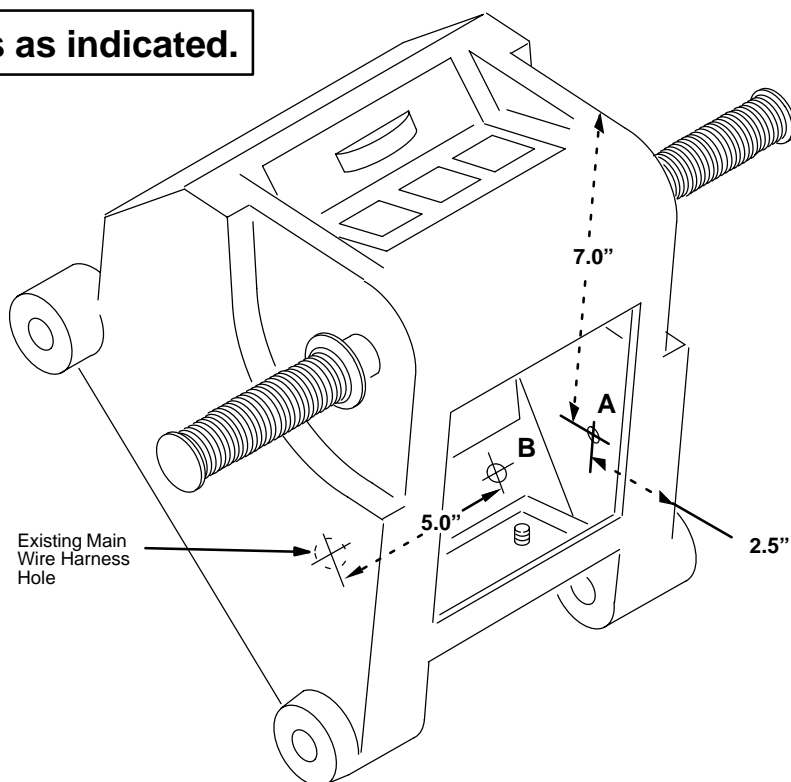
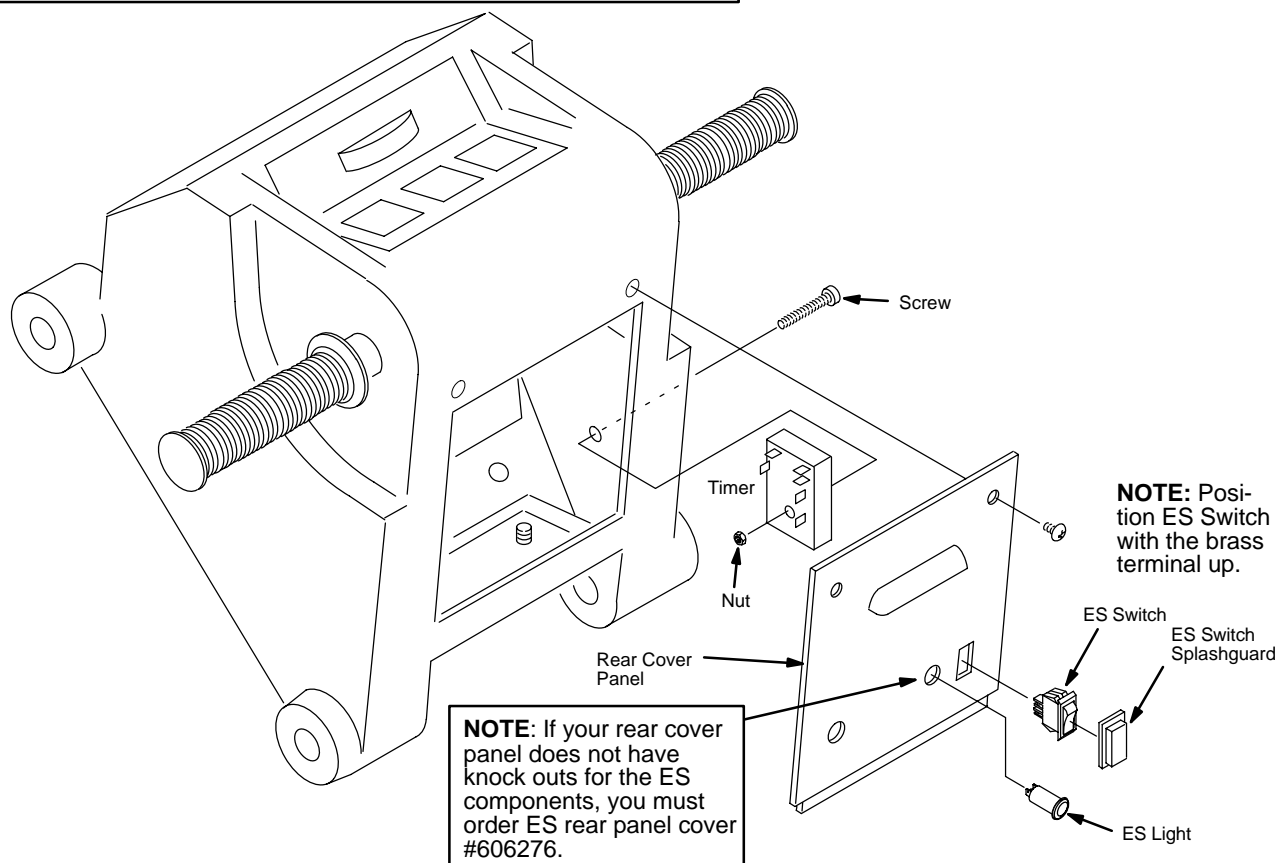
ES KIT

STEP 2: Install ES Components as Shown.

ES KIT

STEP 3: Drill holes as indicated.

A = .125" hole
B = .5" hole

**STEP 4: Install ES components as shown.**

ES KIT

STEP 5: Connect ES Wiring as Shown.