



ES™ KIT

INSTALLATION INSTRUCTIONS:

(Installation Time: 1 hour)

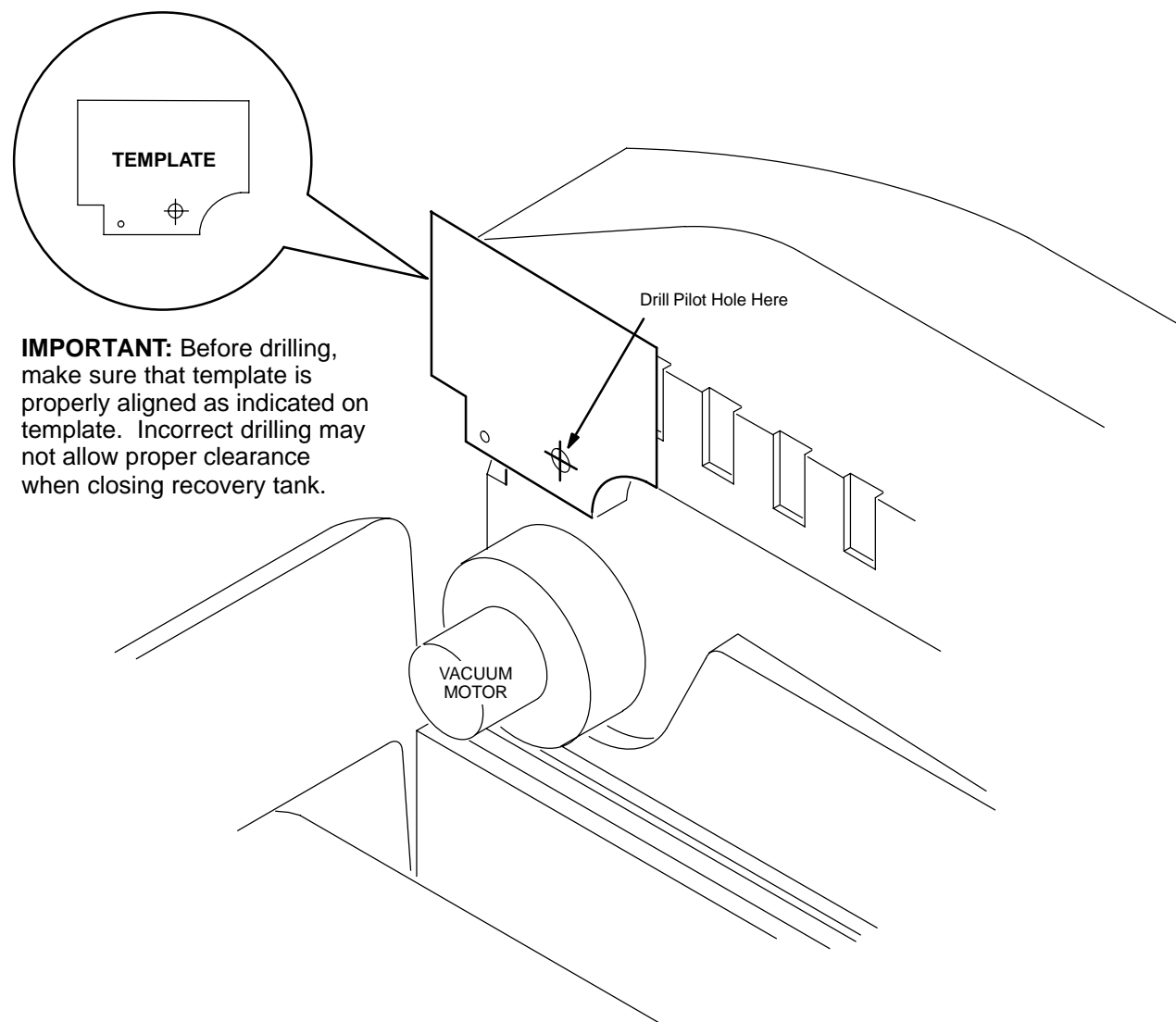
TOOLS REQUIRED: Standard & Philips Screwdriver,
Electric Drill w/ 1/4", 7/16", 11/16" & 1-3/8" Drill Bits & 1/4" NPT Tap

FOR SAFETY: Before installing kit, disconnect positive (+) battery cable from batteries. Be careful not to lay tools on top of batteries, electrical hazard may result.

STEP 1: Use template provided and drill a 1/8" pilot hole as indicated.

KITS CONTENTS

630136	Pump, 24V	1
630385	Fitting, Nipple 3/4"	1
630145	Timer, 24V	1
210044	Valve, Check	1
630419	Switch, Rocker	1
578720	Splashguard, Switch	1
130738	Light, Indicator	1
578008000	Screw, M05x31.3	1
601490	Fitting, Bulkhead	1
140283	Nut, M05x.8 Nylock	1
130041	Wire Tie	4
150415	Fitting, Elbow 1/4mx3/8H	1
160497	Tubing 5/8ODx3/8ID, .5 ft	1
160498	Tubing 5/8ODx3/8ID, 1.25 ft	1
140310	Clamp, Hose	4
630138	Filter, Screen	1
603166	Switch, Float	1
604787	Harness, ES Wire	1
604858	Asm., Wire	1
604859	Asm., Wire	1
604788	Kit, Wire	1
630440	Decal, Filter Remove	1



IMPORTANT: Before drilling, make sure that template is properly aligned as indicated on template. Incorrect drilling may not allow proper clearance when closing recovery tank.

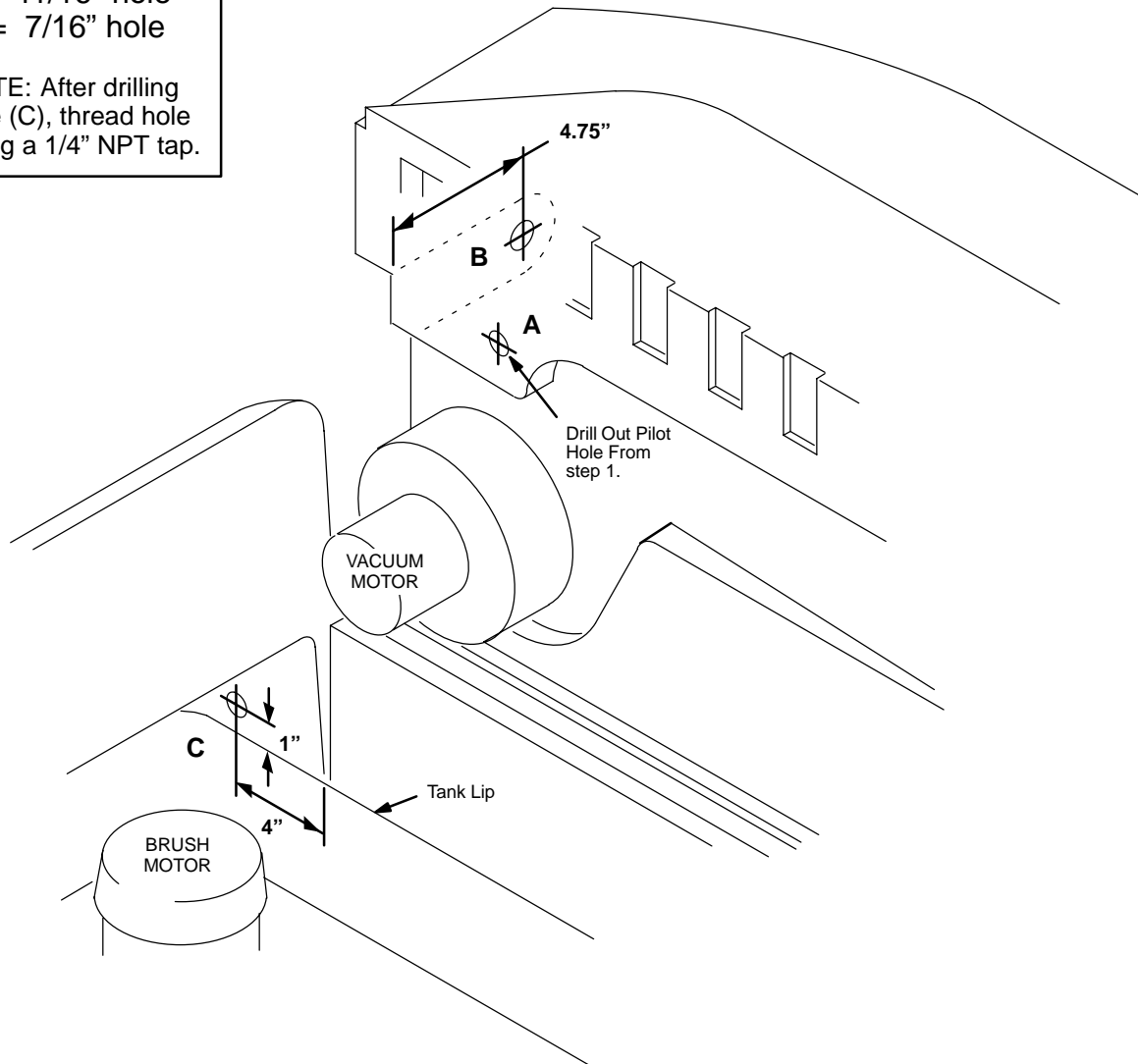
ES KIT

STEP 2: Drill holes as indicated

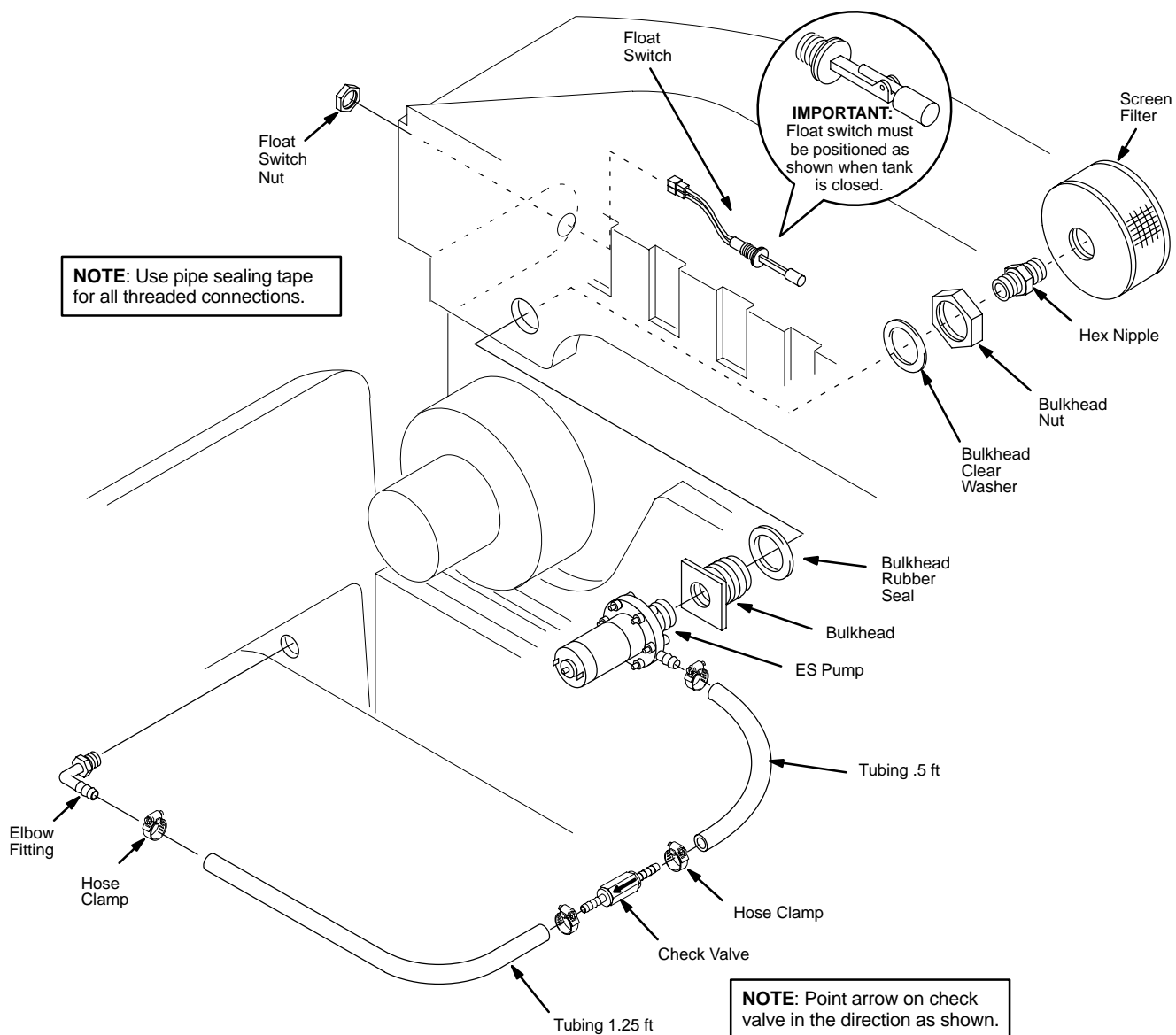
Hole Sizes:

A = 1-3/8" hole**B** = 11/16" hole**C** = 7/16" hole

NOTE: After drilling hole (C), thread hole using a 1/4" NPT tap.

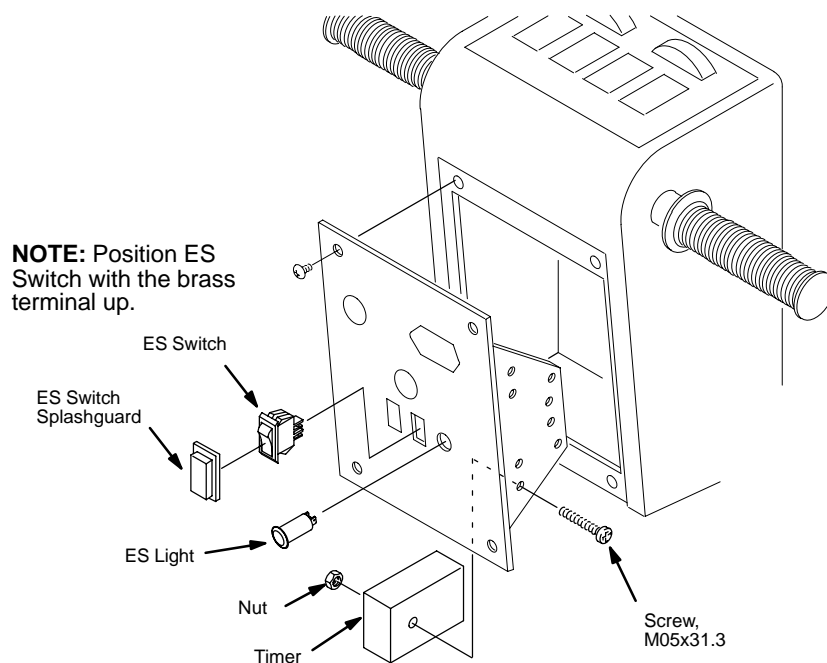


ES KIT

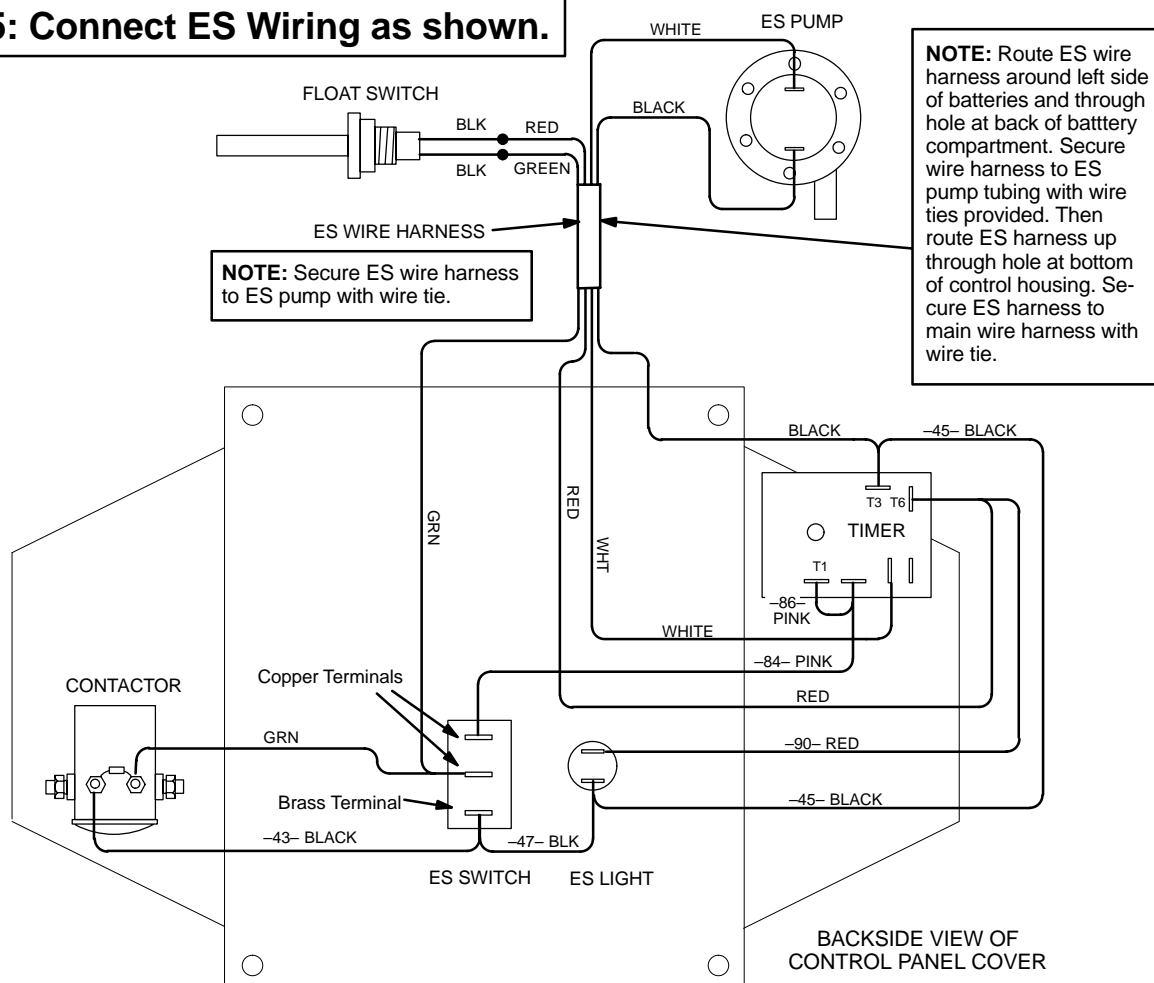
STEP 3: Install ES components as shown.

ES KIT

STEP 4: Install ES electrical components as shown.



STEP 5: Connect ES Wiring as shown.



2401/2601 Speed Scrub ES KIT TEMPLATE

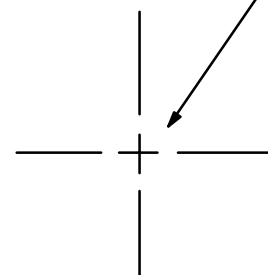
Align hole with
brass insert in tank.



Flush up template with tank edge as shown in STEP 1.

Pilot Hole Location

Use 1/8" drill bit to
drill pilot hole.



Cut Template along dotted line.