



AIR/FOAM FILLED & NEOPRENE TIRE KIT

AIR FILLED TIRE KIT CONTENTS (#604357)

Part No.	Description	Qty.
630215	Tire, Air Filled	2
630250	Decal, Air Pressure	2
140053	Washer	8

FOAM FILLED TIRE KIT CONTENTS (#604259)

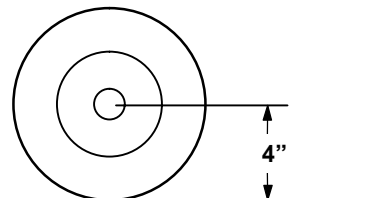
Part No.	Description	Qty.
600352	Tire, Foam Filled	2
140053	Washer	8

NEOPRENE TIRE KIT CONTENTS (#606754)

Part No.	Description	Qty.
640013	Wheel, Neoprene	2

FOR SAFETY: Before installing kit, disconnect positive (+) battery cable from batteries.

Air Filled Tires Only



For proper machine operation, inflate air filled tires to a rolling radius of 4".

INSTALLATION INSTRUCTIONS:

(Installation Time: 1/2 hour)

TOOL REQUIRED: 7/16" Socket Wrench

AIR/FOAM FILLED WHEEL

2401/2601
5500/5520

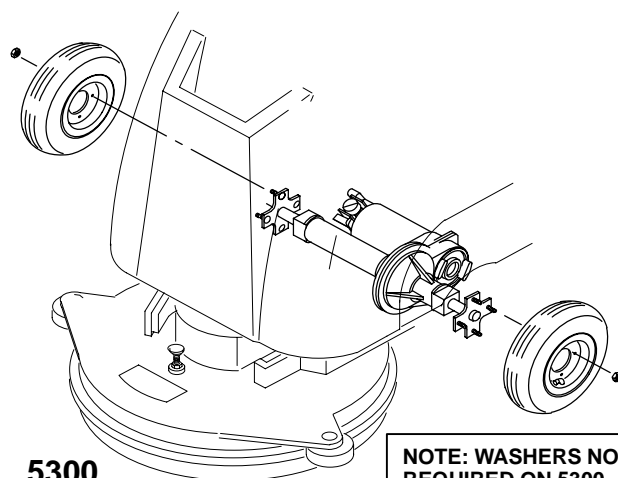
NOTE:
ONLY USE WASHERS ON
LEFT SIDE TIRE
(OPERATOR'S LEFT SIDE).

2 WASHERS
PER STUD

TIRE NUTS (4)

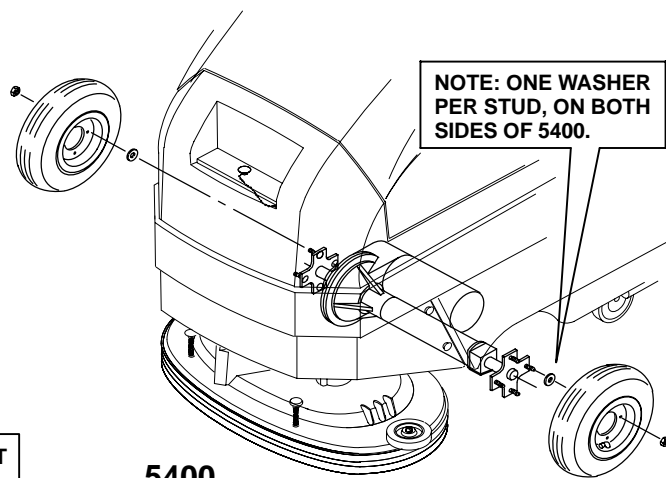
NEOPRENE WHEEL

NOTE: WASHERS
NOT REQUIRED.



5300

NOTE: WASHERS NOT
REQUIRED ON 5300.



5400

NOTE: ONE WASHER
PER STUD, ON BOTH
SIDES OF 5400.