



INSTRUCTION BULLETIN

No. 340862
Machine: S12
Published: 4-2007
Rev. 00

NOTE: DO NOT DISCARD the Parts List from the Instruction Bulletin. Place the Parts List in the appropriate place in the machine manual for future reference. Retaining the Parts List will make it easier to reorder individual parts and will save the cost of ordering an entire kit.

NOTE: Numbers in parenthesis () are reference numbers for parts listed in Bill of Materials.

Installation instructions for **kit number 9003462**

SYNOPSIS:

This kit contains the parts needed to install an optional right side brush on S12 sweepers.
Please follow step-by-step instructions.

SPECIAL TOOLS / CONSIDERATIONS: NONE

(Estimated time to complete: 2 hours)

PREPARATION:

1. Park the machine on a clean level surface, turn off the machine, remove the key, and set the parking brake.

FOR SAFETY: Before leaving or servicing machine, stop on level surface, set parking brake, turn off machine, and remove key.

2. Remove the main cover from the machine. Set the main cover aside.
3. Disconnect the battery cables from the batteries.



WARNING: Always disconnect battery cables from machine before working on electrical components.

INSTALLATION:

NOTE: Do Not discard parts removed to install the right side brush onto the machine. All removed parts are reinstalled after the brush is installed.

NOTE: The Right Side Brush assembly is assembled at the factory. The complete parts list at the end of this Instruction Bulletin and the complete exploded view in Fig. 10 are provided for reference only. Do Not disassemble components that are already assembled.

1. Remove the gasket from the front of the machine. Set the gasket aside. Refer to Fig. 1.



FIG. 1

2. Remove the foot plates from the machine. Set both foot plates and all mounting hardware aside. Refer to Fig. 2.



FIG. 2

3. Cut the cable tie securing the side brush connector of the main wire harness to the frame of the machine. Refer to Fig. 3.



FIG. 3

4. Insert the rods on the brush mount (24) into the holes in the frame of the machine. Refer to Fig. 10.
5. Use one M8 screw (3), M10.5 flat washer (2), and M8 nut (1) to attach the side brush assembly to the machine. Refer to Fig. 10.
6. Use an M8 nut (1) to install the M8 screw (4) onto the frame of the machine. Refer to Fig. 10.
7. Attach the spring (23) on the side brush assembly to the frame of the machine. Refer to Fig. 4 and Fig. 10.



FIG. 4

8. Connect the main harness to the cable from the side brush motor (21). Refer to Fig. 5.



FIG. 5

9. Route the cable (13) attached to the side brush assembly through the notch in the side brush motor cover (15) and use an M8 screw (9), M8 nut (1), and M6 nut (8) to attach the cable to the side brush motor plate (25). Refer to Fig. 10.
10. Neatly bundle excess cable from the side brush motor (21) and use a cable tie (30) to secure the side brush motor cable to the main harness. Refer to Fig. 6.



FIG. 6

11. Reinstall the foot plates onto the machine.
Refer to Fig. 7.



FIG. 7

12. Align the key of the brush adapter (22) with the key way on the shaft of the side brush motor (21) and use a M6 wing bolt (16) and a washer (18) to install the brush (26) onto the motor. Refer to Fig. 8, Fig. 9, and Fig. 10.



FIG. 8

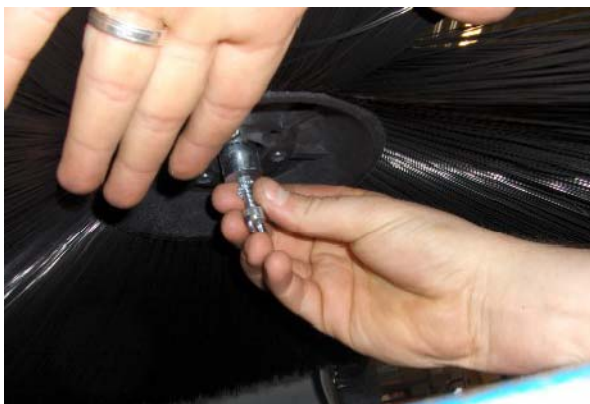


FIG. 9

13. Reconnect the battery cables to the batteries.
14. Reinstall the main cover onto the machine.
15. Start the machine and test the right side brush. Check the brush level.
16. If necessary, adjust the side brush level. Refer to the Operator Manual for instructions how to adjust the side brush level.

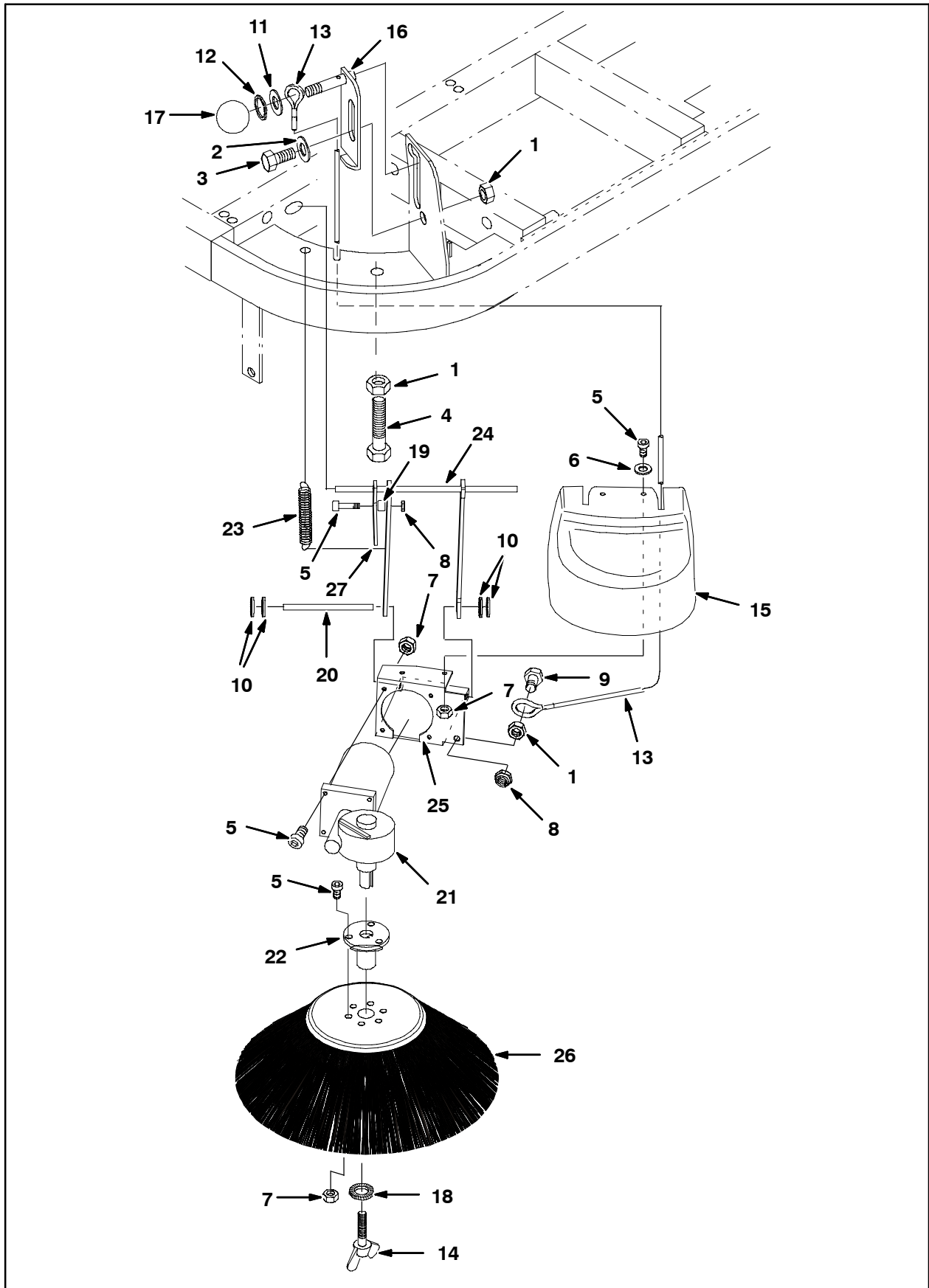


FIG. 10

Bill of Materials for Brush Kit, Side, RH, CI [S12]-9003462

	Ref.	Tennant Part No.	Description	Qty.
▽		9003462	Brush Kit, Side, RH, CI [S12]	1
▲	1	384591	VR, Nut, M8	3
▲	2	384571	VR, Washer, Flat, M10.5	1
▲	3	384620	VR, Screw, M8 X 20MM	1
▲	4	384622	VR, Screw, M8 X 50MM	1
▲	5	384598	VR, Screw, M6 X 16MM	9
▲	6	384645	VR, Washer, Flat, M6.4	2
▲	7	384587	VR, Nut, M6	9
▲	8	384629	VR, Nut, M6	2
▲	9	384600	VR, Screw, M8 X 25MM	1
▲	10	384650	VR, Washer, Lock	4
▲	11	384572	VR, Washer, Flat, M10	1
▲	12	384814	VR, Ring, Snap	1
▲	13	384770	VR, Cable	1
▲	14	384812	VR, Bolt, Wing, M6 X 16	1
▲	15	384515	VR, Cover, Motor, Side Brush	1
▲	16	384772	VR, Adj, RH Side Brush	1
▲	17	384711	VR, Handle	1
▲	18	384833	VR, Washer	1
▲	19	384810	VR, Bushing	1
▲	20	384779	VR, Shaft	1
▲	21	384776	VR, Motor, Brush, RH, 24VDC	1
▲	22	384780	VR, Adapter, Brush	1
▲	23	384760	VR, Spring	1
▲	24	384773	VR, Mount, Brush, LH	1
▲	25	384778	VR, Plate, Motor, RH Side Brush	1
▲	26	384782	VR, Brush, Disk, Swp, 16.0D 406MM, Std	1
▲	27	384567	VR, Stop, Brush, Side	1
▲	28	384634	VR, Nut, M8	1
▲	29	06948	Screw, Hex, M6 X 1.0 X 45, 8.8	2
▲	30	384656	VR, Tie, Cable	2
▲	31	384610	VR, Screw, M6 X 25MM	1

*NOTE: Most of the Right Side Brush assembly is assembled at the factory. The complete parts list above and exploded view in Fig. 10 are provided for reference only. **Do Not** disassemble components that are already assembled.*

TENNANT COMPANY
P. O. Box 1452
Minneapolis, MN 55440-1452