



INSTRUCTION BULLETIN

No. 340861
Machine: S12
Published: 4-2007
Rev. 00

NOTE: DO NOT DISCARD the Parts List from the Instruction Bulletin. Place the Parts List in the appropriate place in the machine manual for future reference. Retaining the Parts List will make it easier to reorder individual parts and will save the cost of ordering an entire kit.

NOTE: Numbers in parenthesis () are reference numbers for parts listed in Bill of Materials.

Installation instructions for **kit number 9003460**

SYNOPSIS:

This kit contains the parts needed to install an optional left side brush on S12 sweepers.
Please follow step-by-step instructions.

SPECIAL TOOLS / CONSIDERATIONS: NONE

(Estimated time to complete: 2 hours)

PREPARATION:

1. Park the machine on a clean level surface, turn off the machine, remove the key, and set the parking brake.

FOR SAFETY: Before leaving or servicing machine, stop on level surface, set parking brake, turn off machine, and remove key.

2. Disconnect the battery cables from the batteries.



WARNING: Always disconnect battery cables from machine before working on electrical components.

INSTALLATION:

NOTE: Do Not discard parts removed to install the left side brush onto the machine. All parts must be reinstalled after the brush is installed.

NOTE: Most of the Left Side Brush assembly is assembled at the factory. The complete parts list at the end of this Instruction Bulletin and exploded view in Fig. 10 are provided for reference only. Do Not disassemble components that are already assembled.

1. Remove the gasket from the front of the machine. Set the gasket aside. Refer to Fig. 1.



FIG. 1

2. Remove the foot plates from the machine. Set both foot plates and all mounting hardware aside. Refer to Fig. 2.



FIG. 2

3. Cut the cable tie securing the left side brush connector of the main wire harness to the frame of the machine. Refer to Fig. 3.



FIG. 3

4. Use one M8 screw (3), one M10.5 flat washer, and one M8 nut to attach the left side brush assembly to the machine. Refer to Fig. 10.
5. Insert the rods on the loose end of the 4-hole brush mount into the holes in the frame of the machine. Refer to Fig. 10.
6. Attach the spring (23) on the left side brush assembly to the frame of the machine. Refer to Fig. 4.



FIG. 4

7. Connect the main harness to the cable from the side brush motor (21). Refer to Fig. 5.



FIG. 5

8. Slide the ring on the loose end of the cable (13) onto the rod on the side brush adjustment plate (16) and use one M10 flat washer (11) and snap ring (12) to secure the ring onto the rod. Refer to Fig. 10.
9. Thread the handle (17) onto the rod on the side brush adjustment plate (16). Refer to Fig. 10.
10. Thread the handle (17) onto the side brush adjustment plate (16). Refer to Fig. 10.
11. Neatly bundle any excess cable from the main wire harness and the side brush motor (21) and use a cable tie (30) to secure the excess cables together to the frame of the machine. Refer to Fig. 6.



FIG. 6

12. Reinstall the foot plates onto the machine.
Refer to Fig. 7.



FIG. 7

13. Align the key of the brush adapter (22) with the key way on the shaft of the side brush motor (21) and use a M6 wing bolt (16) and a washer (18) to install the brush (26) onto the motor. Refer to Fig. 8, Fig. 9, and Fig. 10.



FIG. 8

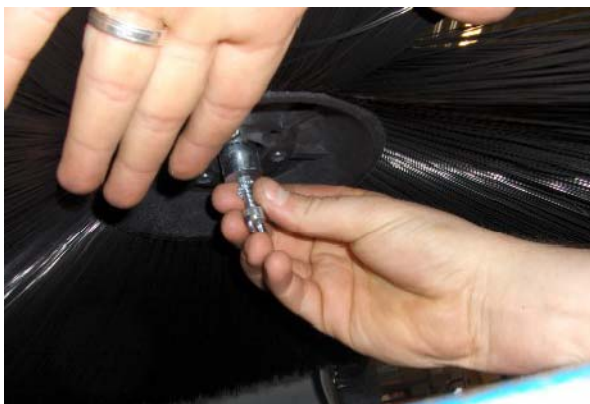


FIG. 9

14. Reconnect the battery cables to the batteries.
15. Reinstall the main cover onto the machine.
16. Start the machine and test the right side brush. Check the brush level.
17. If necessary, adjust the side brush level. Refer to the Operator Manual for instructions how to adjust the side brush level.

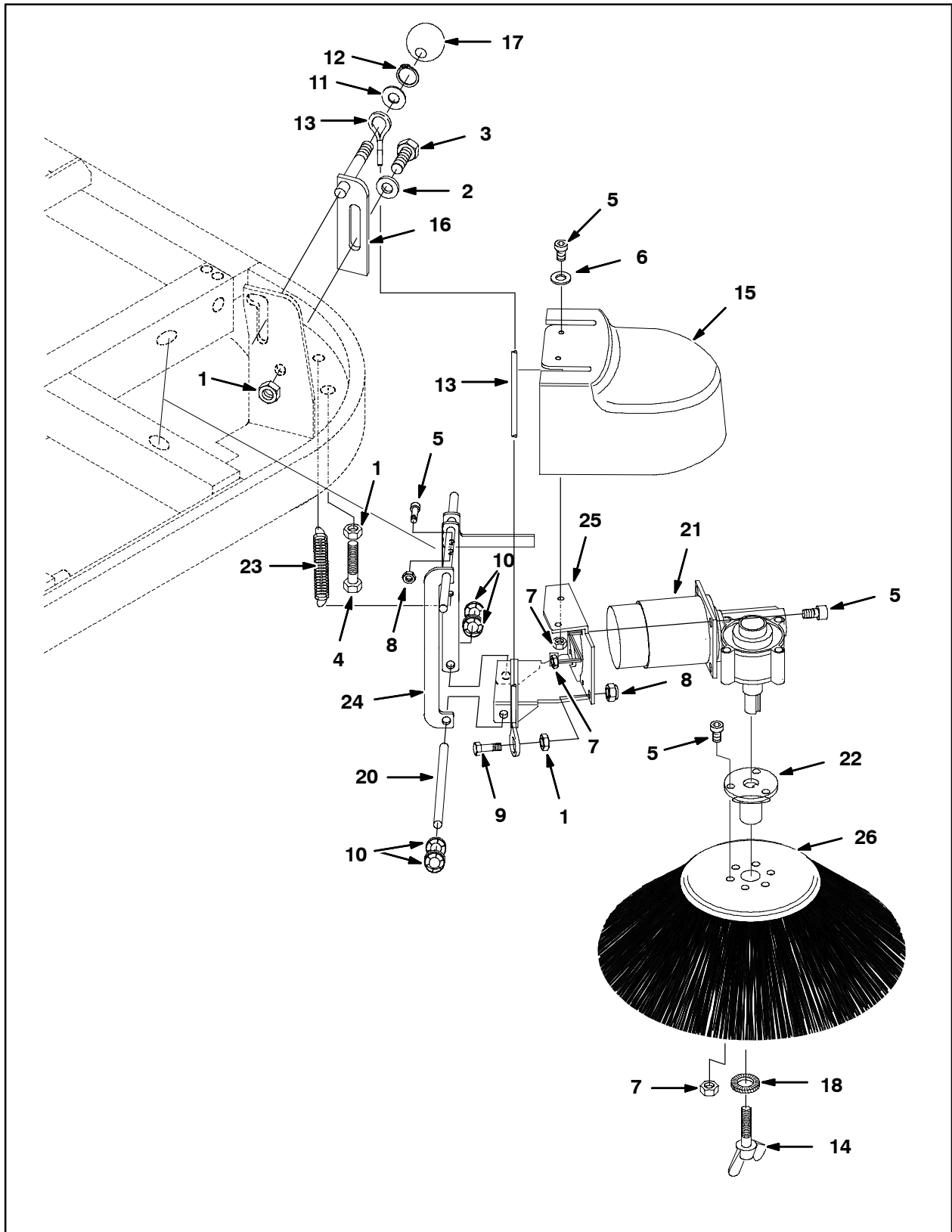


FIG. 10

Bill of Materials for Brush Kit, Side, LH, CI [S12]-9003460

	Ref.	Tennant Part No.	Description	Qty.
▽		9003460	Brush Kit, Side, LH, CI [S12]	1
▲	1	384591	VR, Nut, M8	3
▲	2	384571	VR, Washer, Flat, M10.5	1
▲	3	384620	VR, Screw, M8 X 20MM	1
▲	4	384622	VR, Screw, M8 X 50MM	1
▲	5	384598	VR, Screw, M6 X 16MM	9
▲	6	384645	VR, Washer, Flat, M6.4	2
▲	7	384587	VR, Nut, M6	9
▲	8	384629	VR, Nut, M6	2
▲	9	384600	VR, Screw, M8 X 25MM	1
▲	10	384650	VR, Washer, Lock	4
▲	11	384572	VR, Washer, Flat, M10	1
▲	12	384814	VR, Ring, Snap	1
▲	13	384770	VR, Cable	1
▲	14	384812	VR, Bolt, Wing, M6 X 16	1
▲	15	384515	VR, Cover, Motor, Side Brush	1
▲	16	384771	VR, Adj, LH Side Brush	1
▲	17	384711	VR, Handle	1
▲	18	384833	VR, Washer	1
▲	19	384810	VR, Bushing	1
▲	20	384779	VR, Shaft	1
▲	21	384775	VR, Motor, Brush, LH, 24VDC	1
▲	22	384780	VR, Adapter, Brush	1
▲	23	384760	VR, Spring	1
▲	24	384774	VR, Mount, Brush, 4Hole	1
▲	25	384777	VR, Plate, Motor, LH Side Brush	1
▲	26	384782	VR, Brush, Disk, Swp, 16.0D 406MM, Std	1
▲	27	384567	VR, Stop, Brush, Side	1
▲	28	384634	VR, Nut, M8	1
▲	29	06948	Screw, Hex, M6 X 1.0 X 45, 8.8	2
▲	30	384656	VR, Tie, Cable	2
▲	31	384610	VR, Screw, M6 X 25MM	1

*NOTE: Most of the Left Side Brush is assembled at the factory. The complete parts list above and exploded view in Fig. 10 are provided for reference only. **Do Not** disassemble components that are already assembled.*

TENNANT COMPANY
P. O. Box 1452
Minneapolis, MN 55440-1452