



# INSTRUCTION BULLETIN

No. 340785  
Machine: 7400 ES/  
8410 ES  
Published: 11-2005  
Rev. 00

**NOTE: DO NOT DISCARD the Parts List from the Instruction Bulletin. Place the Parts List in the appropriate place in the machine manual for future reference. Retaining the Parts List will make it easier to reorder individual parts and will save the cost of ordering an entire kit.**

*NOTE: Numbers in parenthesis ( ) are reference numbers for parts listed in Bill of Materials.*

Installation instructions for **kit number 377422**

## SYNOPSIS:

This kit contains the parts needed to replace the discontinued ES pump with back flush with an ES pump without back flush on 7400 ES/8410 ES machines.  
Please follow step-by-step instructions.

## SPECIAL TOOLS / CONSIDERATIONS: NONE

(Estimated time to complete: 1.5 hours)

## PREPARATION:

1. Park the machine on a clean level surface and turn off the machine, turn off the machine, remove the key, and set the parking brake.

**FOR SAFETY: Before leaving or servicing machine, stop on level surface, turn off machine, set parking brake, and remove key.**

2. Disconnect the battery cables from the batteries.



**WARNING: Always disconnect battery cables from machine before working on electrical components.**

3. Empty the solution tank and the recovery tank.  
Refer to Operators Manual for instructions.

4. Open the solution tank cover.

## INSTALLATION:

1. Disconnect the main wire harness from the existing ES pump (A). Refer to Fig. 2.
2. Tie off the back flush connector located on the main wire harness so the connector is out of the way. The back flush connector is not used on the new ES pump assembly. Refer to Fig. 2.
3. Remove all lettered items (A through G) from the solution and recovery tanks. Discard all parts removed in this step. Refer to Fig. 1.

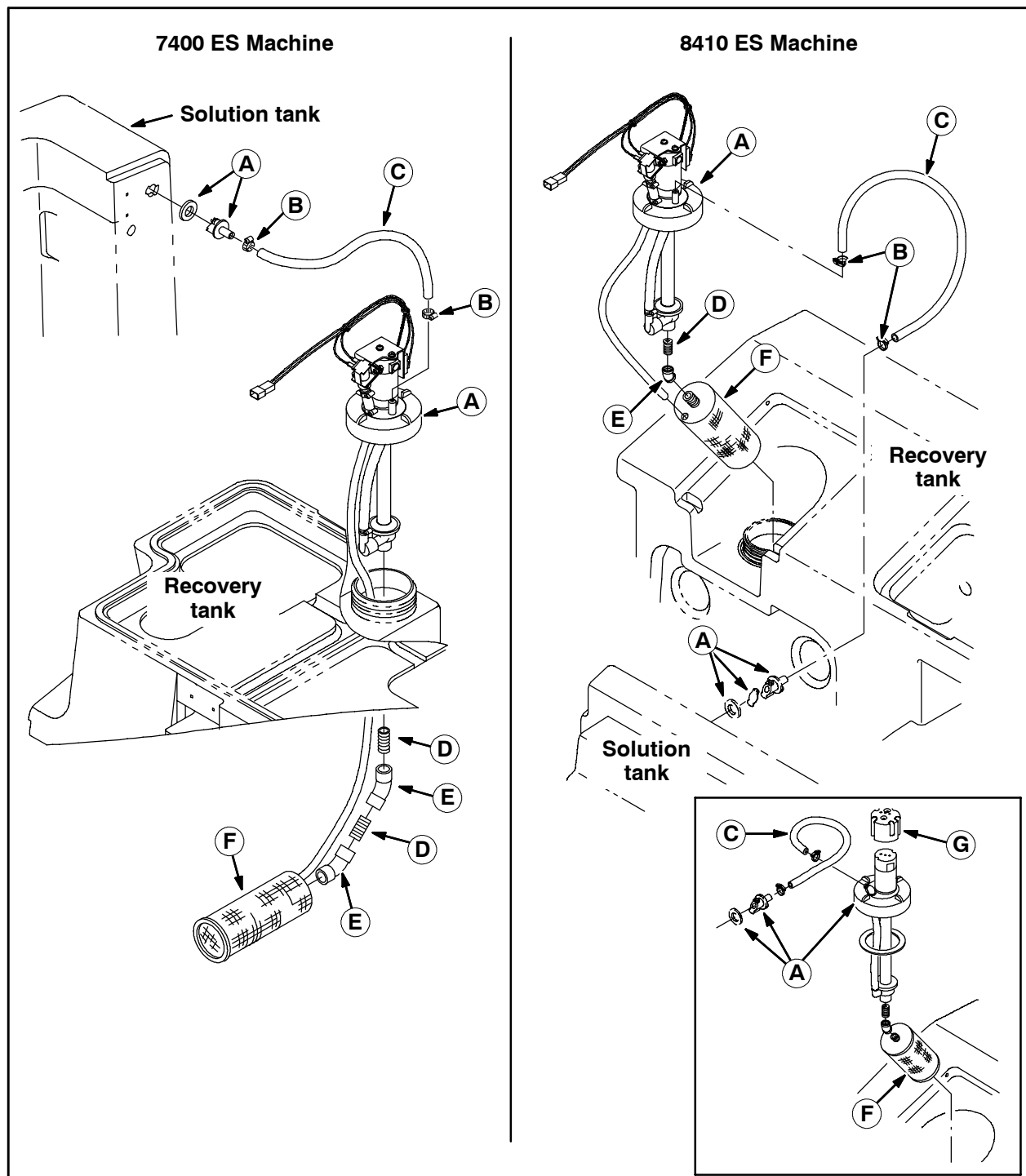


FIG. 1

**NOTE:** Refer to Fig.3 for 7400 ES machines and Fig. 4 for 8410 ES machines.

4. **7400 ES only:** Install two 45° plastic fittings (4) and straight plastic fittings (5) onto the new ES pump assembly (1).
- 8410 ES only:** Install one 45° plastic fitting (4) and straight plastic fitting (5) onto the new ES pump assembly (1).
5. Install the solution strainer (3) onto the 45° plastic fitting (4) installed in the previous step.
6. Thread the new ES pump assembly (1) into the port in the recovery tank where the old ES pump assembly was previously located.
7. Use a hose clamp (7) to attach the PVC hose (6) to the new ES pump assembly (1).
8. Install the gasket from the ES pump assembly (1) onto the valve from the ES pump assembly (1).

9. Insert the valve/gasket from the ES pump assembly (1) into the hole in the solution tank where the valve/gasket from the old ES pump assembly were previously located.
10. **8410 ES only:** Stretch the PVC hose (6) from the ES pump assembly to the valve from the ES pump assembly (1) and cut excess length from the hose.
11. Use a hose clamp (7) to attach the loose end of the PVC hose (6) to the valve from the new ES pump assembly (1).
12. Connect the pump jumper harness (2) to the ES pump assembly (1).
13. Connect the other end of the pump jumper harness (2) to the main wire harness. Refer to Fig. 2.
14. Reconnect the battery cables to the batteries.
15. Operate the machine to test the new ES pump assembly.

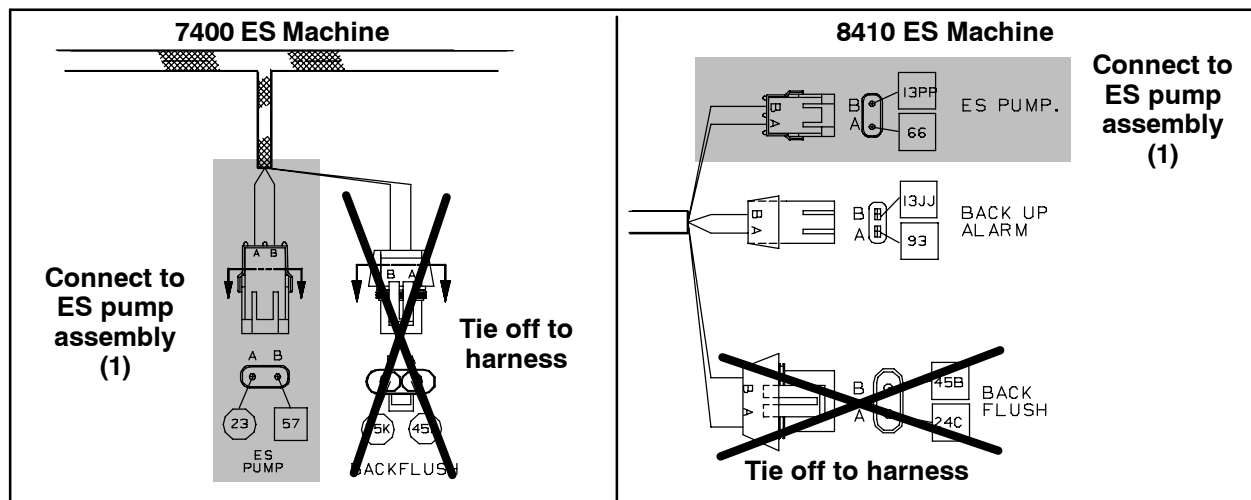


FIG. 2

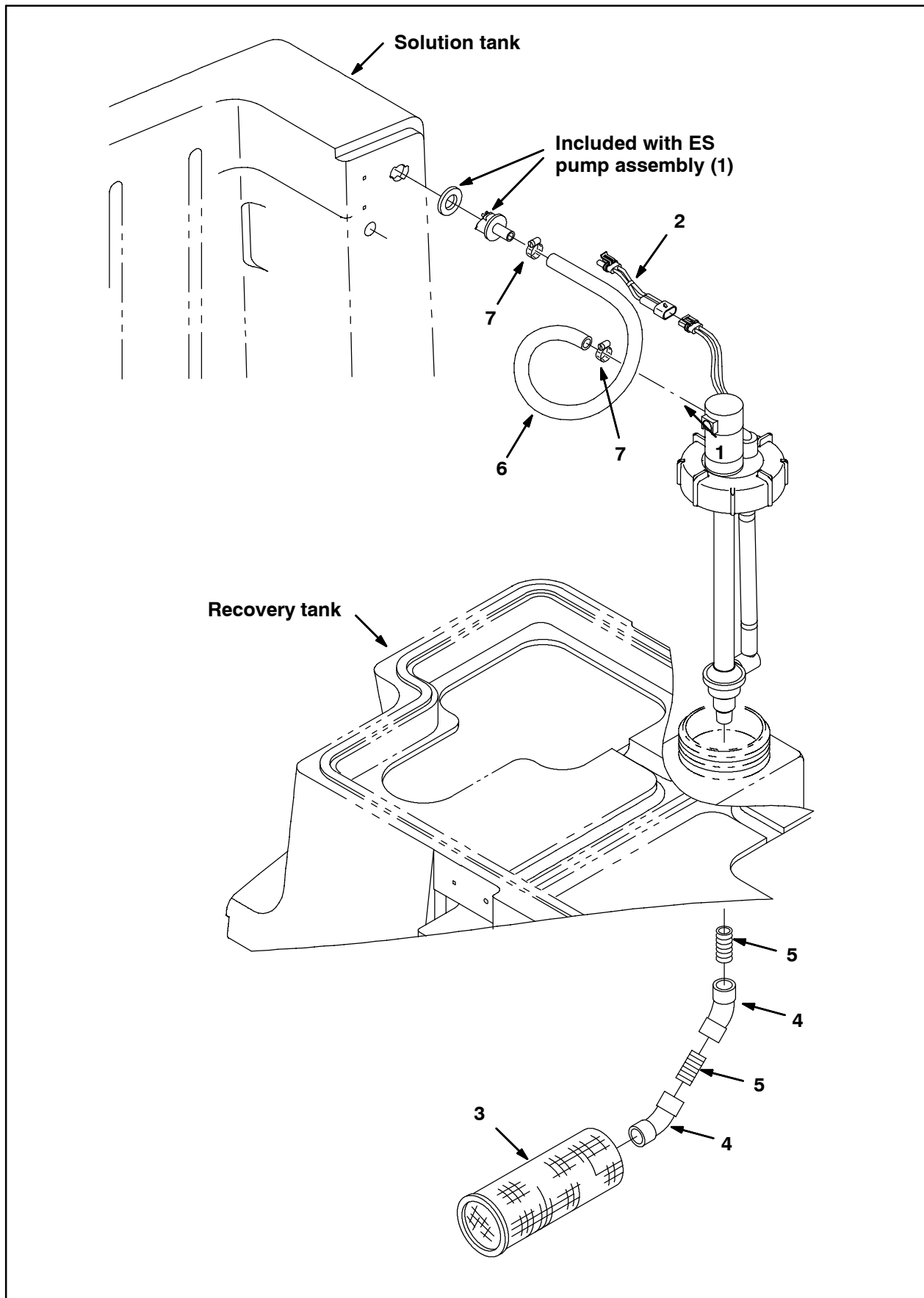


FIG. 3-7400 ES Machine

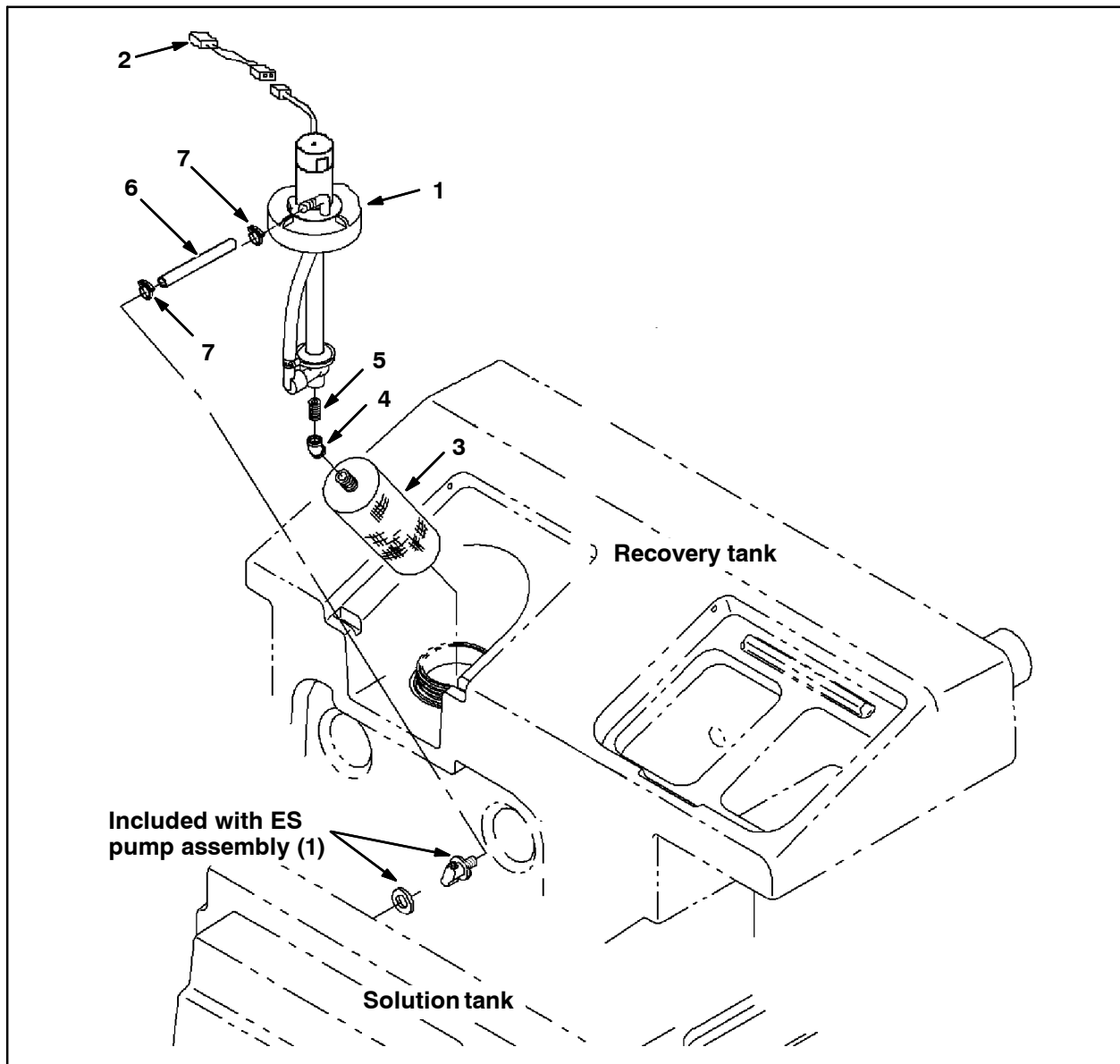


FIG. 4-8410 ES Machine

Bill for Materials for Kit, Replmt, Pump, ES F/20891 [7400/8410]-377422

Ref.	Tennant Part No.	Description	Qty.
▽	377422	Kit, Replmt, Pump, ES F/20891 [7400/8410]	1
▲	1 1021210	Pump Assy, Column, ES	1
▲	2 391946	Harness, Jumper, Pump [7400/8410]	1
▲	3 10573	Strainer, Soltn, 20Mesh Cyl 4.0D 8.0L	1
▲	4 10575	Fitting, Plstc, E45, PF12/PF12	2
▲	5 69784	Fitting, Plstc, Str, PM12/PM12 Close	2
▲	6 73472	Hose, PVC, Brd, 0.62ID 0.88OD 18.00L	1
▲	7 36824	Clamp. Hose, Wormdrive, 0.50-1.06D, .50W	2

TENNANT COMPANY  
P. O. Box 1452  
Minneapolis, MN 55440-1452