



# INSTRUCTION BULLETIN

No. 340696  
Machine: 7200  
Pre-sweep  
Published: 12-2004  
Rev. 00

**NOTE: DO NOT DISCARD the Parts List from the Instruction Bulletin. Place the Parts List in the appropriate place in the machine manual for future reference. Retaining the Parts List will make it easier to reorder individual parts and will save the cost of ordering an entire kit.**

*NOTE: Numbers in parenthesis ( ) are reference numbers for parts listed in Bill of Materials.*

Installation instructions for **kit number 369813**

## SYNOPSIS / PROBLEM:

This kit contains the parts needed to replace the right brush side mount plate on 7200 scrubbers with the pre-sweep option.

Please follow step-by-step instructions.

## SPECIAL TOOLS / CONSIDERATIONS: NONE

(Estimated time to complete: 1 hour)

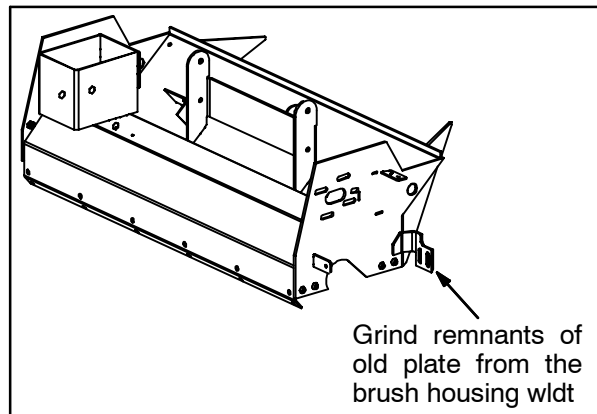
## PREPARATION:

1. Park the machine on a clean level surface.
2. Turn off the machine, remove the key, and set the parking brake.

**FOR SAFETY: Before leaving or servicing machine, stop on level surface, set parking brake, turn off machine, and remove key.**

## INSTALLATION:

1. Prepare (remove remnants of old plate, scrape old paint, etc...) the area where the old RH brush side mount plate is mounted onto the brush housing wldt. Refer to Fig. 1.



**FIG. 1**

2. Position the new RH brush side mount plate (1) onto brush housing wldt and the mark area where the rh brush side mount plate is to be welded onto the brush housing wldt. Refer to Fig. 2 for dimensions.
3. Weld the rh brush side mount plate (1) onto the brush housing wldt.
4. Paint the rh brush side mount plate (1). Paint any areas of the brush housing wldt near the rh brush side mount plate that may also require paint.

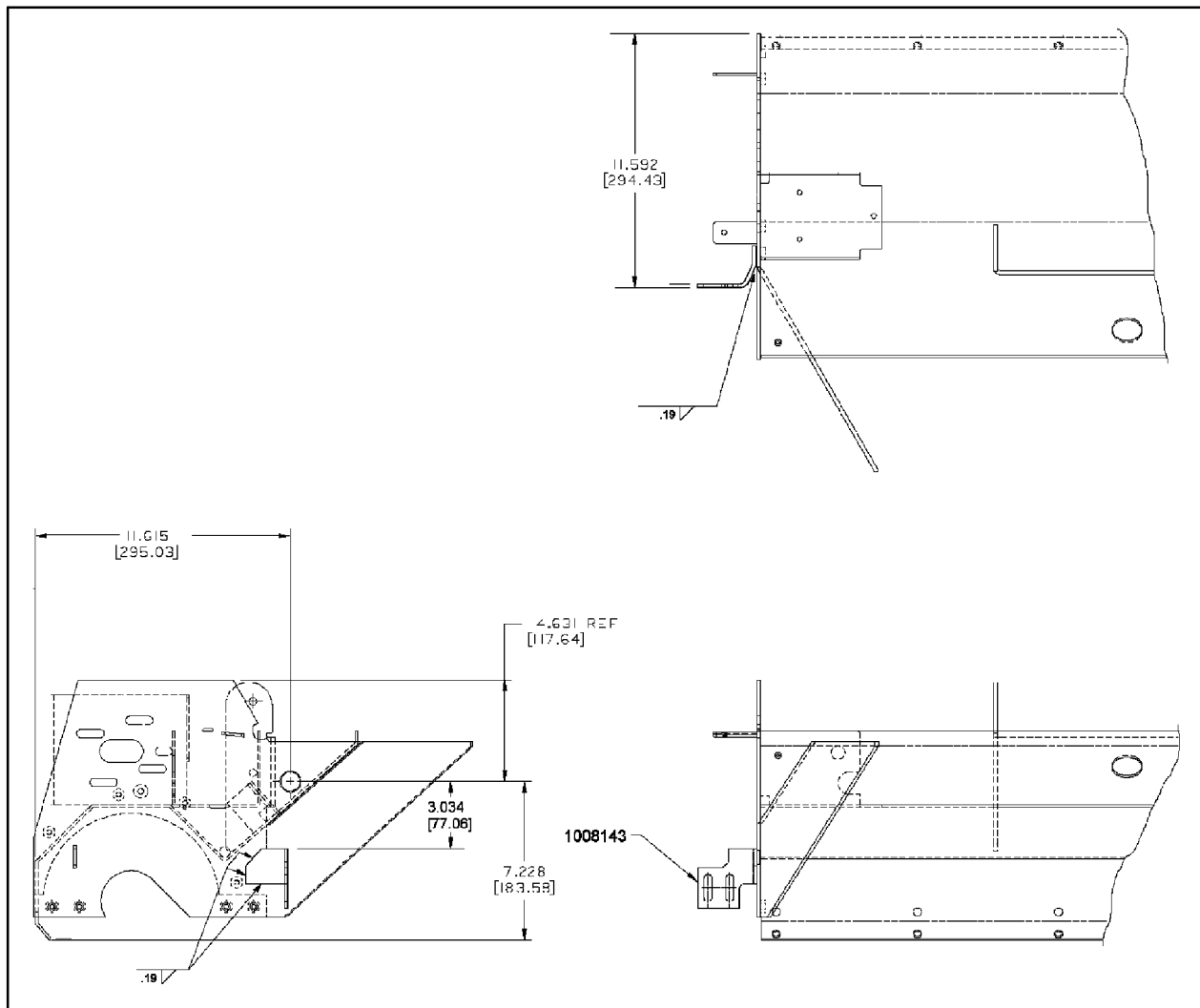


FIG. 2

Bill of Materials for Kit, Replmt, Bracket, F/392155-(369813)

Ref.	Tennant Part No.	Description	Qty.
▽	369813	Kit, Replmt, Bracket, F/392155	1
▲	1 1008143	Plate, Mount, Side, Brush, RH	1

TENNANT COMPANY  
P. O. Box 1452  
Minneapolis, MN 55440-1452