



INSTRUCTION BULLETIN

No. 340693
Machine: 6600, 6650
Published: 3-04
Rev. 00

NOTE: DO NOT DISCARD the Parts List from the Instruction Bulletin. Place the Parts List in the appropriate place in your machine manual for future reference. Retaining the Parts List will make it easier to reorder individual parts and will save you the cost of ordering an entire kit.

NOTE: Numbers in parenthesis () are reference numbers for parts listed in Bill of Materials.

Installation instructions for **kit number 377141**

DESCRIPTION:

This kit contains the parts needed to install a vacuum wand kit on the model 6600 and 6650 sweepers.

Please follow step-by-step instructions.

SPECIAL TOOLS / CONSIDERATIONS: Need the help from an assistant.

(Estimated time to complete: 2 hours)

PREPARATION:

(Refer to FIG. 1 and 2)

1. Stop the machine on a clean level surface.

FOR SAFETY: Before leaving or servicing machine, stop on level surface and set parking brake. Then turn off machine and remove key.

HOPPER COVER REMOVAL / INSTALLATION:

(Refer to FIG. 1 and 2)

1. Open hopper cover.
2. Remove the hardware connecting the guide cable to the hopper cover. Save for reinstallation. (Refer to FIG.1)
3. Remove Gas spring safety clips, while an assistant is holding up the hopper cover. Save for reinstallation. (Refer to FIG.1)
4. Lower the hopper cover, and remove the upper hinge hardware to separate the hopper cover from the hinge. Save for reinstallation. (Refer to FIG.1)
5. Lift the hopper cover off of the hopper with the help of an assistant and place upside down on the floor.
6. Remove mounting hardware and hopper cover brackets from existing hopper cover. Save for reinstallation. (Refer to FIG.1)
7. Remove hopper hold down bracket. Save for reinstallation. (Refer to FIG.1)
8. Install the new **hopper cover (44)** by reversing the previous steps. (Refer to FIG. 2)

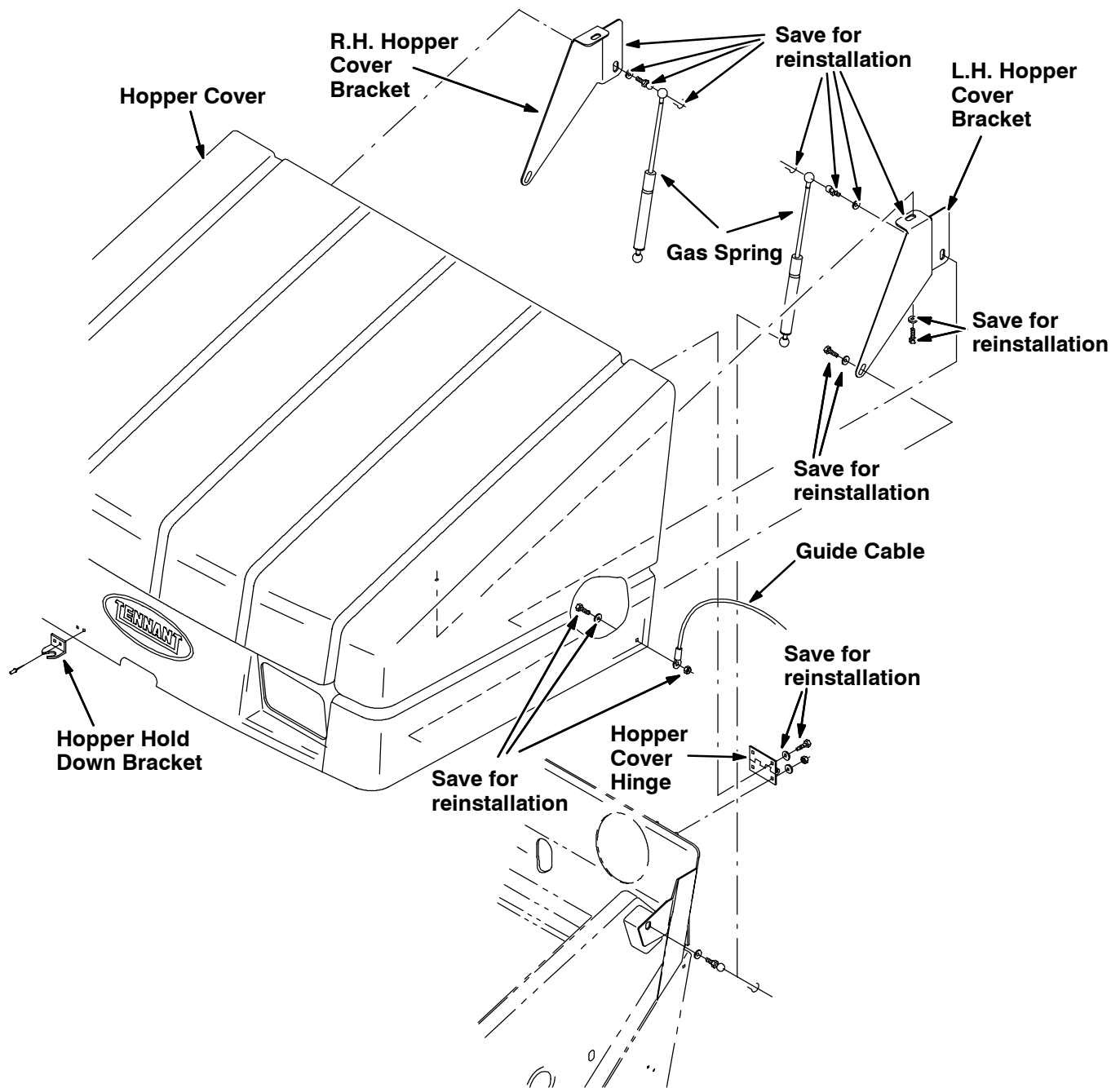


FIG. 1 - Hopper Cover Replacement

VACUUM WAND INSTALLATION:

(Refer to FIG. 2)

1. Install **hopper tube weldment 1007965 (2)** in the large hole, from the back side of the hopper. Secure **flange gasket (3)** and **ring flange (4)** to the front side of the hopper with four **pan screws 377165 (5)** and **flat washers 19065 (6)** and **hex nuts 02850 (7)**.
(Refer to FIG. 3)
2. Loosely mount **hinge spacers 1008304 (12)** to the front of the hopper cover with **hex screws 06947 (13)** and **flat washers 32483 (14)**. (Refer to FIG. 3)
3. Mount **vacuum door 1010600 (8)** to the **hinge spacers 1008304 (12)** with **door hinges 367950 (10)** and **pan screws 06947 (11)**. (Refer to FIG. 3)
4. Install **hanger bracket 1009116 (27)** on the right hand side of the machine. Torque the mounting hardware to 16–21 ft lb. (Refer to FIG. 3)
5. Assemble **tube gasket 1008724 (19)** and **rubber strips 1008734 (20)** to **bracket weldment 1008713 (15)** with **Loctite adhesive 68198**. (Refer to FIG. 3)
6. Assemble **rubber straps 1009429 (21)** and **1009795 (24)** to **bracket weldment 1008713 (15)**. (Refer to FIG. 3)
7. Assemble the bracket weldment assembly to the machine frame. Install a **3 in long piece of molding 74068 (26)** to the mounting bracket. Assemble the bracket weldment assembly to the machine with **two hex screws 16931 (16)**, **flat washers 39349 (17)** and **flange nuts 07791 (18)**. Torque the mounting hardware to 16–21 ft lb. (Refer to FIG. 3)
8. Assemble **vacuum wand handle 32822 (34)** to **vacuum wand tube 1008192 (32)** with **mounting bracket 1009122 (35)** on the handle end closest to the end of the tube. Insert **spacer 1009167 (36)** beneath the other end of the handle. Secure the assembly with four **thread rolling screws 361339 (38)** into **backing plate 69937 (37)**. (Refer to FIG. 3)
9. Assemble the **vacuum wand bumper 382634 (33)** to the other end of **vacuum wand tube 1008192 (32)** with **wormdrive clamp 23498 (42)**. (Refer to FIG. 3)
10. Assemble **vacuum hose (39)** to vacuum wand tube assembly with **wormdrive clamp 23498 (42)**. **NOTE: The direction of the vacuum hose is critical. The ridges on the inside of the hose should face away from the tube so the debris will slide through the vacuum hose without catching.** (Refer to FIG. 3)
11. Assemble **hanger strap 1009163 (1)** to vacuum **hose assembly 1009540 (41)**.
(Refer to FIG. 3)
12. Connect **vacuum wand tube 1009811 (40)** to both vacuum hose assemblies with **two wormdrive clamps 23498 (42)**. (Refer to FIG. 3)
13. Mount vacuum wand assembly to the machine. (Refer to FIG. 3)
14. Turn the machine power on, and check the vacuum wand for proper operation.

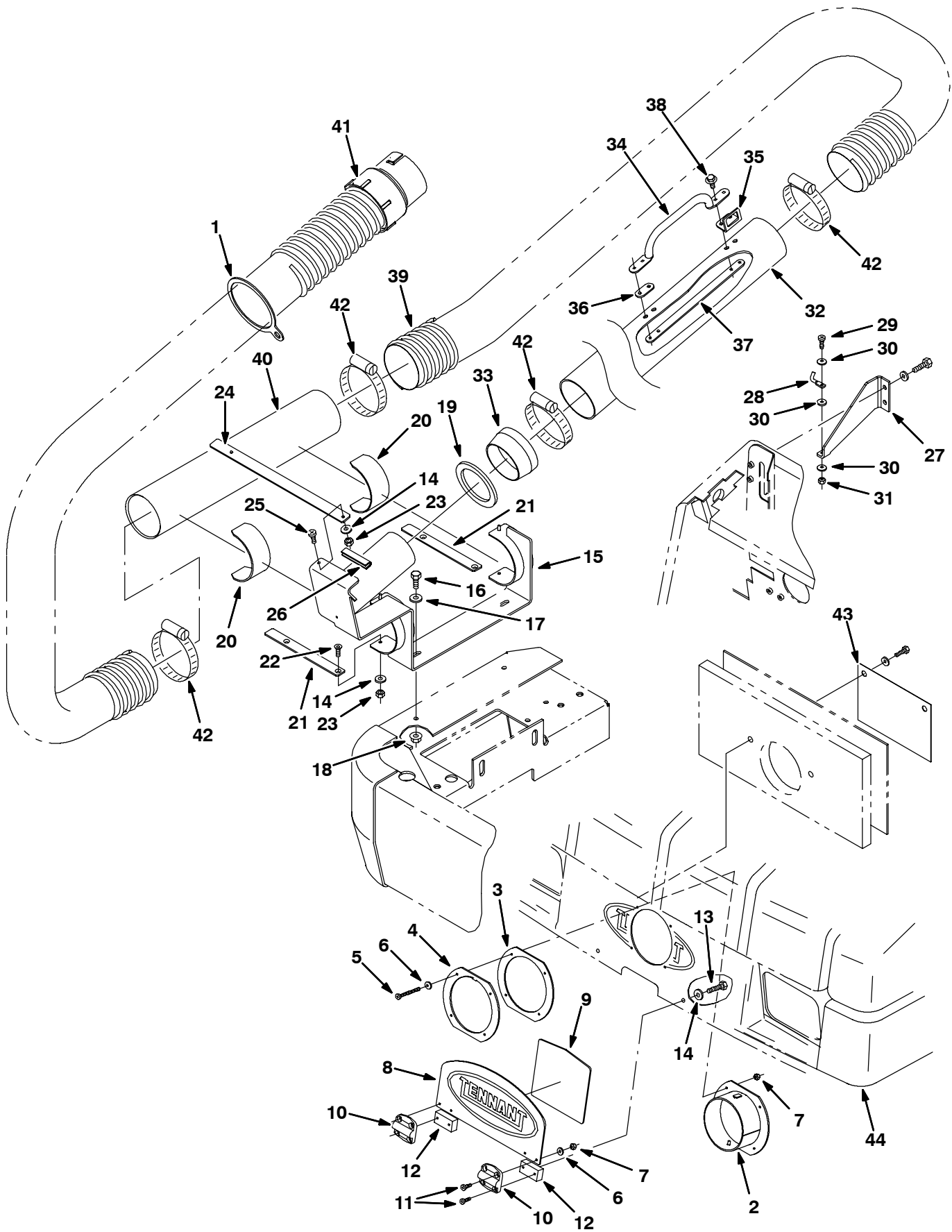


FIG. 2 - Vacuum Wand Kit Installation

BILL OF MATERIALS FOR VACUUM WAND KIT 377141

Ref.	TENNANT Part No.	Description	Qty.
1	1009163	Strap, Mtg, Cuff	1
2	1007965	Tube Wldt, Hppr	1
3	1008629	Gasket, Flange	2
4	1008611	Flange, Ring	1
5	377165	Screw, Pan, M4 X 0.7 X 60, 4.8	4
6	19065	Washer, Flat, #08	4
7	02850	Nut, Hex, Lock, M4 X 0.7, NI	4
8	1010600	Door, Vacuum, W/Label [6600/6650]	1
9	1007993	Gasket, Door	1
10	367950	Hinge, 40 pin 2.2w 2.0l4/0.21h	2
11	06927	Screw, Pan, M4 X 0.7 X 16, 4.8	8
12	1008304	Spacer, Hinge	2
13	06947	Screw, Hex, M6 X 1.0 X 40, 8.8	2
14	32483	Washer, flat, 0.25 Sae	5
15	1008713	Bracket Wldt, Wand	1
16	16931	Screw, Hex, M8 X 1.25 X 20, 8.8	2
17	39349	Washer, Flat, 0.31 SAE	2
18	07791	Nut, Hex, Flng, M08 X 1.25	2
19	1008724	Gasket, Tube	1
20	1008734	Strip, Rbr, 0.13 02.00w 7.21	2
21	1009429	Strap, Hose	2
22	09062	Screw, Flt, M06 X 1.0 X 16, 10.9	2
23	08708	Nut, Hex, Lock, M6 X 1.0, NI	3
24	1009795	Strap, Hose	1
25	09145	Screw, Pan, M6 X 1.0 X 16, 4.8	1
26	74068	Molding, Trim, Pvc, 0.18-0.31 02.81	1
27	1009116	Bracket, Wand	1
28	1009366	Bar, Wand	1
29	06934	Screw, Pan, M5 X 0.8 X 20, 4.8	1
30	19066	Washer, Flt, #10	3
31	06549	Nut, Hex, Lock, M5 X 0.8, NI	1
32	1008192	Tube, Wand, Vacuum	1
33	382634	Bumper, Wand, Vacuum	1
34	32822	Handle	1
35	1009122	Bracket, Mtg, Wand	1

36	1009167	Spacer, Handle	1
37	69937	Plate, Backing, Handle	1
38	361339	Screw, Hex, M6 X 1.0 X 16, Fmg	4
39	1009847	Hose, Vacuum, 4.00id X 53.0l	1
40	1009811	Tube, Wand	1
41	1009540	Hose Assy, W/1 cuff, 4.0d, 87.81, 4.0	1
42	23498	Clamp, Hose, Wormdrive, 3.56-4.50d	4
43	1010537	Flap, Vac Wand	1
44	377162	Cover, Hppr, Rwk	1

TENNANT COMPANY
P. O. Box 1452
Minneapolis, MN 55440-1452