



INSTRUCTION BULLETIN

No. 340678

Machine: 355, 385, 528, 6500,
6550, 7400, 8200, 8210

Published: 11-2004

Rev. 01

NOTE: DO NOT DISCARD the Parts List from the Instruction Bulletin. Place the Parts List in the appropriate place in the machine manual for future reference. Retaining the Parts List will make it easier to reorder individual parts and will save the cost of ordering an entire kit.

NOTE: Numbers in parenthesis () are reference numbers for parts listed in Bill of Materials.

Installation instructions for **kit number 374280**

SYNOPSIS:

This kit contains the parts needed to replace the ignition control module on 1.3L machines listed above. Please follow step-by-step instructions.

SPECIAL TOOLS / CONSIDERATIONS: To complete the conversion, a new ignition control module, MAP sensor, angle bracket, engine wire harness, and mounting hardware must be installed. The 8200 and 8210 models also require a new governor controller and ignition module mounting bracket.

(Estimated time to complete: 1 hour)



PROTECT THE ENVIRONMENT

Please dispose of packaging materials, old machine components, and hazardous fluids in an environmentally safe manner according to local waste disposal regulations.

Always remember to recycle.

PREPARATION:

1. Park the machine on a clean level surface, turn off the machine, remove the key, and set the parking brake.

FOR SAFETY: Before leaving or servicing machine, stop on level surface, turn off the machine, remove the key, and set the parking brake.

2. Disconnect the battery cables from the battery.



WARNING: Always disconnect the battery cables from the machine before working on electrical components.

INSTALLATION: (Refer to Fig. 1)

1. Remove the old ignition module from the machine.

2. **8200 and 8210 models:** Remove the bracket holding the old ignition module and governor controller. Install the new bracket (2), and remount the governor controller and the new ignition module (1) with the two common mounting holes facing down. Use the pan screws (4) and lock nuts (6) to fasten the new ignition module and MAP sensor angle bracket.

3. **6500, 6550, and 7400 models:** Use the MAP sensor angle bracket (2) as a template to drill new holes for mounting hardware in the same location as the previous ignition module. Mount the new ignition module (1) and MAP sensor angle bracket on a vertical surface with the pan screws (4) and lock nuts (6), with the two common mounting holes facing down.

4. Use the pan screws (5), flat washers (7), and lock nuts (6) to attach the MAP sensor to the MAP sensor angle bracket. Be sure the hose fitting for the MAP sensor is facing down.

5. Connect the vacuum hose to the MAP sensor vacuum fitting.

6. Note the connections and layout of the old engine wire harness and remove the harness from the engine.
7. Locate the fuel selection connectors (labeled: GAS and LPG) on the new harness, a few inches out from the 23-pin ignition module connector. Connect the appropriate gas or LPG connector to the plug labeled "connect for fuel selection"
8. Route the new engine wire harness along the same path as the old wire harness and reconnect the wire harness to the appropriate components.
9. Reconnect the battery cables to the batteries.
10. Start and test the machine to ensure it operates correctly.

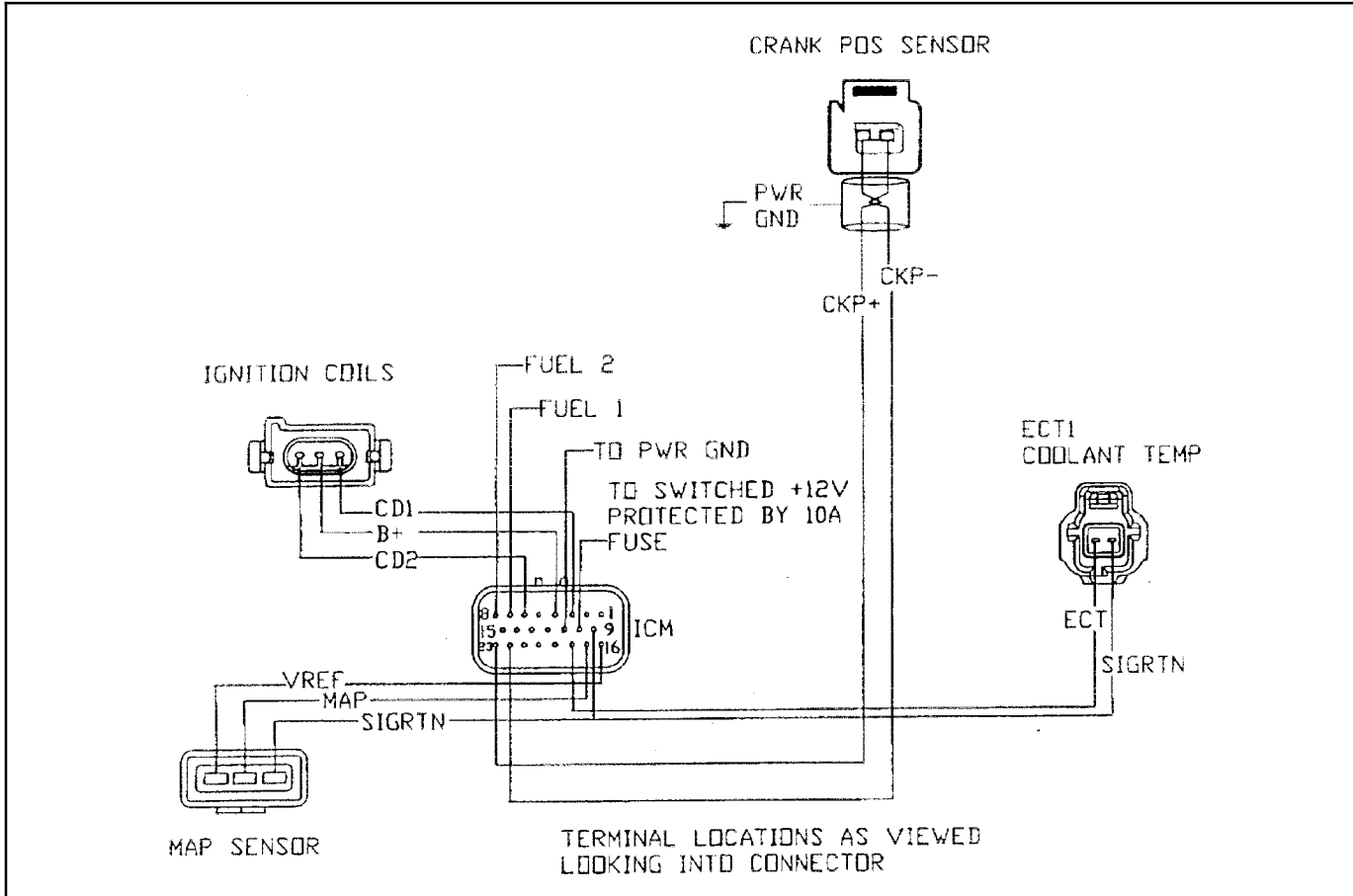


FIG. 1 - Ignition System Schematic

Bill of Materials for Ignition Module Replacement Kit-374280

Ref.	TENNANT Part No.	Description	Qty.
1	374282	Module Kit, Cntrl, Ignition	1
2	375414	Bracket, Sensor, Map	1
3	375419	Plate, Control Box	1
4	382726	Screw, Pan, M6 X 1.0 X 25, 4.8	3
5	06945	Screw, Hex, M6 X 1.0 X 30, 8.8	2
6	08708	Nut, Hex, Lock, M6 X 1.0, NL	5
7	19066	Washer, Flt, #10	2

TENNANT COMPANY
P. O. Box 1452
Minneapolis, MN 55440-1452