



INSTRUCTION BULLETIN

No. 340654
Machine: 7300/8300
Published: Mar-04
Rev. 00

NOTE: DO NOT DISCARD the Parts List from the Instruction Bulletin. Place the Parts List in the appropriate place in your machine manual for future reference. Retaining the Parts List will make it easier to reorder individual parts and will save you the cost of ordering an entire kit.

NOTE: Numbers in parenthesis () are reference numbers for parts listed in Bill of Materials.

Installation instructions for **kit number 387675 & 387676**

SYNOPSIS / PROBLEM:

This kit contains the parts needed to install a debris tray kit with vacuum onto the model 7300 and 8300 sweepers.

Please follow step-by-step instructions.

SPECIAL TOOLS / CONSIDERATIONS: NONE

(Estimated time to complete: 1 hour)

1. Park the machine on a clean level surface.
2. Turn the machine power on and lower the scrub head and the rear squeegee.
3. Turn off the machine.

FOR SAFETY: Before leaving or servicing machine, stop on level surface, turn off machine, and remove key.

4. Raise the rear cover and secure cover into place with the cover support rod.
5. Disconnect the battery cables.



WARNING: Always disconnect battery cables from machine before working on electrical components.

6. Disconnect the vacuum hose from the rear squeegee.
7. Loosen the breakaway knobs and remove the rear squeegee from the machine.
8. Open the battery compartment door located at the rear of the machine.
9. Disconnect the safety cable from the battery pack.

10. Use a chain hoist or lift to remove the battery pack from the machine.

FOR SAFETY: Use a chain hoist or lift capable of supporting the weight of the battery pack.

11. Remove the vacuum hose retainer bracket from the machine. Refer to Figure 1 for location of vacuum hose retainer bracket.
12. Remove the appropriate battery spacer from the machine to allow easier access for removing and replacing parts.
13. Cut away and discard the wire ties holding the recovery tank vacuum hose into place.
14. Disconnect the top end (A) of the vacuum hose from the recovery tank (Refer to Fig 1).
15. Disconnect the other end (B) of vacuum hose from the squeegee (Refer to Fig 1).
16. Discard the vacuum hose.
17. Remove the existing debris tray (C) from the machine (Refer to Fig 1).
18. Install the angle (16) onto the debris tray (1). Refer to Fig 2 for locations/orientation of parts assembled in Steps 18 through 37.

19. Install the screen weldment (6) into the debris tray (1).
 20. Install the spring clip (2) onto the debris tray (1).
 21. Install the tube weldment (7), the foam gasket (9), and upper tube weldment (10) onto the debris tray (1).
 22. Install hose assembly (12) onto the upper tube weldment (10) attached to the debris tray (1).
 23. Insert the straight end of the vacuum hose (14) into the recovery tank.
 24. Secure vacuum hose (14) into place with the vacuum hose retainer bracket.
 25. Insert the tube weldment (13) (refer to Fig 2 for orientation of the tube) into the other end of vacuum hose (14).
 26. Tighten a hose clamp (17) around the vacuum hose (14), securing the tube weldment (13) into place inside the vacuum hose (14).
 27. Slide hose assembly (15) onto the tube weldment (13).
 28. Tighten a hose clamp (17) around hose assembly (15), securing tube weldment (13) into place inside hose assembly (15).
 29. Slide hose assembly (12) onto the tube weldment (13).
 30. Tighten a hose clamp (18) around hose assembly (12), securing tube weldment (13) into place inside hose assembly (12).
 31. Route vacuum hose (14), and hose assemblies attached in previous steps, down along the side of the recovery tank and towards the bottom of the machine.
 32. Route hose assembly (12), hose assembly (15), and the tube weldment (13) underneath the machine.
 33. Route the loose end of hose assembly (15) down to the squeegee and attach it to the squeegee.
 34. Secure the debris tray (1) to the right side of the machine.
 35. Route hose assembly (12) to the tube weldment (10) attached to the debris tray (1) and attach it to tube weldment (10).
 36. Use hose clamps and wire ties to secure vacuum hose (14), hose assembly (15), and hose assembly (12) to the machine.
 37. Install tube bracket (19) onto the frame of the machine.
 38. Reinstall the battery spacer removed in Step 12 back into the appropriate location.
 39. Use a chain hoist or lift to reinstall battery pack back into the the battery compartment.
- FOR SAFETY: Use a chain hoist or lift capable of supporting the weight of the battery pack.**
40. Reconnect the safety cable back onto the battery pack.
 41. Close the battery compartment door.
 42. Reconnect the battery cables.
 43. Close the rear machine cover.
 44. Turn on the machine power.
 45. Check machine for proper operation.

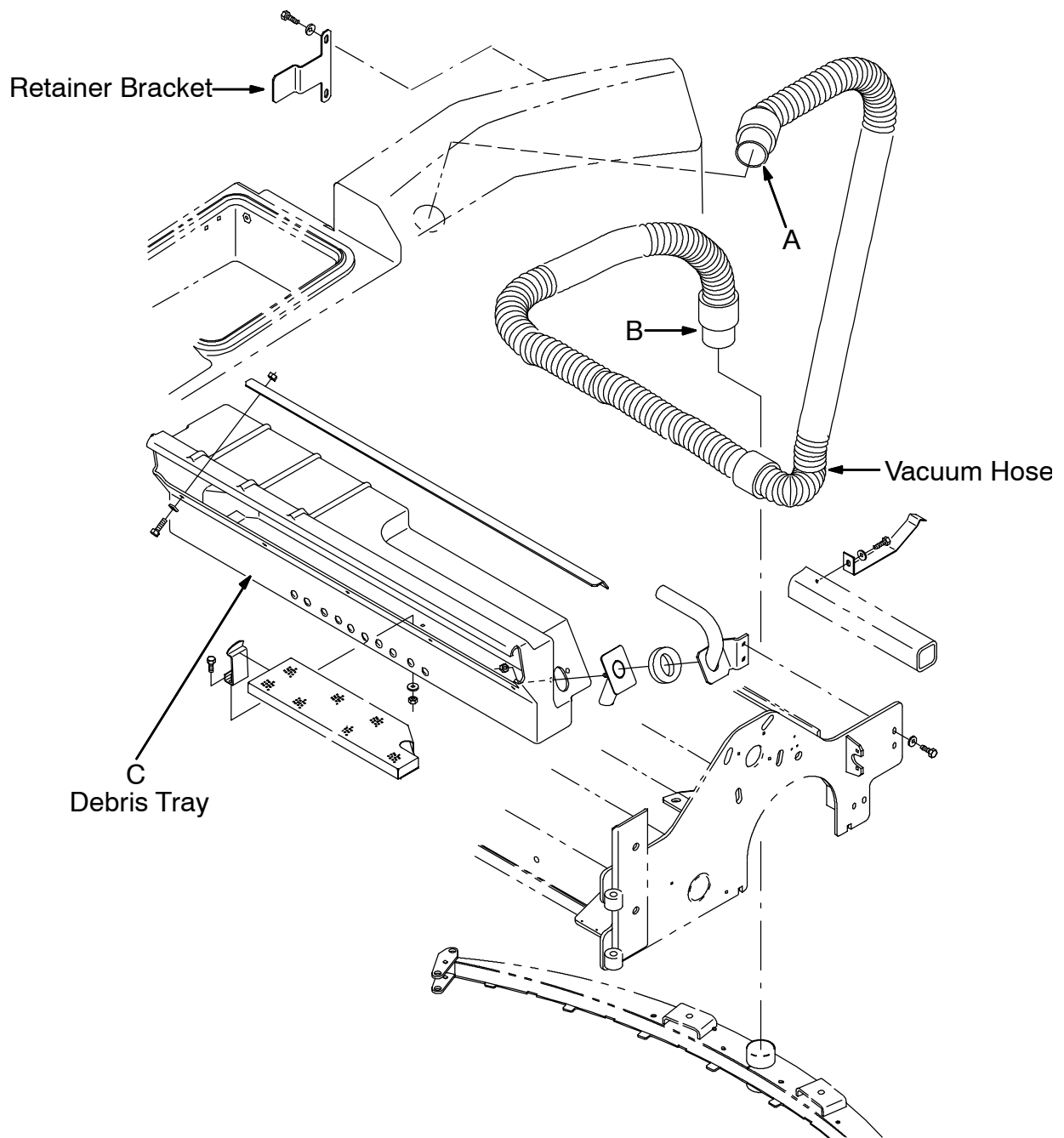
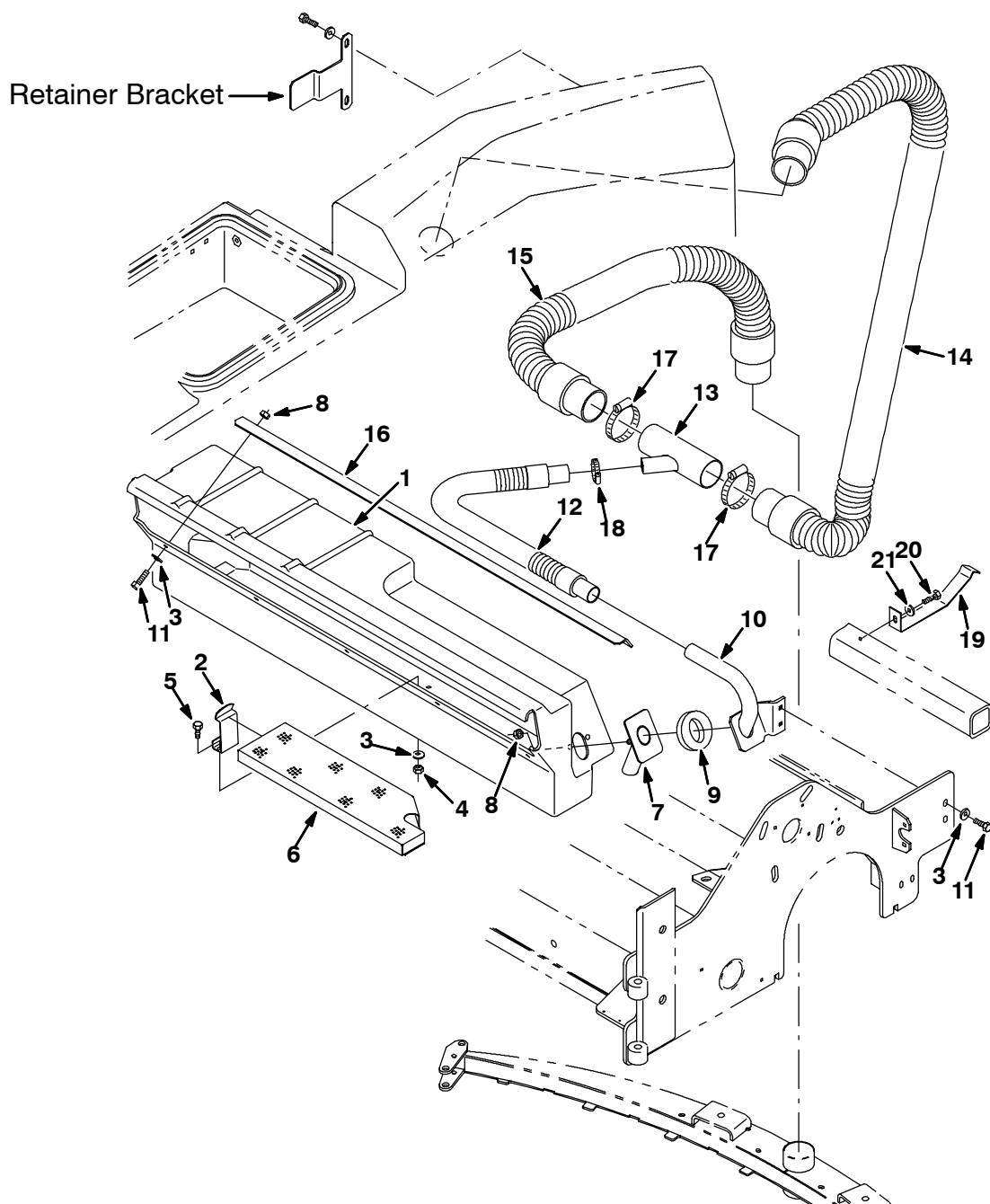


FIG. 1



Bill of Materials for Max Pro™ 1000 (Cylindrical Brush) Vacuumized Debris Tray Kit 387675

Ref.	Tennant Part No.	Description	Qty.
1	386282	Tray, Debris, 40.0l	1
2	87244	Clip, Spring, Prop Arm	1
3	01684	Washer, Flt, .25 Ss	14
4	08712	Nut, Hex, Lock, M06 X 1.0, NI, Ss	2
5	09744	Screw, Hex, M06 X 1.0 X 12, Ss	2
6	386500	Screen Wldt	1
7	386503	Tube Wldt	1
8	08712	Nut, Hex, Lock, M06 X 1.0, NI, Ss	7
9	386504	Gasket, Foam	1
10	386510	Tube Wldt, Upper	1
11	08716	Screw, Hex, M06 X 1.0 X 20, Ss	7
12	387517	Hose Assy, W/2cuff, 1.0d, 41l	1
13	386518	Tube Wldt	1
14	1005133	Hose Assy, W/2cuff, 2.0d 75l	1
15	1005135	Hose Assy, W/2cuff, 2.0d 26l	1
16	387253	Angle	1
17	14432	Clamp, Hose, Wormdrive, 1.81-2.75d	2
18	11399	Clamp, Hose, Wormdrive, 0.81-1.50d	1
19	1002464	Bracket, Tube , Tee	1
20	361339	Screw, Hex, M 6 X 1.0 X 16, Fmg	1
21	32483	Washer, Flat, 0.25 Sae	1

Bill of Materials for Max Pro™ 1200 (Cylindrical Brush) Vacuumized Debris Tray Kit 387676

Ref.	Tennant Part No.	Description	Qty.
1	386513	Tray, Debris, 48.0l	1
2	87244	Clip, Spring, Prop Arm	1
3	01684	Washer, Flt, .25 Ss	14
4	08712	Nut, Hex, Lock, M06 X 1.0, NI, Ss	2
5	09744	Screw, Hex, M06 X 1.0 X 12, Ss	2
6	386500	Screen Wldt	1
7	386503	Tube Wldt	1
8	08712	Nut, Hex, Lock, M06 X 1.0, NI, Ss	7
9	386504	Gasket, Foam	1
10	386510	Tube Wldt, Upper	1
11	08716	Screw, Hex, M06 X 1.0 X 20, Ss	7
12	387517	Hose Assy, W/2cuff, 1.0d, 41l	1
13	386518	Tube Wldt	1
14	1005133	Hose Assy, W/2cuff, 2.0d 75l	1
15	1005135	Hose Assy, W/2cuff, 2.0d 26l	1
16	387254	Angle	1
17	14432	Clamp, Hose, Wormdrive, 1.81-2.75d	2
18	11399	Clamp, Hose, Wormdrive, 0.81-1.50d	1
19	1002464	Bracket, Tube , Tee	1
20	361339	Screw, Hex, M 6 X 1.0 X 16, Fmg	1
21	32483	Washer, Flat, 0.25 Sae	1

TENNANT COMPANY
P. O. Box 1452
Minneapolis, MN 55440-1452