



# INSTRUCTION BULLETIN

No. 340646  
Machine: 6600, 6650  
Published: 7-03  
Rev. 00

**NOTE: DO NOT DISCARD the Parts List from the Instruction Bulletin. Place the Parts List in the appropriate place in your machine manual for future reference. Retaining the Parts List will make it easier to reorder individual parts and will save you the cost of ordering an entire kit.**

*NOTE: Numbers in parenthesis ( ) are reference numbers for parts listed in Bill of Materials.*

Installation instructions for **kit number 377144**

## DESCRIPTION:

This kit contains the parts needed to install a **side brush dust control [SBDC]** kit on the model 6600 and 6650 sweepers.

Please follow step-by-step instructions.

**SPECIAL TOOLS / CONSIDERATIONS:** Hand drill, 1/4 in. [6.35 mm] drill bit, 7/32 in. [5.55 mm] and 7/16 [11.11 mm] drill bits

(Estimated time to complete: 1 hour)

## PREPARATION:

(Refer to FIG. 1 thru 6)

1. Start the machine.
2. Raise the machine hopper and engage the hopper support bar.

**FOR SAFETY: Before leaving or servicing machine, stop on level surface and set parking brake. Then turn off machine and remove key.**

3. Turn the machine off. Disconnect battery cables from machine.



**WARNING: Always disconnect battery cables from machine before working on electrical components.**

## INSTALLATION:

(Refer to FIG. 1, 2 and 3)

1. Remove side brush from machine for easier installation of new parts.
2. **HOPPER:** Drill three 1/4 inch diameter holes in right side of hopper.  
Refer to FIG. 1 and 2 for hole locations. Drill holes in hopper on side brush side only.
3. Install right skirt (13) and right retainer plate (14) on right side of hopper with three hexforming screws (26), three flat washers (12), and three lock nuts (27).
4. Drill eight 7/32 inch diameter holes (four holes for each wheel pocket) in wheel pocket frame. Refer to FIG. 3 for hole locations.

*NOTE: Do not use retainer plate (10) for a hole location template. Holes will be offset when rubber skirt (9) is installed.*

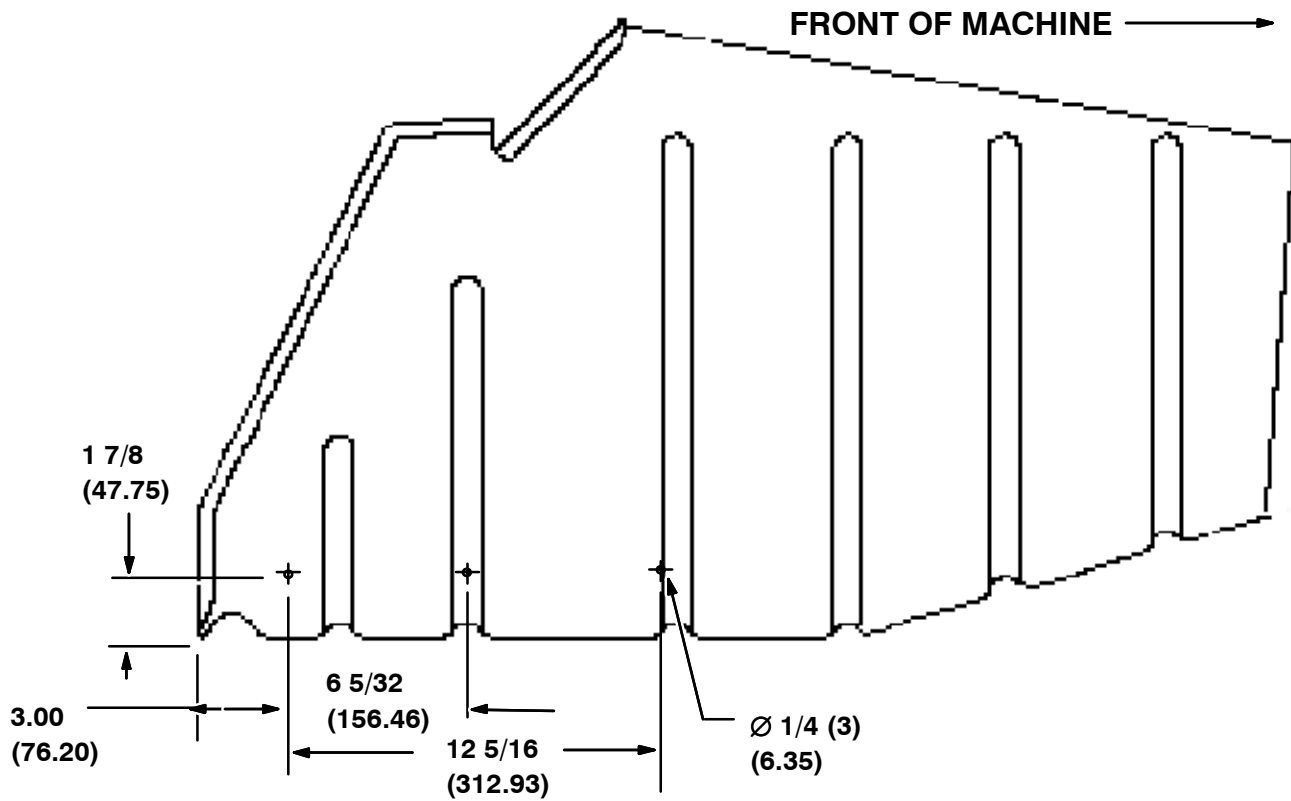


FIG. 1 – HOLE LOCATIONS IN RIGHT SIDE OF PLASTIC HOPPER

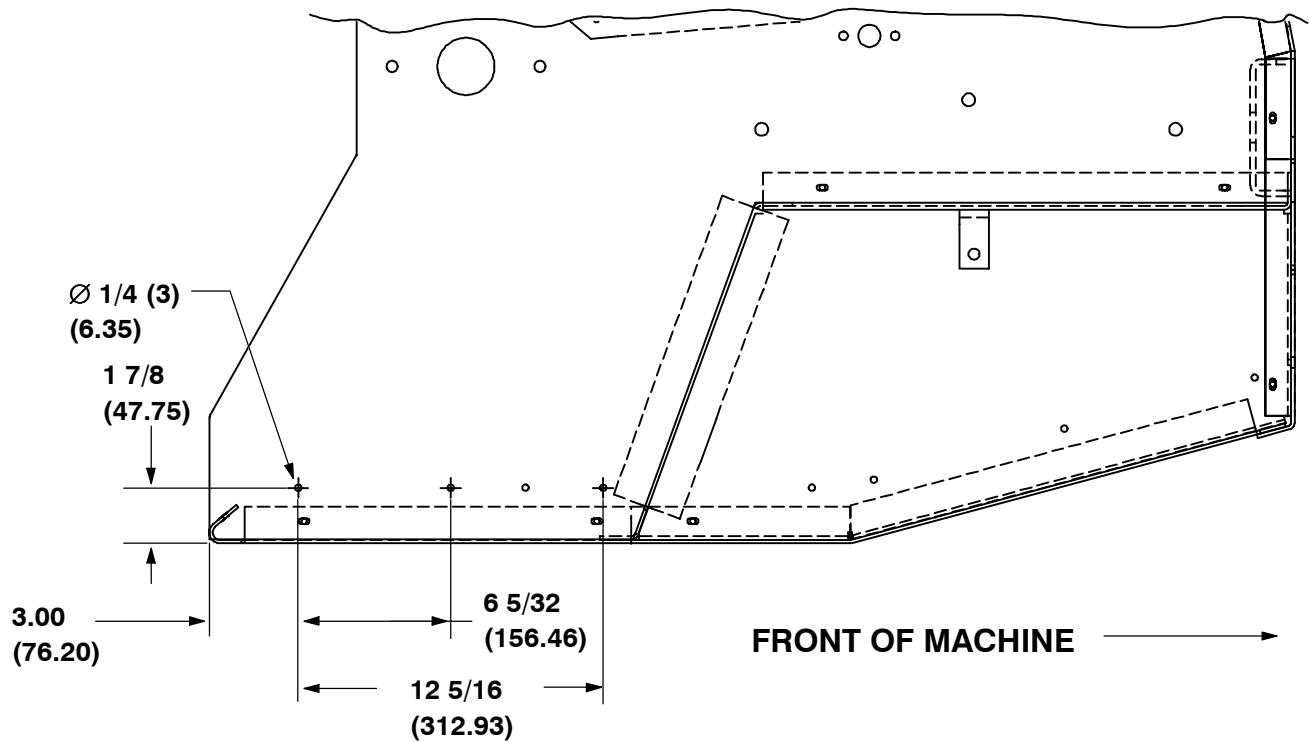
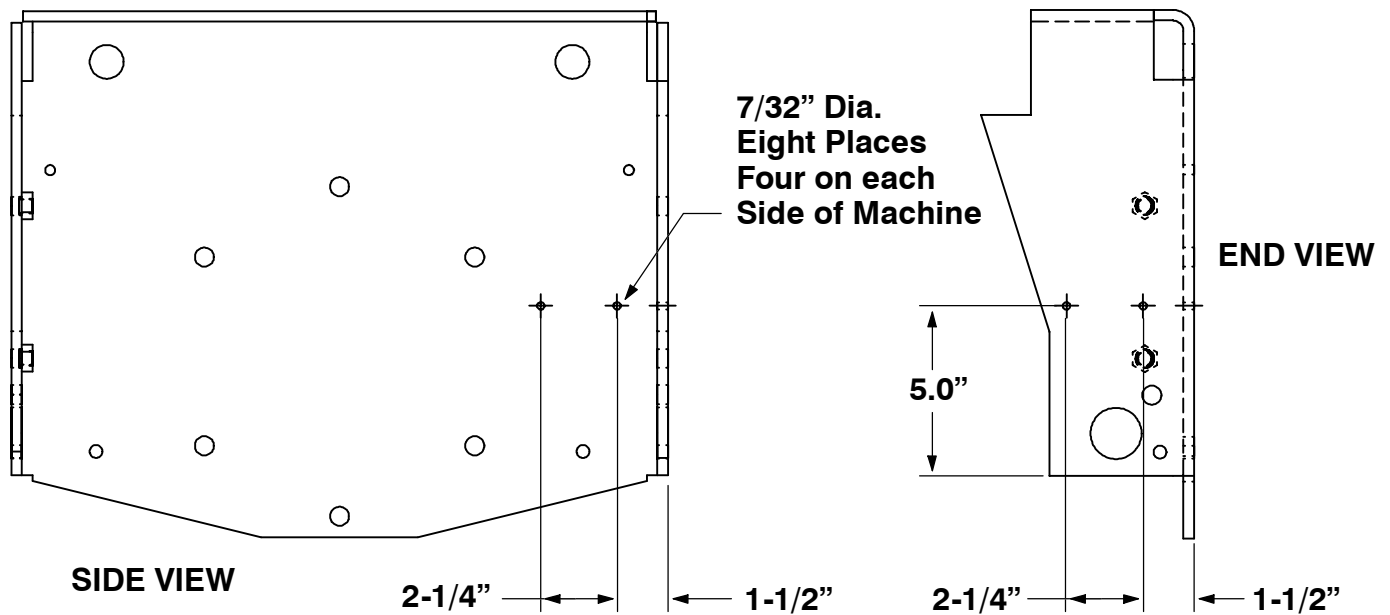
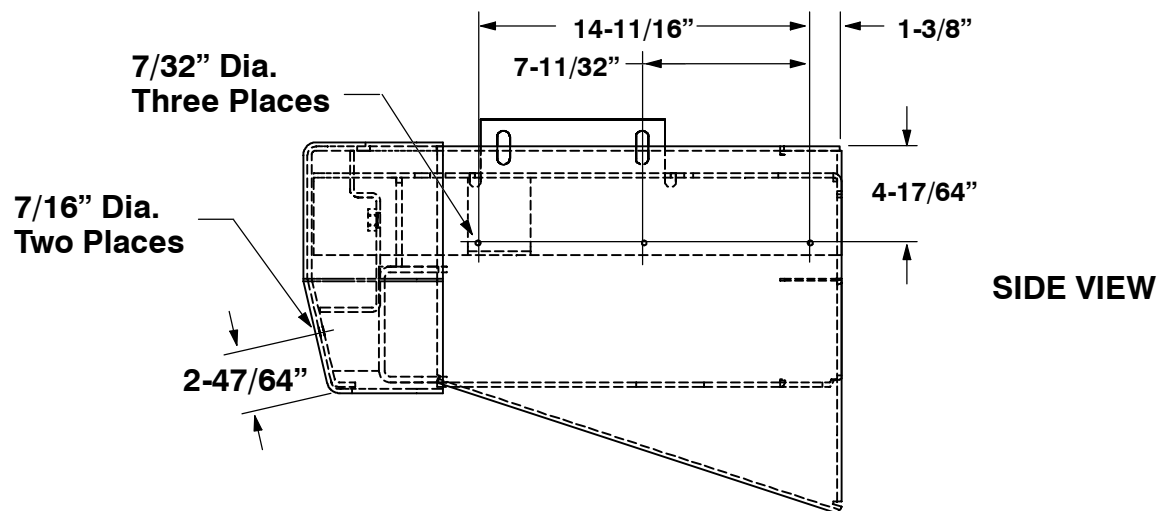


FIG. 2 – HOLE LOCATIONS IN RIGHT SIDE OF STEEL HOPPER



**FIG. 3 – Hole Locations in Wheel Pocket Frame**

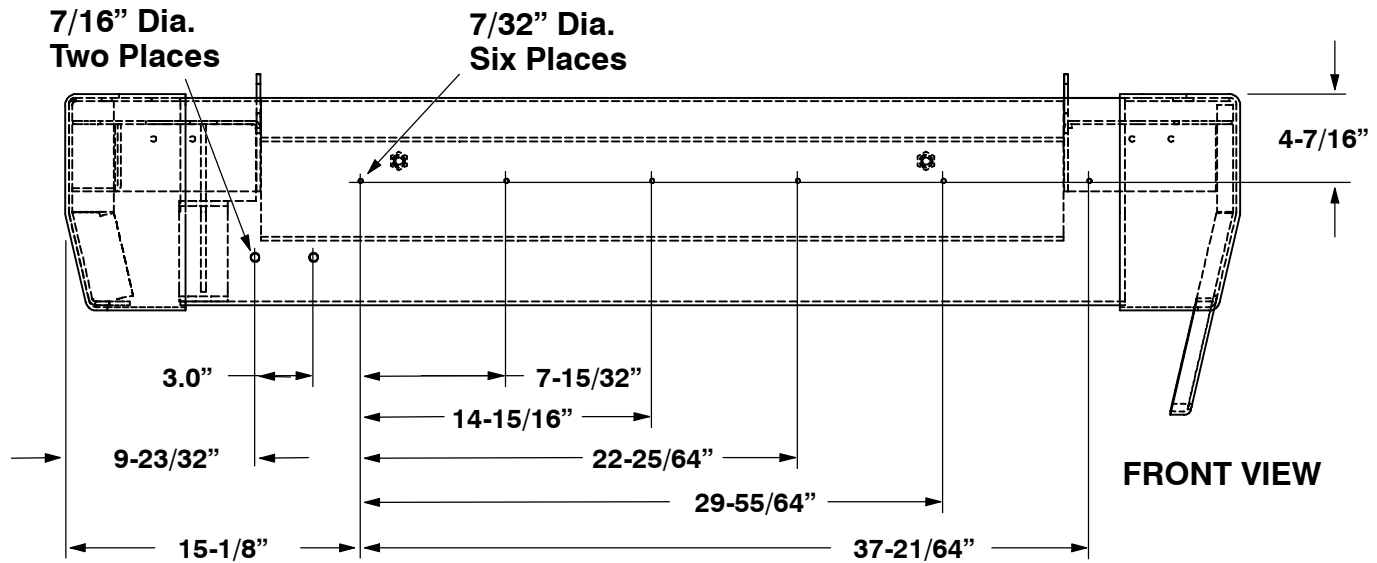
5. Install two wheel pocket skirts (9), (one for each wheel pocket), and two wheel pocket retainer plates (10) on wheel pocket frame with eight hexforming screws (11) and eight flat washers (12). (Refer to Fig. 6)
6. Lower hopper.
7. Drill three 7/32 inch diameter holes in left side of machine. Refer to FIG. 4 for hole locations.



**FIG. 4 – Hole Locations on Left Side of Bumper**

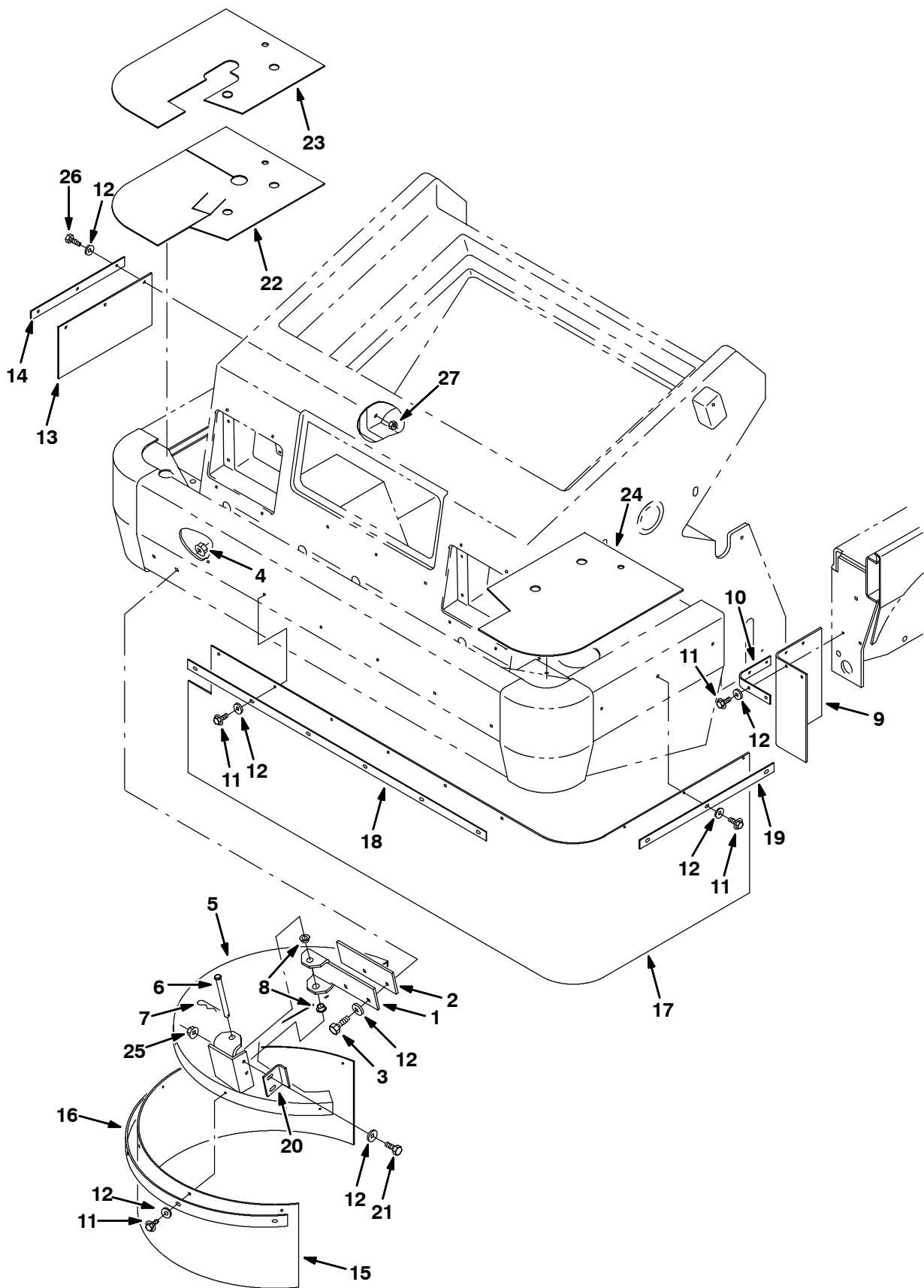
8. Install front skirt (17) and retainer plate (19) on left side of bumper with three hexforming screws (11) and three flat washers (12). (Refer to Fig. 6)
9. Pull front skirt (17) around left corner and across front of bumper. Then position top edge of skirt at the same height as the left side. Mark hole locations using skirt for a template. (Refer to Fig. 6)

10. Drill six 7/32 inch diameter holes in bumper. Refer to FIG. 5 for hole locations.



**FIG. 5 – Hole Locations on Front Bumper**

11. Install front skirt (17) on front of bumper with retainer plate (18) six hexforming screws (11) and six flat washers (12). (Refer to Fig. 6)
12. Drill two 7/16 inch diameter holes in bumper. Refer to FIG. 5 for hole locations.
13. Install bracket (1) on right side of front bumper with two hex screws (3), spacer plate (2), and two hex nuts (4). (Refer to Fig. 6)
14. Install side brush assembly on machine.
15. Install stop angle (20) on cover (5) with two hex screws (21) and two flat washers (12). Do not tighten hardware until cover assembly is installed on machine. (Refer to Fig. 6)
16. Install cover skirt (15) and retainer (16) on cover (5) with three hexforming screws (11) and three flat washers (12). (Refer to Fig. 6)
17. Install two flange bushings (8) on bracket (1). Then install cover assembly on bracket, threading clevis pin (6) through bracket and flange bushings. Hold clevis pin in place with cotter pin (7). (Refer to Fig. 6)
18. Install flap from front skirt (17) and remaining hole in cover skirt (15) with one hexforming screw (11) and one flat washer (12). (Refer to Fig. 6)
19. Install right and left foam pieces (22 or 23, 24) on sides of hopper. (Refer to Fig. 6)
20. Torque all hexforming screws (11) for mounting skirts 7 – 10 ft lb. (Refer to Fig. 6)



**FIG. 6 - Side Brush Dust Control Kit**

# BILL OF MATERIALS FOR SIDE BRUSH DUST CONTROL KIT 377144

Ref.	Tennant Part No.	Machine Serial Number	Description	Qty.
▽	377144	(000000-	) Kit, Ci, Sbdc, [6600/6650]	1
▲ 1	74383	(000000-	) Bracket, Sbdc	1
▲ 2	379810	(000000-	) Plate, Spacer	2
▲ 3	39284	(000000-	) Screw, Hex, M10 X 1.5 X 35, 8.8	2
▲ 4	07792	(000000-	) Nut, Hex, Flng, M10 X 1.5	2
▲ 5	379797	(000000-	) Cover Wldt, Brush, Sbdc	1
▲ 6	51538	(000000-	) Pin, Clevis, 0.50 D X 5.00l	1
▲ 7	44906	(000000-	) Pin, Hair Cotter, 0.69 D .092 Wir	1
▲ 8	23274	(000000-	) Bushing, Flng, 0.50b 0.62d 0.40l	2
▲ 9	66176	(000000-	) Skirt	2
▲ 10	66177	(000000-	) Plate, Retainer	2
▲ 11	12459	(000000-	) Screw, Hex, M 6 X 1.0 X 20, Fmg	21
▲ 12	01684	(000000-	) Washer, Flat, 0.25 Ss	27
▲ 13	379800	(000000-	) Skirt	1
▲ 14	379801	(000000-	) Plate, Retainer	1
▲ 15	379804	(000000-	) Skirt	1
▲ 16	379803	(000000-	) Plate, Retainer	1
▲ 17	379805	(000000-	) Skirt, Front	1
▲ 18	74380	(000000-	) Retainer, Skirt, Front, Sbdc	1
▲ 19	74381	(000000-	) Retainer, Skirt, Sbdc, Lh	1
▲ 20	74382	(000000-	) Angle, Stop	1
▲ 21	16931	(000000-	) Screw, Hex, M 8 X 1.25 X 20, 8.8	2
▲ 22	1010301	(000000-	) Seal, Sbdc, Bmpr (6600 Only)	1
▲ 23	1010302	(000000-	) Seal, Sbdc, Bmpr (6650 Only)	1
▲ 24	1010269	(000000-	) Seal, Sbdc, Bmpr	1
▲ 25	07791	(000000-	) Nut, Hex, Flng, M08 X 1.25	2
▲ 26	09007	(000000-	) Screw, Hex, M 6 X 1.0 X 25, Ss	3
▲ 27	08712	(000000-	) Nut, Hex, Lock, M 6 X 1.0, NI, Ss	3

TENNANT COMPANY  
P. O. Box 1452  
Minneapolis, MN 55440-1452