



# INSTRUCTION BULLETIN

No. 340645  
Machine: 6600/6650  
Published: 09-2004  
Rev. 00

**NOTE: DO NOT DISCARD the Parts List from the Instruction Bulletin. Place the Parts List in the appropriate place in the machine manual for future reference. Retaining the Parts List will make it easier to reorder individual parts and will save the cost of ordering an entire kit.**

*NOTE: Numbers in parenthesis ( ) are reference numbers for parts listed in Bill of Materials.*

Installation instructions for **kit number 377021**

## SYNOPSIS / PROBLEM:

This kit contains the parts needed to install the cab kit on the 6600/6650 model sweepers.  
Please follow step-by-step instructions.

## SPECIAL TOOLS / CONSIDERATIONS: NONE

(Estimated time to complete: 6 hours)

## PREPARATION:

1. Park the machine on a clean level surface.
2. Turn off machine, remove key, and set parking brake.

**FOR SAFETY: Before leaving or servicing machine, stop on level surface, set parking brake, turn off machine, and remove key.**

3. Disconnect the battery cables from the machine.



**WARNING: Always disconnect battery cables from machine before working on electrical components.**

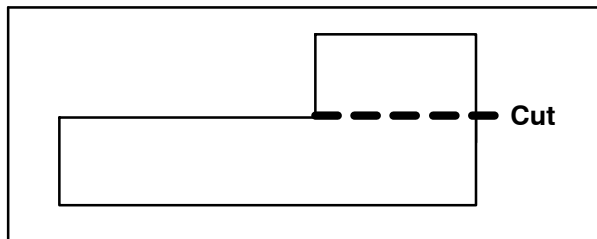
## CAB INSTALLATION:

1. Remove the existing arm rest from the right side of the seat and move seat forward on the seat support. Discard the armrest.
2. Install seal (23) on the right rear corner of the seal plate (18).
3. Use two screws (21), two washers (20), and two nuts (19) to install the seal plate (18) onto the seat support. Torque nuts (19) 16–20 ft. lbs. Refer to Fig. 4.

4. Use four hex screws (13), one flat screw (48), four flat washers (20), and five hex nuts (14) to install the door jam angle (4), the two rear door jams (47), and the door stop sleeve (16) onto the machine lintel. Refer to Fig. 5.
5. Use existing hardware to install the lower rear door jamb panel (5) between the seat support and corner post of machine. Refer to Fig. 4.
6. Place a 2x4 board through each side window and door opening of the cab assembly (1), attach a hoist chain to the 2x4 boards, and hoist the assembly over the machine.
7. Install a rubber grommet (22) into hole on lintel, above the side instrument panel. Refer to Fig. 4.
8. Route the cab harness through the rubber grommet (22) installed in the previous step, under the lintel, out the same hole as the steering hoses, and along the main harness to the circuit breakers. Refer to Fig. 4.
9. Connect the cab harness to the machine main harness. Tie off unused wires. Refer to Fig. 6 and Fig. 7.
10. Lower the cab assembly (1) onto the machine.
11. Use three hex screws (3), two hex nuts (10), five flat washers (2), three nuts (9), and the bolt latch bracket (7) to secure the cab (1) to the machine. Torque hex screws (3) and (10) 50–60 ft. lbs. Refer to Fig. 4 and Fig. 5.

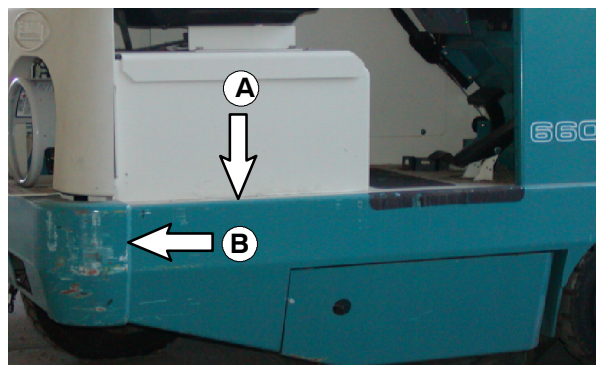
**NOTE:** Install longer hex screws (10) into the lower rear door jam panel (7).

12. Cut the rear cab seal (11) into two pieces. Refer to Fig. 1.



**FIG. 1-NTS**

13. Install the smaller piece of rear cab seal (11) on the rear corner channel, directly below the lower rear door jam panel (7) mounting hardware. Refer to Fig. 4.
14. Install the larger piece of rear cab seal (11) on the left side of the rear corner seat support channel. Refer to Fig. 4.
15. Use hex nut (8) and a flat washer (2) to install the latch bolt (6) onto the bolt latch bracket (7). Torque hex nut (8) 45-55 ft. lbs. Refer to Fig. 5.
16. Use four flat screws (13) to attach the short pin cab hinge (24) and the long pin cab hinge (12) onto the door assembly (15). Refer to Fig. 5.
17. Hang the door assembly (15) onto the cab assembly (1), insert a clevis pin (17) through the door hinge and the door step sleeve (16), and secure the clevis pin with a cotter pin (49). Refer to Fig. 4.
18. Adjust the door assembly (15) on the cab assembly (1).
19. Align the top edge of the door bumper (30) with the top of the machine frame (A) and one end of the door bumper up against the seam in the frame (B). Refer to Fig. 2.

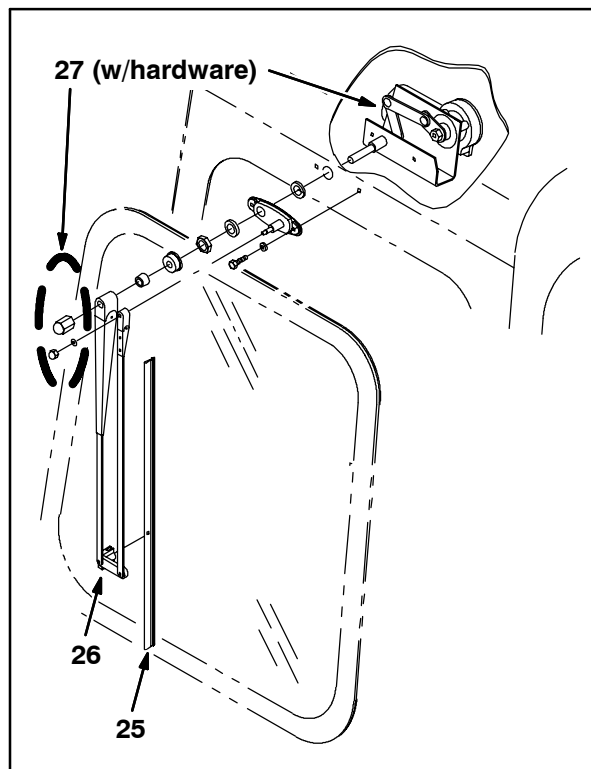


**FIG. 2**

20. Hold the door bumper (30) into place on the machine and drill a 9/32" through each of the existing holes in the door bumper and into the side of the machine.

21. Use three forming hex screws (31) to attach the door bumper (30) to the machine.

22. Install the windshield wiper blade (25) onto the windshield wiper arm (26). Refer to Fig. 3.



**FIG. 3**

23. Use the hardware included with the wiper motor (27) to mount the windshield wiper arm (26) onto the wiper motor. Refer to Fig. 3.
24. If necessary, adjust the wiper assembly (26) so the blade (25) remains on the window throughout the entire range of motion when the wiper is operating. Reposition the wiper assembly on the wiper motor (27) to make adjustments.
25. Use two hex screws (46) to mount the rear view mirror bracket (28) onto the cab. Refer to Fig. 4.
26. Use the hardware included with the mirror (29) to mount the mirror to the rear view mirror bracket (28). Refer to Fig. 4.

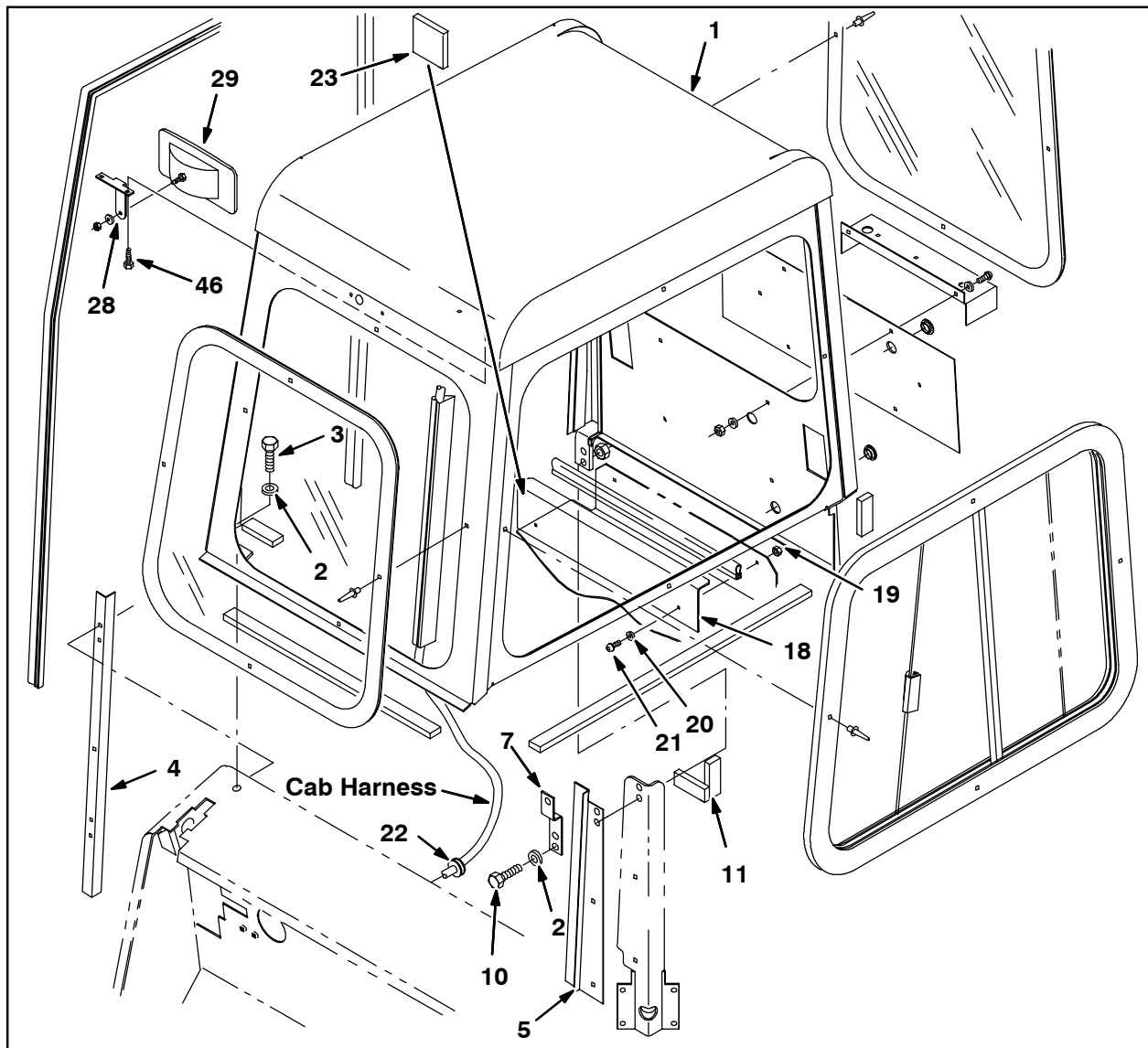


FIG. 4

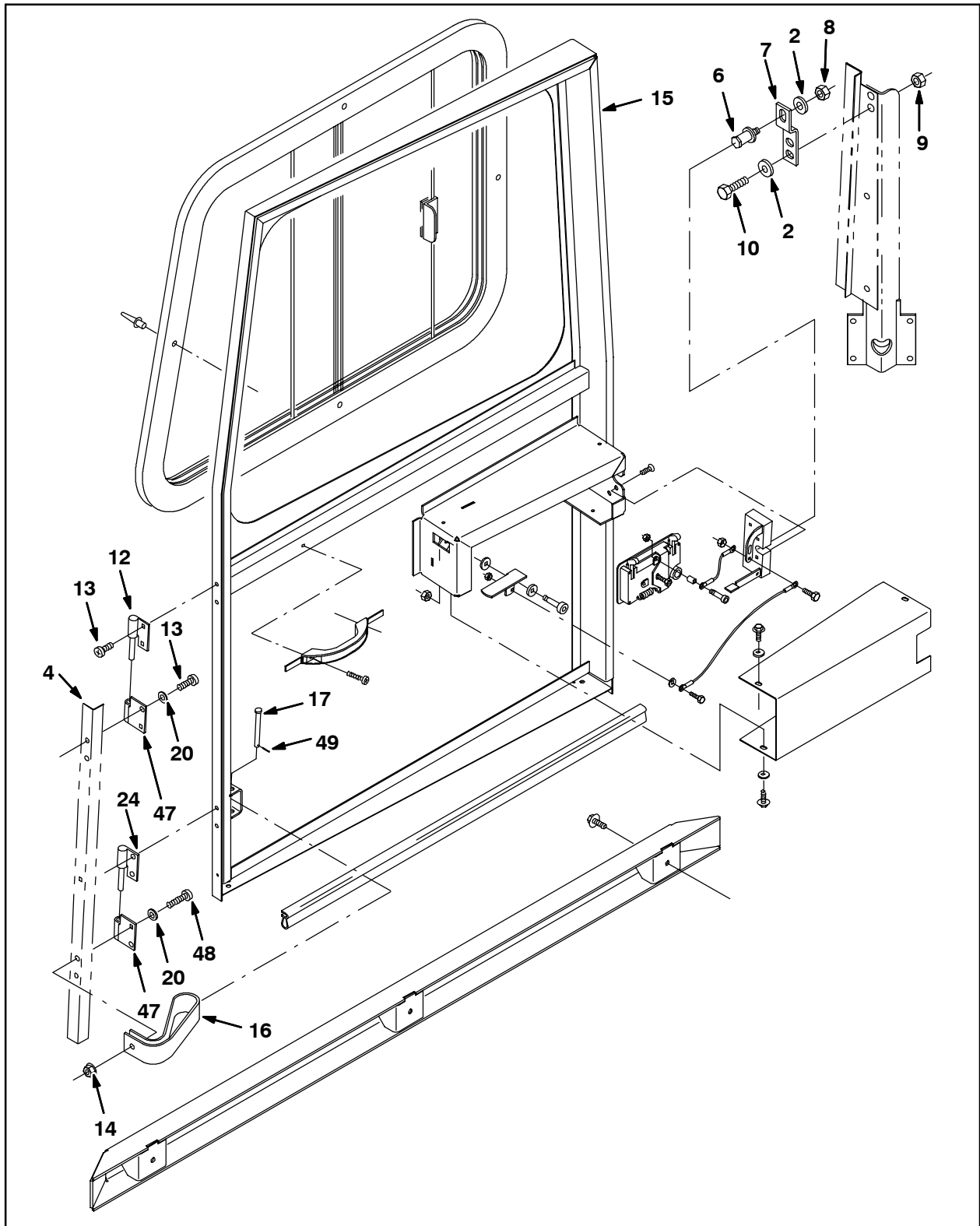


FIG. 5

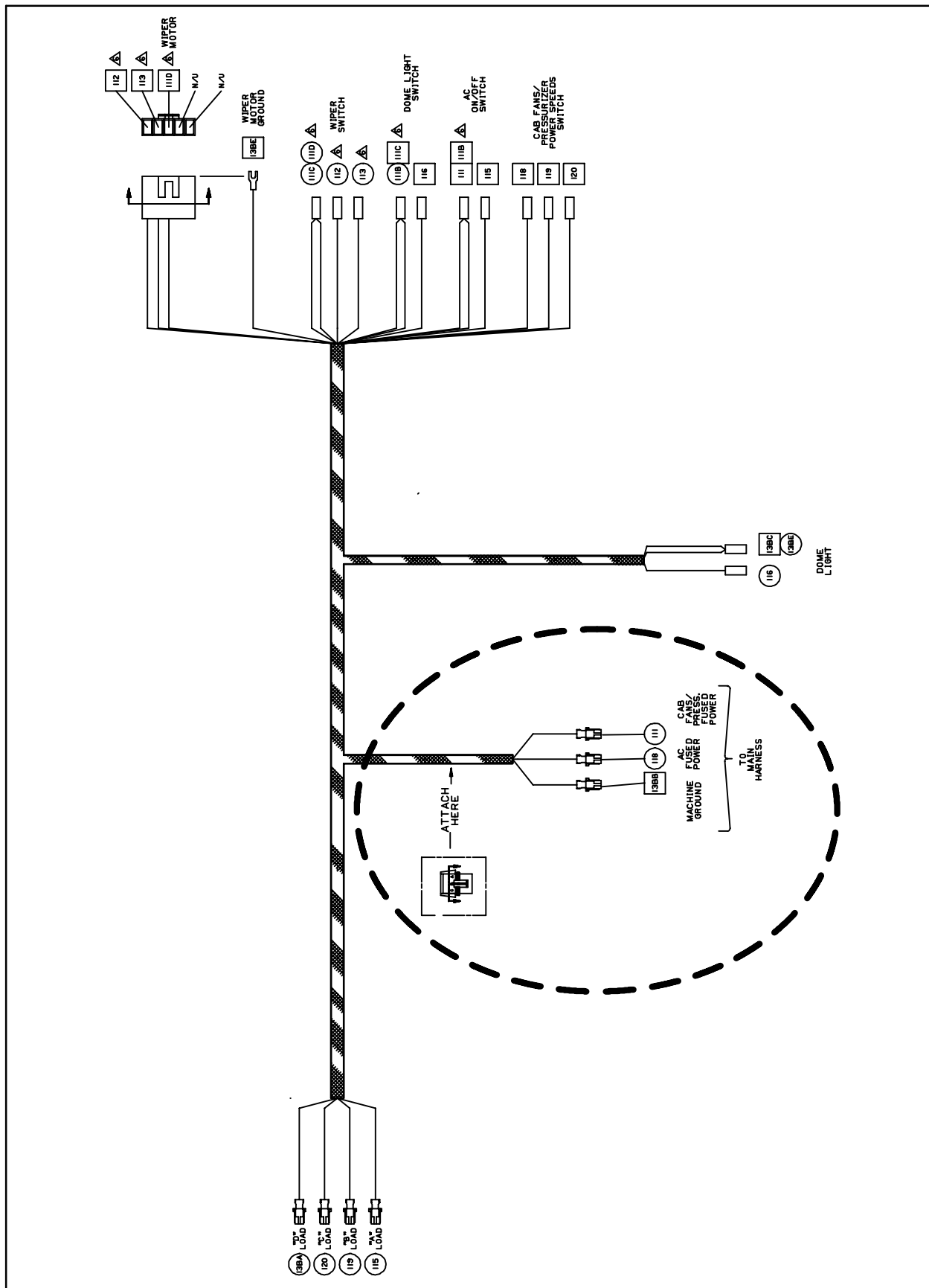


FIG. 6

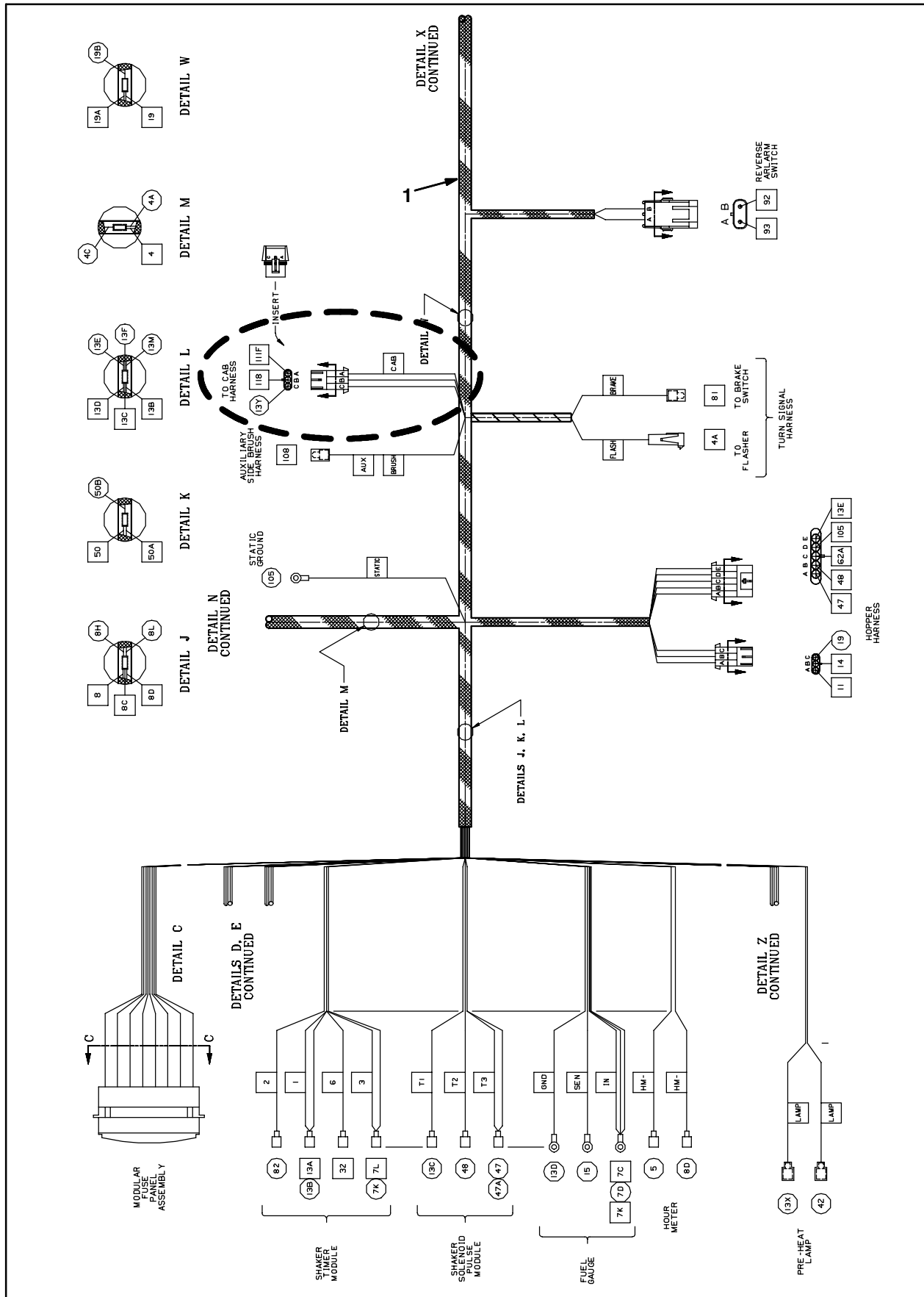


FIG. 7

## DUST SKIRT INSTALLATION:

### PREPARATION:

1. Park the machine on a clean level surface.
2. Raise the hopper, engage the hopper support bar, and lower hopper onto the support.



**WARNING: Raised hopper may fall. Engage the hopper support bar.**

3. Turn off machine, remove key, and set parking brake.

**FOR SAFETY: Before leaving or servicing machine, stop on level surface, set parking brake, turn off machine, and remove key.**

4. Disconnect the battery cables from the machine.



**WARNING: Always disconnect battery cables from machine before working on electrical components.**

5. Use a high pressure sprayer to clean the area around the machine lintel, front wall, and steel front panel. Use mineral spirits or paint thinner to clean any oil or grease residue from this area.

### SKIRT INSTALLATION:

*NOTE: Refer to Fig. 10 for locations of items installed in Step 1 through Step 14.*

1. Remove the hopper support bar and lower the hopper.
2. Install strip (33) onto the machine.
3. Raise the hopper, engage the hopper support bar, and lower hopper onto the support.

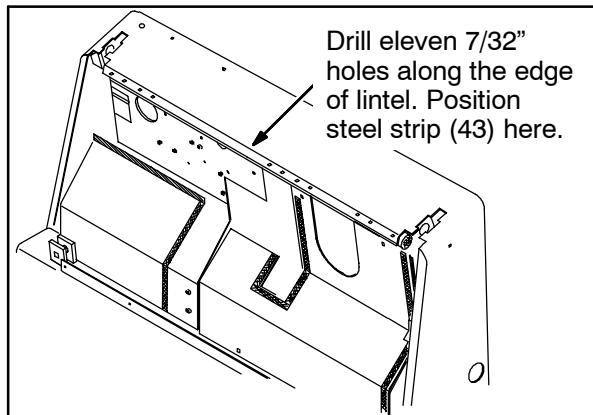


**WARNING: Raised hopper may fall. Engage the hopper support bar.**

4. Install the rest of the strips (34), (35), (36), (37), (38), (39), and (41) onto the machine.
5. Install the round seals (42) up under the lintel lip near the engine side lift arm pin.

6. Allow the adhesive on the strips to cure for 24 hours before installing the dust skirt.
7. Place the dust skirt (32) onto the machine and align the strips on the machine with the strips on the dust skirt. First align the hopper lift cylinder with the center slot in the skirt. Work the skirt out toward both sides of the machine and then downward. Firmly push the strips together. Ensure the hopper switch protrudes through the small hole in the right side of the skirt.
8. Fold the bottom of the dust skirt (32) under the plastic rivets near the hopper skirt.
9. Route the wire harness routed from the machine to the hopper through the lift cylinder slit in the dust skirt (32).
10. Route both the large and the small vacuum hoses through the large round opening in the dust skirt (32).
11. Tuck both outside edges of the dust skirt (32) to the inside of the lift arm towers. This prevents the dust skirt from getting in the way when the lift arms are lowered.
12. Disengage the hopper support bar and lower the hopper. Be sure the dust skirt (32) does not get pulled or pinched by the hopper. The dust skirt should be in place along the strip on the front edge of the lintel.
13. Position the steel strip (43) across the front of the lintel and over the top of the dust skirt (32) and strip (33). The curve of the steel strip (43) should match the curve of the lintel. Center the steel strip (43) on the lintel. The steel strip should not hang over either side of the lintel. Refer to Fig. 8 and Fig. 10.
14. Align the holes in the steel strip (43) with the holes in the dust skirt (32). If necessary, adjust the dust skirt to align the holes.

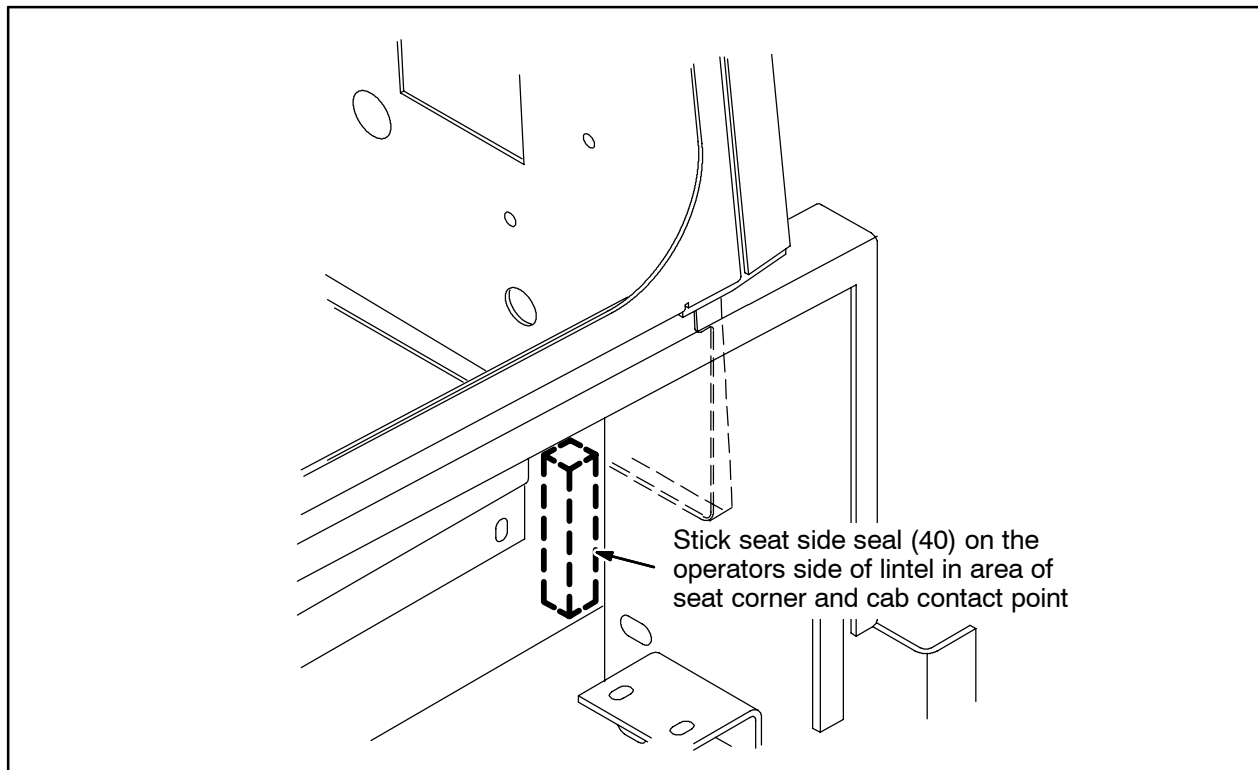
15. Mark and drill eleven mount holes. Use a 7/32" drill bit only. Any other size hole could damage the hex screws (44) installed in the next step. Refer to Fig. 8.



**FIG. 8**

16. Use eleven washers (45) and screws (44) to secure the dust skirt (32) and steel strip (43) onto the machine. Tighten the screws (44) until the dust skirt just starts to deform. Refer to Fig. 10.

17. Lift the operators seat and install the seat side seal (40). Refer to Fig. 9.



**FIG. 9**



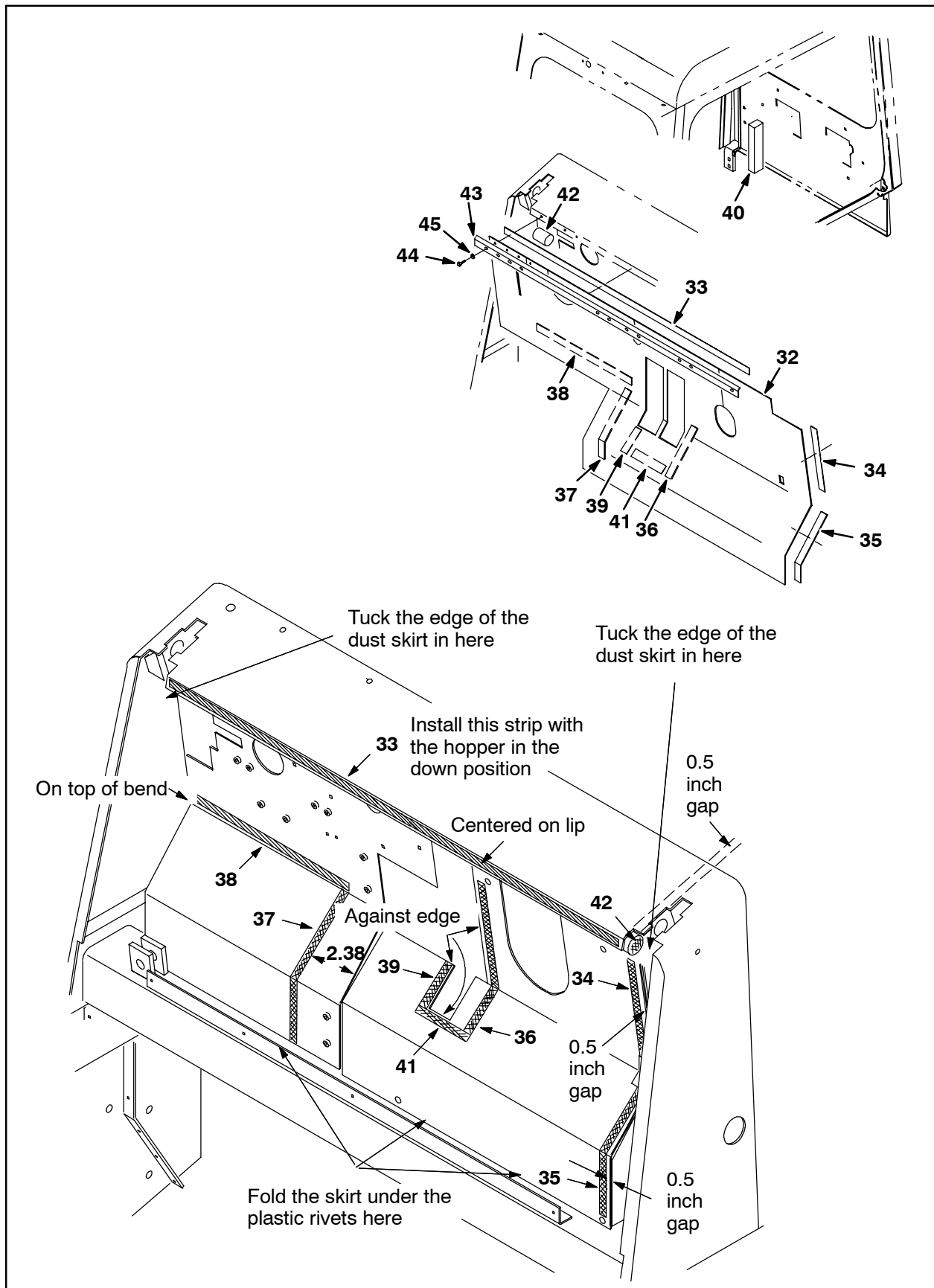


FIG. 10

**Bill of Materials for Kit, Cl, Cab, [6600/6650]-(377021)**

Ref.	Tennant Part No.	Description	Qty.
▽	377021	Kit, Cl,Cab [6600/6650]	1
▲	1 370143	Cab	1
▲	2 32493	Washer, Flat, 0.50 Std	6
▲	3 06968	Screw, Hex, M12 X 1.75 X 35, 8.8	3
▲	4 56546	Angle, Mtg, Stl, .06 1.0 1.0 28.5L	1
▲	5 56560	Panel, Jam, Door, Rear, Lower	1
▲	6 58898	Bolt, Latch, F/58549/58844	1
▲	7 1009892	Bracket, Latch, Bolt	1
▲	8 43955	Nut Hex, Std, .44-14, 5	1
▲	9 08711	Nut, Hex, Lock, M12 X 1.75, NL	3
▲	10 06969	Nut, Hex, Lock, M12 X 1.75 X 40, 8.8	2
▲	11 374621	Seal, Cab, Rear	1
▲	12 374653	Hinge Wldt, Door, Cab, Pin, Long	1
▲	13 07810	Screw, Flt, M8 X 1.25 X 25, 10.9	7
▲	14 07791	Nut, Hex, Flng, M8 X 1.25	5
▲	15 1005339	Door, Wldt, Cab	1
▲	16 60862	Sleeve, Nyl, 13 14.7L W/Holes	1
▲	17 02126	Pin, Clevis, 0.37 D X 3.00L	1
▲	18 55227	Plate, Seal	1
▲	19 08709	Nut, Hex, Lock, M8 X 1.25, NL	2
▲	20 39349	Washer, Flat, 0.31 SAE	6
▲	21 17284	Screw, Btn, M8 X 1.25 X 16, SS	2
▲	22 56187	Grommet, Rbr, 0.50ID, F/ 1.1H, .25Mtl	1
▲	23 374621	Seal, Cab, Rear	1
▲	24 374654	Hinge Wldt, Door, Cab, Pin, Short	1
▲	25 74433	Blade, Wiper, Windshield 18.0	1
▲	26 59799	Arm, Wiper, Windshield, [Panto]	1
▲	27 59803	Motor, Ele, Wiper, 12VDC 68Deg	1
▲	28 49032	Bracket, Mtg, Mirror, Rearview	1
▲	29 49034	Mirror, Convex, 06.7 X 06.2	1
▲	30 1010170	Bumper, Eldt, Door, Cab	1
▲	31 763051	Screw, Hex, M8 X 1.25 X 25, Fmg	3
▲	32 370116	Skirt, Firewall, RH	1
▲	33 370117	Fastener, [Hook & Loop], 45.00L	1
▲	34 370118	Fastener, [Hook & Loop], 09.75L	1
▲	35 370119	Fastener, [Hook & Loop], 11.00L	1
▲	36 370120	Fastener, [Hook & Loop], 15.00L	1
▲	37 370121	Fastener, [Hook & Loop], 12.00L	1
▲	38 370122	Fastener, [Hook & Loop], 16.50L	1
▲	39 370129	Fastener, [Hook & Loop], 03.25L	1
▲	40 370124	Insulation, Acstc, 1.0 X 6.8 X 3.0	1
▲	41 370130	Fastener, [Hook & Loop], 5.19L	1
▲	42 370125	Seal, Rbr, Clsd, 1,50D 39.9L	2
▲	43 370159	Strip, Steel	1
▲	44 12459	Screw, Hex, M6 X 1.0 X 20, Fmg	11
▲	45 01684	Washer, Flat, 0.25 SS	11
▲	46 24593	Screw, Hex, .25-20 X 0.50, Fmg	2
▲	47 374651	Hinge Wldt, Tube, .38b, Door, Cab	2
▲	48 33943	Screw, Flt, M08 X 1.25 X 40, 10.9	1
▲	49 39005	Pin, Cotter, .094 X 0.75	1

NOTE: Refer to parts manual for a complete parts list. Parts listed above are only those used to install kit onto machine.

TENNANT COMPANY  
P. O. Box 1452  
Minneapolis, MN 55440-1452