



INSTRUCTION BULLETIN

No. 340622
Machine: EZ Rider HP, 7080
Published: 2-03
Rev. 00

NOTE: DO NOT DISCARD the Parts List from the Instruction Bulletin. Place the Parts List in the appropriate place in your machine manual for future reference. Retaining the Parts List will make it easier to reorder individual parts and will save you the cost of ordering an entire kit.

NOTE: Numbers in parenthesis () are reference numbers for parts listed in Bill of Materials.

Installation instructions for **kit number 393164 and 393165**

DESCRIPTION:

This kit contains the parts needed to replace a 700MM or 800MM disc scrub head on the model EZRider HP™ and 7080 scrubbers.

Please follow step-by-step instructions.

SPECIAL TOOLS / CONSIDERATIONS:

(Estimated time to complete: 2 hours)

PREPARATION:

(Refer to FIG. 1 thru 4)

FOR SAFETY: Before leaving or servicing machine, stop on level surface and set parking brake. Then turn off machine and remove key.

1. Check that the solution tank on the machine is empty.
2. Turn the machine power on. Press the scrub switch to lower the scrub head. Turn the machine power off when the scrub head is lowered to the floor.
3. Disconnect the scrub head actuator lift tool from the scrub head. Retain the clevis pin and cotter pin for reassembly. (Refer to FIG. 1 and 2)
4. Turn the machine power on, and raise the lift actuator once it is disconnected.
5. Turn the machine power off when the lift actuator is raised.
6. Disconnect battery cables from machine.



WARNING: Always disconnect battery cables from machine before working on electrical components.

INSTALLATION:

(Refer to FIG. 1, 2 and 3)

1. Disconnect and tie up the stabilizer bars from each side of the scrub head.
2. Locate the lift channel underneath the machine, connecting the scrub head to the machine frame.
3. Remove the front clevis pin from the lift channel, disconnecting the lift channel from the machine frame. Retain the clevis pin, washer and cotter pin for reassembly.
4. Disconnect the solution hose from the plastic tee fitting on the scrub head.
5. Disconnect the scrub brush motors from the main wiring harness.
6. Disconnect the brush link arms from the scrub head.
7. Block the rear tires. Jack up the front of the machine, and carefully slide the scrub head assembly out from underneath the right side of the machine.

FOR SAFETY: When servicing machine, block machine tires before jacking machine up. Jack machine up at designated locations only. Block machine up with the jack stands. Use a jack that will support the weight of the machine.

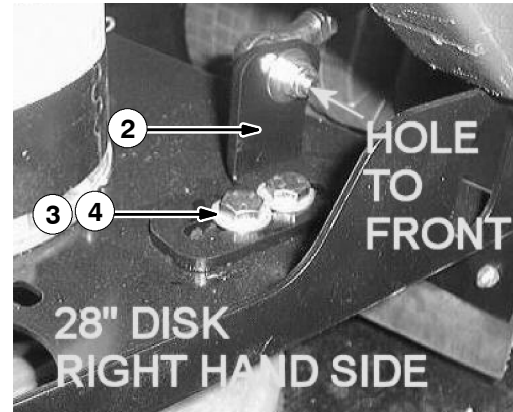
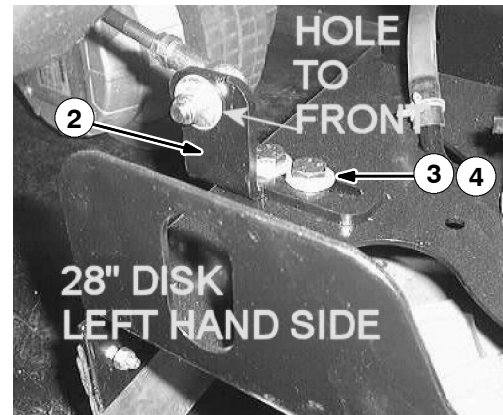
8. Remove the front and rear skirts from the scrub head assembly.
9. Disconnect and remove the wire ties and clamps securing the water lines to the scrub head. Remove and set aside the water lines from the scrub head.
10. Remove and set aside the drive motors and hubs from the scrub head.
11. Remove **lift channel 392904** from the old scrub head, and install **lift channel 392904** on the new weldment with **clevis pin 222196**, **washers 32486** and **hair pin 44906**.

12. 700 mm (28 in) Scrub Head Assy:

Mount the two **scrub head brackets (2)** to the **scrub head weldment (1)** with **hex screws (3)** and **washers (4)**.

NOTE: BOTH BRACKETS HOLES ON THE 28" WELDMENT ARE ORIENTED TOWARDS THE FRONT OF THE MACHINE.

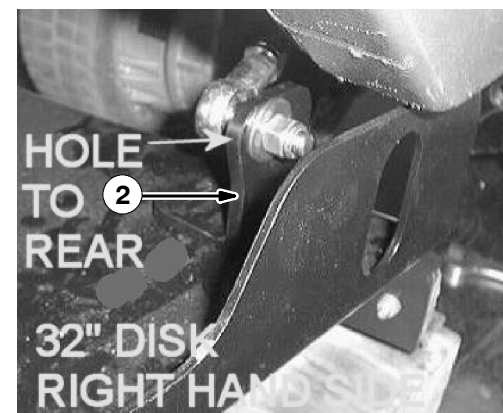
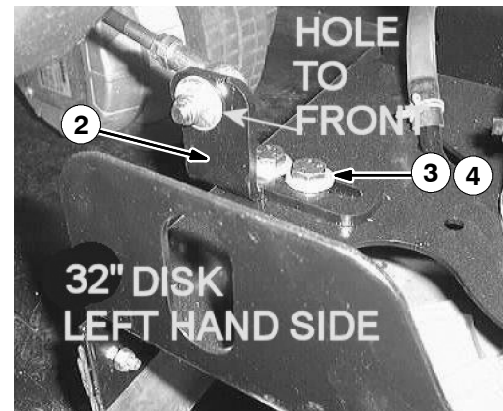
Torque hardware to 35–49 Nm (25–35 ft lbs).



13. 800 mm (32 in) Scrub Head Assy:

Mount the two **scrub head brackets (2)** to the **scrub head weldment (1)** with **hex screws (3)** and **washers (4)**.

NOTE: THE LEFT SIDE BRACKET IS ORIENTED TOWARDS THE FRONT OF THE MACHINE, AND THE RIGHT SIDE BRACKET IS ORIENTED TOWARDS THE REAR OF THE MACHINE ON THE 32" WELDMENT.



14. Mount the motors to the new **weldment (1)** with eight set aside hex screws and washers.

800 mm (32 in) Scrub Head Assy:

Torque the mounting hardware for the 32" disk scrub motors to 35-49 Nm (25-35 ft lbs).



700 mm (28 in) Scrub Head Assy:

Torque the mounting hardware for the 28" disk scrub motors to 10-14 Nm (7-10 ft lbs).

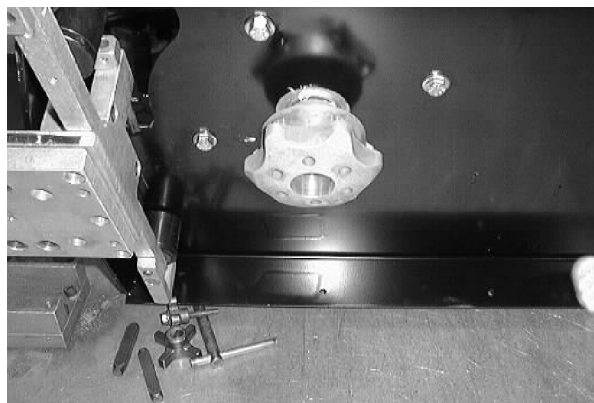


15. **800 mm (32 in) Scrub Head Assy:**

Install the hubs on the 0.80 HP brush motors.
Torque the hubs to 20-28 Nm (15-20 ft lbs).

16. **700 mm (28 in) Scrub Head Assy:**

Install the hubs on the brush motors.
Torque the hubs to 18.5-24 Nm (13-17 ft lbs).



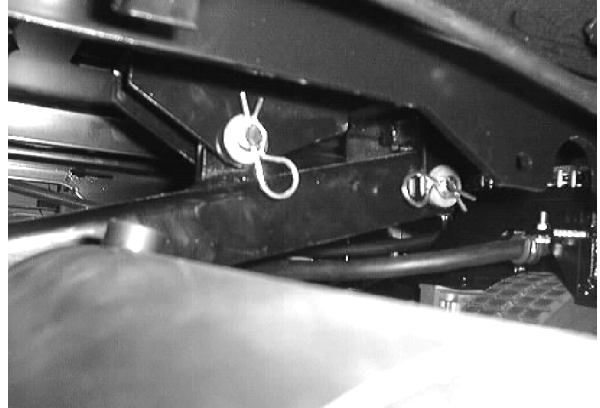
17. Install the set aside water lines with wire clamps and plastic ties.



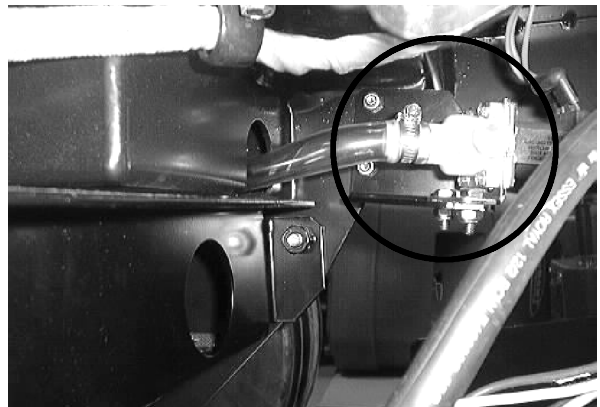
18. Install the front and rear skirts. Only hand tighten at this point.



19. Reposition the scrub head assembly beneath machine. Reconnect **lift channel 392904** to the machine with **clevis pin 222196** and **cotter pin 44906**.



20. Reconnect the water lines to the machine with hose clamps.

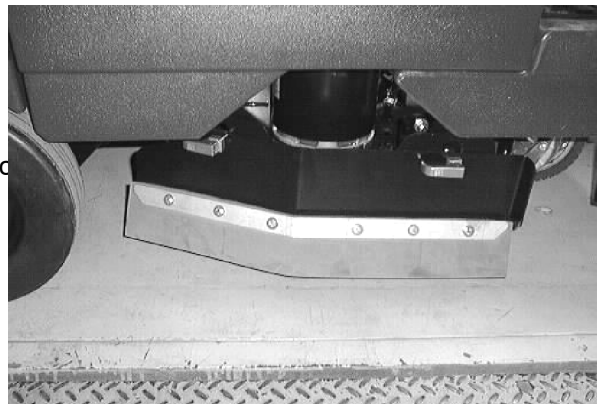


21. Reconnect the link arms to the scrub head.

22. Replace and adjust side squeegees on both sides of the scrub head.

23. Reconnect the batteries to the machine.
Turn the machine power on and lower the lift actuator.

24. Reconnect the scrub head to the lift actuator.
Check the machine for proper operation.



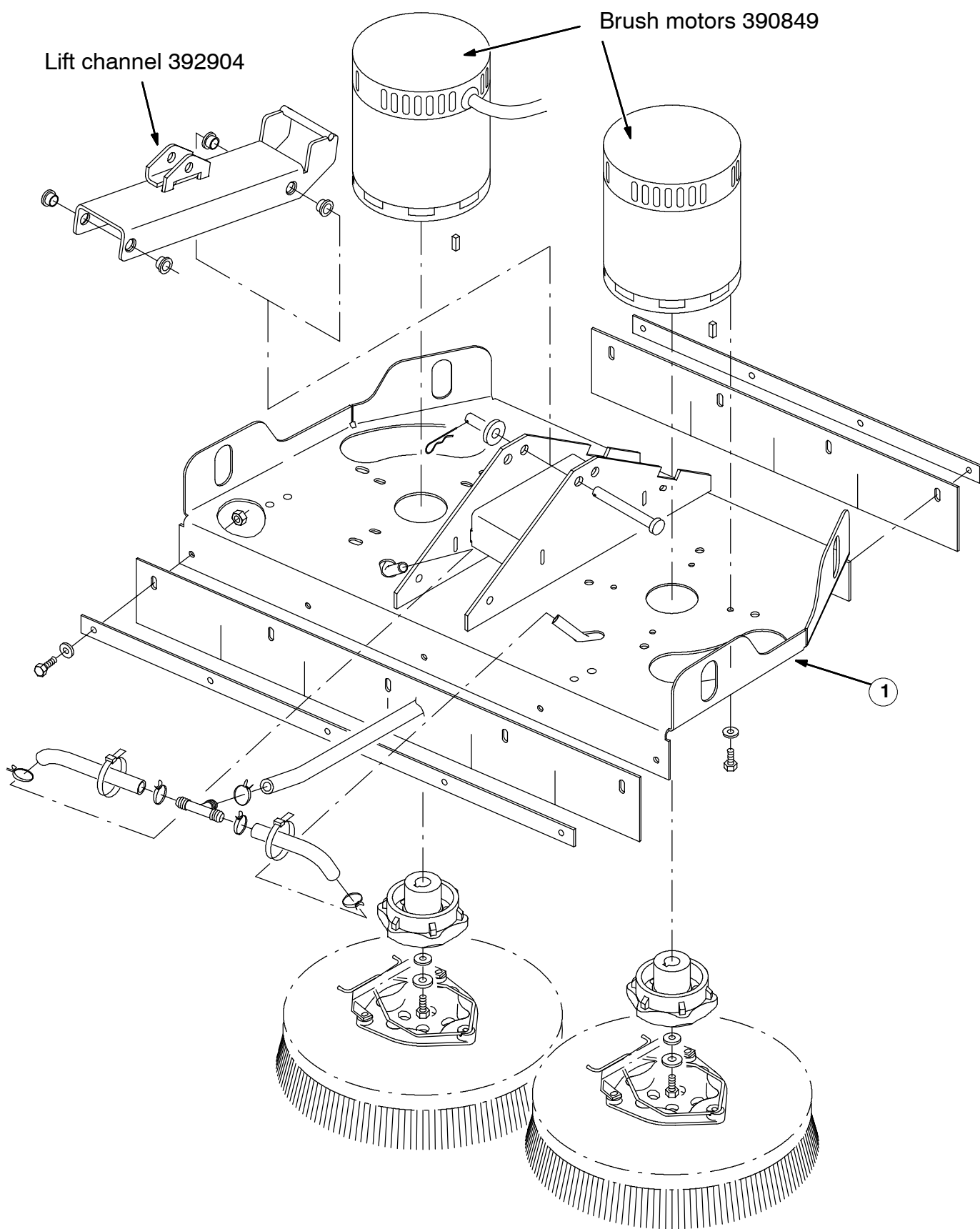


FIG. 1 - Disk Scrub Head Drive Motor Group, 700 mm (28 in)

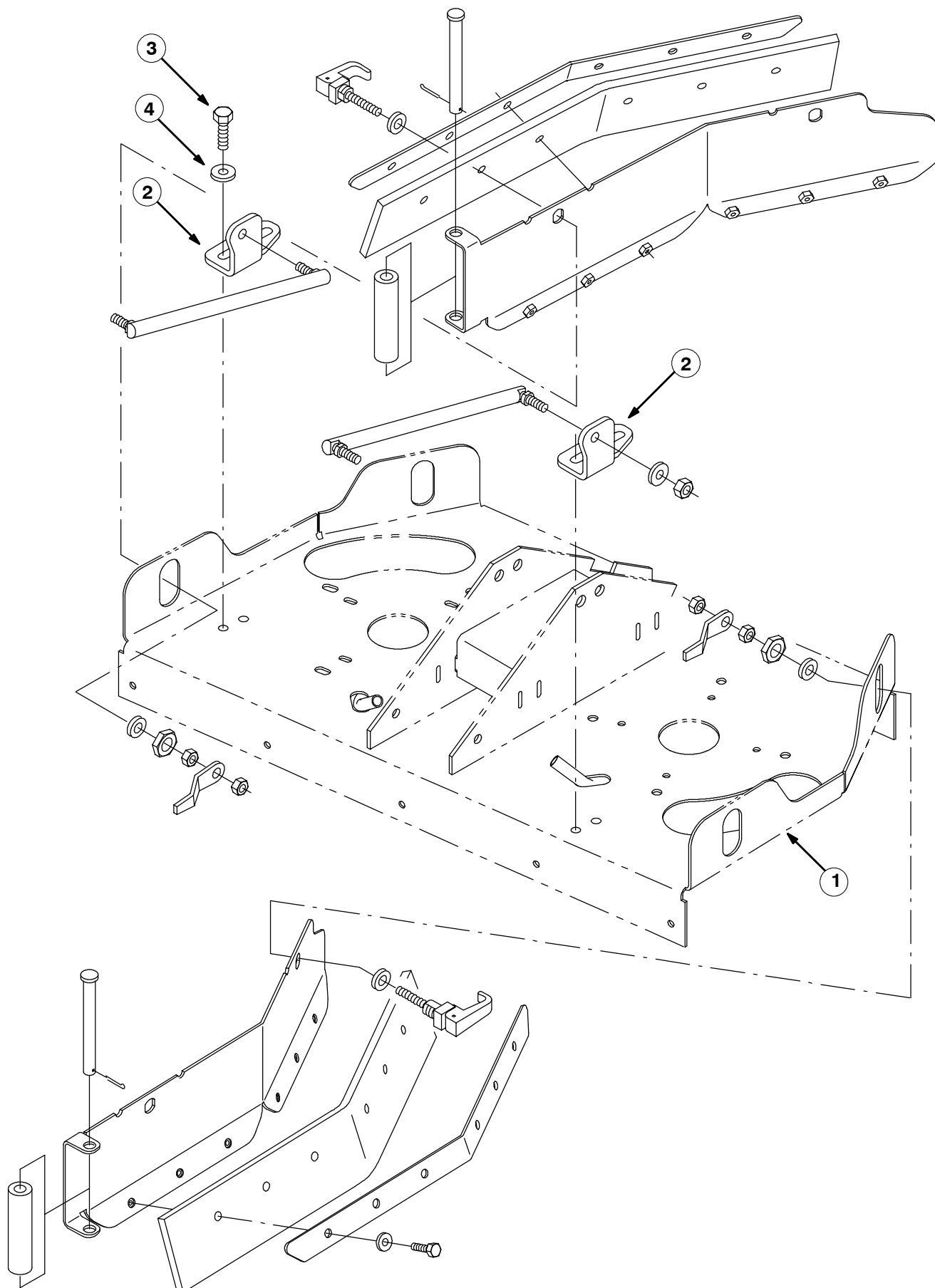


FIG. 2 - Disk Scrub Head Linkage and Squeegee Group 700 mm (28 in)

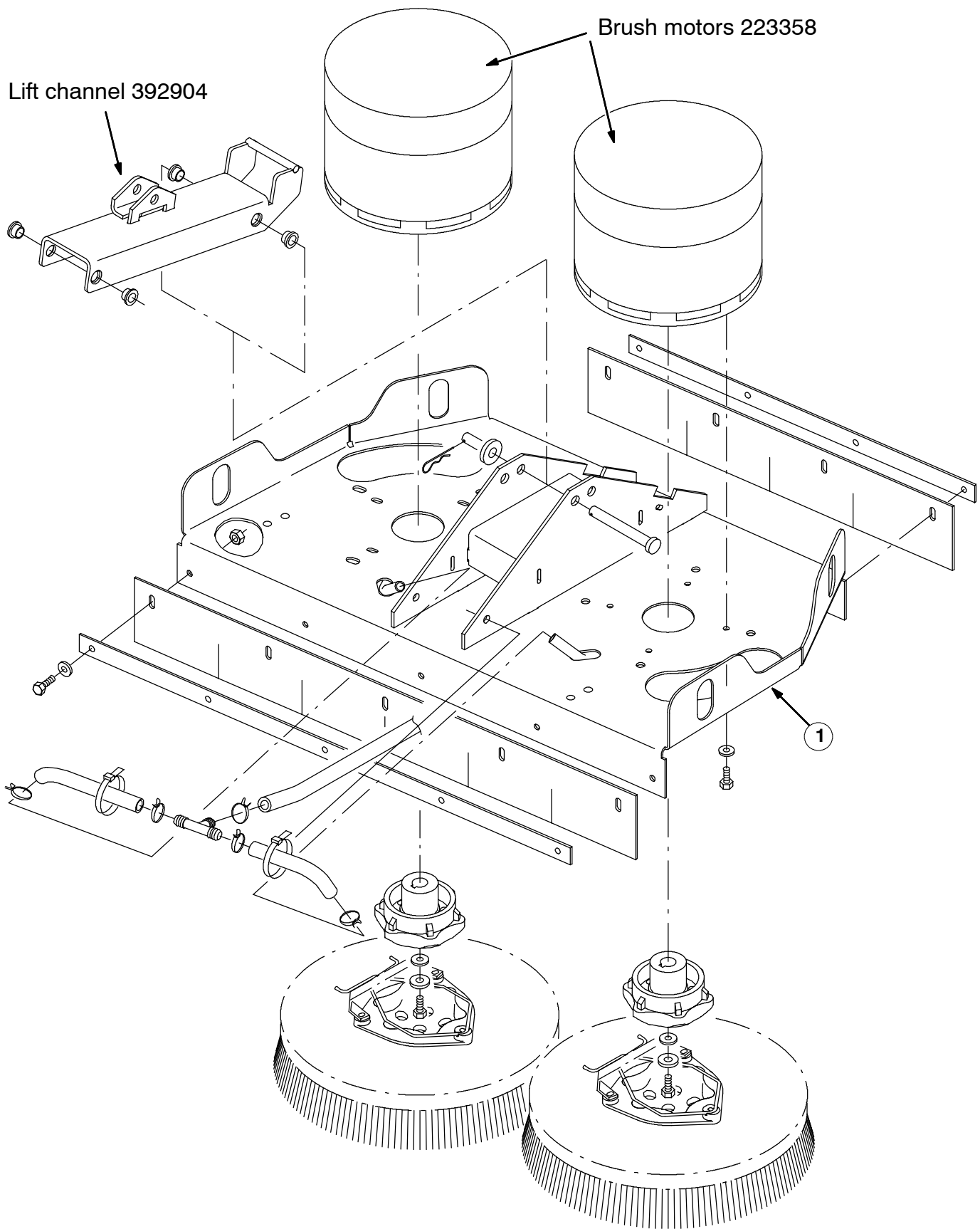


FIG. 3 - Disk Scrub Head Drive Motor Group, 800 mm (32 in)

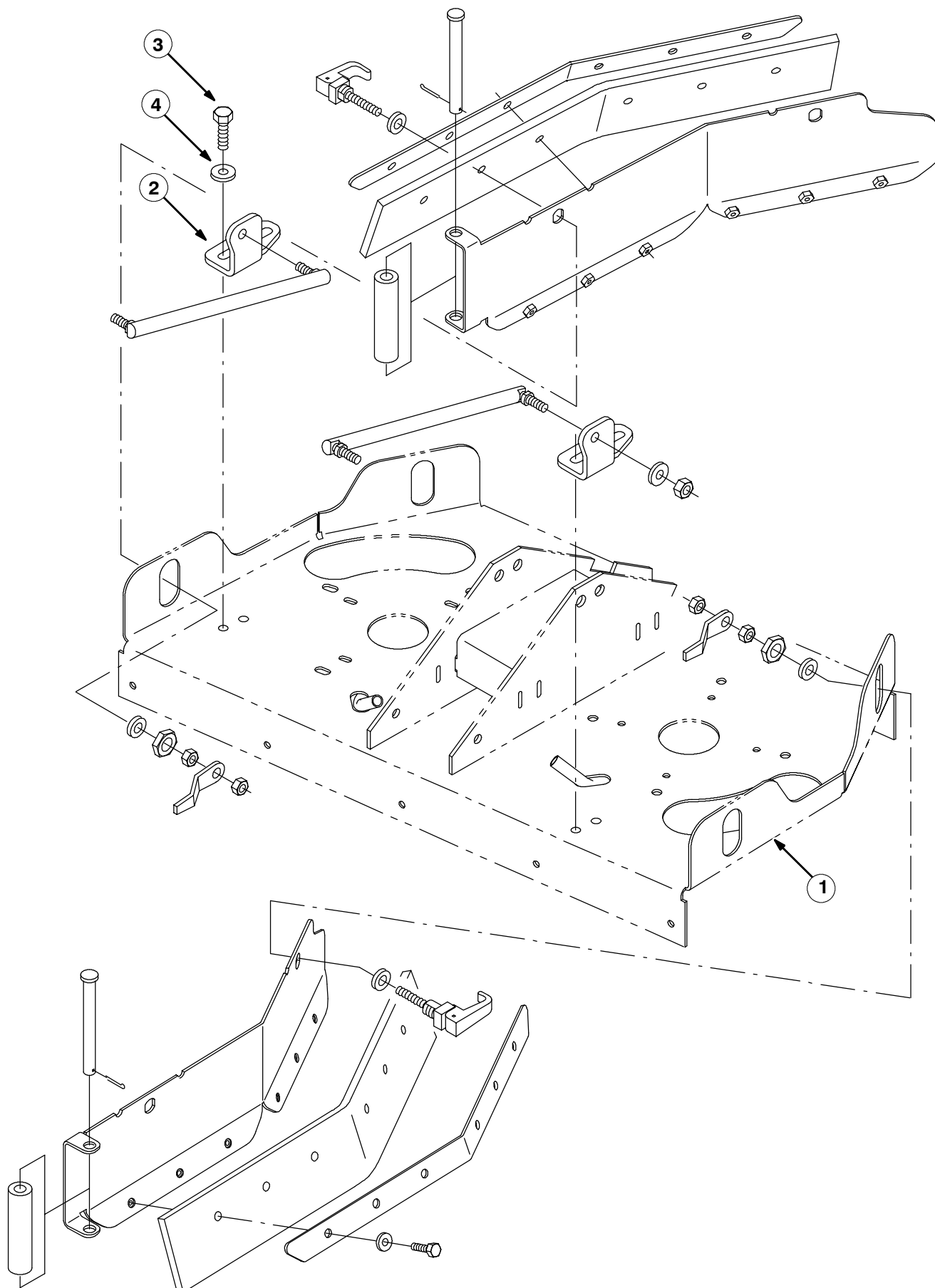


FIG. 4 - Disk Scrub Head Linkage and Squeegee Group 800 mm (32 in)

BILL OF MATERIALS FOR 700MM (28 in) SCRUB HEAD KIT 393164

Ref.	TENNANT Part No.	Description	Qty.
1	1006122	Head wldt, scb, disk, 700MM	1
2	1006123	Bracket, link, head, disk	2
3	10959	Screw, hex, M10 X 1.5 X 20, Ss, NI	4
4	01686	Washer, flat, 0.38 Ss	4

BILL OF MATERIALS FOR 800MM SCRUB HEAD KIT 393165

Ref.	TENNANT Part No.	Description	Qty.
1	1006539	Head wldt, scb, disk, 800MM	1
2	1006123	Bracket, link, head, disk	2
3	10959	Screw, hex, M10 X 1.5 X 20, Ss, NI	4
4	01686	Washer, flat, 0.38 Ss	4

TENNANT COMPANY
P. O. Box 1452
Minneapolis, MN 55440-1452