



# INSTRUCTION BULLETIN

No. 340570  
Machine: EZ Rider HP,  
7080  
Published: 07-2012  
Rev. 03

*NOTE: Numbers in parenthesis ( ) are reference numbers for parts listed in Bill of Materials.*

Installation instructions for **kit number 393151**

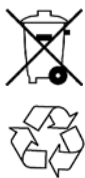
## DESCRIPTION:

This kit contains parts needed to replace and adjust the scrub head lift actuator on EZ Rider HP and 7080 scrubbers.

Please follow step-by-step instructions.

## SPECIAL TOOLS / CONSIDERATIONS: None

(Estimated time to complete: 1 hour)



### PROTECT THE ENVIRONMENT

Please dispose of packaging materials, old machine components, and hazardous fluids in an environmentally safe manner according to local waste disposal regulations.

Always remember to recycle.

## INSTALLATION:

1. Unplug the seat switch. (Fig. 1)

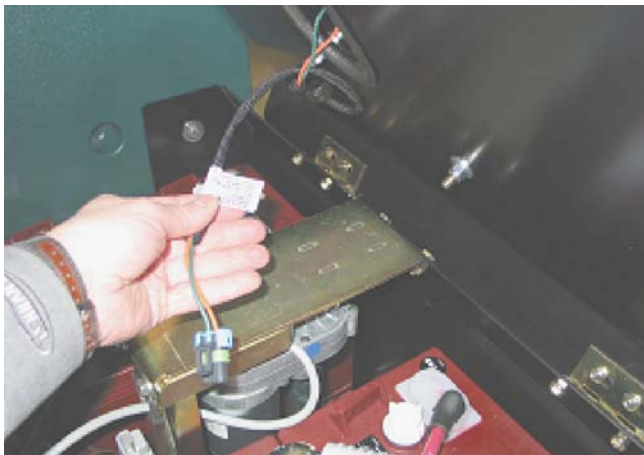


FIG. 1

2. Unplug the traction plug from the P&G controller. (Fig. 2 / Fig. 3)



FIG. 2

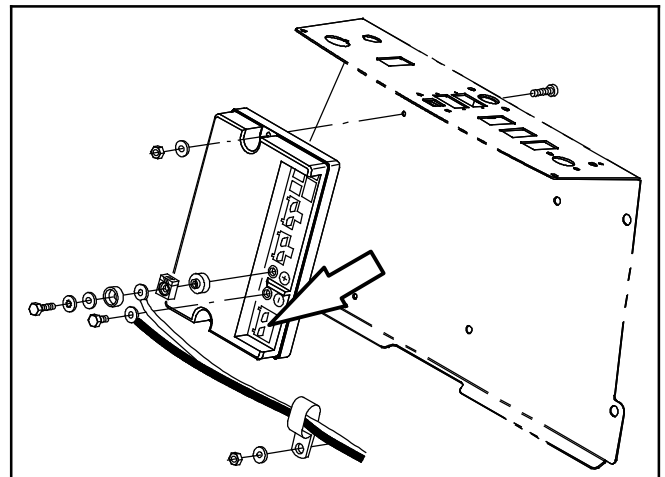


FIG. 3

3. Remove the scrub brushes or pad drivers.
4. Loosen the four bolts holding actuator plate. (Fig. 4)

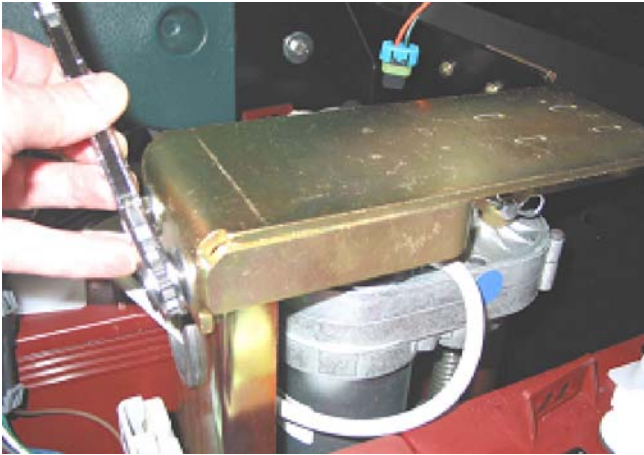


FIG. 4

5. Put the vacuum fan/squeegee switch into the **vacuum off** position. Put the one-step (scrub) switch into the **on** position. (Fig. 5)

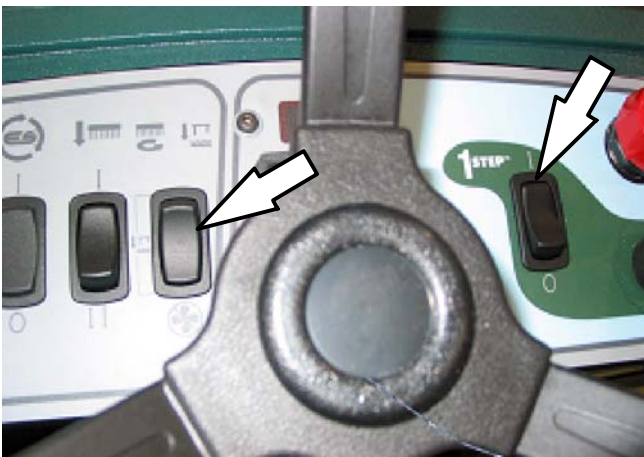


FIG. 5

6. Turn the key switch on and activate the pedal in the forward direction. The scrub deck will begin to lower and the brush motors will turn on. (Fig. 6)



FIG. 6

7. Place supports under the scrub deck so the brushes barely touch the floor. Be sure the supports do not impede brush or pad movement.
8. When the scrub deck makes contact with the floor and begins to raise the actuator plate, turn the power off at the key switch or by using the power kill switch.
9. Remove the four bolts holding the plate in place. (Fig. 7)

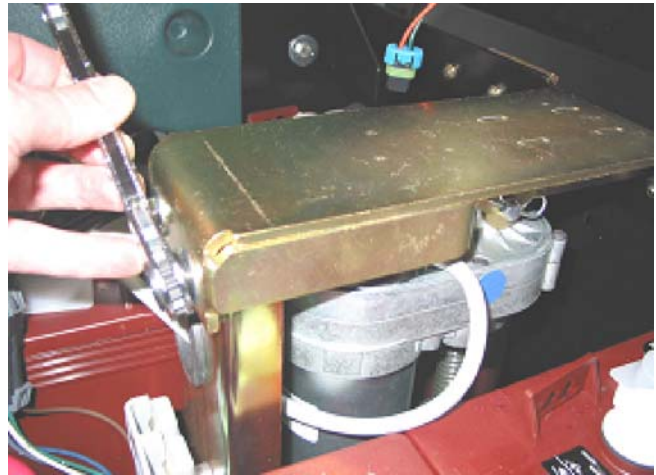


FIG. 7

10. Power on and activate forward propel until the actuator reaches full extension, then power off. (Fig. 8)



FIG. 8

11. Remove the clevis pin from the lower channel.  
(Fig. 9)

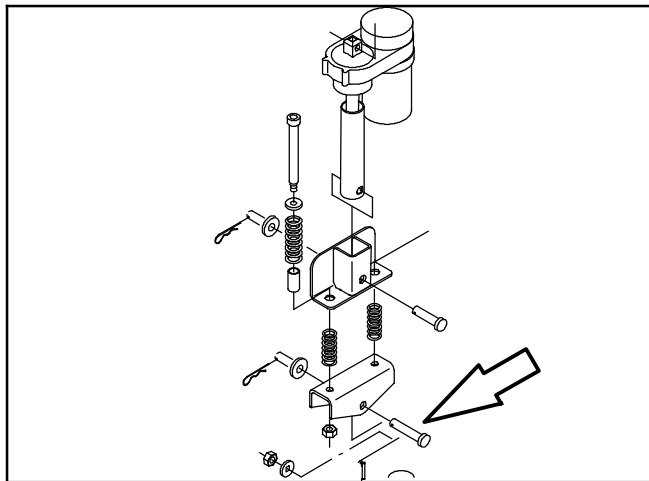


FIG. 9

12. Unplug the actuator and lift out the assembly.  
(Fig. 10)



FIG. 10

13. Remove the lower bracket assembly. (Fig. 11 / Fig. 12)

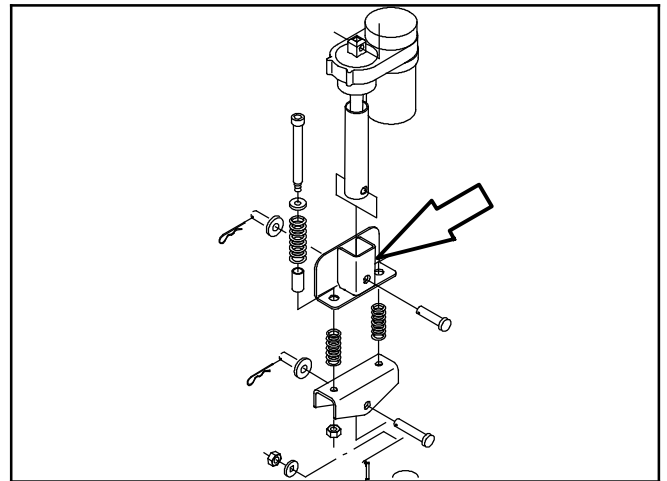


FIG. 11

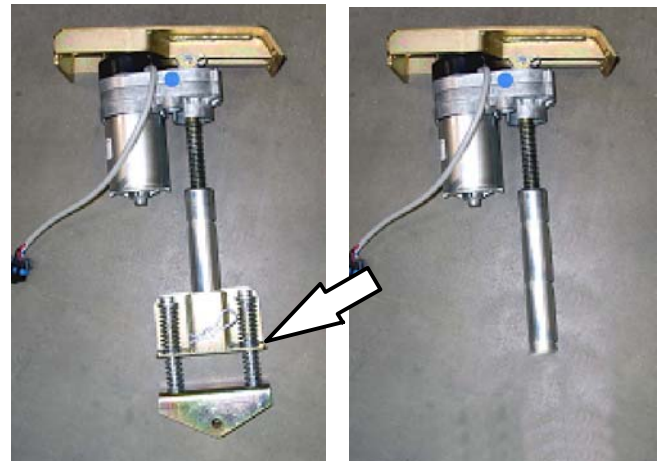


FIG. 12

14. Lay some cardboard or other non-conductive material across the batteries and lay the actuator assembly down on it. (Fig. 13)

**⚠ FOR SAFETY: To prevent shock or sparks, do not lay actuator or metal tools on battery cables.**

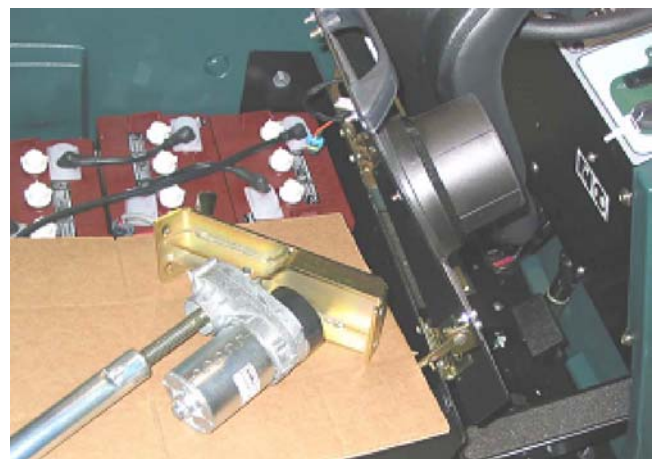
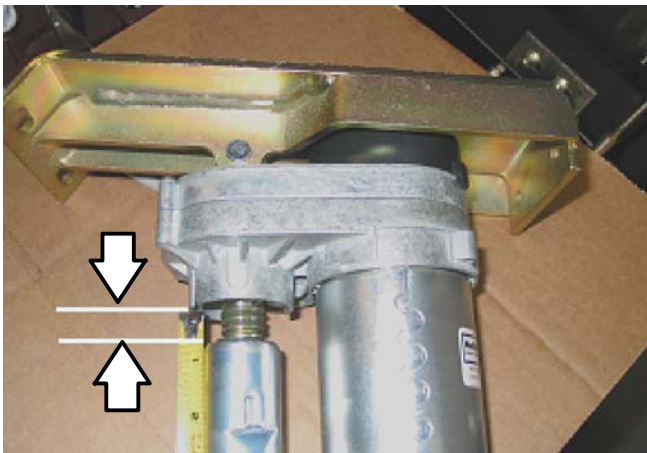


FIG. 13



15. Plug the actuator into the harness, power on and allow the actuator to turn freely until the actuator upper limit switch opens and turns the motor off.
16. Power off. Turn the tube by hand until the gap between the gear-box and tube is 11 mm (7/16 in). (Fig. 14)



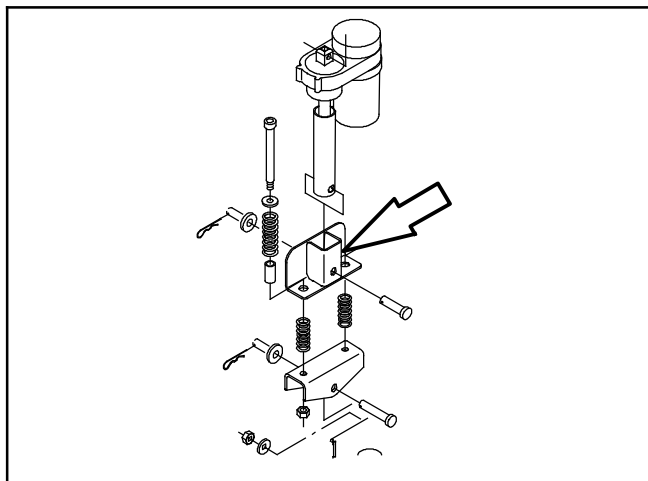
**FIG. 14**

17. Hold the tube, power on, activate forward propel until the actuator reaches full extension, then power off. **HOLD ON TO THE TUBE ALL THE WAY.** If it slips, repeat steps 15 & 16. (Fig. 15)



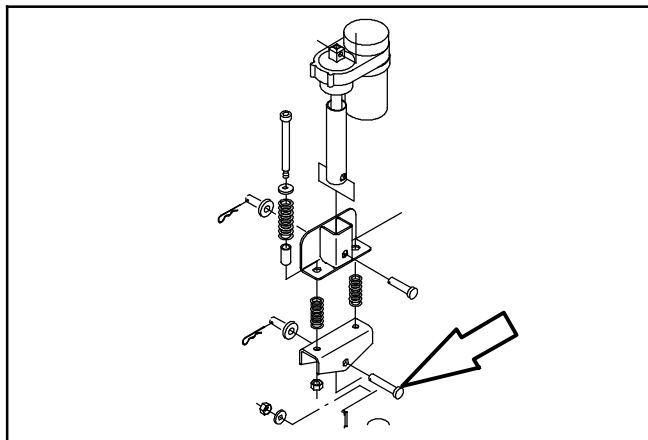
**FIG. 15**

18. Unplug the actuator and reinstall the lower bracket. (Fig. 16)



**FIG. 16**

19. Remove the cardboard and place the actuator back into position.
20. Connect the actuator to the machine by installing the lower clevis pin. (Fig. 17)



**FIG. 17**

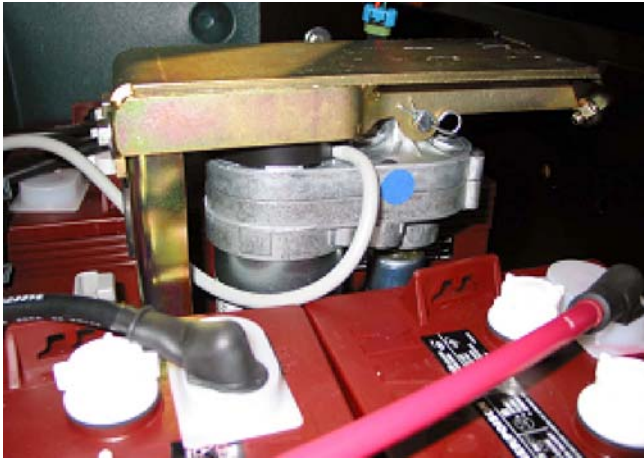
21. Start the two rear bolts into the actuator plate. (Fig. 18)



**FIG. 18**

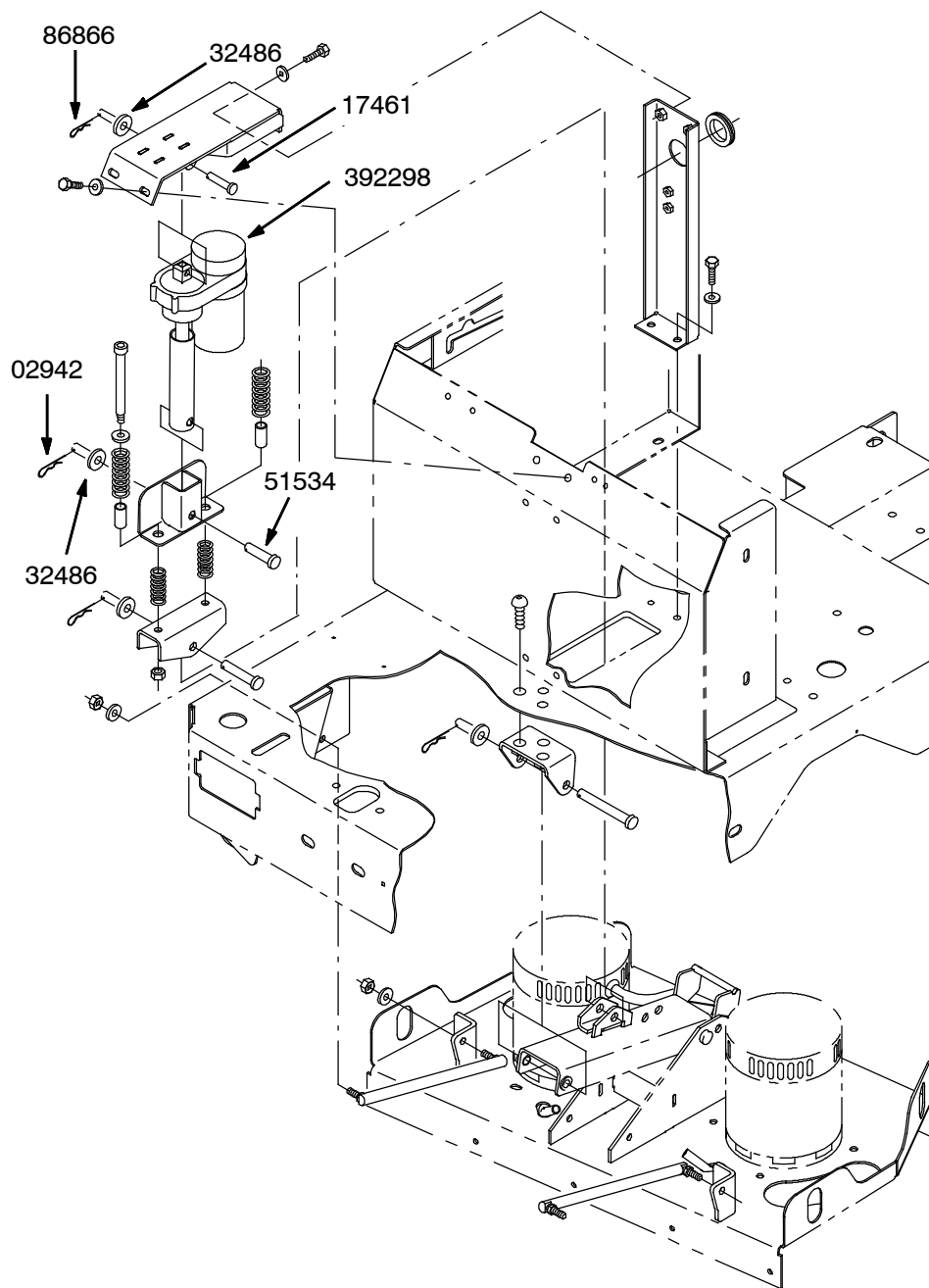
22. Power on, and allow the actuator to retract and pull the upper plate into position. (Fig. 19)

**▲ FOR SAFETY: Keep hands clear of pinch points while retracting actuator.**



**FIG. 19**

23. Remove the supports from under the scrub deck.
24. Install and tighten all four plate bolts and plug in the actuator.
25. Plug in the seat switch and the traction plug.
26. Install scrub brushes or pad drivers.



**BILL OF MATERIALS FOR ACTUATOR REPLACEMENT KIT 393151**

Ref.	TENNANT Part No.	Description	Qty.
1	392928	Actuator, 36VDC, 3.0 Strk, 600 lb	1

TENNANT COMPANY  
P. O. Box 1452  
Minneapolis, MN 55440-1452