



# INSTRUCTION BULLETIN

No. 340560  
Machine: 7300, 8300  
Disk Head Machines  
Published: 12-02  
Rev. 02

**NOTE: DO NOT DISCARD the Parts List from the Instruction Bulletin. Place the Parts List in the appropriate place in your machine manual for future reference. Retaining the Parts List will make it easier to reorder individual parts and will save you the cost of ordering an entire kit.**

*NOTE: Numbers in parenthesis ( ) are reference numbers for parts listed in Bill of Materials.*

Installation instructions for **kit number 1005026**

## DESCRIPTION:

This kit contains the parts needed to relocate the Y-Fitting the on the model 7300 scrubbers and 8300 sweeper/scrubbers with disk heads and vacuumized side squeegees.

Please follow step-by-step instructions.

## SPECIAL TOOLS / CONSIDERATIONS: Hand drill, 7/32 drill bit

The battery pack will have to be removed to work under this machine.

(Estimated time to complete: 2 hours)

## PREPARATION:

(Refer to FIG. 1 thru 10)

**FOR SAFETY: Before leaving or servicing machine, stop on level surface and set parking brake. Then turn off machine and remove key.**

1. The battery pack will have to be removed to work under this machine.
2. Open the top battery compartment cover, and secure in position with the cover support rod.
3. Open the rear battery compartment door.
4. Disconnect battery pack from the machine.



**WARNING: Always disconnect battery cables from machine before working on electrical components.**

5. Remove battery pack from battery compartment with chain hoist or lift.

**NOTE: When servicing machine, use hoist or lift that will support the weight of the battery pack.**

## **Y-FITTING AND HOSE REMOVAL:**

(Refer to FIG. 1 thru 10)

1. Disconnect and remove the rear squeegee from the machine. (Refer to FIG. 1)
2. Reach under the machine from the left hand side and locate the Y-fitting. It is located approximately in line with the rear wheels, in the middle of the machine. (Refer to FIG. 2)
3. Disconnect and remove the hose that routes from the Y-fitting to the rear squeegee.
4. Locate the hose that routes from the Y-fitting to the recovery tank. Remove and set aside the 13 mm bolts from the bracket holding the hose to the inside wall of the recovery tank. Cut the cable ties holding the hose to the other cables. Note the hose route, and remove it from underneath the machine. (Refer to FIG. 3)

## **HOLDING BRACKET INSTALLATION:**

(Refer to FIG. 4 thru 6, 9)

1. Using the dimensions shown in FIG. 4 for reference, mark and drill a 7/32 hole in the support tube. Tap the hole, or use a thread rolling screw, when installing the bracket. (Refer to FIG. 4 and 9)
2. Install the bracket (1) with M6, 16 mm hex screw (2) and washer (3). (Refer to FIG. 5)
3. Attach a 1" diameter hose (6) to the Y-fitting. Snap the Y-fitting into the holding bracket (1) and feed the 1" diameter hose (6) through the frame as shown. (Refer to FIG. 6 and 7)
4. Adjust the bracket height in the slot, so that the Y-fitting snaps in firmly.

## **NEW HOSE INSTALLATION:**

(Refer to FIG. 7 and 8)

1. Plug the 75" long 2" diameter hose (4) into the recovery tank. Route the hose through the frame, following the same route as the old hose, aiming for the new location of the Y-fitting. (Refer to FIG. 7)
2. Route the new 1" diameter hose from the right hand side squeegee, along the inside of the right hand frame, over the support braces and towards the new Y-fitting location.
3. Connect the 2" diameter hose and the 1" diameter hose to the Y-fitting. Snap the Y-fitting into the bracket. (Refer to FIG. 8)
4. Replace the squeegee assembly on the machine.
5. Connect one end of the 25.5" long, 2" diameter hose (5) to the Y-fitting. Connect the other end of the hose to the squeegee.

**NOTE: Detach all hoses from Y-fitting and pull Y-fitting out of holding bracket to clean out Y-fitting after operation.**

6. Replace the battery pack in the rear of the machine.
7. Connect the battery pack to the machine. Close the rear door and top compartment cover.

**NOTE: When servicing machine, use hoist or lift that will support the weight of the battery pack.**

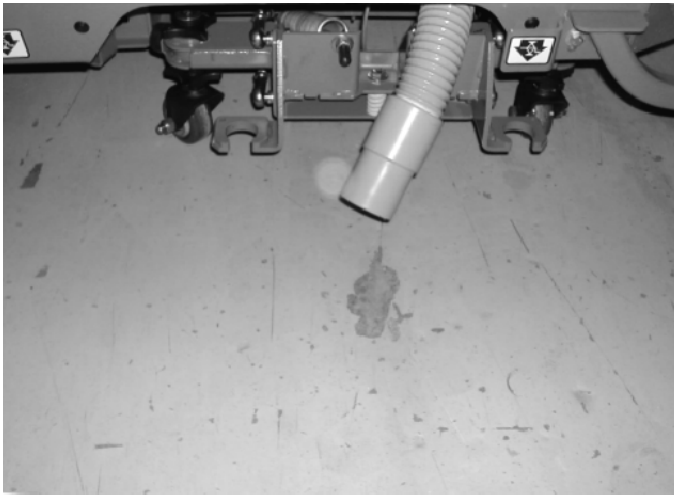


FIG. 1

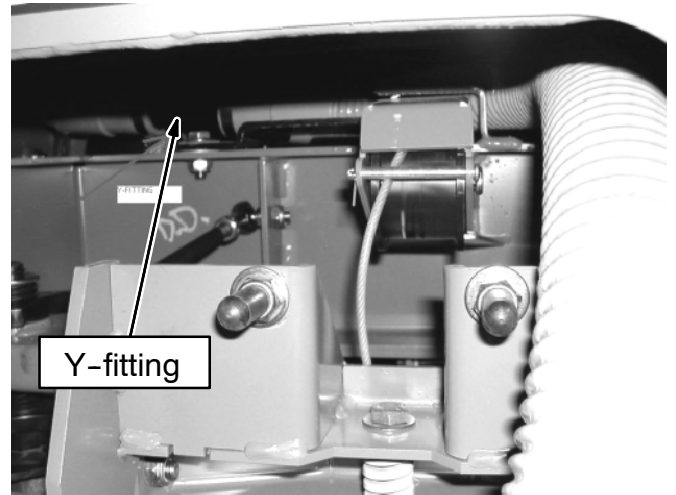


FIG. 2

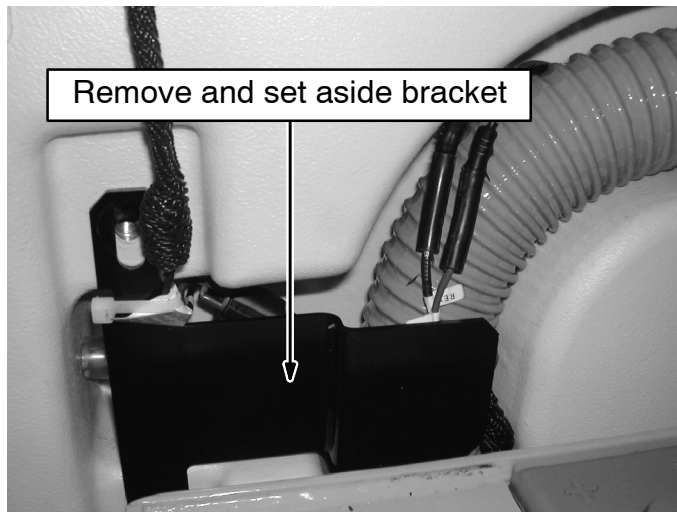


FIG. 3

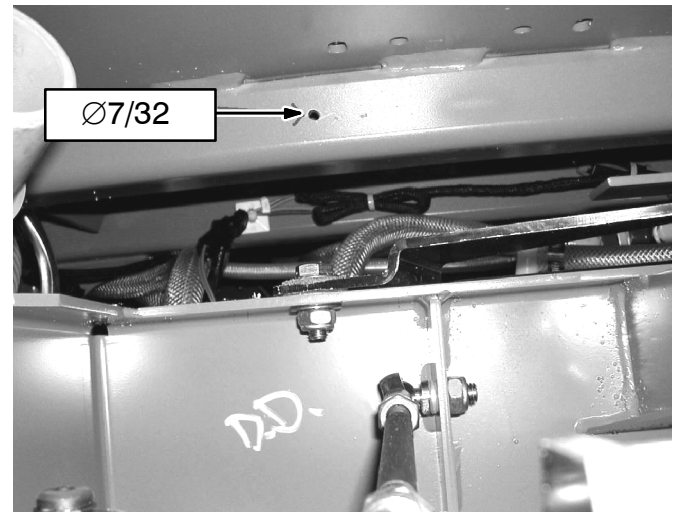


FIG. 4

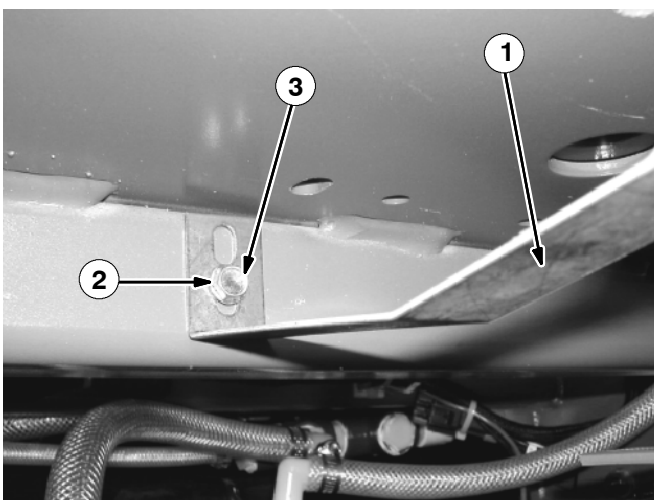


FIG. 5

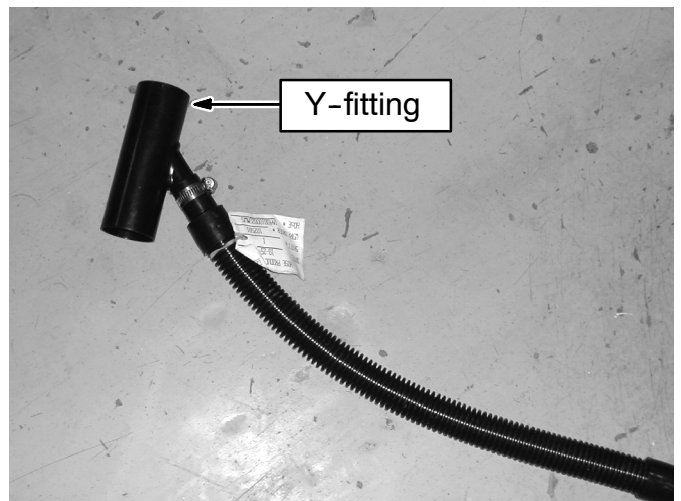
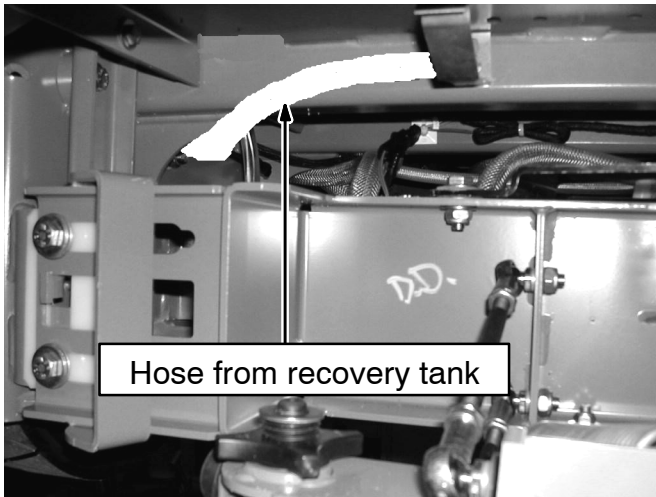
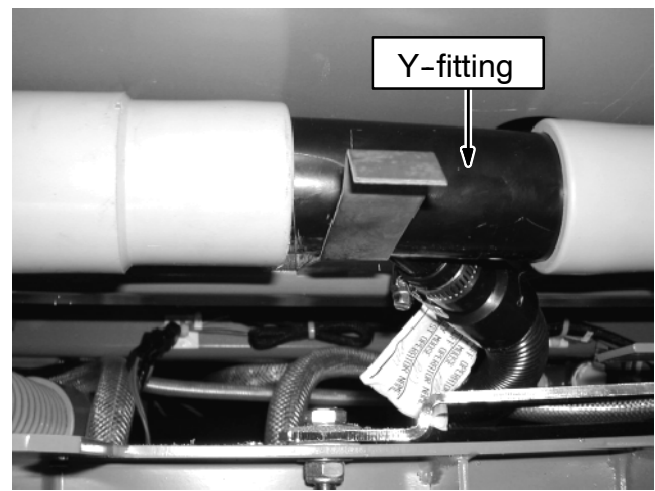


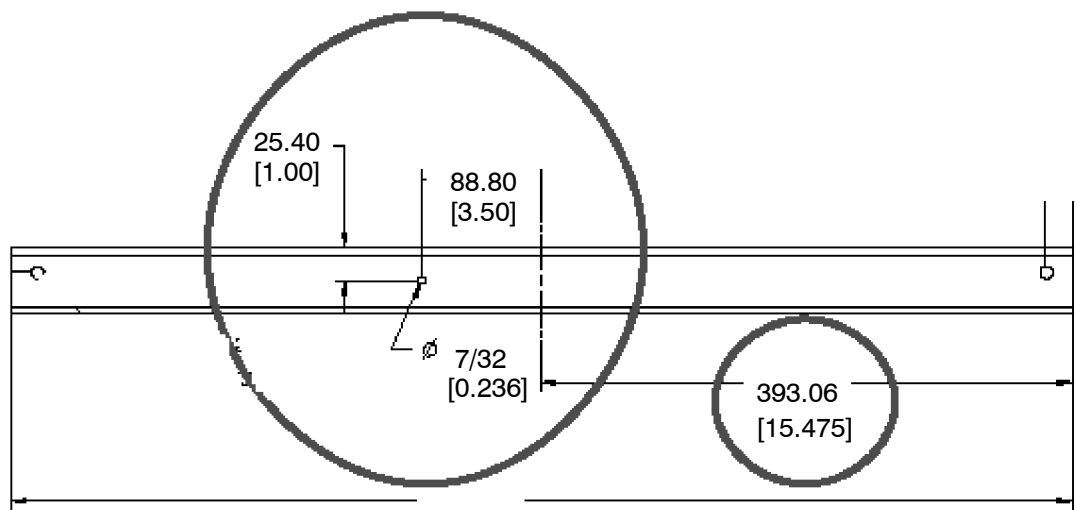
FIG. 6



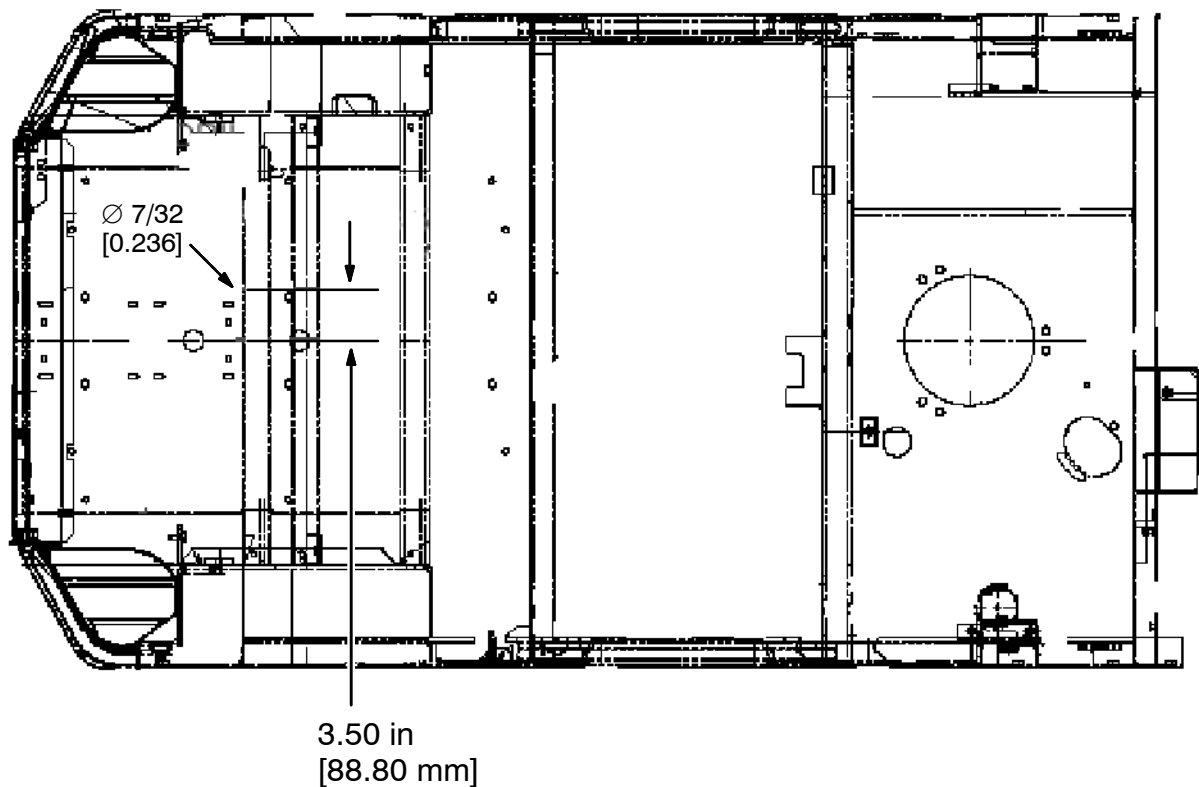
**FIG. 7**



**FIG. 8**



**FIG. 9**



**FIG. 10**

**BILL OF MATERIALS FOR Y-FITTING RELOCATION KIT 1005025**

Ref.	TENNANT Part No.	Description	Qty.
1	1002464	Bracket, tube, tee	1
2	361339	Screw, hex, M6 X 1.0 X 16, FMG	1
3	32483	Washer, flat, 0.25 SAE	1
4	386514	Hose, assy, W/2 cuff, 2.0 D 75L	1
5	387256	Hose, vacuum, 25.5 L, 2.0 ID	1
6	1002853	Hose assy, W/2 cuff, 1.0 ID 52L	1

TENNANT COMPANY  
P. O. Box 1452  
Minneapolis, MN 55440-1452