



INSTRUCTION BULLETIN

No. 340553
Machine: 7100/EZ Rider
Published: 6-02
Rev. 00

NOTE: DO NOT DISCARD the Parts List from the Instruction Bulletin. Place the Parts List in the appropriate place in your machine manual for future reference. Retaining the Parts List will make it easier to reorder individual parts and will save you the cost of ordering an entire kit.

NOTE: Numbers in parenthesis () are reference numbers for parts listed in Bill of Materials.

Installation instructions for **kit number 398463**

DESCRIPTION:

This kit contains the parts needed to replace the high dba horn with a low dba horn on the model 7100 and EZ Rider scrubbers.

Please follow step-by-step instructions.

SPECIAL TOOLS / CONSIDERATIONS: NONE

(Estimated time to complete: 1/2 hour)

PREPARATION:

(Refer to FIG. 1 thru 3)

FOR SAFETY: Before leaving or servicing machine, stop on level surface and set parking brake. Then turn off machine and remove key.

1. Disconnect battery cables from machine.



WARNING: Always disconnect battery cables from machine before working on electrical components.

INSTALLATION:

(Refer to FIG. 1 thru 3)

1. Locate the high dba horn (369702) under the front left hand side of the machine frame.
2. Disconnect the high dba horn (369702) from the wire harness. Disconnect and remove the high dba horn (369702) from the machine. (Refer to FIG. 2)
3. Mark and drill a new 7 mm (9/32) hole in the horn mounting plate. (Refer to FIG. 1)
4. Clip off the existing connector ends from the horn wires 13J/BLK and 38A/GRY. Attach the ring terminals from the new horn package to the wire ends.
5. Attach 38A/GRY wire ring terminal to the positive (+) horn connection and the 13J/BLK wire ring terminal to the negative (-) horn connection. (Refer to FIG. 3)
6. Install the new horn (1) with the stainless steel screw (5) and lock washer (6).
(Refer to FIG. 2)
7. Reconnect the battery cables to the machine.
8. Turn the machine power on. Check the horn for proper operation.

BILL OF MATERIALS FOR LOW DBA HORN REPLACEMENT KIT 398463

Ref.	TENNANT Part No.	Description	Qty.
1	392937	Horn	1
2	398467	Terminal	2
3	19319	Screw, #06	2
4	32975	Washer, lock, Int #06	2
5	01697	Screw, 0.25 X 0.625 Ss	1
6	140016	Washer, lock, 0.25	1

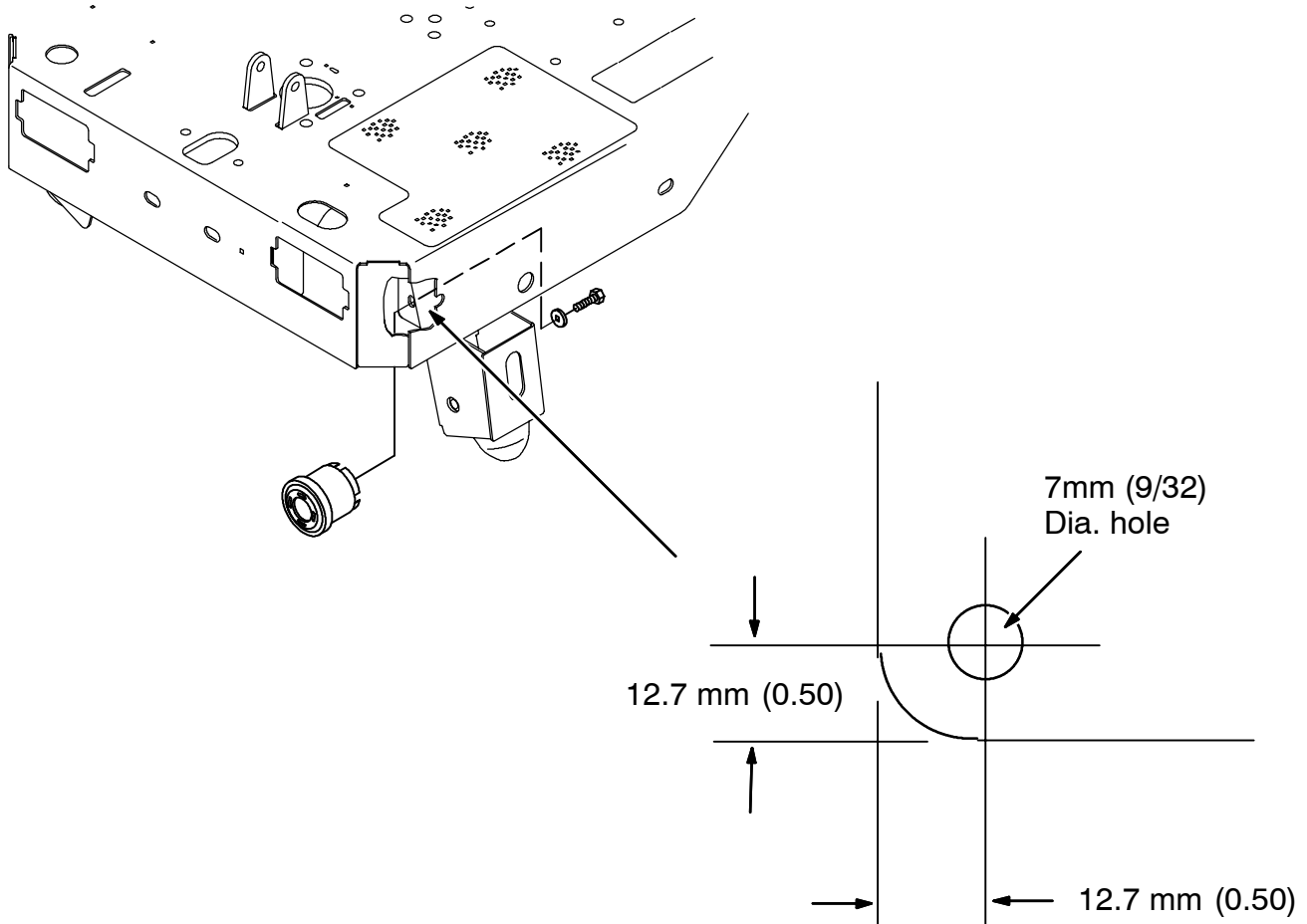


FIG. 1 - REWORK MOUNTING PLATE

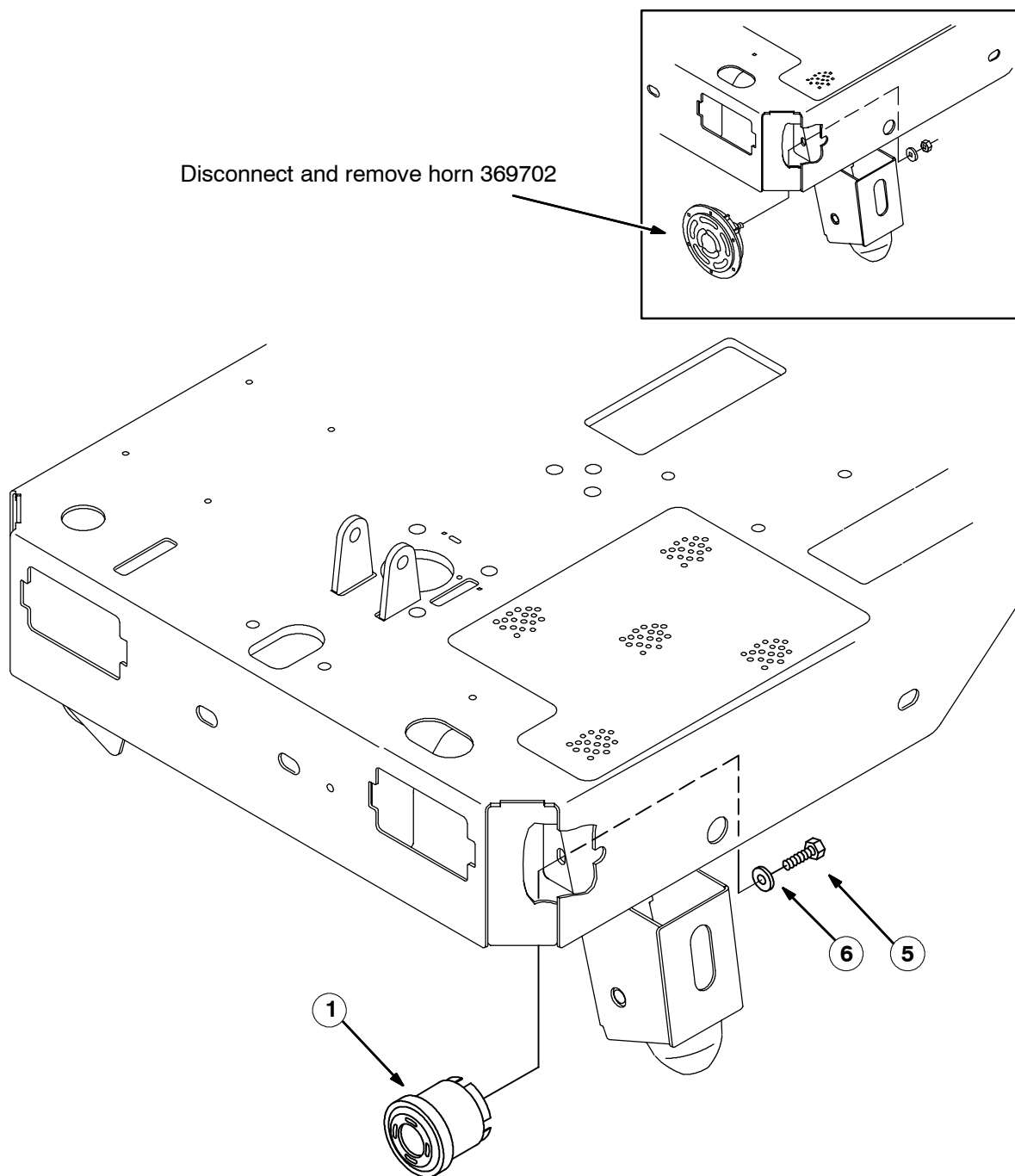


FIG. 2 - NEW HORN INSTALLATION

TENNANT COMPANY
P. O. Box 1452
Minneapolis, MN 55440-1452

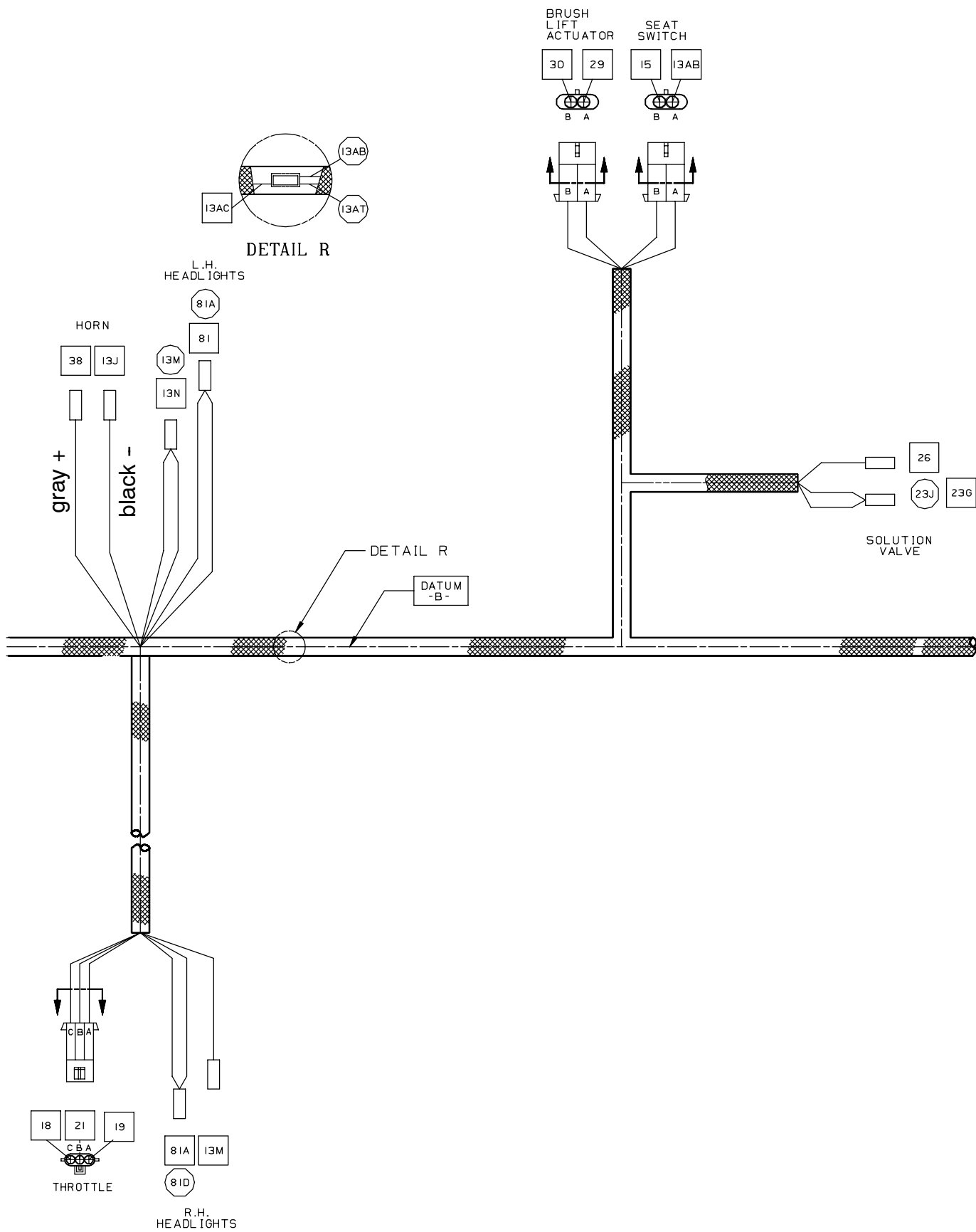


FIG. 3 - WIRE HARNESS GROUP