



INSTRUCTION BULLETIN

No. 340533
Machine: 6100E
Published: 08-2015
Rev. 03

NOTE: DO NOT DISCARD the Parts List from the Instruction Bulletin. Place the Parts List in the appropriate place in the machine manual for future reference. Retaining the Parts List will make it easier to reorder individual parts and will save the cost of ordering an entire kit.

NOTE: Numbers in parenthesis () are reference numbers for parts listed in Bill of Materials.

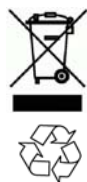
Installation instructions for **kit number 374177**

SYNOPSIS:

This kit contains the parts needed to replace the front wheel drive assembly on 6100E sweepers. Please follow step-by-step instructions.

SPECIAL TOOLS / CONSIDERATIONS: Torque bar, two M12 X 1.75 60 screws

(Estimated time to complete: 2 hours)



PROTECT THE ENVIRONMENT

Please dispose of packaging materials, used machine components such as batteries and fluids in an environmentally safe way according to local waste disposal regulations.

Always remember to recycle.

PREPARATION:

FOR SAFETY: Before leaving or servicing machine, stop on level surface, turn off machine, set parking brake, and remove key.

1. Disconnect the battery cable from the machine.



WARNING: Always disconnect battery cables from machine before working on electrical components.

2. Chock both rear tires.

3. Jack up the front end of the machine high enough to access the front wheel drive assembly and remove the front wheel drive assembly from under the machine. Place jack stands under the machine frame and lower the machine onto the jack stands. (Fig. 1)

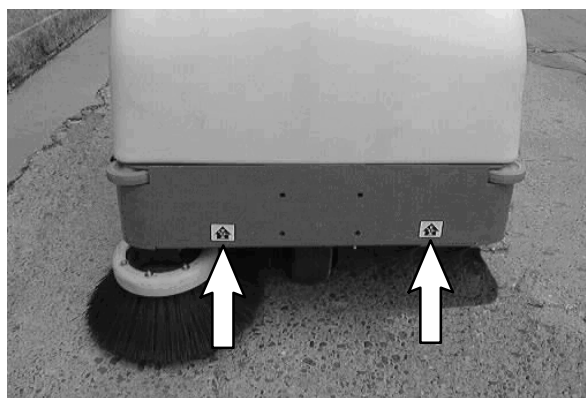


FIG. 1

FOR SAFETY: When servicing machine, block machine tires before jacking machine up. Use a hoist or jack that will support the weight of the machine. Jack machine up at designated locations only. Support machine with jack stands.

INSTALLATION:

1. Disconnect the parking brake assembly from the front wheel drive group.
2. Turn the front tire until the steering chain master link is visible. Remove the master link from the drive chain. Loosen bolts holding the bearing housing for steering, and slide back.
3. Remove the chain from the steering sprocket and drive wheel sprocket. Remove the steering chain from the machine.
4. Disconnect the main wire harness from the drive motor.
5. Disconnect the tension spring from the motor wire harness. (Fig. 3)
6. Support the front drive wheel assembly.
7. Remove the four M12 button screws securing the front wheel drive assembly to the machine. Set the four M12 button screws aside. (Fig. 2)
8. Let the front wheel drive assembly drop down from the machine.

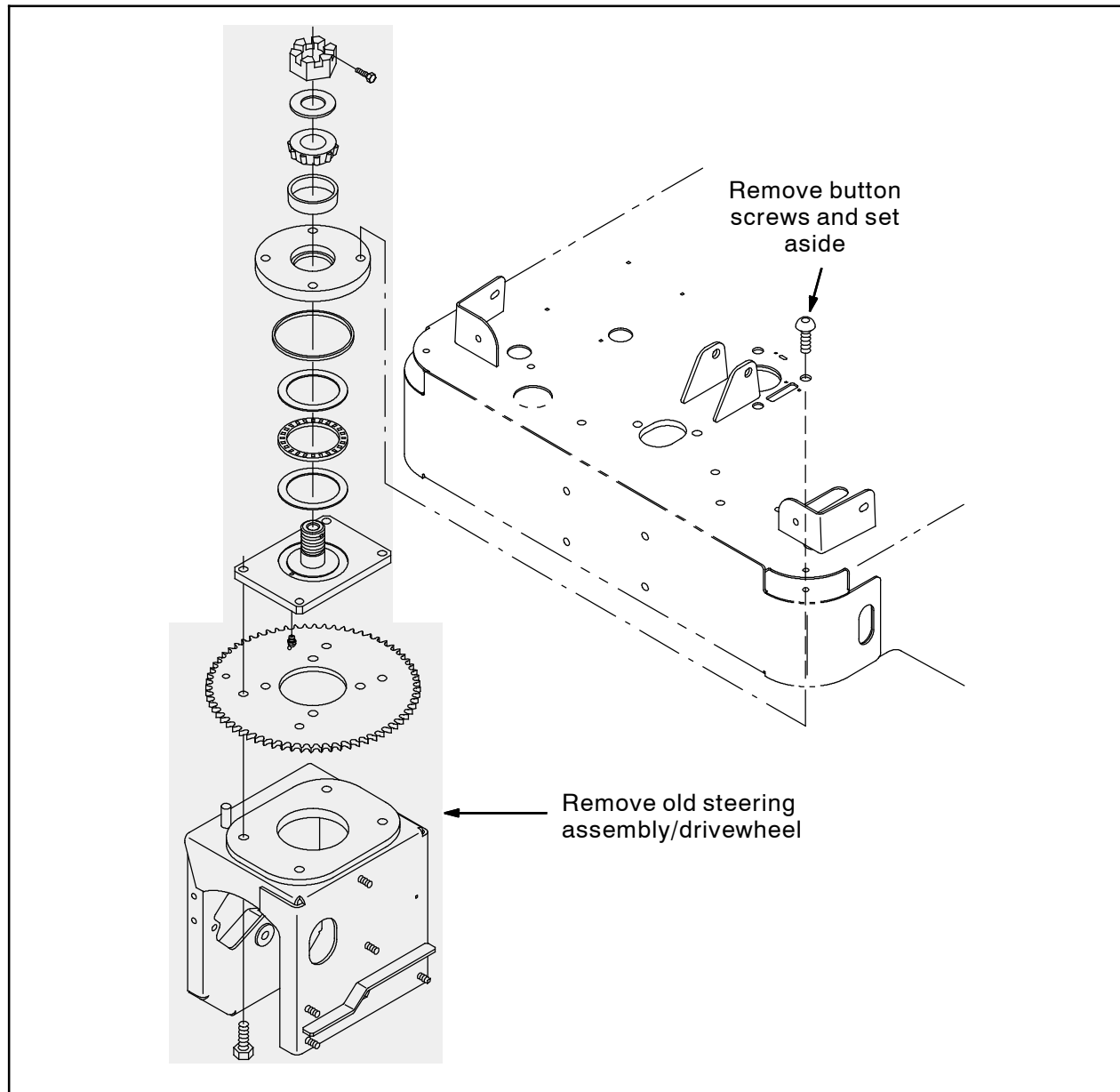


FIG. 2

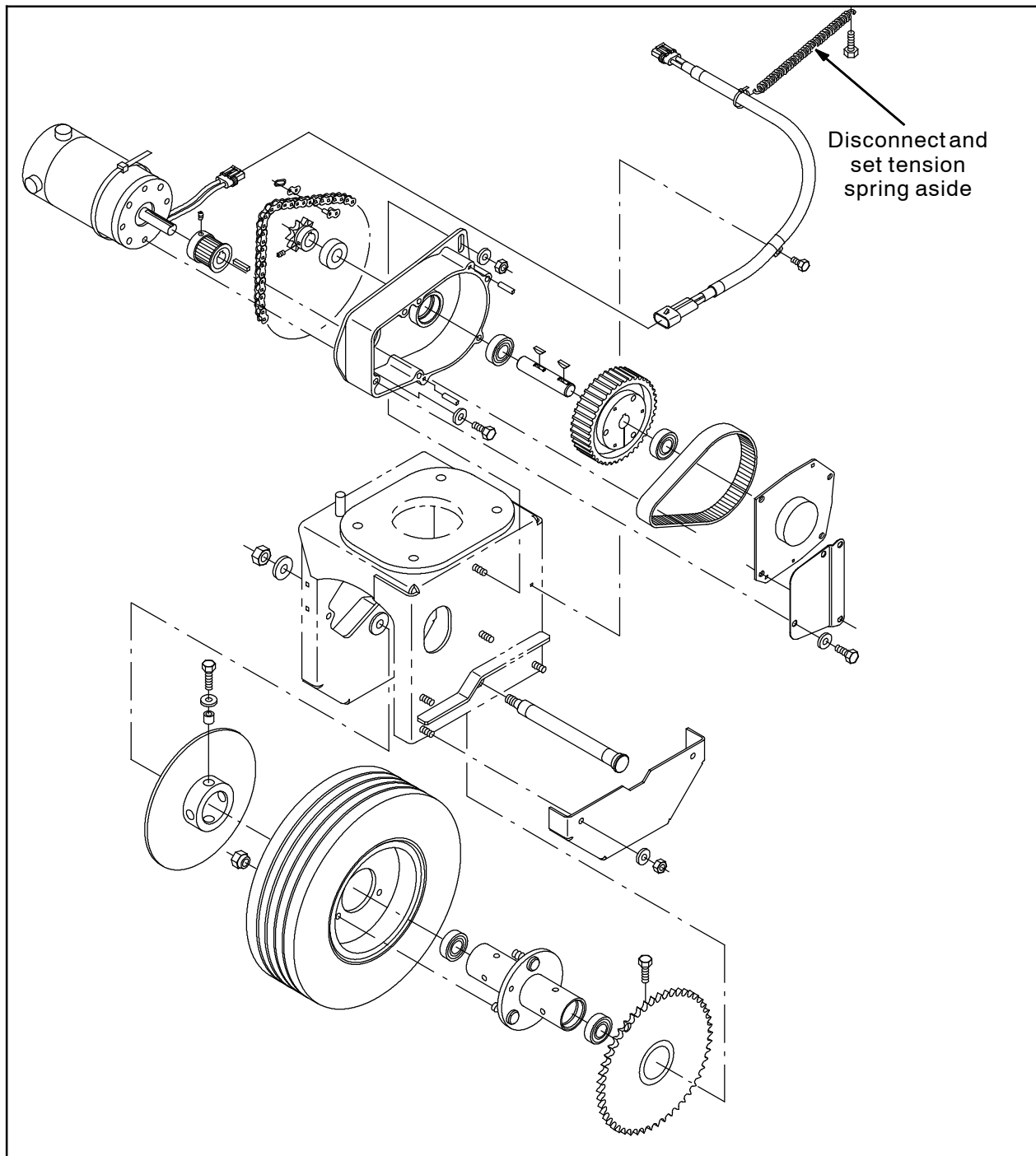


FIG. 3

9. Remove the heads from two M12 X 1.75 60 screws. Taper the ends of the screws where the heads were removed. The screws will be used as pilot screws for installing the new front wheel assembly.
10. Hand tighten the two pilot screws in two opposite corners of the swivel mounting plate.
11. Guide and support the new front wheel drive assembly into place under the machine.

NOTE: The new front wheel drive assembly will need to be installed with spacers included with the front wheel assembly. (Fig. 4)

12. Secure the new front drive wheel group in place with two of the M12 button screws (in opposite corners from the pilot screws). Torque to 70- 84 Nm (50- 60 ft lb). (Fig. 4)
13. Remove the two pilot screws from the swivel mounting plate.
14. Install the remaining two M12 button screws where the two pilots were previously located. Torque to 70- 84 Nm (50- 60 ft lb). (Fig. 4)

15. Use the cable clamp (17), one M6 hex screw (20), two flat washers (21), and one M6 hex nut to connect the tension spring to the cable to the motor wire harness (41). (Fig. 4)
16. Connect the parking brake assembly to the front wheel drive group.
17. Connect the main wire harness to the drive motor.
18. Install the drive chain onto the steering sprocket and drive wheel sprocket on the front wheel assembly. Reinstall the master link.
19. Raise machine slightly from jack stands, remove the jack stands from under the machine, and lower the machine to the floor.
20. Operate the machine, and check for proper operation.

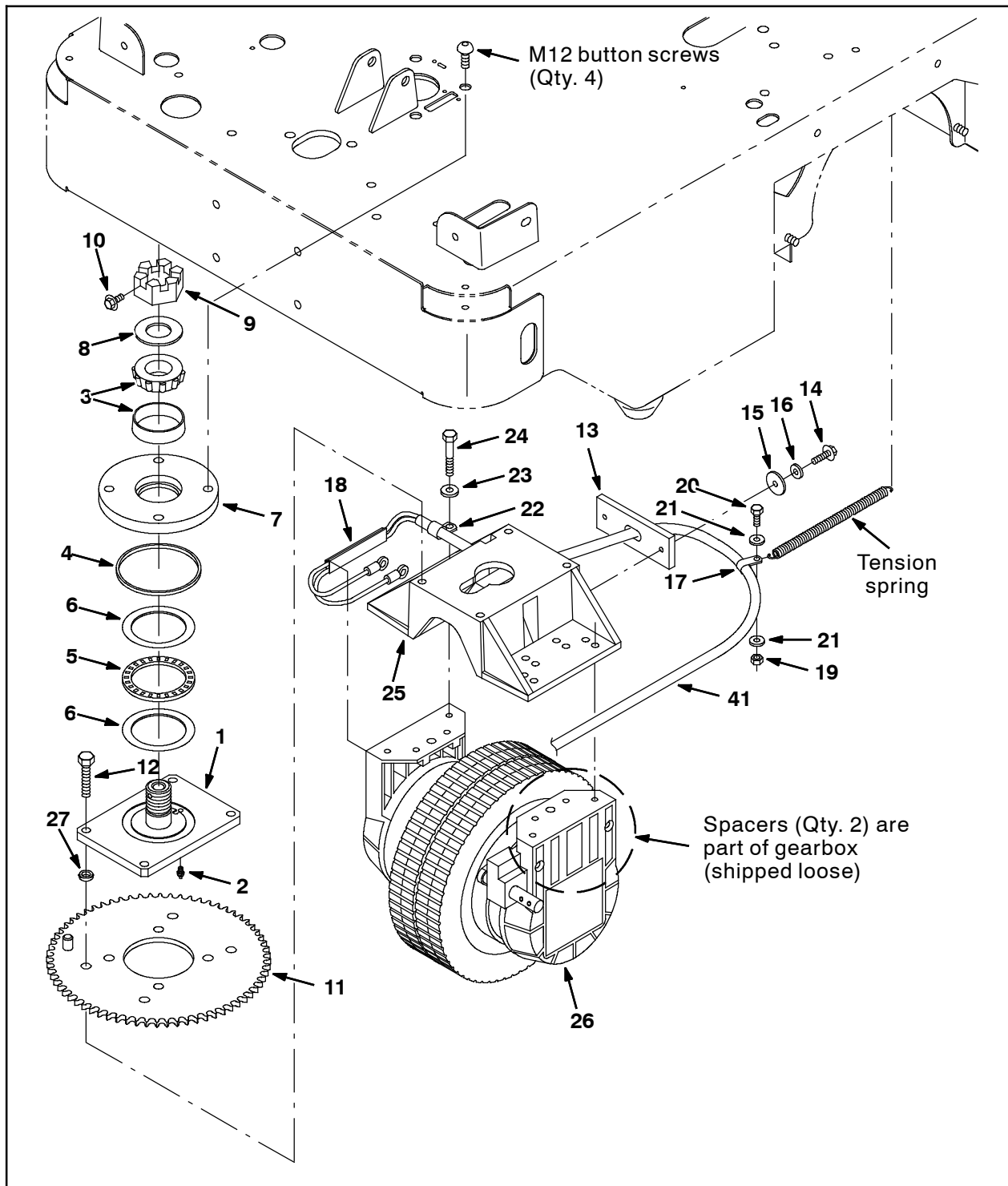


FIG. 4

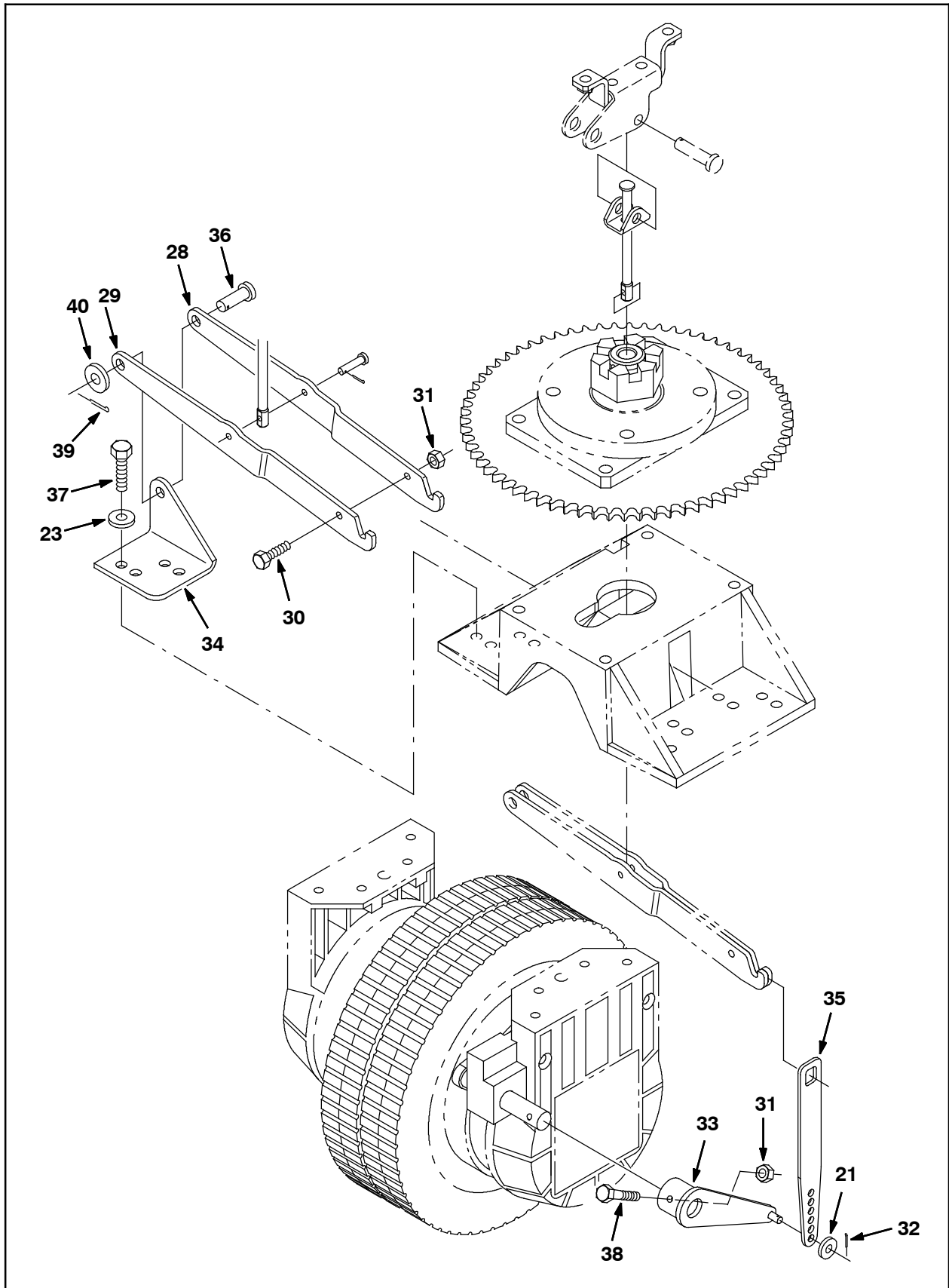


FIG. 5

Bill Of Materials For Wheel Assy Kit, Drive, Modif [6100E] - 374177

| Ref. | Tennant Part No. | Description | Qty. |
|-------------|-----------------------------|---|-------------|
| 1 | 390855 | Plate Wldt, Swivel | 1 |
| 2 | 07259 | Fitting, Grease, Str Pm04 .47l | 1 |
| 3 | 49225 | Bearing Assy, 2.33d 1.25b Cup/Cone | 1 |
| 4 | 223160 | Seal, Ring | 1 |
| 5 | 223154 | Bearing, Needle | 1 |
| 6 | 223161 | Washer, Thrust | 2 |
| 7 | 223157 | Plate, Swivel, Bottom | 1 |
| 8 | 223153 | Washer | 1 |
| 9 | 223159 | Nut, Hex, Sltd, 1.25- 12 | 1 |
| 10 | 361339 | Screw, Hex, M06 X 1.0 X 16, Fmg | 1 |
| 11 | 374163 | Sprocket Wldt, Steering, Drive | 1 |
| 12 | 06962 | Screw, Hex, M10 X 1.5 X 45, 8.8 | 4 |
| 13 | 1001959 | Flap, Strainrelief | 1 |
| 14 | 222159 | Screw, Hex, M06 X 1.0 X 25, Fmg | 2 |
| 15 | 32490 | Washer, Flat, .25 Std | 2 |
| 16 | 41178 | Washer, Flat, 0.25 Fender | 2 |
| 17 | 26395- 1 | Clamp, Cable, Stl, 0.56d X 0.38w, 1h | 1 |
| 18 | 1027395 | Duct, Pvc, 0.73 X 0.75 . 05d 0.48l | 1 |
| 19 | 08712 | Nut, Hex, Lock, M06 X 1.0, NI, SS | 1 |
| 20 | 15678 | Screw, Hex, M06 X 1.0 X 16, SS | 1 |
| 21 | 32483 | Washer, Flt, .25 SAE | 3 |
| 22 | 67767 | Clamp, Cable, Stl, 0.69d X 0.62w, 1h | 1 |
| 23 | 01685 | Washer, Flt, .31 SS | 8 |
| 24 | 222504 | Screw, Hex, M08 X 1.25 X 55, SS | 1 |
| 25 | 390848 | Plate, Adapter, Wheel | 1 |
| 26 | 374346 | Gearbox, Wheel, 250mm, 36vdc Band Brake | 1 |
| 27 | 1071856 | Spacer, 0.39B, 0.50D, 0.12L | 4 |
| 28 | 1017440 | Arm, Link, Brake, LH | 1 |
| 29 | 1017439 | Arm, Link, Brake, RH | 1 |
| 30 | 08716 | Screw, Hex, M06 X 1.0 X 20, SS | 1 |
| 31 | 08712 | Nut, Hex, Lock, M06 X 1.0, NI, SS | 2 |
| 32 | 08170 | Pin, Cotter, .062 X 0.50 | 1 |
| 33 | 1002522 | Arm Wldt, Brake | 1 |
| 34 | 1002536 | Bracket, Brake, Pivot | 1 |
| 35 | 1002537 | Link, Brake | 1 |
| 36 | 86240 | Pin, Clevis, 0.38 D X 1.13l | 1 |
| 37 | 06957 | Screw, Hex, M8 X 1.25 X 60, 8.8 | 2 |
| 38 | 33930 | Screw, Hex, M6 X 1.0 X 40, SS | 1 |
| 39 | 08182 | Pin, Cotter, .125 X 1.00 | 1 |
| 40 | 32492 | Washer, Flat, 0.38 Std | 1 |
| 41 | 374164 | Harness, Wire, Traction Motor | 1 |

TENNANT COMPANY
P. O. Box 1452
Minneapolis, MN 55440-1452