



INSTRUCTION BULLETIN

No. 340504
Machine: 6500, 6550
Published: 8-01/00
System: CHASSIS

NOTE: DO NOT DISCARD the Parts List from the Instruction Bulletin. Place the Parts List in the appropriate place in your machine manual for future reference. Retaining the Parts List will make it easier to reorder individual parts and will save you the cost of ordering an entire kit.

NOTE: Numbers in parenthesis () are reference numbers for parts listed in Bill of Materials.

Installation instructions for kit number 374711

SYNOPSIS / PROBLEM:

This kit contains the parts needed to install/replace a brake cable connector kit on the model 6500 and 6550 sweepers.

Please follow step-by-step instructions.

SPECIAL TOOLS / CONSIDERATIONS: NONE

(Estimated time to complete: 1 hour)

PREPARATION:

(Refer to FIG. 1, 2 and 3)

FOR SAFETY: Before leaving or servicing machine, stop on level surface and set parking brake. Then turn off machine and remove key.

1. Turn the parking brake knurled knob counterclockwise until it stops.
2. Raise the operator seat assembly, and secure with the seat support rod.
3. Disconnect battery cables and remove the battery from the machine to gain access to the floor plate mounting bolts in the operators compartment.
4. Disconnect the propel pedal linkage from the propel pedal. (Refer to FIG. 1)
5. Remove and set aside the floor plate and mounting hardware from the operator's compartment. (Refer to FIG. 1)



WARNING: Always disconnect battery cables from machine before working on electrical components.

INSTALLATION:

(Refer to FIG. 1, 2 and 3)

1. Locate the brake cable clevis, rod and cable clip connected to the brake pedal.
2. Remove and discard the cable clevis 54467, brake rod 54619, cable clip 58288 with hex nut 39313 and two flat washers 32493. (Refer to FIG. 2)
3. Set aside one of the cotter pins 08182 to use with the installation of the new parts.
4. Install the new cable clevis (1), yoke (2) and clevis pin (4) with the hex nut (3) and set aside cotter pin 08182, in place of the old brake cable parts. (Refer to FIG. 3)

5. Adjust the amount of travel in the brake pedal with the yoke on the brake rod. The pedal should travel no more than 25–50 mm (1–2 in) before the brakes engage.
6. Secure the clevis pin with the set aside cotter pin 08182.
7. Replace the floor plate and secure with the set aside mounting hardware. (Refer to FIG. 1)
8. Reconnect the propel pedal linkage to the propel pedal. (Refer to FIG. 1)
9. Replace the battery in the machine, and reconnect the battery cables.
10. Raise the operator seat assembly, disengage the seat support rod, and lower the seat.
11. Check the parking brake adjustment. The parking brake may be tightened by turning the knurled knob on the end of the parking brake clockwise.
12. Adjust the parking brake so it will hold the machine on a smooth 8 degree incline.

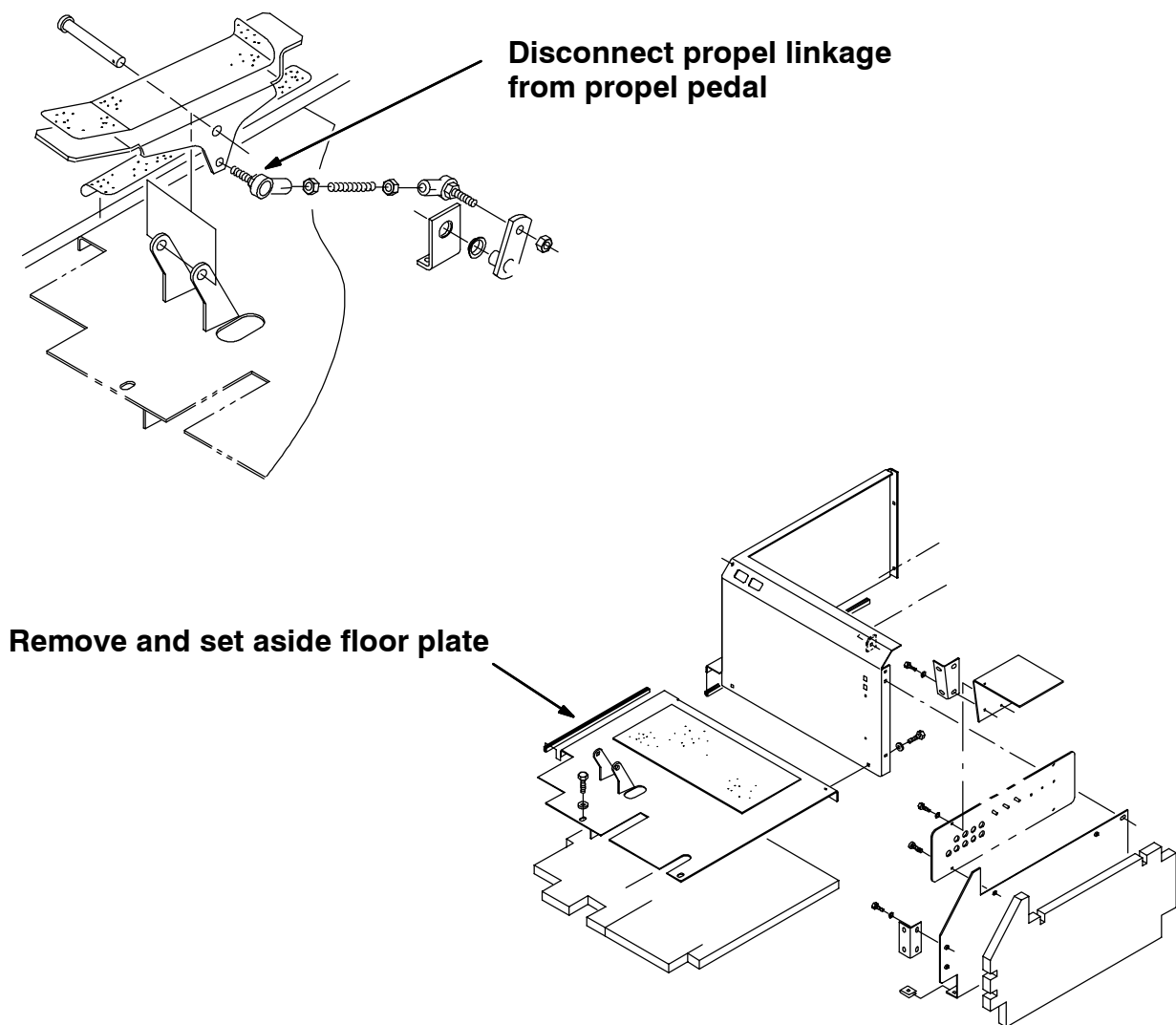


FIG. 1 - FLOOR PLATE REMOVAL

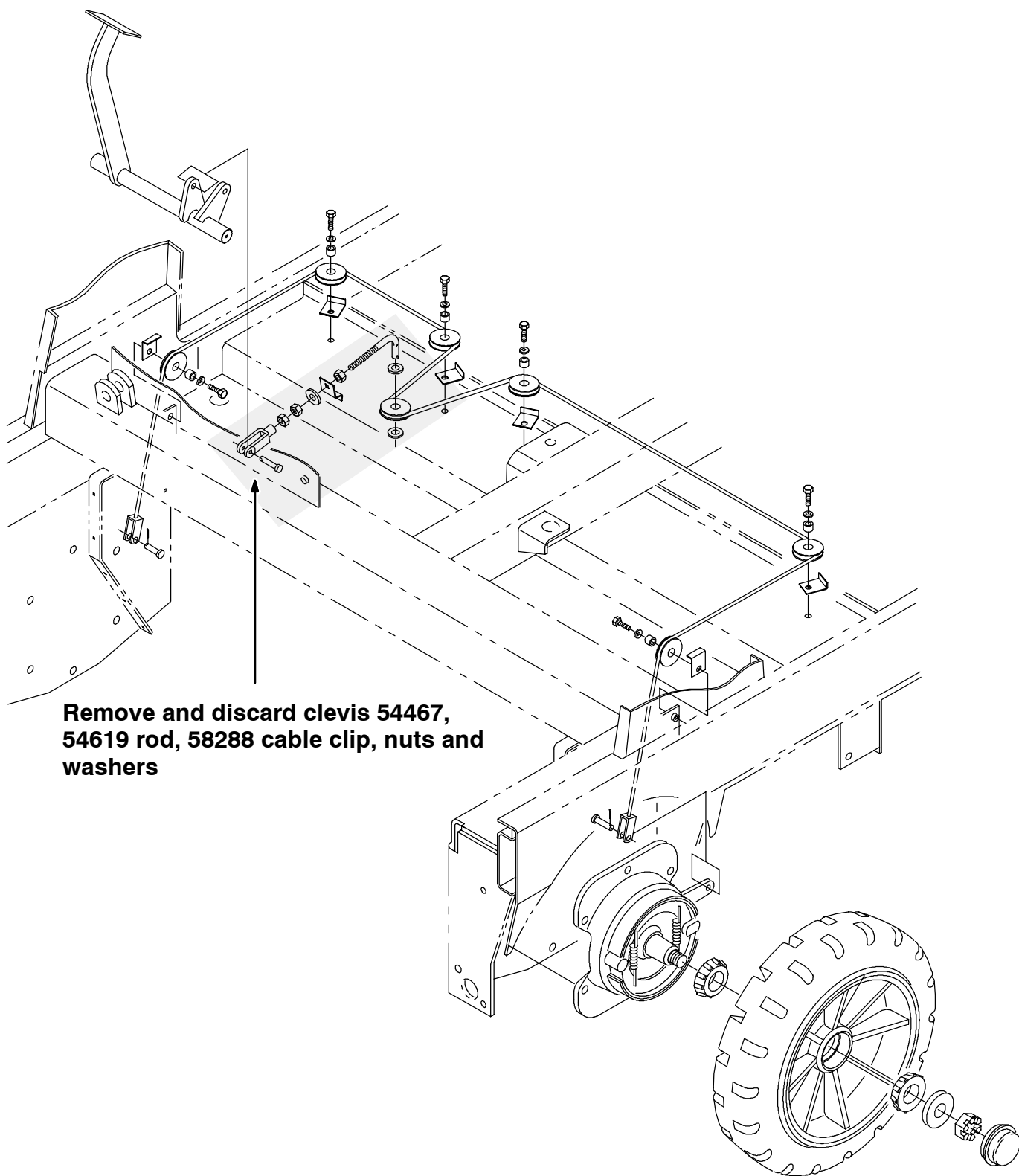


FIG. 2 - OLD BRAKE CABLE CONNECTOR REMOVAL

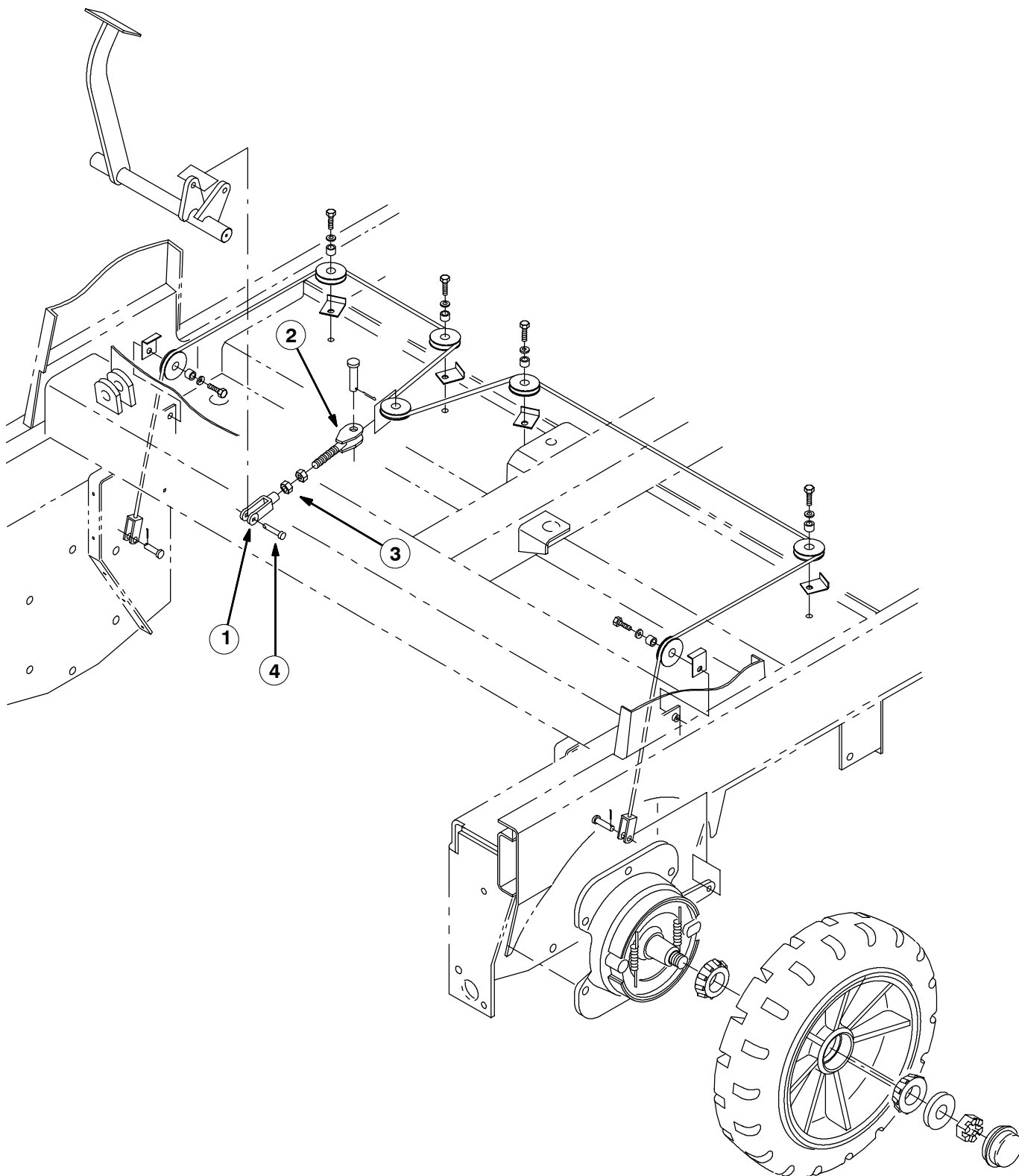


FIG. 3 - BRAKE CABLE CONNECTOR INSTALLATION

BILL OF MATERIALS FOR BRAKE CABLE CONNECTOR KIT, 374711

Ref.	TENNANT Part No.	Description	Qty.
1	374710	Clevis, adj, 0.38 pin, 0.50-20	1
2	71373	Yoke, wldt, adj, 0.50 pin 0.50-20	1
3	48985	Nut, hex, jam, 0.50-20	1
4	58078	Pin, clevis, 0.50 D X 1.25L	1

TENNANT COMPANY
P. O. Box 1452
Minneapolis, MN 55440-1452