



INSTRUCTION BULLETIN

No. 340499
Machine: 8200/8210
Published: 03-2005
Rev: 02

NOTE: DO NOT DISCARD the Parts List from the Instruction Bulletin. Place the Parts List in the appropriate place in the machine manual for future reference. Retaining the Parts List will make it easier to reorder individual parts and will save the cost of ordering an entire kit.

NOTE: Numbers in parenthesis () are reference numbers for parts listed in Bill of Materials.

Installation instructions for kit number 375223

SYNOPSIS:

This kit contains the parts needed to install a pintle arm kit on 8200/8210 machines. Please follow step-by-step instructions.

SPECIAL TOOLS / CONSIDERATIONS: NONE

(Estimated time to complete: 1 hour)

PREPARATION:

(Refer to FIG. 1, 2 and 3)

FOR SAFETY: Before leaving or servicing machine, stop on level surface and set parking brake. Then turn off machine and remove key.

1. Open the engine cover and the side door on the machine.
2. Disconnect battery cables from the batteries.



WARNING: Always disconnect battery cables from machine before working on electrical components.

INSTALLATION:

(Refer to FIG. 1, 2 and 3)

1. Locate the hydraulic pump linkage group on the side of the hydraulic propel pump.
2. Disconnect the shock absorber from the pintle lever. Set the mounting hardware aside.

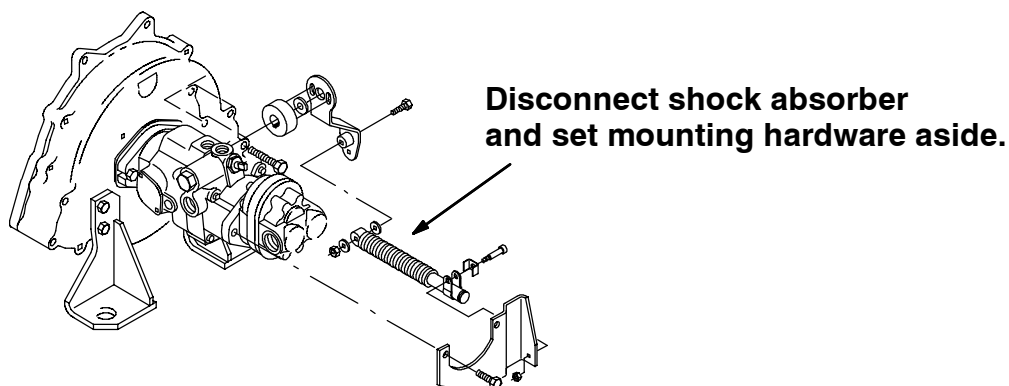


FIG. 1 - DISCONNECT SHOCK ABSORBER

3. Cut and remove the wire tie securing the rod-end and bracket on the end of the push pull cable. (Refer to FIG. 2)
4. Disconnect the push-pull cable from the bottom of the pintle lever. Discard the mounting bolt, spacers, and lock nut. (Refer to FIG. 2)
5. Remove and discard the pintle lever and mounting hardware from the hydraulic propel pump. (Refer to FIG. 2)

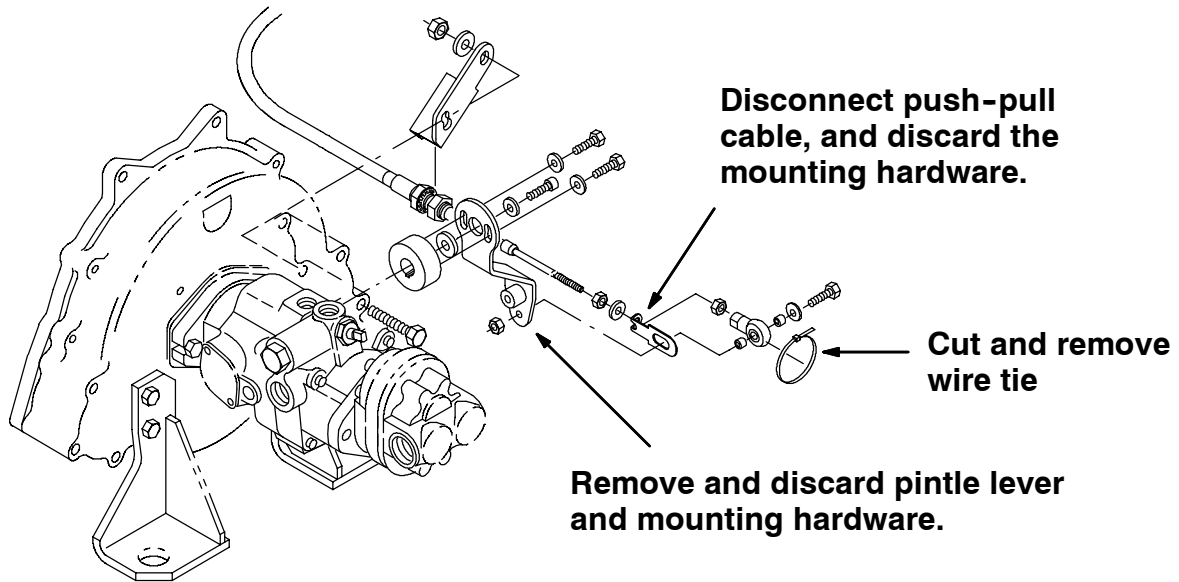


FIG. 2 - DISCONNECT PUSH PULL CABLE

6. Install new pintle lever (1) with washers (3) and bolts (2) using adhesive (5). (Refer to FIG. 3)
7. Remove the rod end from the cable only if there is a problem with it (i.e. the rod end is worn or loose on the cable). Note the thread engagement before removal. Install the new rod end (8) and safety clip (6).
8. Apply adhesive (5) into the rod end threads and reassemble the rod end (8) to the original position. Tighten the jam nut.
9. Secure the rod-end and bracket, on the end of the push pull cable with a wire tie (4). (Refer to FIG. 3)
10. Connect the push-pull cable to the bottom of the new pintle lever (1) with the new spacers (7) and mounting hardware (9), (11) and (10). (Refer to FIG. 3)
11. Connect the shock absorber to the new pintle lever (1) with the set aside mounting hardware. (Refer to FIG. 3)
12. Reconnect the battery cables to the batteries.
13. Jack up the rear of the machine so only the rear tire is raised.

FOR SAFETY: When servicing machine, block machine tires before jacking machine up.

**FOR SAFETY: When servicing machine, jack machine up at designated locations only.
Block machine up with jack stands.**

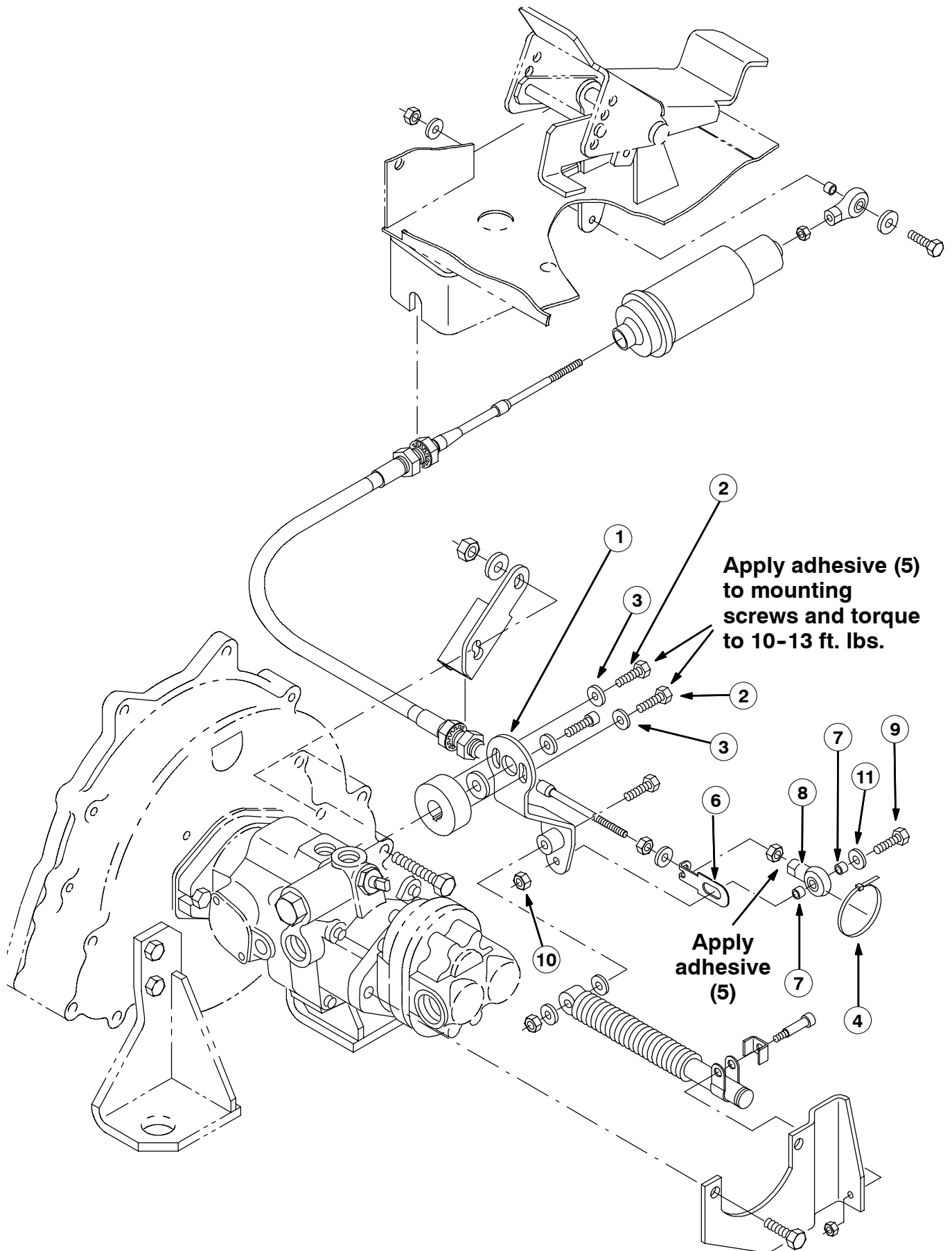


FIG. 3 - NEW PINTLE LEVER INSTALLATION

14. Start the machine, and check the rear tire for neutral adjustment.
 15. Make any **rough** neutral adjustments with the hydraulic pump cam.

If the wheel is rotating forward: turn the socket head screw clockwise.

If the wheel is rotating backwards: turn the socket head screw counterclockwise.
 16. To make any **fine** neutral adjustments: loosen the jam nut and rotate the hydroback clockwise or counterclockwise. Tighten jam nut once adjustments are made.
 17. Turn off the machine.
 18. Lower the rear of the machine off of the jacks.
 19. Remove one of the new pintle lever mounting bolts (3), and apply a small amount of adhesive (5) into the hub tapped hole. Replace the bolt and washer. Repeat the process for the other bolt.
- NOTE: Grade 8 torque 10-13 ft lbs.*
20. Close the engine cover and side door on the machine.
 21. Turn the machine power on, and check the hydraulic linkage for proper operation.

Bill of Materials for Kit, Pintle Arm 8200/8210-375223

Ref.	TENNANT Part No.	Description	Qty.
1	364258	Arm Wldt, Coupling, Pintle	1
2	16931	Screw, Hex, M8 X 1.25 X 20, 8.8	2
3	41186	Washer, Belleville, 0.31	2
4	49266	Tie, Cable, Nyl, 07.3L .19W 1.8 Max D	1
5	32676	Adhesive, Thread, [242 BLU 0.5ml]	1
6	83887	Bracket, Clip, Safety	1
7	65441	Tube, 00.38D 00.26B 00.3L Stl Plt	2
8	68866	Rod-End, .25-28 RH Fem 0.25B [Teflon]	1
9	25049	Screw, Hex, .25-20 X 1.75, 5	1
10	32981	Nut, Hex, Lock, .25-20, NL	1
11	32490	Washer, Flat, 0.25 Std	1

TENNANT COMPANY
P. O. Box 1452
Minneapolis, MN 55440-1452