



# INSTRUCTION BULLETIN

No. 340496  
Machine: 6550 Diesel LH  
Published: 1-02  
Rev. 01

**NOTE: DO NOT DISCARD the Parts List from the Instruction Bulletin. Place the Parts List in the appropriate place in your machine manual for future reference. Retaining the Parts List will make it easier to reorder individual parts and will save you the cost of ordering an entire kit.**

*NOTE: Numbers in parenthesis ( ) are reference numbers for parts listed in Bill of Materials.*

Installation instructions for kit number 398351

## **SYNOPSIS / PROBLEM:**

This kit contains the parts needed to install/replace a flexible exhaust pipe kit on the model 6500 or 6550 Diesel left hand sweeper/scrubber.

Please follow step-by-step instructions.

## **SPECIAL TOOLS / CONSIDERATIONS: HOIST or JACK**

(Estimated time to complete: 1 hour)

## **PREPARATION:**

(Refer to FIG. 1 thru 7)

**FOR SAFETY: Before leaving or servicing machine, stop on level surface and set parking brake. Then turn off machine and remove key.**

1. Disconnect battery cables from the machine.



**WARNING: Always disconnect battery cables from machine before working on electrical components.**

2. Lift or jack the machine up high enough to drill into the lower frame. Place the jack stands under the machine and check the machine stability before working under the machine.

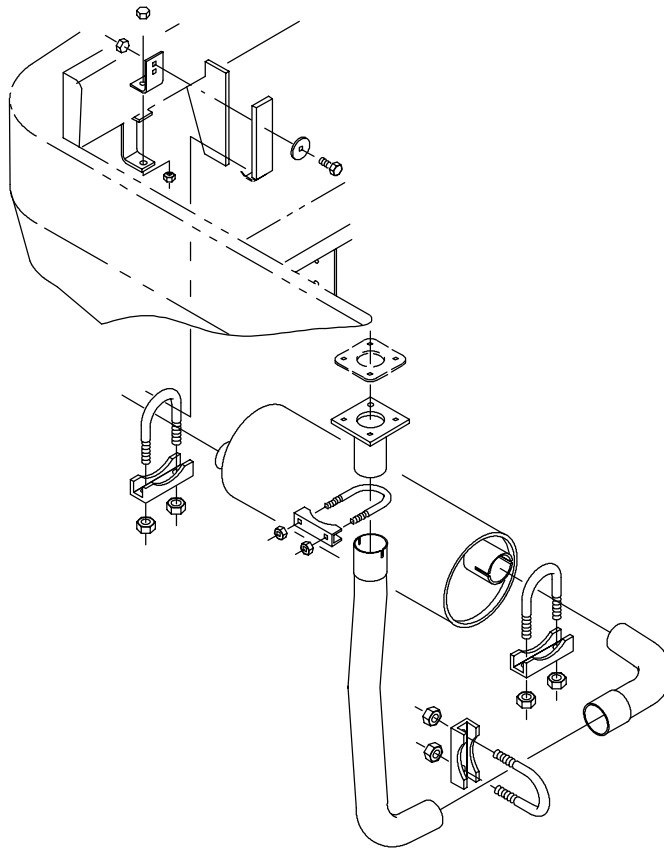
**FOR SAFETY: When servicing machine, block machine tires before jacking machine up. Jack machine up at designated locations only. Block machine up with jack stands.**

**FOR SAFETY: When servicing machine, use hoist or jack that will support the weight of the machine.**

## **INSTALLATION:**

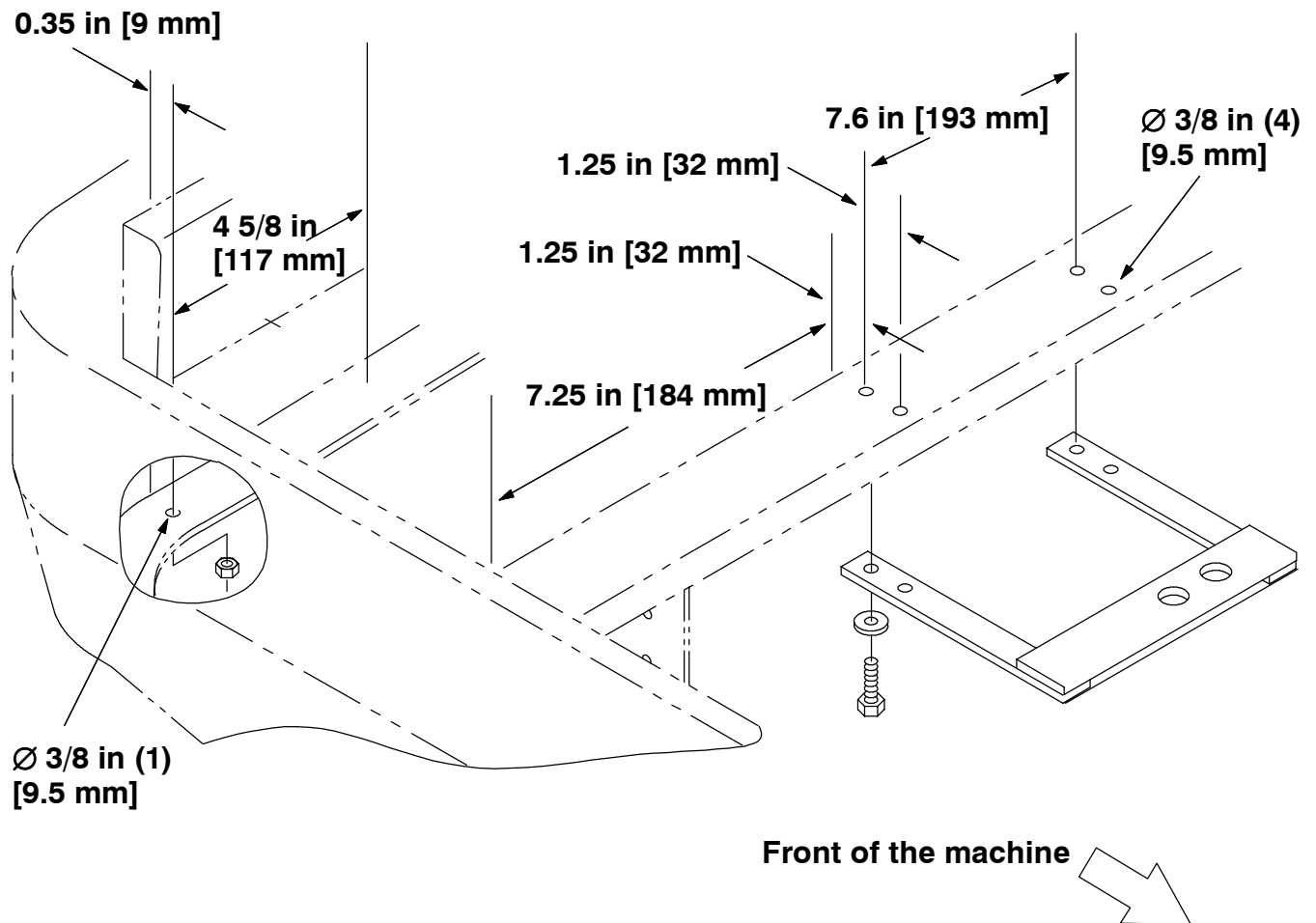
(Refer to FIG. 1 thru 4)

1. Remove old exhaust system, from exhaust pipe clamp at muffler outlet to clamp at the engine exhaust manifold outlet (including angle 374676 on machines with serial numbers greater than 8488. On older machines, remove bracket 374677 and isolator 54274. Retain strap hanger at muffler outlet. (Refer to FIG. 1)



**FIG. 1 - OLD EXHAUST SYSTEM REMOVAL**

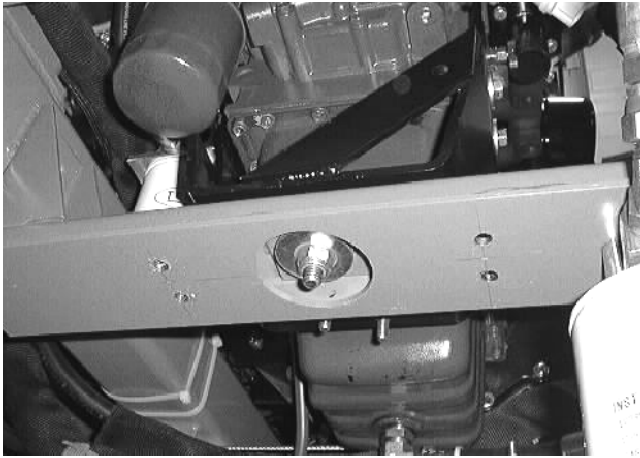
2. Locate the frame crossmember that supports the engine. Measure 7.25 in [184 mm] (to the left ) from the main frame side along the crossmember, and 1.25 in [32 mm] forward. (Refer to FIG. 2)
3. Check for objects (hoses, wires ect.) in the way before drilling.
4. Drill a 3/8 in [9.5 mm] dia. hole through the engine support crossmember at this location. A second hole should be drilled 1.25 in [32 mm] straight forward of the first. (Refer to FIG. 2 and 3)
5. Drill two more 3/8 in[9.5 mm] dia. holes 7.60 in [193 mm] left (toward the center of the machine) and in line with the first two holes. (Refer to FIG. 2 and 3)



**FIG. 2 - ISOLATOR BRACKET MOUNTING HOLE LOCATIONS**

6. Mount the muffler isolator bracket (3) to the bottom of the crossmember with 4 M8 X 65 mm bolts (10) and washers (8). Snug the bolts, but do not fully tighten. The cross leg of the new part should be below the oil pan on the engine. (Refer to FIG. 2, 4 and 7)
7. Insert the rubber isolators (6) into the top of the new isolator bracket (3). (Refer to FIG. 7)
8. Install the muffler mounting bracket (4) so the bottom side of the top leg rests on the rubber isolators, and the "T" leg is below them. Fasten the muffler mounting bracket (4) with two M8 X 35 mm bolts (7) and four washers (8). Tighten the mounting hardware. (Refer to FIG. 5, 6 and 7)
9. Drill a 3/8 in [9.5 mm] dia. hole in the bottom flange on the rear bumper, locating the hole 0.350 inch from the edge of the bumper flange and 4 5/8 inches from the right hand edge of the taillight mount surface. (Refer to FIG. 2 and 7)
10. Install the new muffler hanger bracket (5) with two M8 X 20 mm bolts and nyloc nuts to attach the bracket to the rear bumper. Tighten the mounting hardware. (Refer to FIG. 7)
11. Install the muffler hanger strap #374691 with a M8 X 25 mm bolt and flat washer. The height of the angle on the hanger strap should be about even with the lower edge of the rear bumper. (Refer to FIG. 7)

12. Install the exhaust pipe (1) to exhaust manifold outlet with a 1.62 in diameter muffler clamp (11). Do not fully tighten the clamp. The pipe should remain loose until it is aligned with the muffler. (Refer to FIG. 7)
13. Install the pipe elbow (2) to the end of the vertical exhaust pipe (1). Secure the pipes with a 1.62 dia. muffler clamp (11). Do not fully tighten the clamp at this time. (Refer to FIG. 8)
14. Install the muffler by suspending it from the rear strap hanger and the "T" leg of the bracket with two 1.62 in dia. muffler clamps (11). Insert the end of the exhaust pipe elbow (2) into the muffler a minimum of 1.0 inch. (Refer to FIG. 7)
15. Tighten the three mounting bolts holding the plate to the frame. (Refer to FIG. 7)
16. Make the final alignment of the exhaust pipe (1) and muffler and tighten the muffler clamps (11).



**FIG. 3**



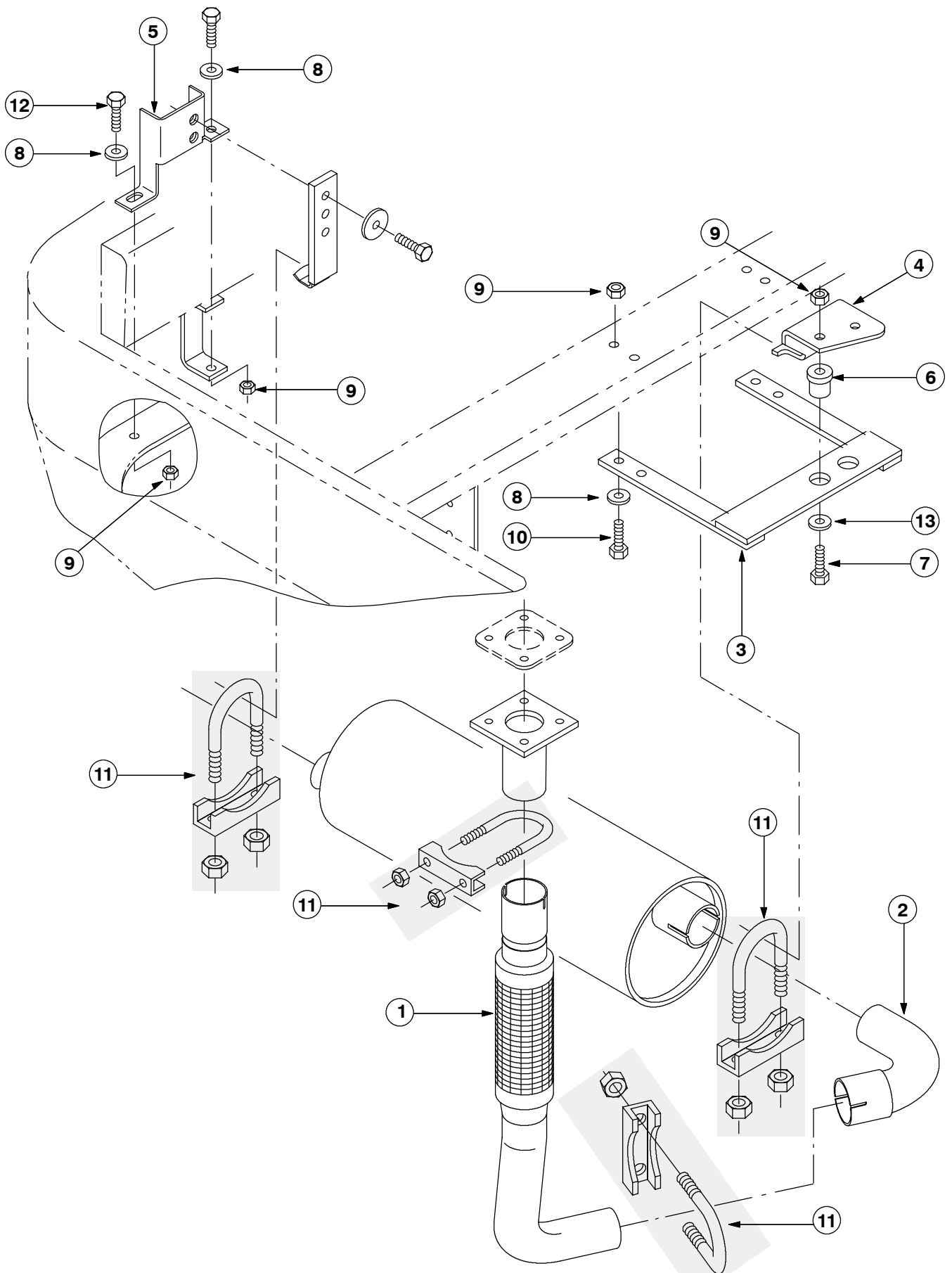
**FIG. 4**



**FIG. 5**



**FIG. 6**



**FIG. 7 - NEW FLEXIBLE EXHAUST KIT INSTALLATION**

**BILL OF MATERIALS FOR FLEXIBLE EXHAUST KIT, DLH, 398351**

<b>Ref.</b>	<b>TENNANT Part No.</b>	<b>Description</b>	<b>Qty.</b>
1	369782	Tube wldt, exhaust, 1.6D w/flex LH	1
2	369783	Tube, exhaust, [E 66]	1
3	374731	Bracket wldt, mtg, isolator, muffler	1
4	374730	Bracket, mtg, muffler, [6550 DHL]	1
5	374734	Bracket, mtg, hanger, muffler	1
6	54274	Isolator, vib, bshg, 1.1D 0.6L 0.4B 0.78H	2
7	06955	Screw, hex, M08 X 1.25 X 35, 8.8	2
8	39349	Washer, flt, 0.31 SAE	6
9	08709	Nut, hex, lock, M08 X 1.25, NL	8
10	87531	Screw, Hex, M08 X 1.25 X 65, 8.8	4
11	24012	Clamp, muffler, 1.62D	4
12	16931	Screw, Hex, M08 X 1.25 X 20, 8.8	1
13	32491	Washer, flt, 0.31 std	2

TENNANT COMPANY  
P. O. Box 1452  
Minneapolis, MN 55440-1452