



# INSTRUCTION BULLETIN

No. 340491  
Machine: 7300,8300  
Published: 7-01/00  
System: SCRUBBING

**NOTE: DO NOT DISCARD the Parts List from the Instruction Bulletin. Place the Parts List in the appropriate place in your machine manual for future reference. Retaining the Parts List will make it easier to reorder individual parts and will save you the cost of ordering an entire kit.**

*NOTE: Numbers in parenthesis ( ) are reference numbers for parts listed in Bill of Materials.*

Installation instructions for kit number 387583

## **SYNOPSIS / PROBLEM:**

This kit contains the parts needed to install a squeegee mounting ring kit on the model sweeper/scrubber.

Please follow step-by-step instructions.

## **SPECIAL TOOLS / CONSIDERATIONS: NONE**

(Estimated time to complete: 1 hour)

## **PREPARATION:**

(Refer to FIG. 1, 2 and 3)

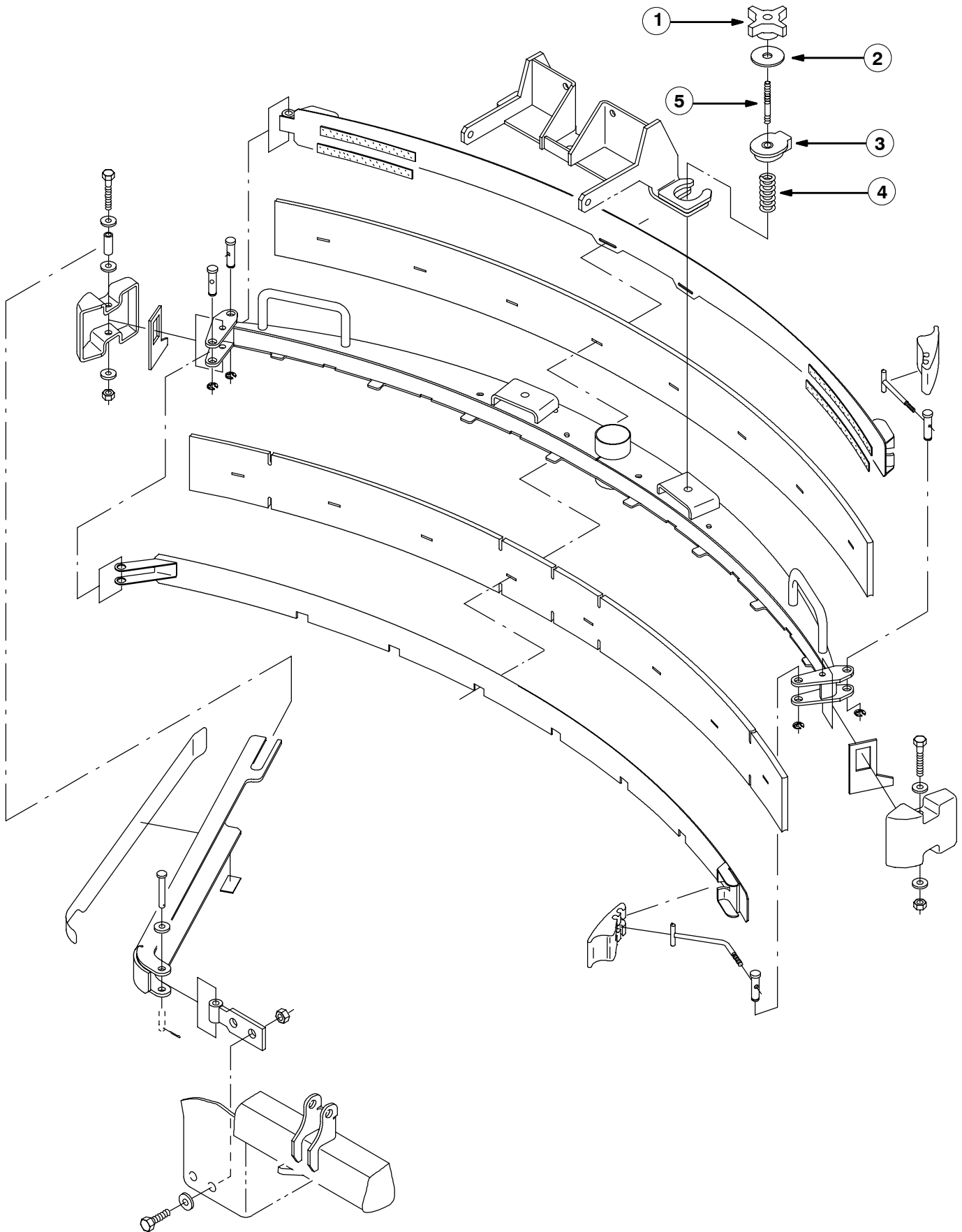
1. Turn the machine power on. Lower the rear squeegee assembly until the rear squeegee is 1/4 inch or less from the ground. Turn the machine power off.

**FOR SAFETY: Before leaving or servicing machine, stop on level surface and set parking brake. Then turn off machine and remove key.**

## **INSTALLATION:**

(Refer to FIG. 1, 2 and 3)

1. Disconnect and remove the old squeegee securing knobs, washers and studs. Discard old mounting hardware.
2. Position the new mounting rings (3) in the squeegee lift bracket. (Refer to FIG. 1)
3. Mount the squeegee to the squeegee lift bracket with new star knobs (1), washers (2), studs (5) and compression springs (4). (Refer to FIG. 1)
4. Tighten the new squeegee mounting hardware.
5. Turn the machine power on, and check the squeegee for proper operation.



**FIG. 1 - SQUEEGEE RING REPAIR KIT, 387583**

**BILL OF MATERIALS FOR SQUEEGEE MOUNTING RING KIT, 387583**

<b>Ref.</b>	<b>TENNANT Part No.</b>	<b>Description</b>	<b>Qty.</b>
1	370100	Knob, star, 2.8 4 ear 1.1L 0.31-18 plstc	2
2	04414	Washer, 0.53B 1.88D 0.12, stl, pl	2
3	387433	Ring, mtg, sqge, 0.50L	2
4	387500	Spring, cmpr, 0.87OD 0.042 wir 2.0L	2
5	387237	Stud, 0.31-18 2.75L M8 X 1.25 Ss	1
6	387525	Label, sqge	1

TENNANT COMPANY  
P. O. Box 1452  
Minneapolis, MN 55440-1452