



INSTRUCTION BULLETIN

No. 340452
Machine: 7100
Published: 11-00/00
System: OPTIONS

NOTE: DO NOT DISCARD the Parts List from the Instruction Bulletin. Place the Parts List in the appropriate place in your machine manual for future reference. Retaining the Parts List will make it easier to reorder individual parts and will save you the cost of ordering an entire kit.

NOTE: Numbers in parenthesis () are reference numbers for parts listed in Bill of Materials.

Installation instructions for kit numbers 390846 and 390833

SYNOPSIS / PROBLEM:

This kit contains the parts needed to install a rollout battery pack and box assembly on the model 7100 scrubber.

Please follow step-by-step instructions.

SPECIAL TOOLS / CONSIDERATIONS: NONE

(Estimated time to complete: 1 hour)

PREPARATION:

(Refer to FIG. 1, 2 and 3)

FOR SAFETY: Before leaving or servicing machine, stop on level surface and set parking brake. Then turn off machine and remove key.

1. Disconnect battery cables from machine.



WARNING: Always disconnect battery cables from machine before working on electrical components.

NEW HOUSING INSTALLATION:

(Refer to FIG. 1)

1. Lay the flat, back side of the the battery latch angle (2) against the side of the battery housing (1) that has the mounting slot. Align the slots in the battery latch angle (2) and the battery housing (1), with the 75° angle towards the top of the battery housing (1).
(Refer to FIG. 1 and 2)
2. Mount the battery latch angle (2) to the battery housing (1) with the 2 stud weldment (6), washers (4), lock nut (5) and threaded knob (3). Tighten the hardware enough to allow the battery latch angle (2) to slide up and down easily. (Refer to FIG. 1 and 2)

NOTE: Before installing batteries into the battery housing, place the battery housing on a battery rollout cart or install it in the machine for easy maneuvering.

3. Once the battery housing is installed in the machine, secure the housing in place; slide the battery latch angle down into the slot in the machine frame, and tighten the securing knob (3).

NEW BATTERY PACK INSTALLATION:

(Refer to FIG. 1, 2 and 3)

1. Position the six batteries (15) into the battery housing (1) in the configuration shown in figures 2 and 3. (Refer to FIG. 2 and 3)
2. Place a battery terminal cover (11) over each battery terminal. (Refer to FIG. 2)
3. Slide a 90° cover boot (12) over each end of each battery cable. (Refer to FIG. 2)
4. Using the configuration shown in figures 2 and 3, connect the battery terminals using the battery cables (7) and (8), washers (14) and hex nuts (13). Slide the battery connector covers over the battery terminals. (Refer to FIG. 2 and 3)
5. Connect the end of the battery cable assembly (9) to the machine connector (20). (Refer to FIG. 2)
6. Check all of the battery and cable connections. Lower the operator seat.
7. Turn the machine power on. Check the battery charge level on the battery discharge indicator before operating machine. Charge the battery pack if necessary.

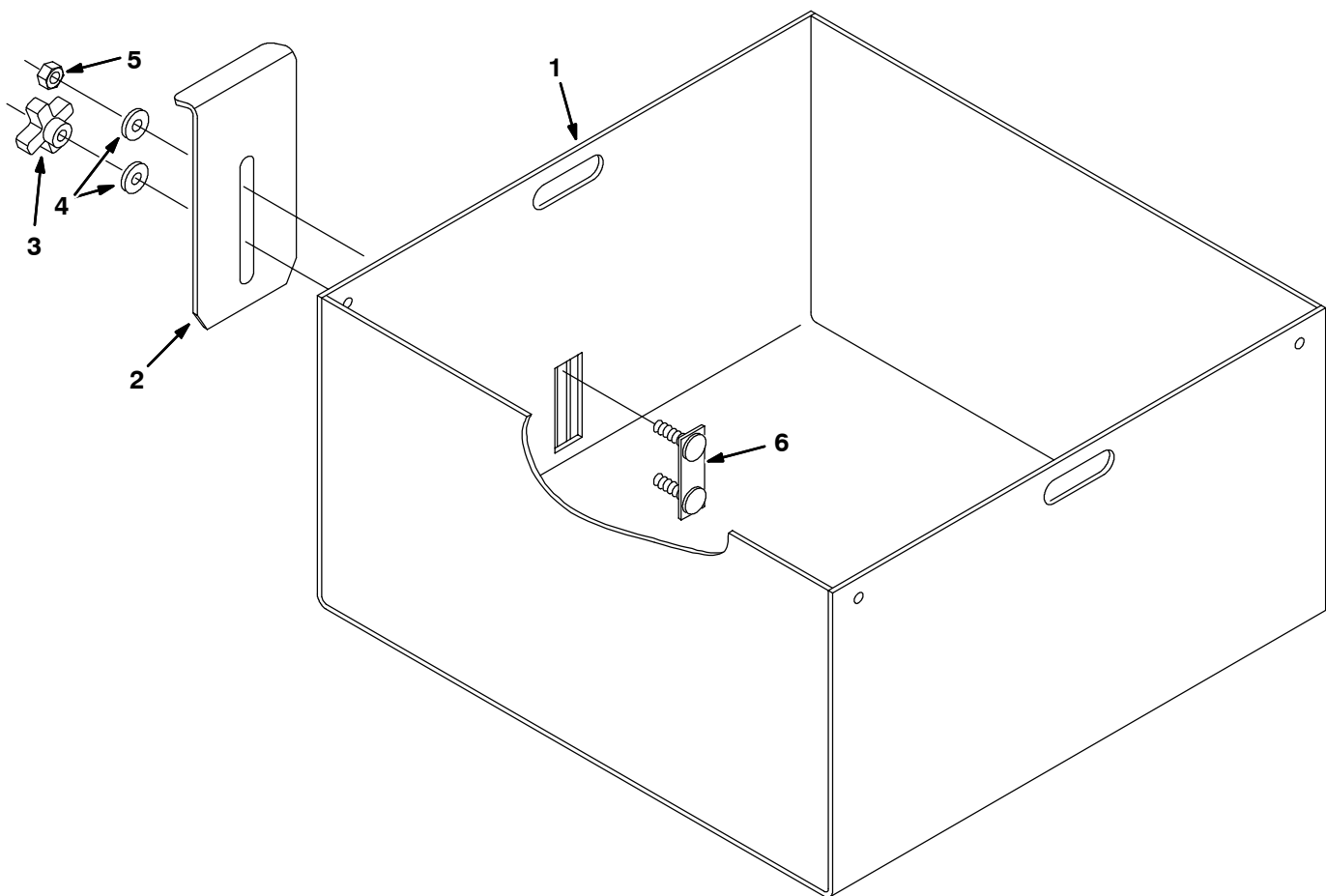


FIG. 1 - ROLLOUT BATTERY EXTRA CASE KIT

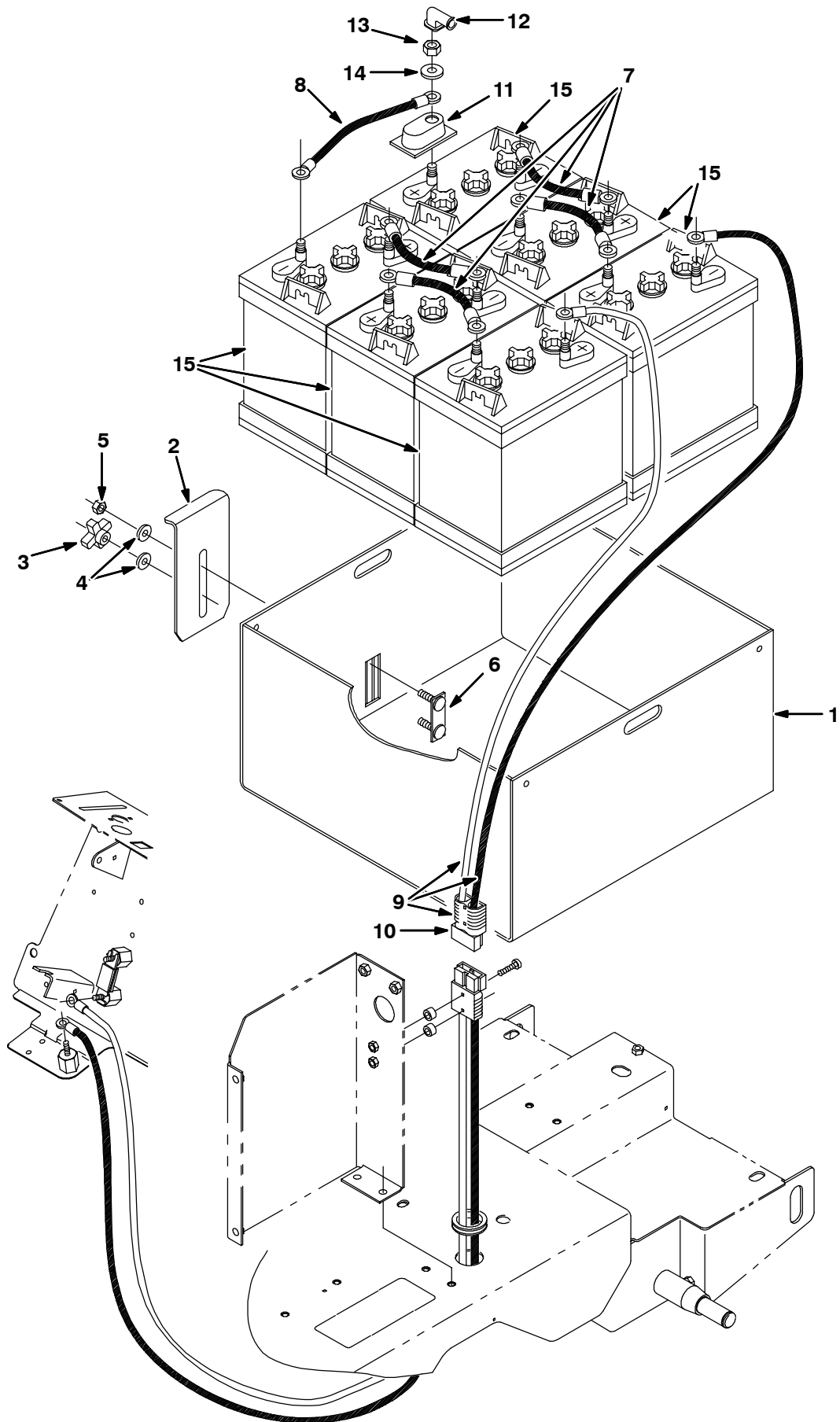


FIG. 2 - ROLLOUT BATTERY EXTRA CASE KIT 390833

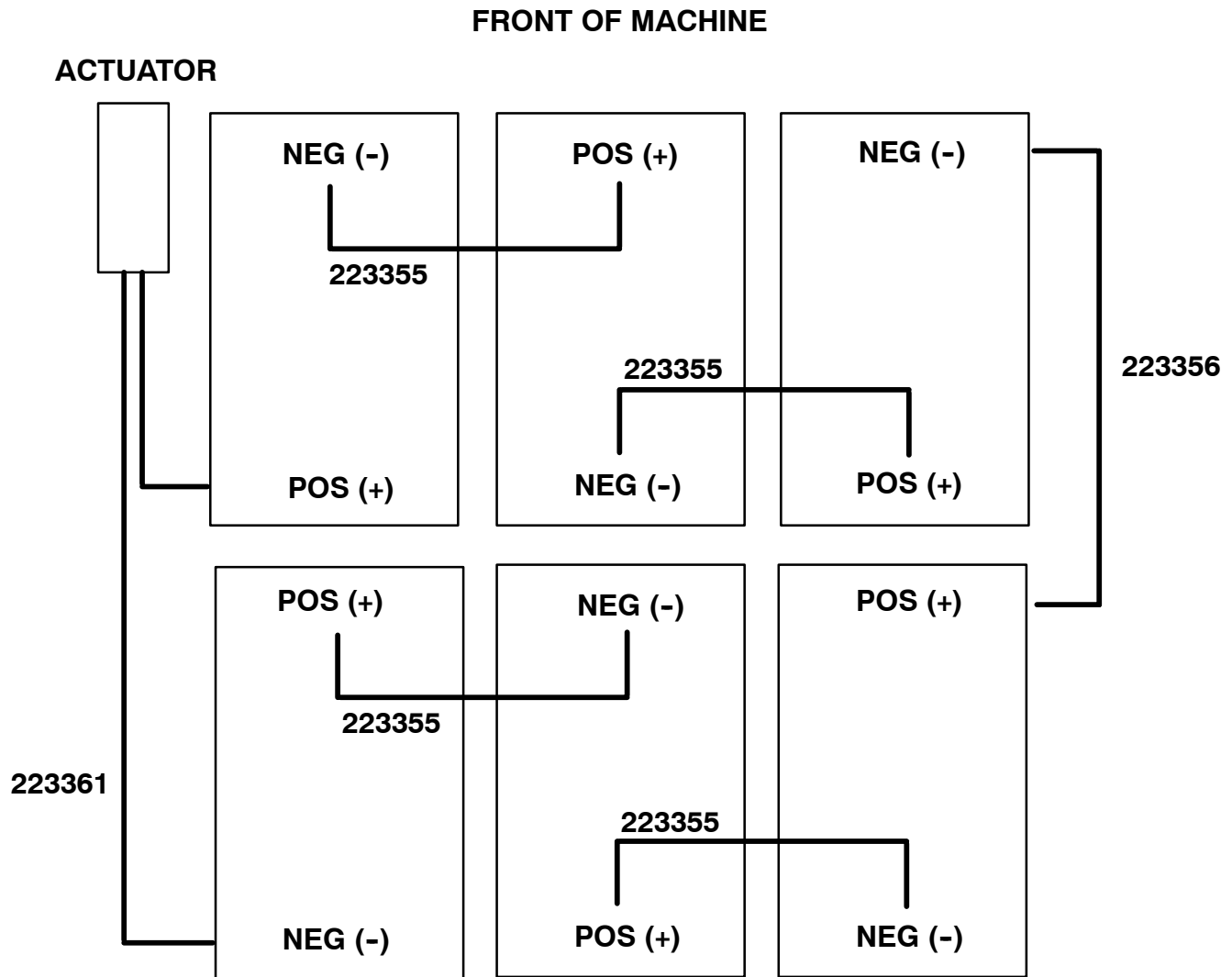


FIG. 3 - ROLLOUT BATTERY CABLE CONFIGURATION

BILL OF MATERIALS FOR ROLLOUT BATTERY CASE W/O BATTERY KIT 390846

Ref.	TENNANT Part No.	Description	Qty.
1	391149	Housing wldt, battery, R/O	1
2	391150	Angle, latch, battery, R/O	1
3	390955	Knob, 2.0d 1.0h 0.38-16 thread alm	1
4	41187	Washer, belleville, 0.38	2
5	59156	Nut, hex, lock, 0.38-16, NI, Ss	1
6	390956	Stud wldt, thrd, 2.38-16 1.50L	1

BILL OF MATERIALS FOR ROLLOUT BATTERY EXTRA CASE W/ BATTERY KIT 390833

Ref.	TENNANT Part No.	Description	Qty.
1	391149	Housing wldt, battery, R/O	1
2	391150	Angle, latch, battery, R/O	1
3	390955	Knob, 2.0d 1.0h 0.38-16 thread alm	1
4	41187	Washer, belleville, 0.38	2
5	59156	Nut, hex, lock, 0.38-16, NI, Ss	1
6	390956	Stud wldt, thrd, 2.38-16 1.50L	1
7	223355	Wire, 04ga 08.01 Blk 0.34ring/0.34ring	4
8	223356	Wire, 04ga 12.01 Blk 0.34ring/0.34ring	1
9	223361	Cable assy, battery, 04ga 2,175a	1
10	22892	Connector, Anderson, 175a, gray	1
11	45962	Cover, terminal, battery, pye	12
12	02076	Boot, 90° 0.50d 0.57d X 0.84	12
13	87435	Nut, hex, flexlock, 0.31-18	12
14	01685	Washer, flt, 0.31 Ss	12
15	390825	Battery, 06vdc, 244ah, wet	6

TENNANT COMPANY
P. O. Box 1452
Minneapolis, MN 55440-1452