



INSTRUCTION BULLETIN

No. 340436
Machine: 7300 / 8300
Published: 07-2015
Rev. 02

NOTE: DO NOT DISCARD the Parts List from the Instruction Bulletin. Place the Parts List in the appropriate place in the machine manual for future reference. Retaining the Parts List will make it easier to reorder individual parts and will save the cost of ordering an entire kit.

NOTE: Numbers in parenthesis () are reference numbers for parts listed in Bill of Materials.

Installation instructions for **kit number 387300 / 9006948**

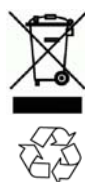
SYNOPSIS:

This kit contains the parts needed to install a revolving light kit on 7300 / 8300 machines equipped with the optional overhead guard.

Please follow step-by-step instructions.

SPECIAL TOOLS / CONSIDERATIONS: NONE

(Estimated time to complete: 1 hour)



PROTECT THE ENVIRONMENT

Please dispose of packaging materials, used machine components such as batteries and fluids in an environmentally safe way according to local waste disposal regulations.

Always remember to recycle.

PREPARATION:

1. Park the machine on a clean level surface, turn off the machine, remove the key, and set the parking brake.

FOR SAFETY: Before leaving or servicing machine, stop on level surface, turn off machine, and remove key.

2. Disconnect the battery cables from the batteries.



WARNING: Always disconnect battery cables from machine before working on electrical components.

INSTALLATION:

1. Connect the warning light harness (7) to the revolving light (1). (Fig. 4 / Fig. 5)
2. Insert the rubber grommet (6) into the 0.50 in. hole in the overhead guard. (Fig. 4)
3. Route the warning light harness (7) down through the grommet (6).
4. Use the hardware included with the revolving light (1) to install the revolving light onto the overhead guard. (Fig. 4)
5. Use four hex screws (3), four flat washers (4), and four hex nuts (5) to install the light guard (2) onto the overhead guard. (Fig. 4)
6. Cut a 5.5 in. piece, 18 in. piece, and 20 in. piece from the vinyl duct (8).

7. Install the three pieces of vinyl duct (8) cut in the previous step onto the overhead guard. (Fig. 1 / Fig. 2 / Fig. 3 / Fig. 4)

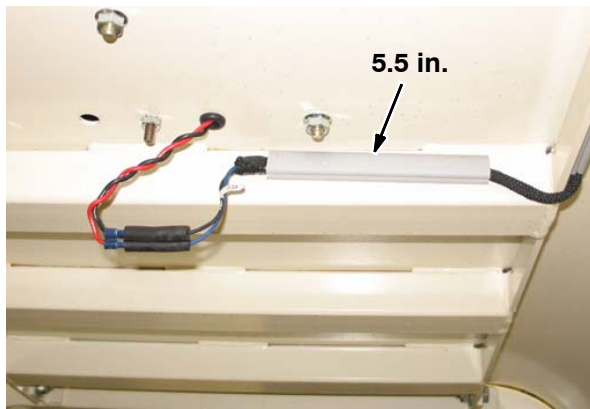


FIG. 1

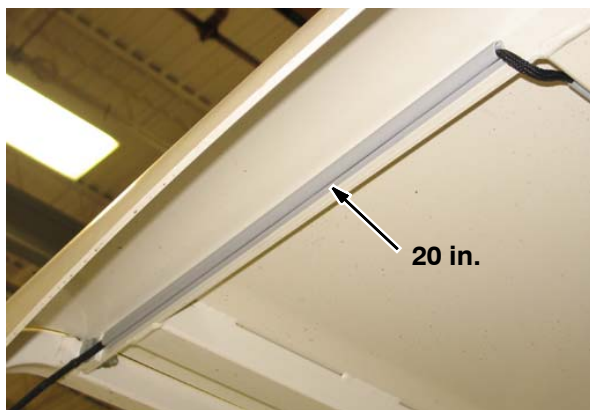


FIG. 2



FIG. 3

8. Route the warning light harness (7) through three pieces of vinyl duct (8) and connect the warning light harness to the main wire harness. (Fig. 1 / Fig. 2 / Fig. 3 / Fig. 4 / Fig. 5.)
9. Disconnect the main wire harness from the operating light switch and remove the switch from the instrument panel. (Fig. 4 / Fig. 6 / Fig. 8)
10. Install the switch (10) into the instrument panel and connect the main wire harness to the switch. (Fig. 4 / Fig. 6 / Fig. 8)
11. If necessary, Install the circuit breaker (9) into the electrical panel. (Fig. 4)
12. Connect the main wire harness to circuit breaker (9) if the existing circuit breaker was replaced in the previous step. (Fig. 4 / Fig. 7 / Fig. 8)
13. Reconnect the battery cables to the batteries.
14. Start the machine and test the overhead guard light.

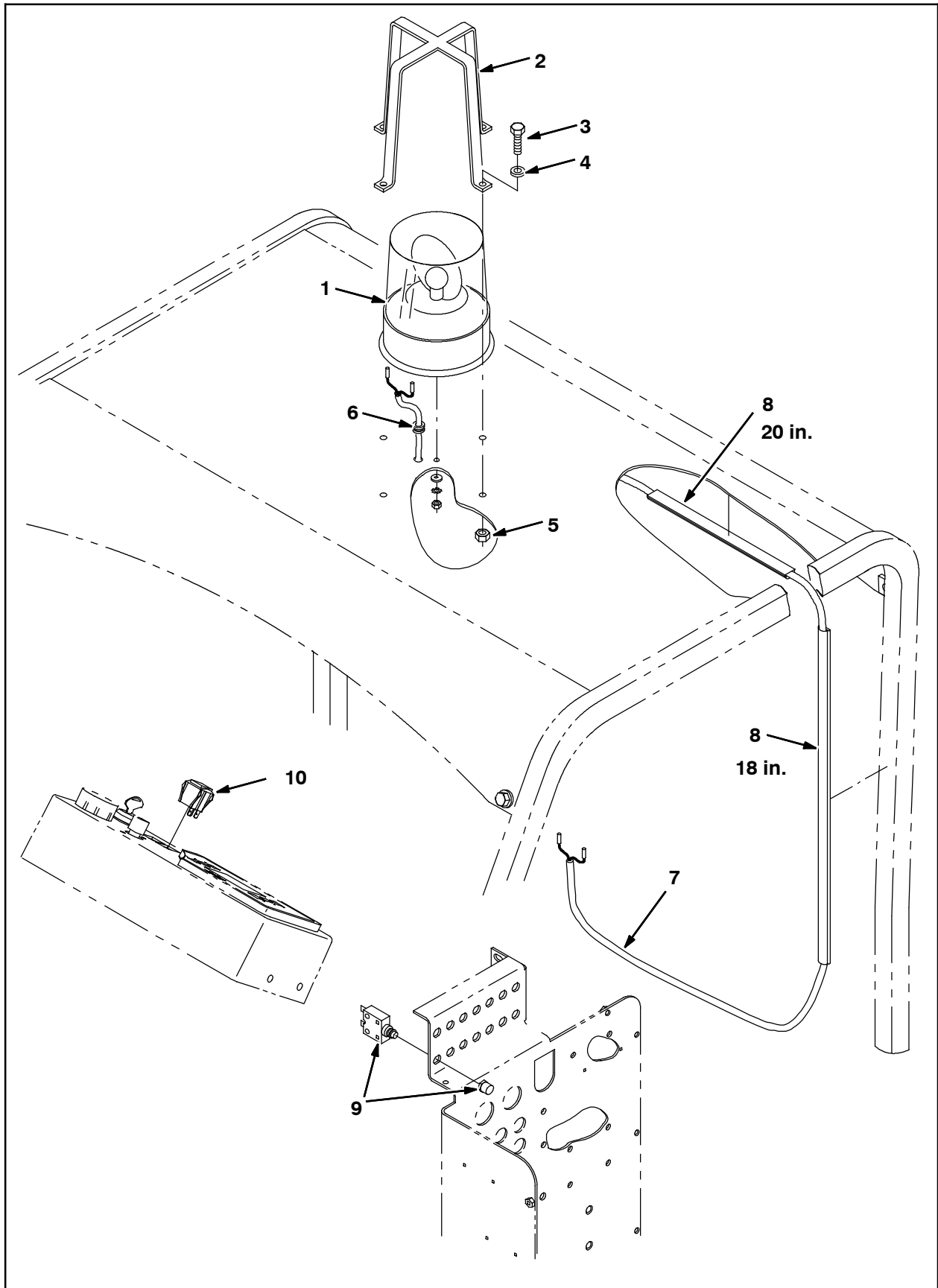


FIG. 4

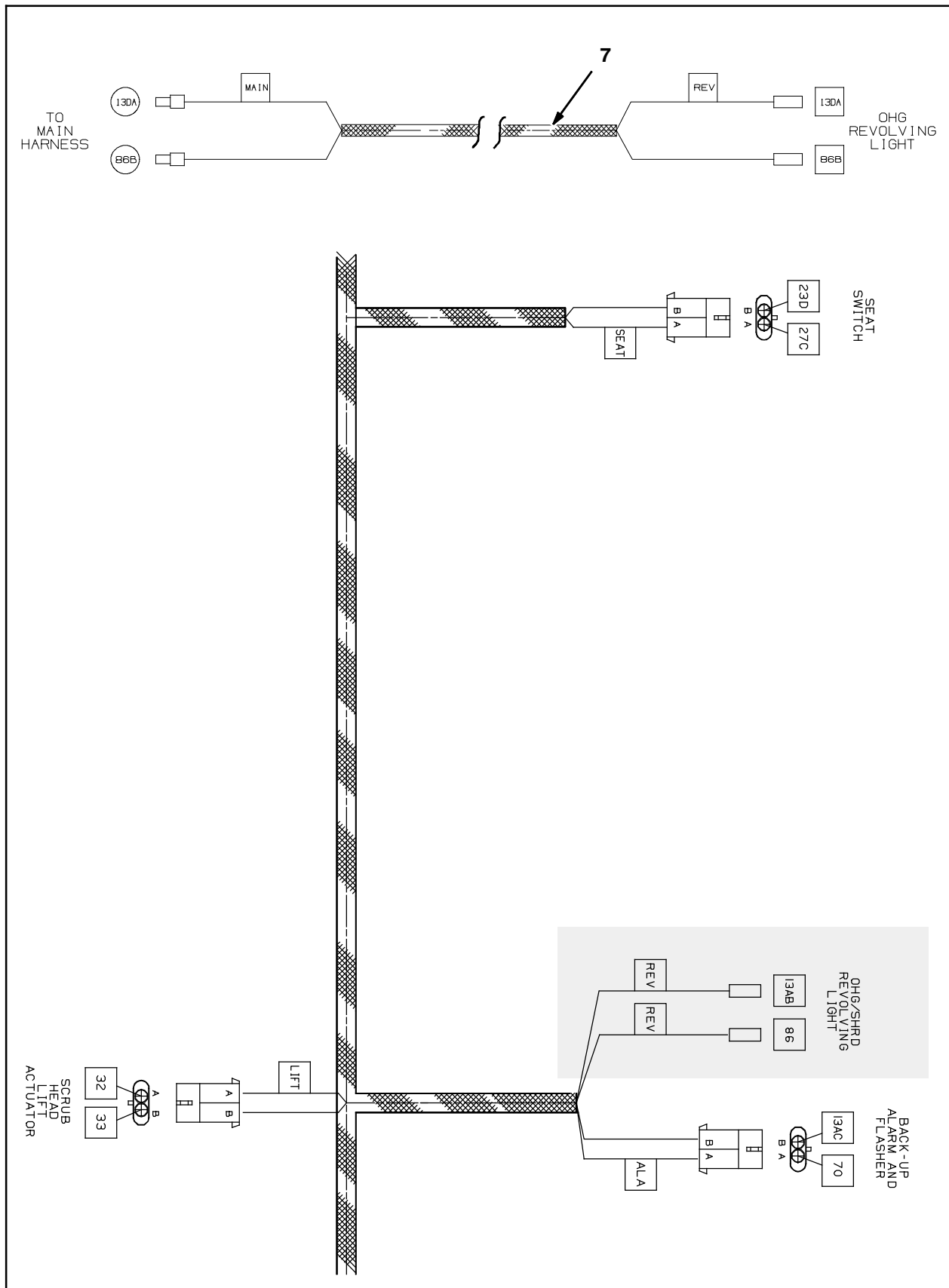


FIG. 5

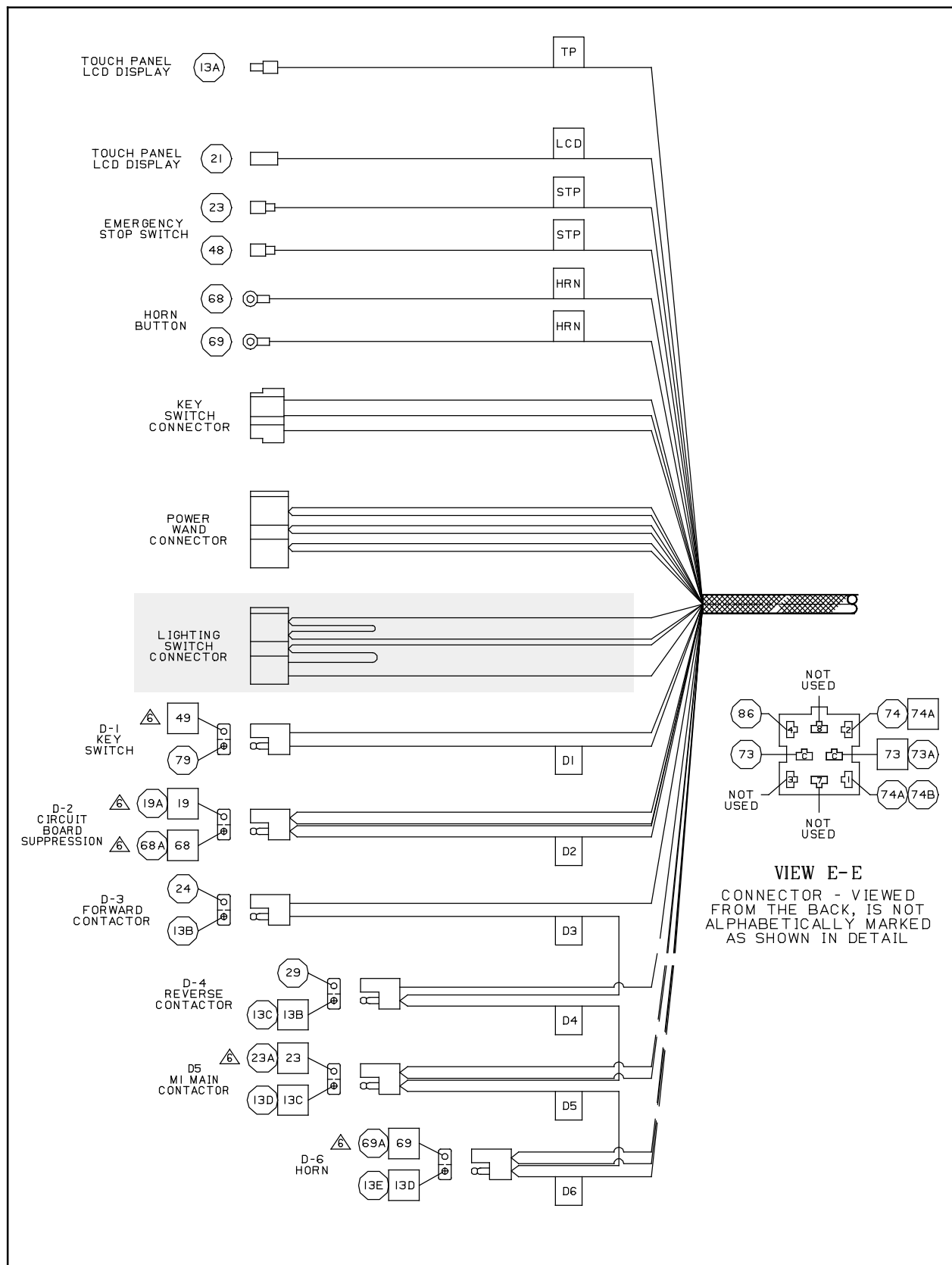


FIG. 6

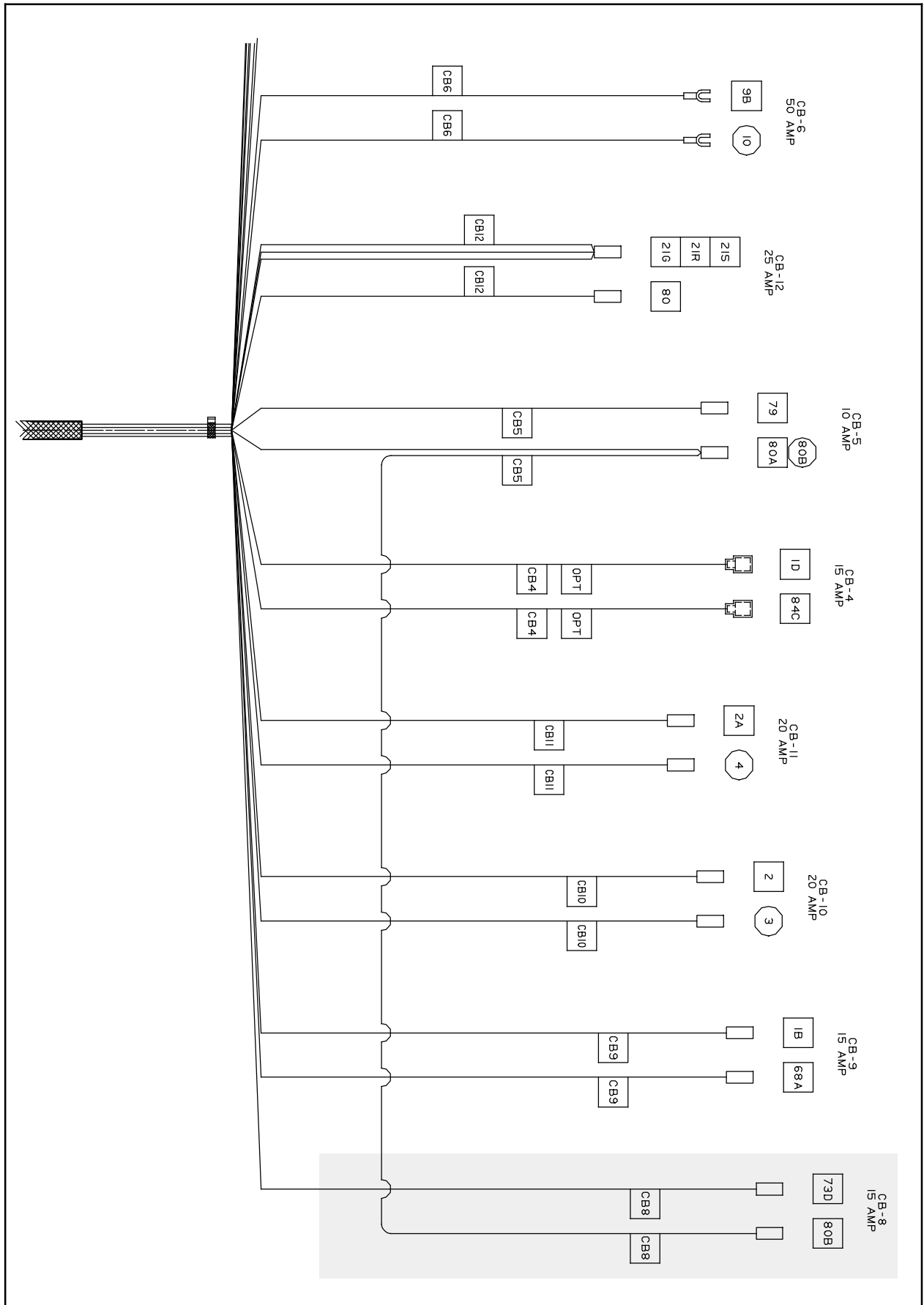


FIG. 7

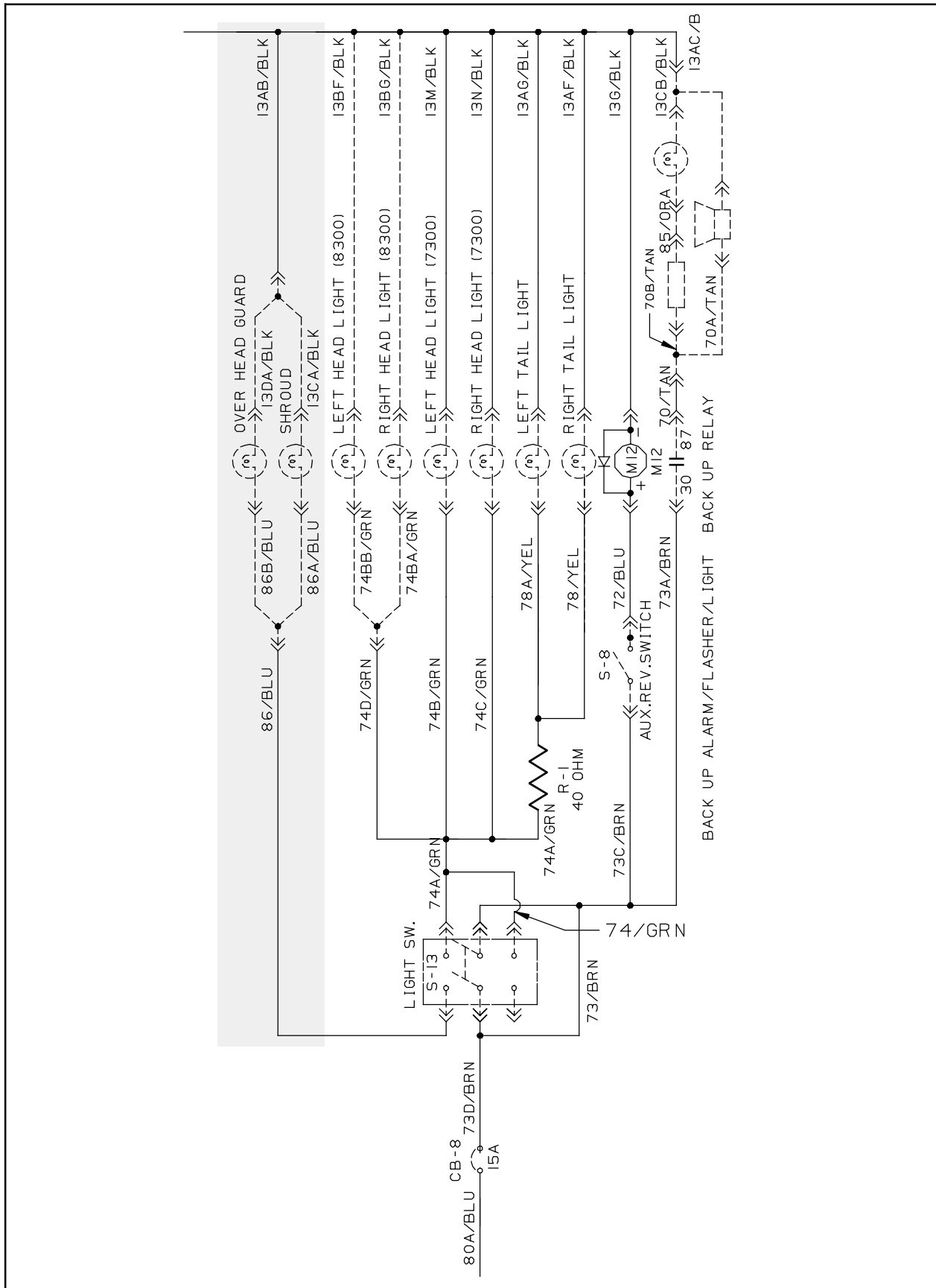


FIG. 8

Bill of Materials for Light Kit, Revl, w/ OHG, CI [7300/8300] - 387300

	Ref.	Tennant Part No.	Description	Qty.
▽		387300	Light Kit, Revl, w/ OHG, CI [7300/8300]	1
▲	1	87709	Light, Revl, 36vdc, Amb, Rwk 44684	1
▲	2	45272	Guard Wldt, Light, Revl/Flsh	1
▲	3	39277	Screw, Hex, M8 X 1.25 X 25, 8.8	4
▲	4	39349	Washer, Flat, 0.31, SAE	4
▲	5	07791	Nut, Hex, Flng, M8 X 1.25	4
▲	6	10632- 12	Grommet, Rbr, 0.38id, F/0.5h, .12 Matl	1
▲	7	386605	Harness, Light, Revl, OHG	1
▲	8	1064050	Duct, Afmkt, Vyl, 0.40 X 0.75 .25d, 04ft	1
▲	9	383722	Circuit Breaker, 15.0a, Resettable	1
▲	10	360520	Switch, Rocker, Spdt, On / Off / On	1

Bill of Materials for Light Kit, Revl, w/ OHG, Iron Gray, CI - 9006948

	Ref.	Tennant Part No.	Description	Qty.
▽		9006948	Light Kit, Revl, w/ OHG, Iron Gray, CI	1
▲	1	87709	Light, Revl, 36vdc, Amb, Rwk 44684	1
▲	2	1056464	Guard Wldt, Light, Revl/Flsh, Iron Gray	1
▲	3	39277	Screw, Hex, M8 X 1.25 X 25, 8.8	4
▲	4	39349	Washer, Flat, 0.31, SAE	4
▲	5	07791	Nut, Hex, Flng, M8 X 1.25	4
▲	6	10632- 12	Grommet, Rbr, 0.38id, F/0.5h, .12 Matl	1
▲	7	386605	Harness, Light, Revl, OHG	1
▲	8	1064050	Duct, Afmkt, Vyl, 0.40 X 0.75 .25d, 04ft	1
▲	9	383722	Circuit Breaker, 15.0a, Resettable	1
▲	10	360520	Switch, Rocker, Spdt, On / Off / On	1

TENNANT COMPANY
P. O. Box 1452
Minneapolis, MN 55440-1452