



INSTRUCTION BULLETIN

No. 340400
Machine: 7300 / 8300
Published: 08-2015
Rev. 02

NOTE: DO NOT DISCARD the Parts List from the Instruction Bulletin. Place the Parts List in the appropriate place in the machine manual for future reference. Retaining the Parts List will make it easier to reorder individual parts and will save the cost of ordering an entire kit.

NOTE: Numbers in parenthesis () are reference numbers for parts listed in Bill of Materials.

Installation instructions for **kit number 386815**

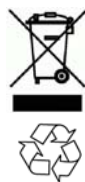
SYNOPSIS:

This kit contains the parts needed to replace a MaxPro 1000 Heavy Duty disk scrub head on 7300 / 8300 machines.

Please follow step-by-step instructions.

SPECIAL TOOLS / CONSIDERATIONS: HOIST OR LIFT

(Estimated time to complete: 2 hours)



PROTECT THE ENVIRONMENT

Please dispose of packaging materials, used machine components such as batteries and fluids in an environmentally safe way according to local waste disposal regulations.

Always remember to recycle.

PREPARATION:

1. Park the machine on a clean level surface, turn off the machine, remove the key, and set the parking brake.

FOR SAFETY: Before leaving or servicing machine, stop on level surface, turn off machine, set the parking brake, and remove key.

2. Raise the side squeegees, and latch up into the double scrub position.

NOTE: Leave the brushes installed on the scrub head. It is easier to move the scrub head from under the machine if the brushes remain installed.

TO REMOVE TWO MOTOR DISC SCRUB HEAD (MaxPro 1000)

1. Turn the machine power on, and lower the scrub head using down pressure setting #2. Turn the machine power off.
2. Move the solution flow control lever to the off position.
3. Remove the rear clevis pin from the right side kick-in guard. Rotate the guard forward out of the way.
4. Remove the hex screw holding the head lift UPPER roller to the mounting rail. Remove the roller from between the scrub head lift tabs. (Fig. 3)
5. Chock both rear wheels.

6. Jack up the front end of the machine high enough to access the steering components and remove the steering components from under the machine. Place jack stands under the machine frame and lower the machine onto the jack stands.

FOR SAFETY: When servicing machine, block machine tires before jacking machine up. Use a hoist or jack that will support the weight of the machine. Jack machine up at designated locations only. Support machine with jack stands.

7. Note the locations for the new scrub head installation, then remove any plastic ties holding wires or hoses to the scrub head.
8. Disconnect the two scrub brush motors and shunt from the main harness. (Fig. 1)
9. Disconnect the wire terminals from the water flow solenoid. (Fig. 4)
10. Disconnect the solution line from the water flow solenoid. (Fig. 4)
11. Disconnect the end of the side shift gas spring where it connects to the scrub head. (Fig. 3)
12. Disconnect the end of the side shift cable from the scrub head. (Fig. 3)
13. Remove the cotter pins and slotted nuts from the ends of the scrub head drag links attached to the machine frame. (Fig. 3)
14. Pull the drag links out of the frame mount holes. (Fig. 2).
15. Push or pull the scrub head out to the right side (operator compartment side) of the machine.

TO INSTALL TWO MOTOR HEAVY DUTY DISC SCRUB HEAD (MaxPro 1000)

FOR SAFETY: Before leaving or servicing machine, stop on level surface, turn off machine, set the parking brake, and remove key.

1. Chock both rear wheels.
2. Jack up the front end of the machine high enough to access the steering components and remove the steering components from under the machine. Place jack stands under the machine frame and lower the machine onto the jack stands.

FOR SAFETY: When servicing machine, block machine tires before jacking machine up. Use a hoist or jack that will support the weight of the machine. Jack machine up at designated locations only. Support machine with jack stands.

3. Raise and latch the side squeegees on the new scrub head up into the double scrub position.
4. Ensure the scrub brushes are installed on the new scrub head. (Fig. 1)
5. Push or pull the scrub head into the right side (operator compartment side) of the machine. Push the head in until it is centered in the machine frame.
6. Position the four scrub head drag links into the frame mounting holes. (Fig. 2)
7. Reinstall the slotted nuts onto the ends of the scrub head drag links, where they attach to the machine frame. Tighten the nuts tight. Reinstall the cotter pins. (Fig. 2)
8. Reconnect the water flow solenoid to the main harness. (Fig. 4)
9. Reconnect the solution line to the water flow solenoid. (Fig. 4)

10. Connect the main wire harness to the shunt and the scrub brush motors. (Fig. 5)

NOTE: Be sure the correct shunt is installed for each individual scrub head.

Shunt 363236- (2) 1.0 HP Disk motors

1.25MV/1AMP (BLACK)

Shunt 363237- (2) 1.5 HP Disk or Cylindrical motors 1.0MV/1AMP (RED)

Shunt 363238- (3) 1.0 HP Disk motors

Single- 1.25MV/1AMP (YELLOW)

Dual- 0.625MV/1AMP (YELLOW)

11. Secure wires and solution lines in place with plastic ties.
12. Slightly raise machine from jack stands, remove the jack stands from under the machine, and lower the machine to the floor.
13. Use the manual electronic controls to carefully lower the lift rail down on the lower roller, placing it in between the lift tabs. Install the upper head lift roller using the M8 bolt. Tighten the roller mount screw to 18 to 24 Nm (15- 20 ft-lbs) .(Fig. 3)

Manual Mode: In the manual mode, it is possible to turn on and off accessories individually and manually. The operator can turn on accessories regardless of inputs or interlocks.

To initiate the manual mode:

- A. Turn off the machine.
- B. Press and hold the logo button and turn on the machine while continuing to hold the button.
- C. Hold the logo button for 15 seconds.
- D. Release the logo button.

- E. Select the manual mode.

After selecting the manual mode, press the Logo button to access the various functions to troubleshoot. Scroll to the appropriate screen with the Logo button to manually operate the scrub head.

Press the scrub button while in the manual mode to turn on and lower the main scrub head. The brush head actuator will continue to lower until the scrub button is released. Reactivate the scrub button to turn off the scrub brushes and raise the scrub head.

NOTE: Do not hold the scrub button down long. Damage to the actuator and the scrub head could occur.

14. Connect the side shift cable and gas spring to the scrub head with the set aside ball stud and nut. (Fig. 3)
15. Use the saved clevis pin to reconnect the kick in guard to the scrub head. (Fig. 2)
16. Lower both of the side squeegees from the double scrub position.
17. Turn on the machine power, and raise the scrub head. Operate the machine and check the scrub head for proper operation.

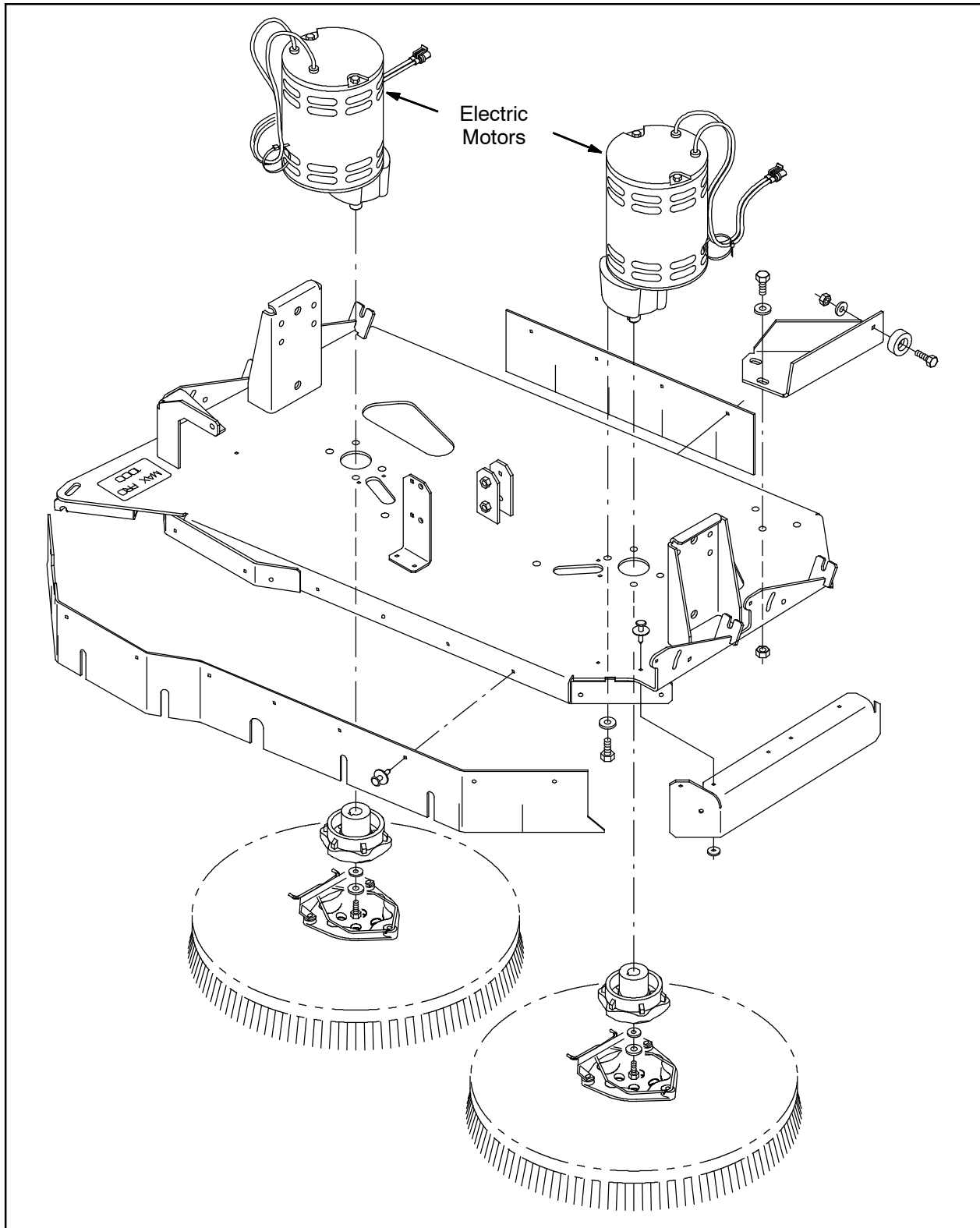


FIG. 1 - Max Pro 1000 HD Scrub Head Frame Group

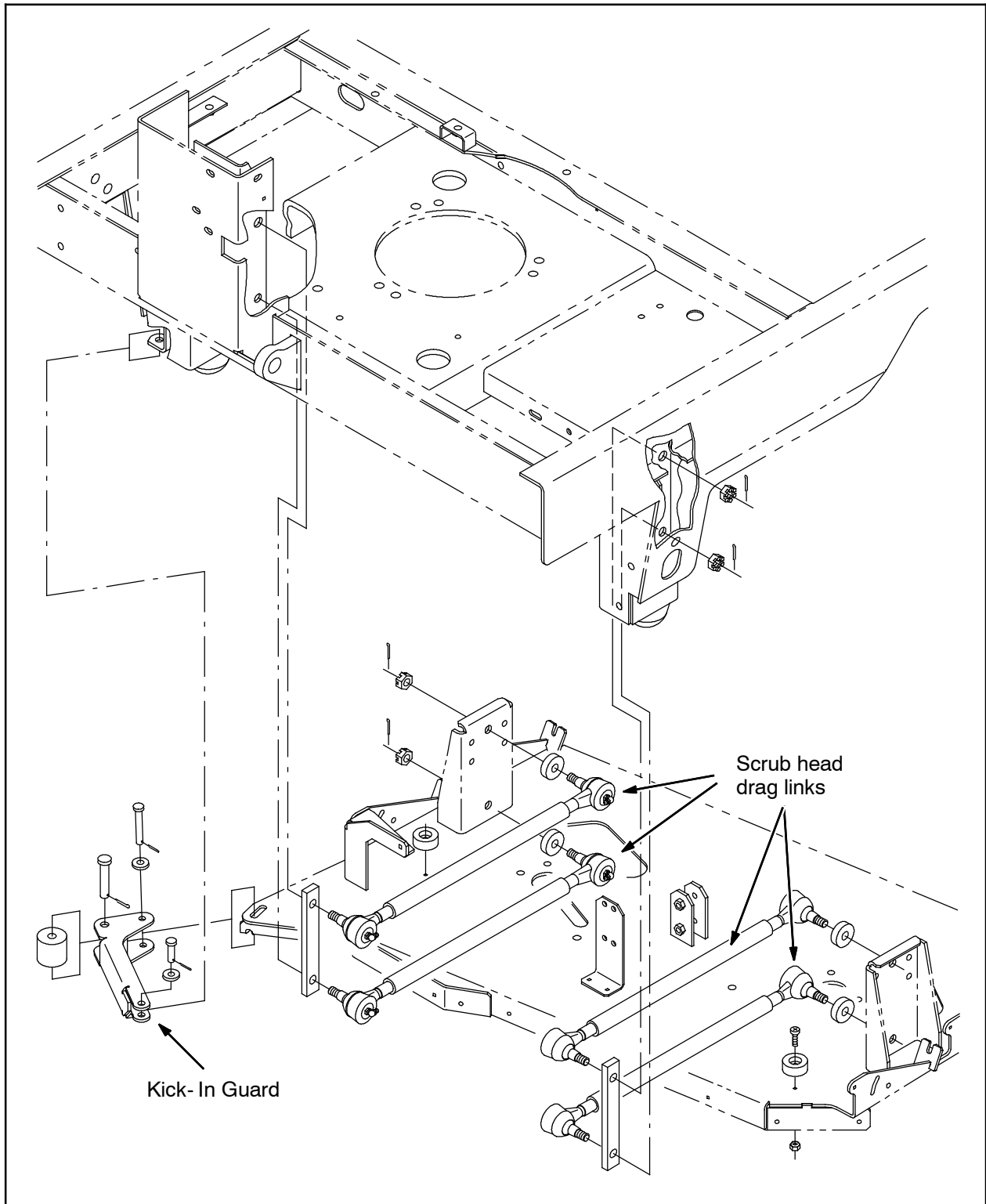


FIG. 2 - Max Pro 1000 HD Scrub Head Linkage Group

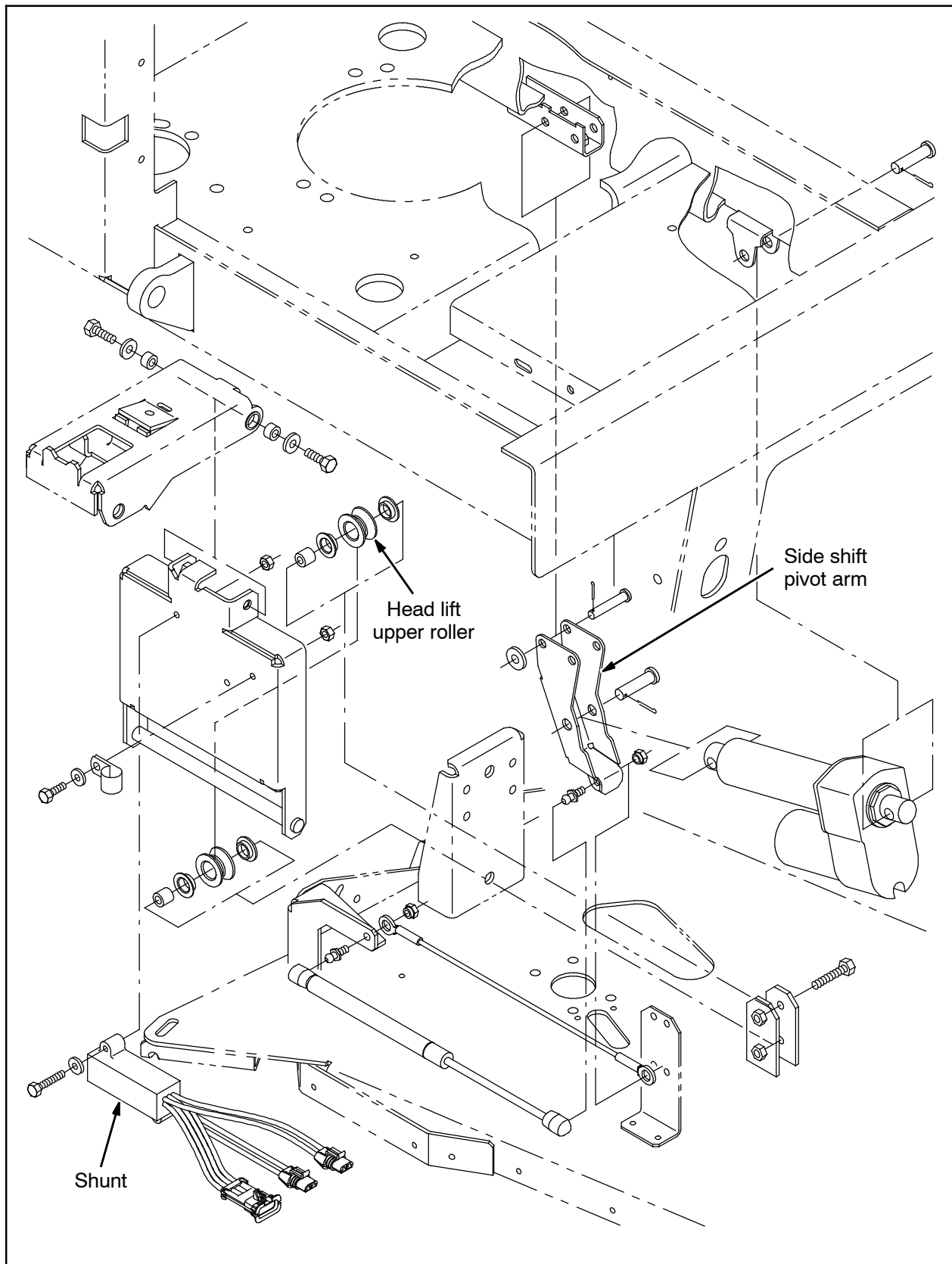


FIG. 3 - Max Pro 1000 HD Disc Brush Edge Scrub Group

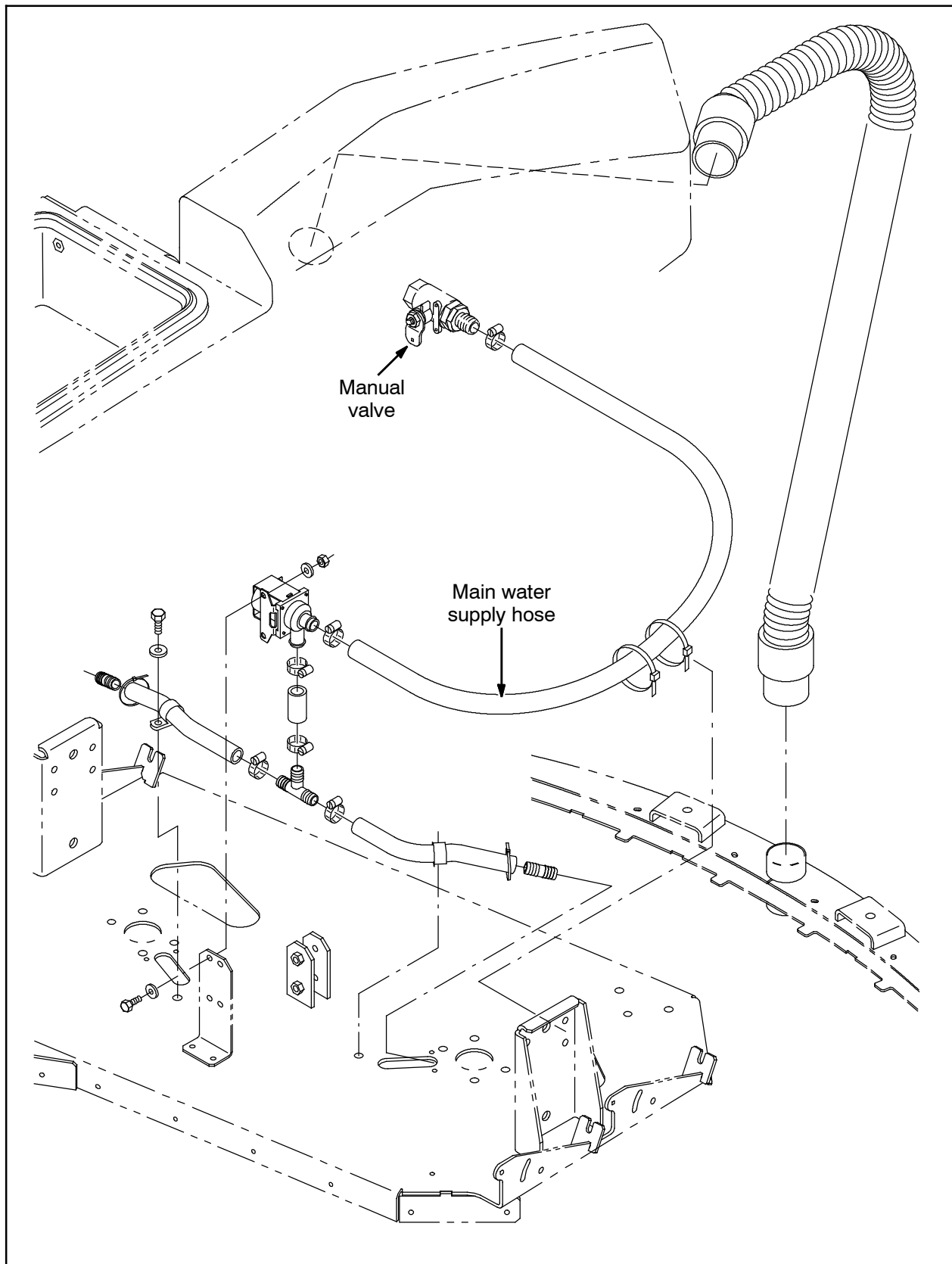
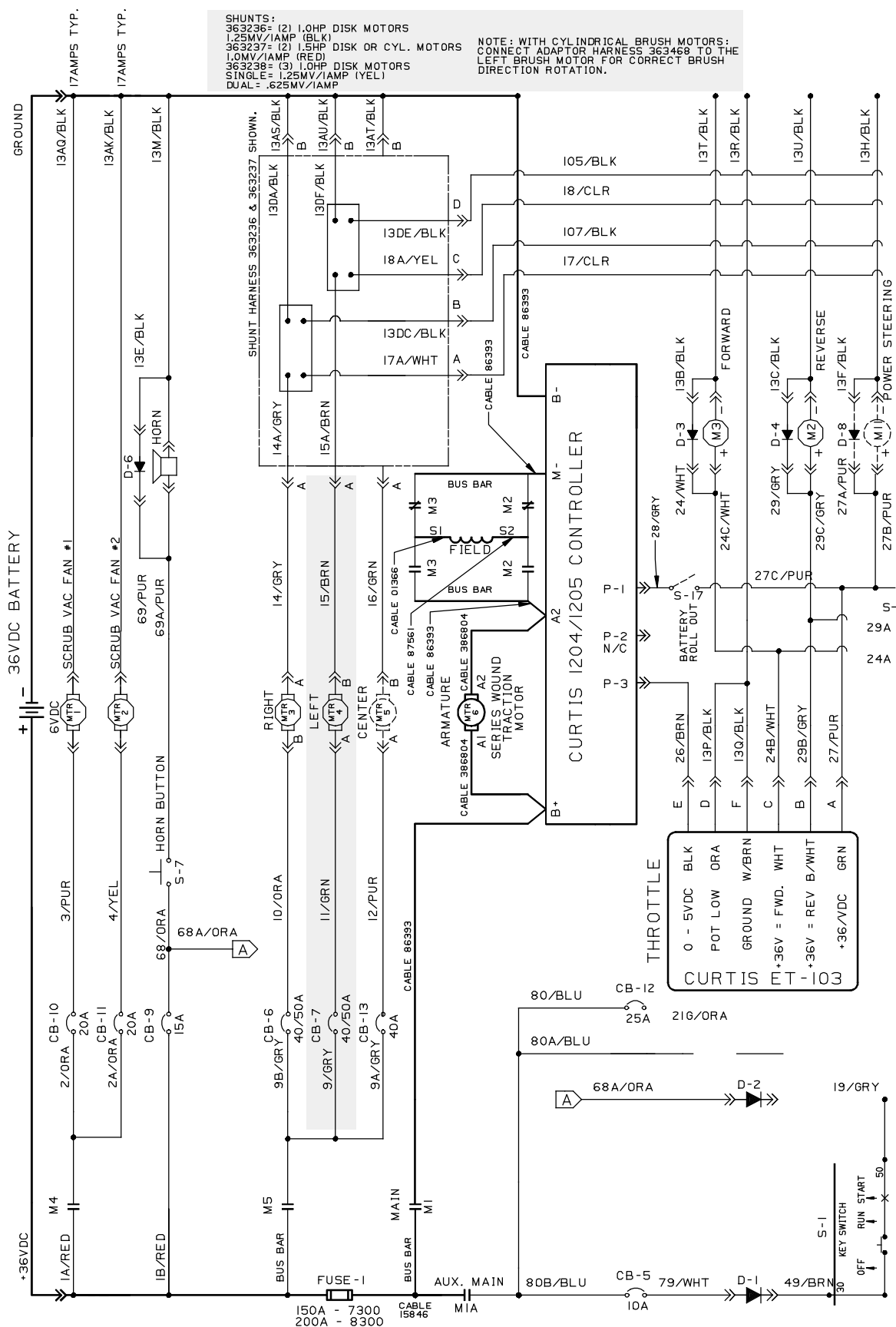


FIG. 4 - Max Pro 1000 HD Disk Brush Solution Control Group



Bill Of Materials For Head Kit, Scb, Disk, Hd, CI [MP1000] - 386815

	Ref.	Tennant Part No.	Description	Qty.
▽		386815	Head Kit, Scb, Disk, Hd, CI [MP1000]	1
▲	1	387167	Head Assy, Scb, Disk, HD [MP1000]	1
▲	2	363152	Actuator, 36VDC, 03.5Strk, 0500Lb	1
▲	3	51534	Pin, Clevis, 0.50D X 2.00L	2
▲	4	08182	Pin, Cotter, .125 X 1.00	2
▲	5	58494	Stud, Ball, .39D .31- 16, Gas Spring	1
▲	6	14725	Nut, Retainer, .31- 18	1
▲	7	1056844	Rail Wldt, Lift, Disk Head, Iron Gray	1
▲	8	222556	Sleeve, P/M, 0.34B 0.63D 0.4L, Bnz	2
▲	9	01685	Washer, Flat, 0.38B 0.88D .08, SS	2
▲	10	39308	Screw, Soc, M8 X 1.25 X 25, 12.9	2
▲	11	363237	Shunt, 2 HD Motor, Red [SCB 515]	1
▲	12	33930	Screw, Hex, M6 X 1.00 X 40, SS	2
▲	13	01684	Washer, Flat, 0.27B 0.69D .05, SS	4
▲	14	12459	Screw, Hex, M6 X 1.00 X 20, Fmg	1
▲	15	386267	Hose, Vacuum, 091.0L	1
▲	16	08712	Nut, Hex, Lock, M6 X 1.00, NL, SS	3
▲	17	67767	Clamp, Cable, Stl, 0.69D X 0.62W, 1Hole	2
▲	18	08716	Screw, Hex, M6 X 1.00 X 20, SS	1
▲	19	29584	Pin, Clevis, 0.37D X 2.00L	1
▲	20	01686	Washer, Flat, 0.44B 1.00D .08, SS	1
▲	21	39005	Pin, Cotter, .094 X 0.75	1
▲	22	365252	Rivet, Plstc, .250D X 0.75	6
▲	23	32815	Tie, Cable, Nyl, 28.3L .50W 8.0 Max D	2
▲	24	32691	Adhesive, Thread, 50.0ML [242BLU] - 0.010 ML	1

TENNANT COMPANY
P. O. Box 1452
Minneapolis, MN 55440-1452