



# INSTRUCTION BULLETIN

No. 340334  
Machine: 385 LH  
Published: 1-01/01  
System: SWEEPING

**NOTE: DO NOT DISCARD the Parts List from the Instruction Bulletin. Place the Parts List in the appropriate place in your machine manual for future reference. Retaining the Parts List will make it easier to reorder individual parts and will save you the cost of ordering an entire kit.**

*NOTE: Numbers in parenthesis ( ) are reference numbers for parts listed in Bill of Materials.*

Installation instructions for kit number 369725 (12V)

## **SYNOPSIS / PROBLEM:**

This kit contains the parts needed to install a new style filter shaker assembly on the model 385 LH sweeper.

Please follow step-by-step instructions.

## **SPECIAL TOOLS / CONSIDERATIONS: NONE**

(Estimated time to complete: 1 hour)

## **PREPARATION:**

(Refer to FIG. 1, 2 and 3)

**FOR SAFETY: Before leaving or servicing machine, stop on level surface and set parking brake. Then turn off machine and remove key.**

1. Disconnect battery cables from machine.



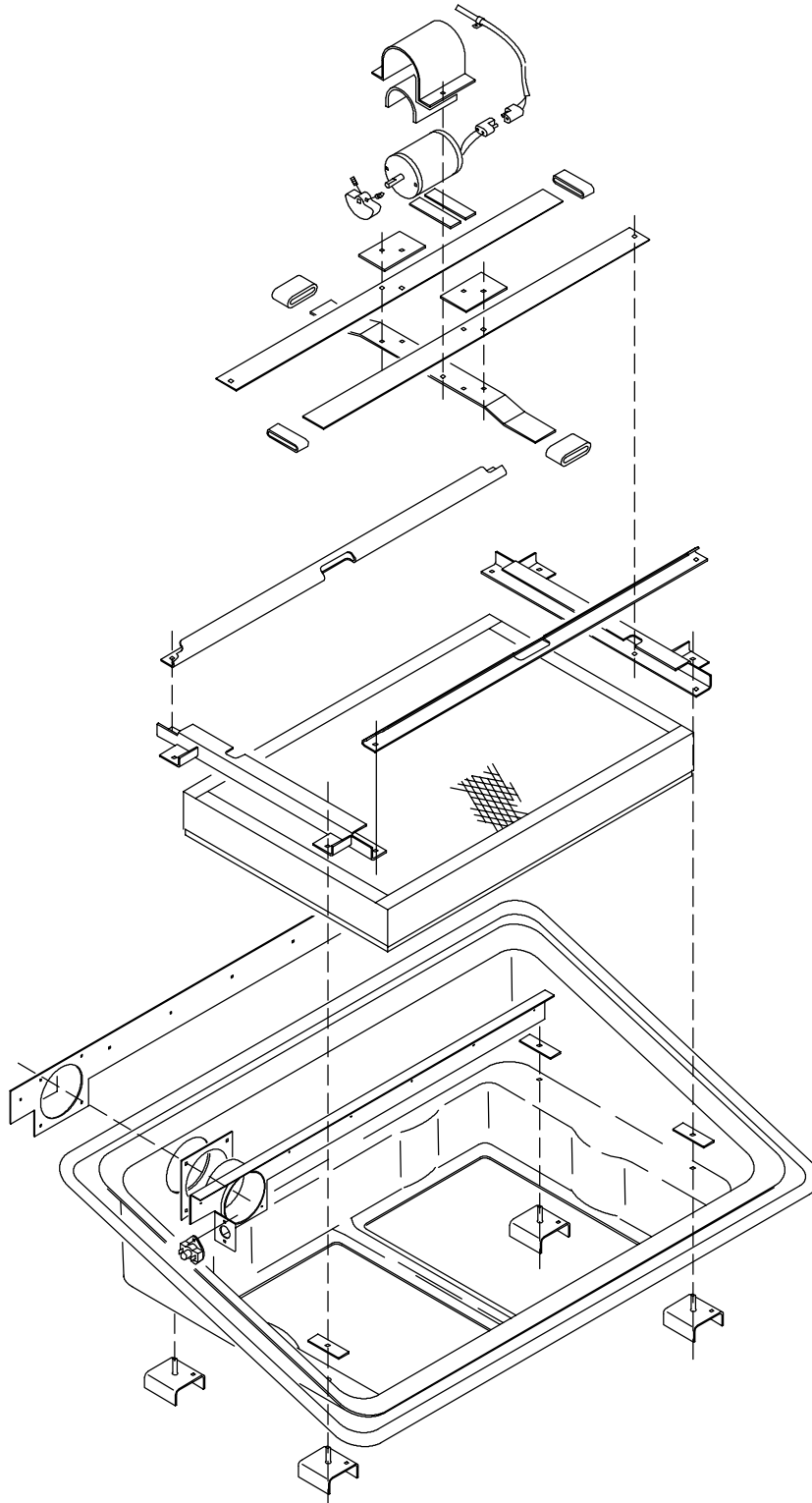
**WARNING: Always disconnect battery cables from machine before working on electrical components.**

## **INSTALLATION:**

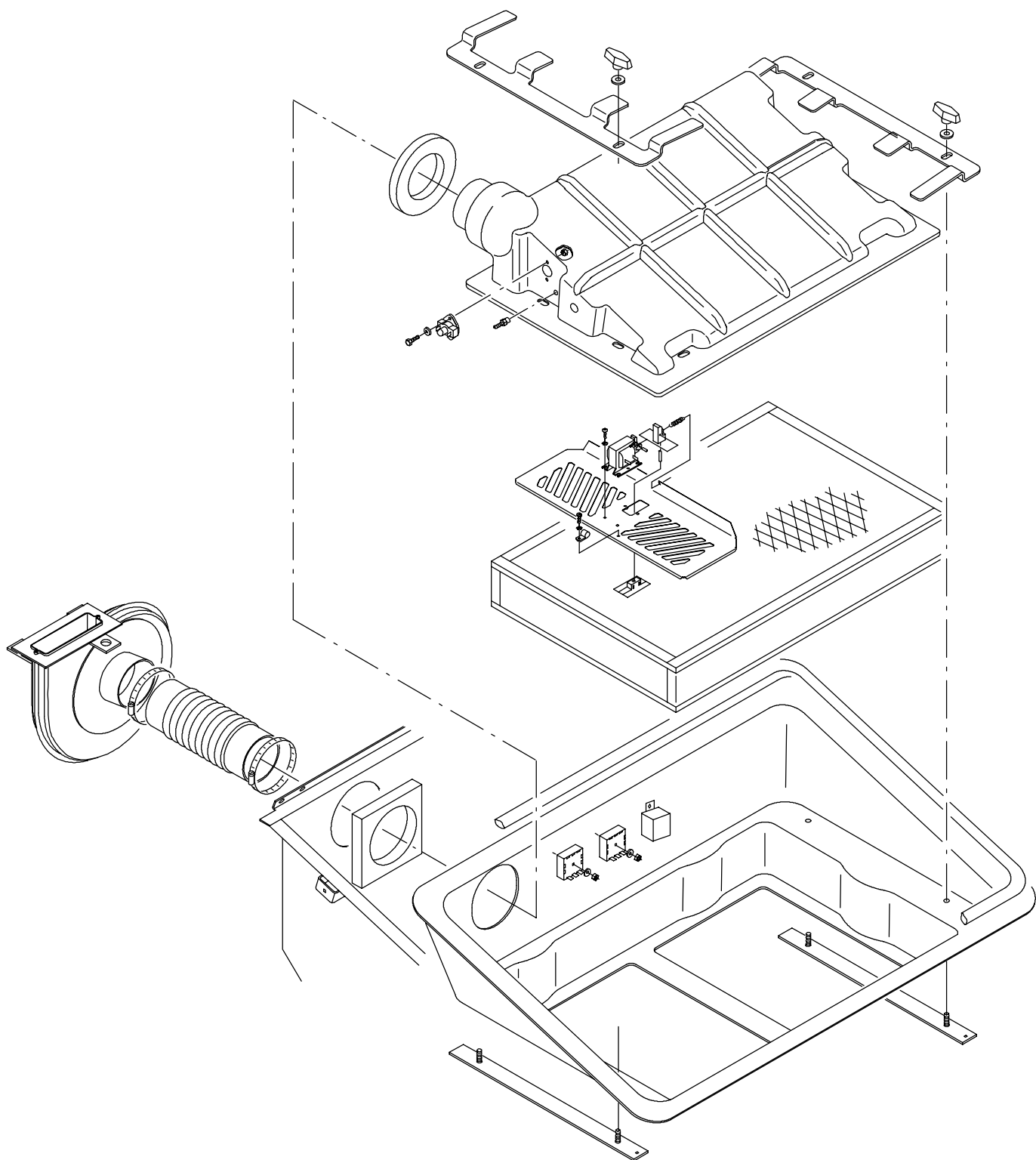
(Refer to FIG. 1, 2 and 3)

1. Open the hopper cover.
2. Disconnect the wires leading to the Thermo Sentry™. (Refer to FIG. 1)
3. Unplug the hopper harness from the shaker motor. (Refer to FIG. 1)
4. Pull the filter tray forward slightly and loosen the worm drive clamp holding the flexible hose to the back of the vacuum inlet tube. Pull the flexible hose off the tube. (Refer to FIG. 2)
5. Pull the existing filter tray assembly out of the machine and discard the parts indicated in Fig. 1. (Refer to FIG. 1)
6. Position the new filter tray assembly into the machine hopper. (Refer to FIG. 2, 3, 4 and 5)
7. Reconnect the flexible hose to the vacuum inlet at the back of the new filter carrier tray. Tighten the worm drive clamp. (Refer to FIG. 2)
8. Plug the existing hopper harness into the two prong plug of the jumper harness and to the new shaker harness

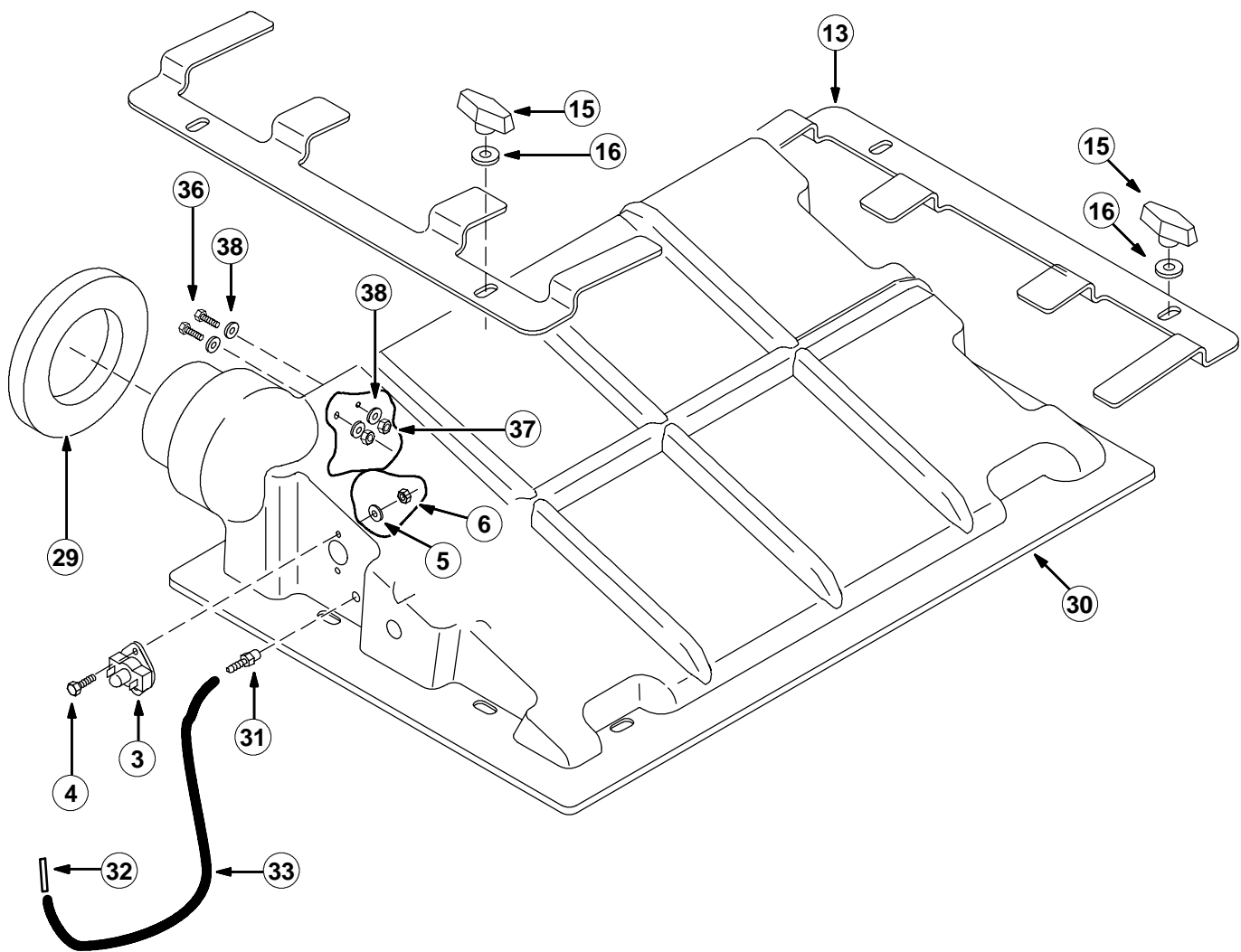
9. Connect the two remaining wires of the existing hopper harness into the jumper harness, and to the Thermo Sentry™. (Refer to FIG. 3)
10. Connect the vacuum hose and fitting into the existing vacuum hose that is tied up with the hopper harness wires. (Refer to FIG. 3)
11. Operate the filter haker and check the new assembly for proper operation. Close the hopper cover.



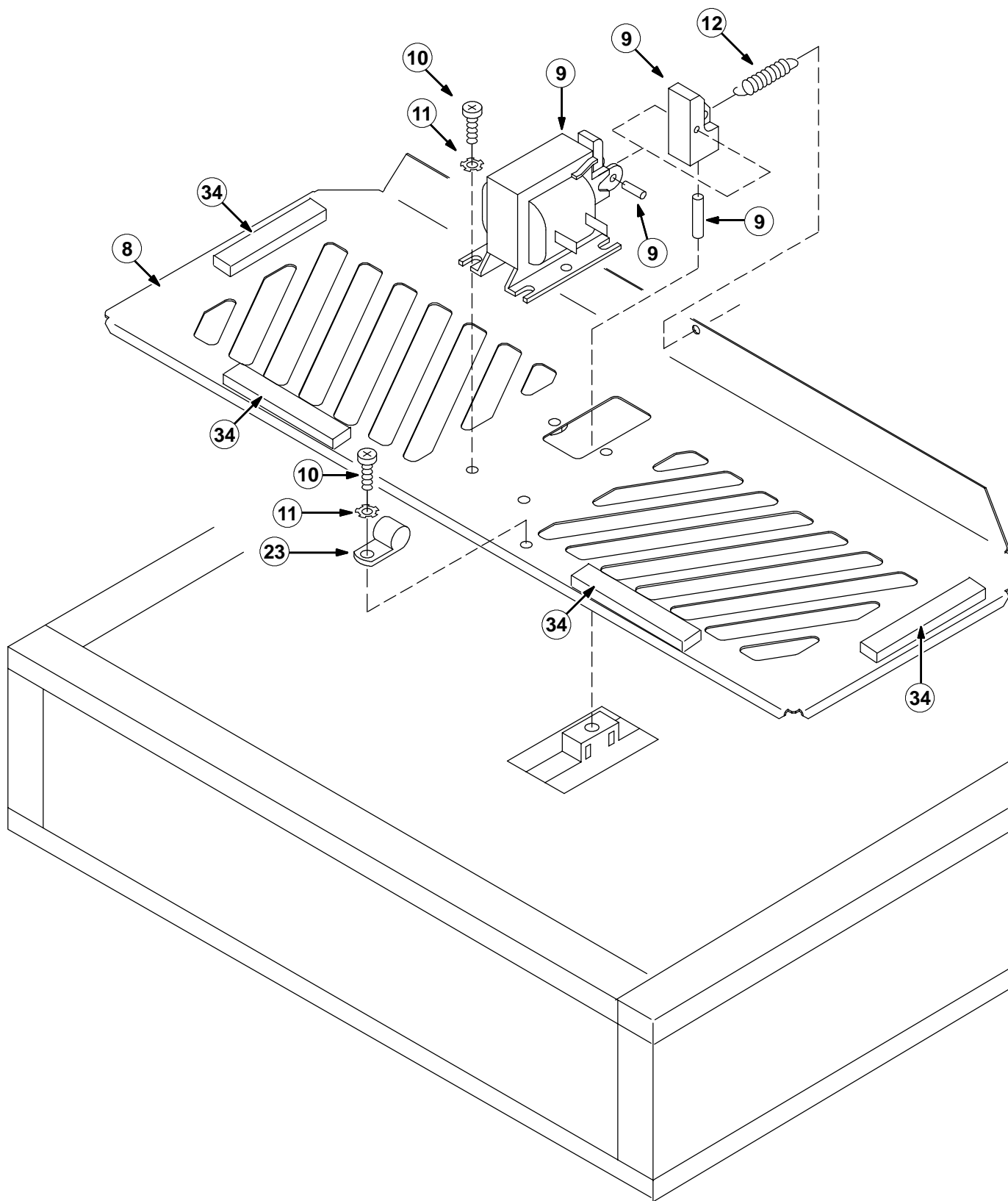
**FIG. 1 - Parts To Remove And Discard**



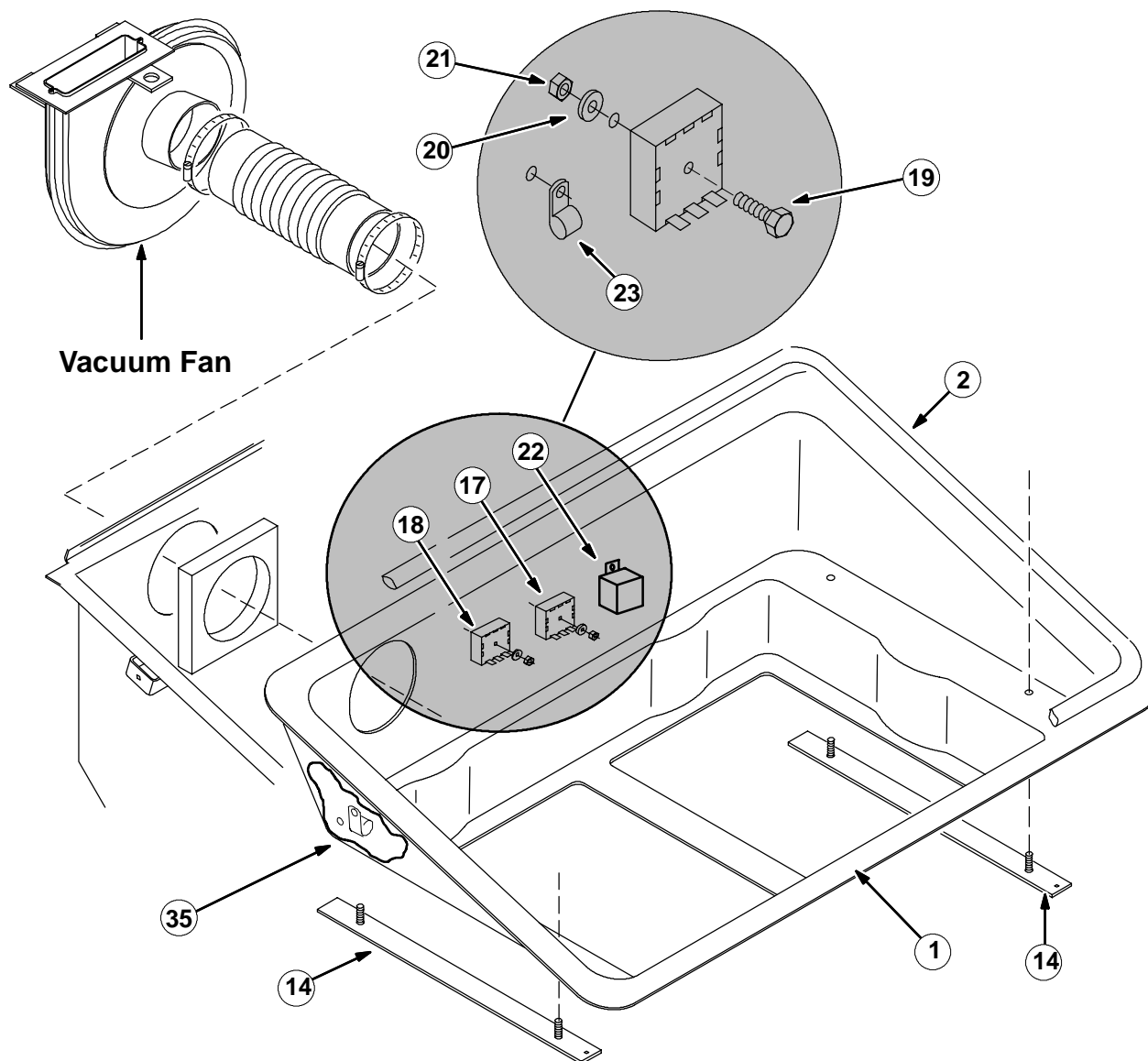
**FIG. 2 - New Filter Shaker Assembly**



**FIG. 3 - New Filter Shaker Assembly**



**FIG. 4 - New Filter Shaker Assembly**



**FIG. 5 - NEW FILTER SHAKER ASSEMBLY**

**BILL OF MATERIALS FOR ELECTRONIC FILTER KIT 369725**

| Ref. | TENNANT<br>Part No. | Description                   | Qty. |
|------|---------------------|-------------------------------|------|
| 1    | 379840              | Tray, Filter                  | 1    |
| 2    | 79425               | Seal, Bulb                    | 1    |
| 3    | 02712               | Thermostat                    | 1    |
| 4    | 09244               | Screw, Hex, M05-0.8 X 16, 8.8 | 2    |
| 5    | 19066               | Washer, Flat, #10             | 2    |
| 6    | 06549               | Nut, Hex, Lock, M05-0.8, NL   | 2    |
| 7    | 379629              | Kit, Fltr, Fine Particle      | 1    |
| 8    | 379555              | Plate, Panel, Shaker          | 1    |
| 9    | 37989               | Solenoid, Filter Shaker       | 1    |
| 10   | 49697               | Screw, Pan, M04-0.7 X 10, SS  | 5    |

|    |         |                                      |   |
|----|---------|--------------------------------------|---|
| 11 | 19065   | Washer, Flat, #08                    | 5 |
| 12 | 81812   | Spring                               | 1 |
| 13 | 379530  | Bracket, Filter, Hold-Down           | 2 |
| 14 | 379531  | Bar                                  | 2 |
| 15 | 04706   | Handle, Lift, Brush                  | 4 |
| 16 | 32492   | Washer, Flat, .38 Hard               | 4 |
| 17 | 379656  | Timer                                | 1 |
| 18 | 81923   | Module                               | 1 |
| 19 | 33944   | Screw, Pan, M06-1.0 X 35, 4.8        | 2 |
| 20 | 32483   | Washer, Flat, .25 SAE                | 2 |
| 21 | 08708   | Nut, Hex, Lock, M06-1.0, NL          | 2 |
| 22 | 10865   | Relay, 12VDC, 40AMP SPDT             | 1 |
| 23 | 26395-2 | Clamp, Cable, 0.38D 0.38W STL 1Hole  | 2 |
| 24 | 06933   | Screw, Pan, M05-0.8 X 16, 4.8        | 4 |
| 25 | 19324   | Washer, Flat, #10 SAE                | 4 |
| 26 | 06549   | Nut, Hex, Lock, M05-0.8, NL          | 4 |
| 27 | 379653  | Kit, Harness, Wire, Shaker (355L)    | 1 |
| 28 | 26395   | Clamp, Cable, 0.56D 0.38W STL 1 Hole | 1 |
| 29 | 379560  | Seal, Hopper                         | 1 |
| 30 | 379839  | Cover, Filter,                       | 1 |
| 31 | 40607   | Fitting, Brass, Str PM02/BM03        | 1 |
| 32 | 379759  | Fitting, Plastic, Str BM03/BM03      | 1 |
| 33 | 39780-1 | Hose, Vacuum, 29 Inch                | 1 |
| 34 | 379822  | Foam Pad                             | 4 |
| 35 | 30408   | Clip                                 | 1 |
| 36 | 09164   | Screw, Pan, M06-1.0 X 20, 4.8        | 2 |
| 37 | 08708   | Nut, Hex, Lock, M06-1.0,             | 2 |
| 38 | 32483   | Washer, Flat, .25 SAE                | 4 |
| 39 | 72552   | Harness, Wire, Motor, Shaker         | 3 |
| 40 | 72553   | Harness, Wire, Switch, Thermal       | 2 |

TENNANT COMPANY  
P. O. Box 1452  
Minneapolis, MN 55440-1452

