



INSTRUCTION BULLETIN

No. 340217
Machine: 7400
Published: 11-98/00
System: HYDRAULICS

NOTE: DO NOT DISCARD the Parts List from the Instruction Bulletin. Place the Parts List in the appropriate place in your machine manual for future reference. Retaining the Parts List will make it easier to reorder individual parts and will save you the cost of ordering an entire kit.

NOTE: Numbers in parenthesis () are reference numbers for parts listed in Bill of Materials.

Installation instructions for kit number 369820

SYNOPSIS / PROBLEM:

This kit contains the parts needed to replace the side brush motor on the model 7400 scrubber. Please follow step-by-step instructions.

SPECIAL TOOLS / CONSIDERATIONS: None

(Estimated time to complete: 1 hour)

MOTOR REPLACEMENT:

(Refer to FIG. 1)

FOR SAFETY: Before leaving or servicing machine, stop on level surface and set parking brake. Then turn off machine and remove key.

1. Remove the side brush.

FOR SAFETY: Before Leaving Or Servicing Machine; Stop On Level Surface, Set Parking Brake, Turn Off Machine And Remove Key.

2. Remove the four hex screws holding the side brush guard to the machine frame.
3. Remove the hex screw holding the side brush drive hub to the side brush motor. Remove the drive hub from the motor.
4. Mark, disconnect, and plug the two hydraulic hoses going to the side brush motor.

NOTE: Observe hydraulic cleanliness requirements when opening hydraulic lines.

5. Remove the four hex screws holding the side brush motor to the mount plate.
6. Lift the motor straight up, tilt back, and remove it from the side brush assembly.

NOTE: Make sure to note the orientation of the motor to the mount plate.

7. Remove the hydraulic fittings from the old motor and install in the new motor in the same orientation.

8. Position the new motor back in the side brush assembly.
9. Reinstall the four hex screws and tighten to 37 - 48 Nm (26 - 34 ft lb).
10. Reconnect the hydraulic hoses to the motor. See schematic in this section.

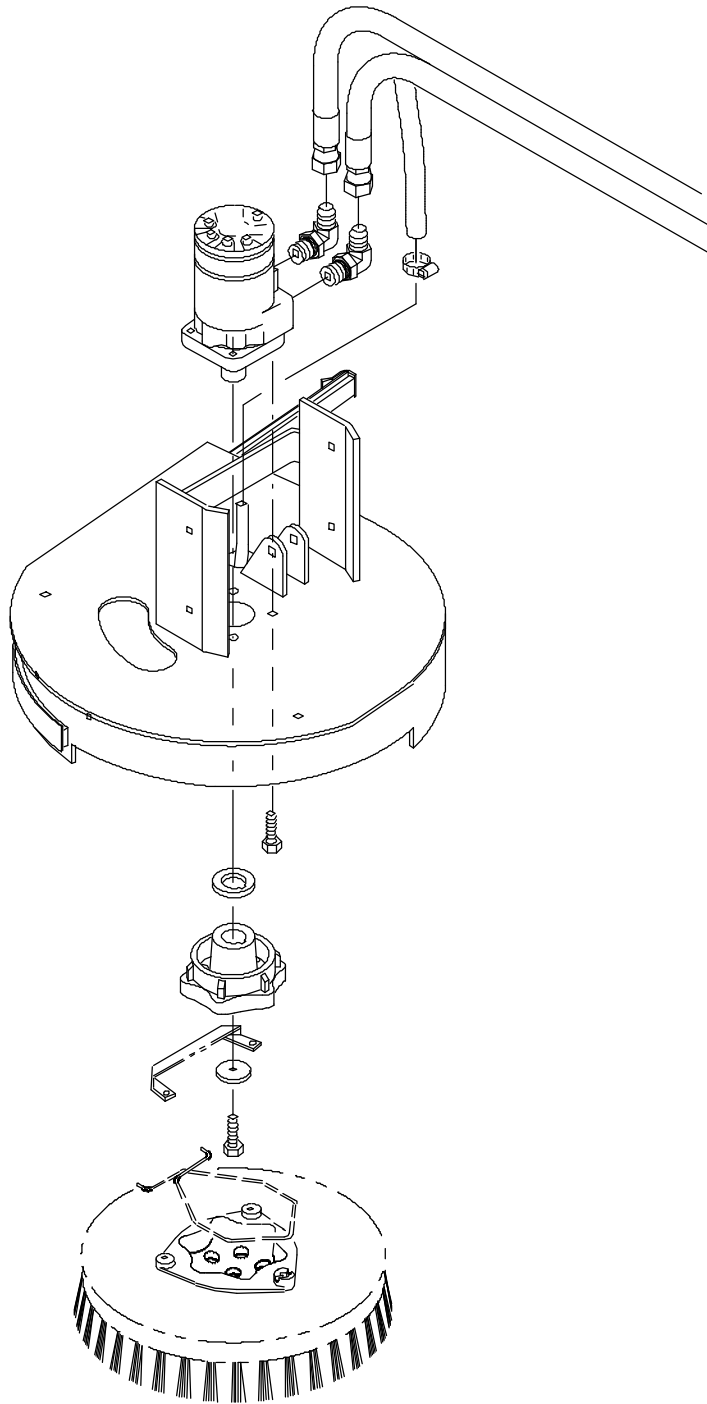


FIG. 1 - Side Brush Motor Assembly

11. Reinstall the drive hub, washers, and hex screw. Tighten to 18 - 24 Nm (15 - 20 ft lb).
12. Reinstall the side brush.
13. Reinstall the side brush guard to the machine frame. Tighten the four hex screws to 37 - 48 Nm (26 - 34 ft lb).
14. Operate the machine and check the side brush for proper operation.

BILL OF MATERIALS FOR HYDRAULIC MOTOR REPLACEMENT KIT 369820

Ref.	TENNANT Part No.	Description	Qty.
1	369816	Motor, hydraulic, gear	1
2	74250	Repair info, Eaton	1

REPAIR PARTS LIST FOR MOTOR 369816

Ref.	TENNANT Part No.	Description	Qty.
1	37555	Screw	4
2	31354	4 bolt mounting flange	1
3	16695	Thrust race	1
4	45628	Bearing	1
5	21924	Output shaft	1
6	74100	Housing	1
7	74175	Drive	1
8	74094	Spacer plate	1
9	74177	Gerotor assembly	1
10	65230	End cap	1
11	74178	Cap screw	5
12	00500-15	Woodruff key	1
13	22654	Seal kit	1

TENNANT COMPANY
P. O. Box 1452
Minneapolis, MN 55440-1452