



INSTRUCTION BULLETIN

No. 340211
Machine: 8200,8210
Published: 2-99/00
System: SCRUBBING

NOTE: DO NOT DISCARD the Parts List from the Instruction Bulletin. Place the Parts List in the appropriate place in your machine manual for future reference. Retaining the Parts List will make it easier to reorder individual parts and will save you the cost of ordering an entire kit.

NOTE: Numbers in parenthesis () are reference numbers for parts listed in Bill of Materials.

Installation instructions for kit number 365321

SYNOPSIS / PROBLEM:

This kit contains the parts needed to install a squeegee guard kit on the 8200/8210 model sweeper/scrubber.

Please follow step-by-step instructions.

SPECIAL TOOLS / CONSIDERATIONS: NONE

(Estimated time to complete: 1 hour)

PREPARATION:

(Refer to FIG. 1, 2 and 3)

FOR SAFETY: Before leaving or servicing machine, stop on level surface and set parking brake. Then turn off machine and remove key.

1. Disconnect battery cables from machine.



WARNING: Always disconnect battery cables from machine before working on electrical components.

INSTALLATION:

(Refer to FIG. 1, 2 and 3)

1. Inspect the machine for Positive Control Solution Drain Kit.
2. If Positive Control Solution Drain Kit is installed, remove the metal bumper (p.n. 365151) installed on both standard and ES machines. (Refer to FIG. 1 and 2)
3. Mount tube assembly (3) to mounting holes in rear of machine with hex screws (5) and washers (4). (Refer to FIG. 3)

Note: If machine is equipped with overhead guard, mount tube assembly(3) over overhead guard mounting bracket, with new mounting hardware.

4. Insert open end of right hand guard assembly (1) into right side of tube assembly (3). (Refer to FIG. 3)
5. Loosely mount side mounting bracket of right hand guard assembly (1) to side of machine with 2 hex screws (5) and 2 washers (4). (Refer to FIG. 3)
6. Loosely mount corner mounting bracket of right hand guard assembly (1) to rear right corner of machine with 1 hex screw (6) 2 washers (7) and 1 nut (8). (Refer to FIG. 3)

7. Mount left hand guard assembly (2) loosely to machine in same order, opposite the right hand guard assembly (1). (Refer to FIG. 3)
8. Tighten all mounting hardware.

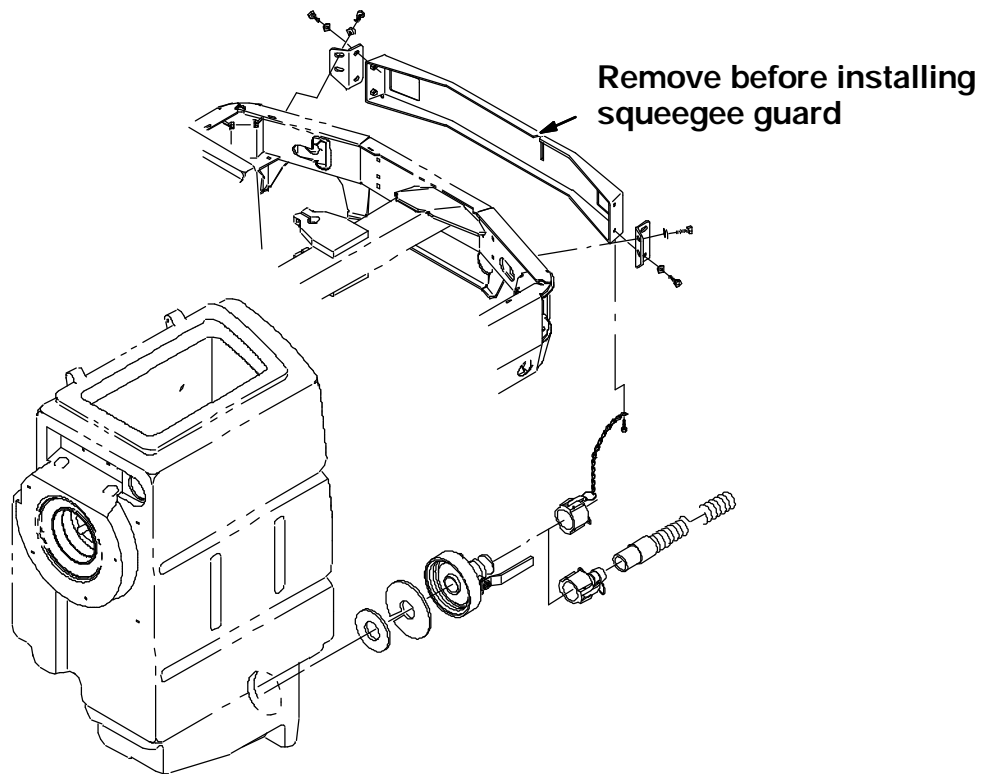


FIG. 1 - BUMPER REMOVAL ON STANDARD MACHINE

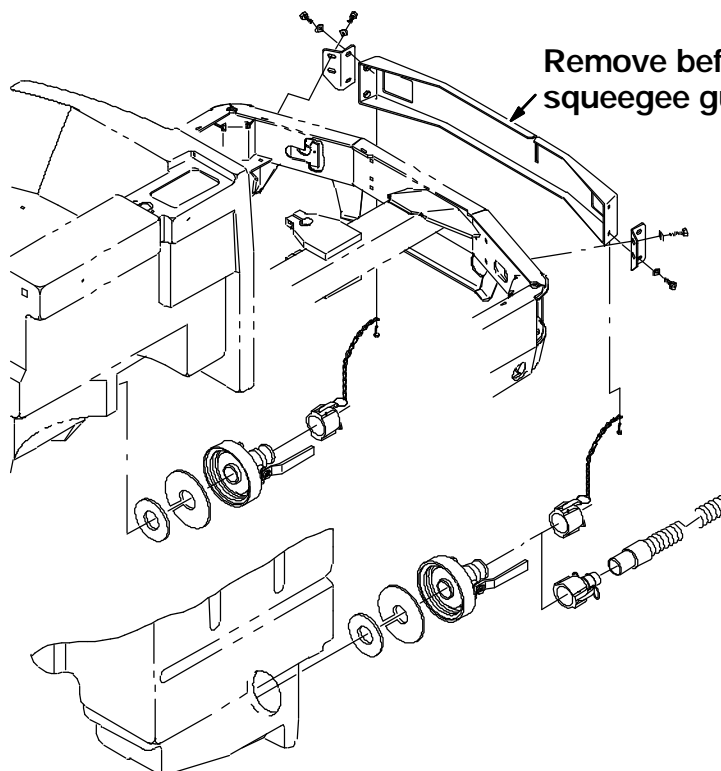


FIG. 2 - BUMPER REMOVAL ON EST MACHINE

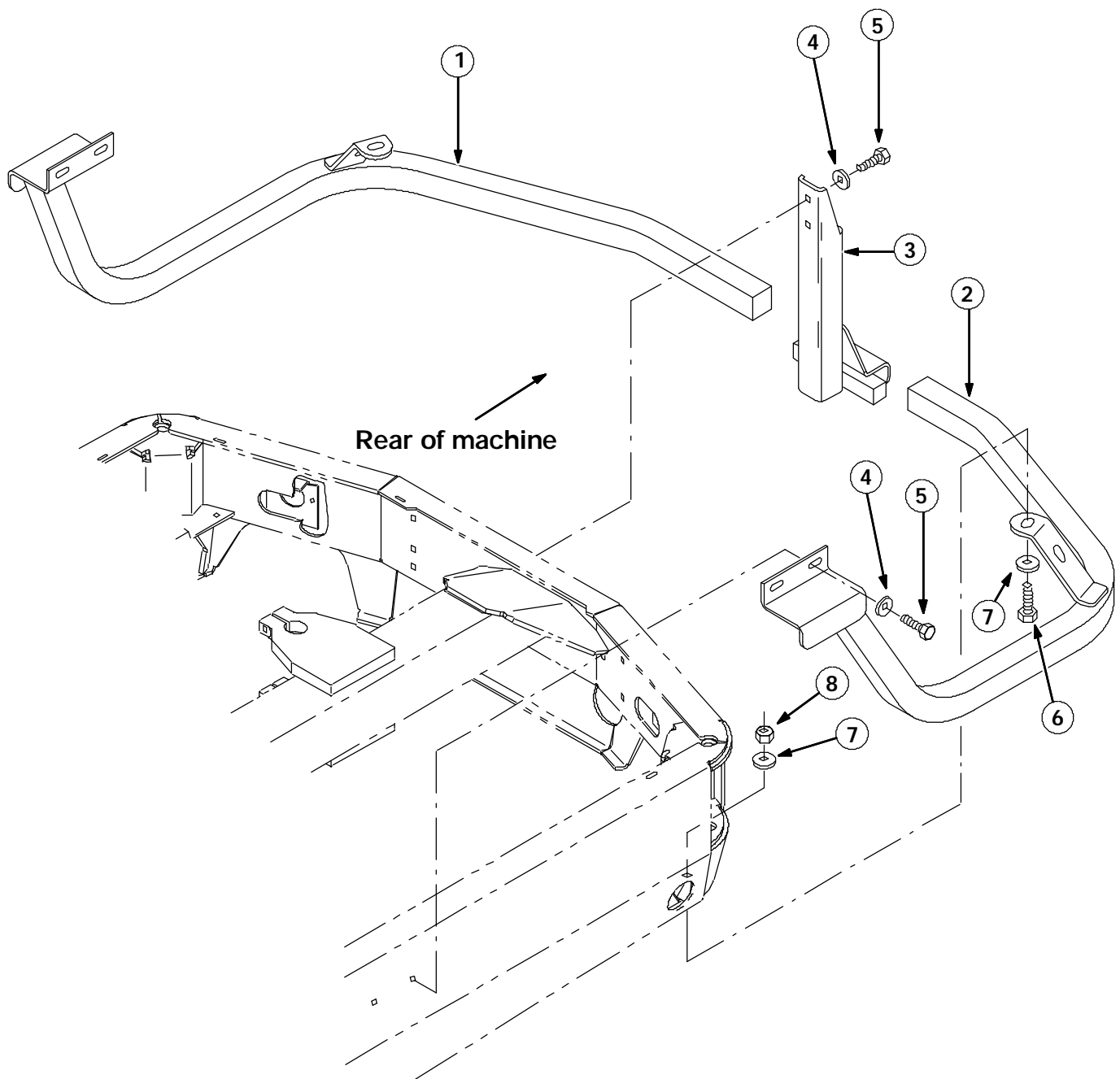


FIG. 3 - SQUEEGEE GUARD KIT INSTALLATION

BILL OF MATERIALS FOR SQUEEGEE GUARD KIT 365321

Ref.	TENNANT Part No.	Description	Qty.
1	365312	Wldt, right hand guard	1
2	365313	Wldt, left hand guard	1
3	365317	Wldt, post	1
4	39346	Washer, flt .44	6
5	39284	Scr, hex M10 X 1.5	6
6	41346	Scr, hex M12 X 1.75	2
7	35843	Washer, .53 ob, 1.5 od	4
8	08711	Nut, hxlocnyln	2

TENNANT COMPANY
P. O. Box 1452
Minneapolis, MN 55440-1452