



INSTRUCTION BULLETIN

No. 340200
Machine: 8200 8210
Published: 12-98/00
System: SCRUBBING

NOTE: DO NOT DISCARD the Parts List from the Instruction Bulletin. Place the Parts List in the appropriate place in your machine manual for future reference. Retaining the Parts List will make it easier to reorder individual parts and will save you the cost of ordering an entire kit.

NOTE: Numbers in parenthesis () are reference numbers for parts listed in Bill of Materials.

Installation instructions for kit number 365296

SYNOPSIS / PROBLEM:

This kit contains the parts needed to replace the rear squeegee lift assembly on the model 8200/8210 sweeper/scrubber.

Please follow step-by-step instructions.

SPECIAL TOOLS / CONSIDERATIONS: None

(Estimated time to complete: 3 hours)

PREPARATION:

(Refer to FIG. 1)

FOR SAFETY: Before leaving or servicing machine, stop on level surface and set parking brake. Then turn off machine and remove key.

1. Start the machine and lower the rear squeegee. Shut off the engine.

DISASSEMBLY:

(Refer to FIG. 1)

1. Remove the cotter pin and clevis pin from the squeegee lift cable at the squeegee frame.
2. Remove the tension spring from the lift pivot and machine frame.
3. Remove the cotter pin and clevis pin holding the rod end of the lift cylinder to the upper bellcrank.
4. Remove the retaining ring holding the lower end of the lift cylinder to the pivot plate.
5. Remove the hex screws holding the remaining squeegee lift assembly to the machine frame. Remove the existing lift assembly from the machine.

INSTALLATION:

(Refer to FIG. 1 and 2)

1. Use the diagram in Fig. 1 to assemble the new rear squeegee lift parts.
2. Install the new lift assembly into the machine. Use the five new screws (2) and washers (3). Tighten to 18 - 24 Nm (15 - 20 ft lb).
3. Use the diagram in Fig. 2 to route the rear squeegee lift cable properly around the two rollers.

4. Install the existing hydraulic lift cylinder onto the new lift assembly.
5. Connect the new lift cable to the existing squeegee frame.
6. Operate the machine and check the new rear squeegee lift assembly for proper operation.

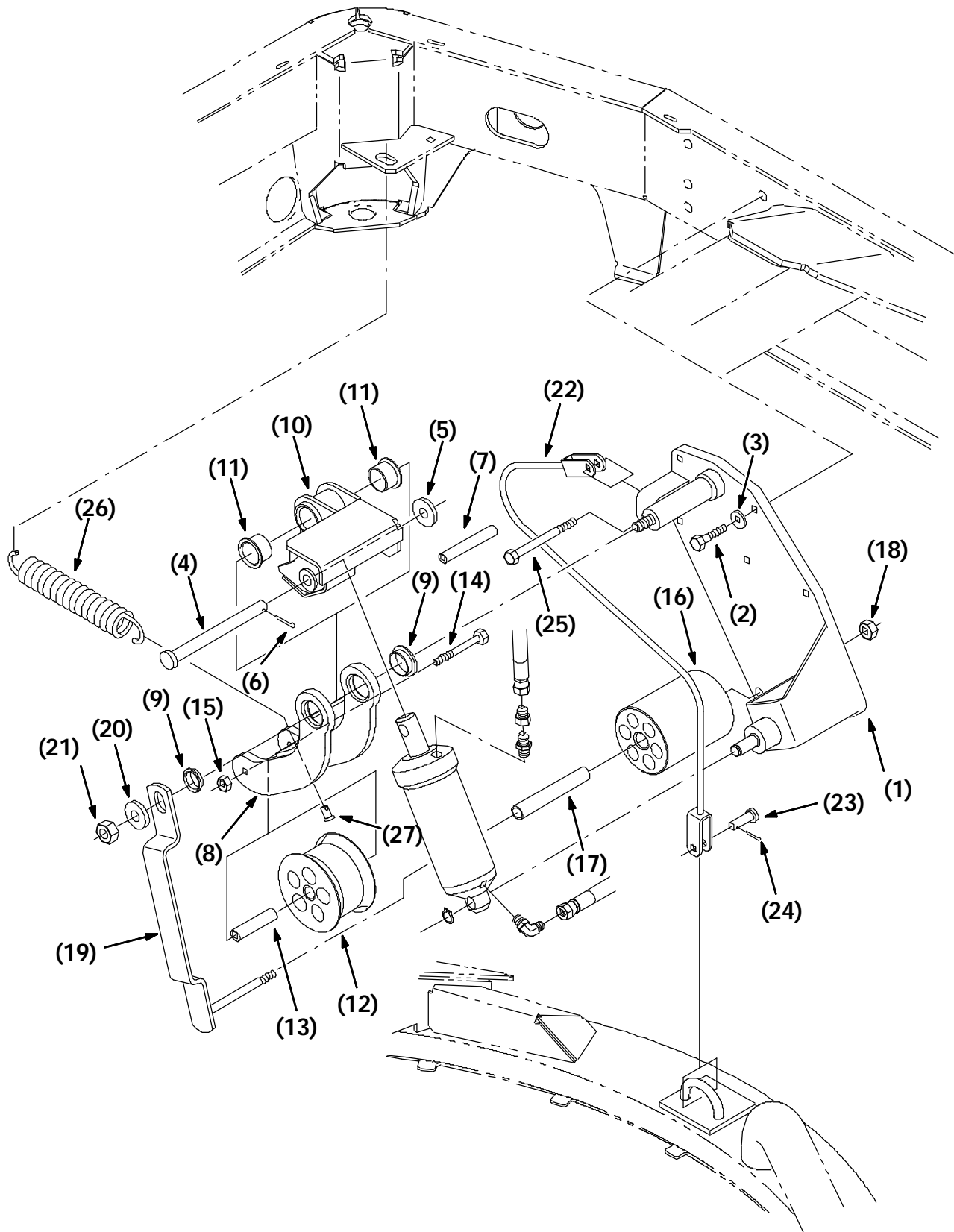


FIG. 1 - Rear Squeegee Lift Assembly.

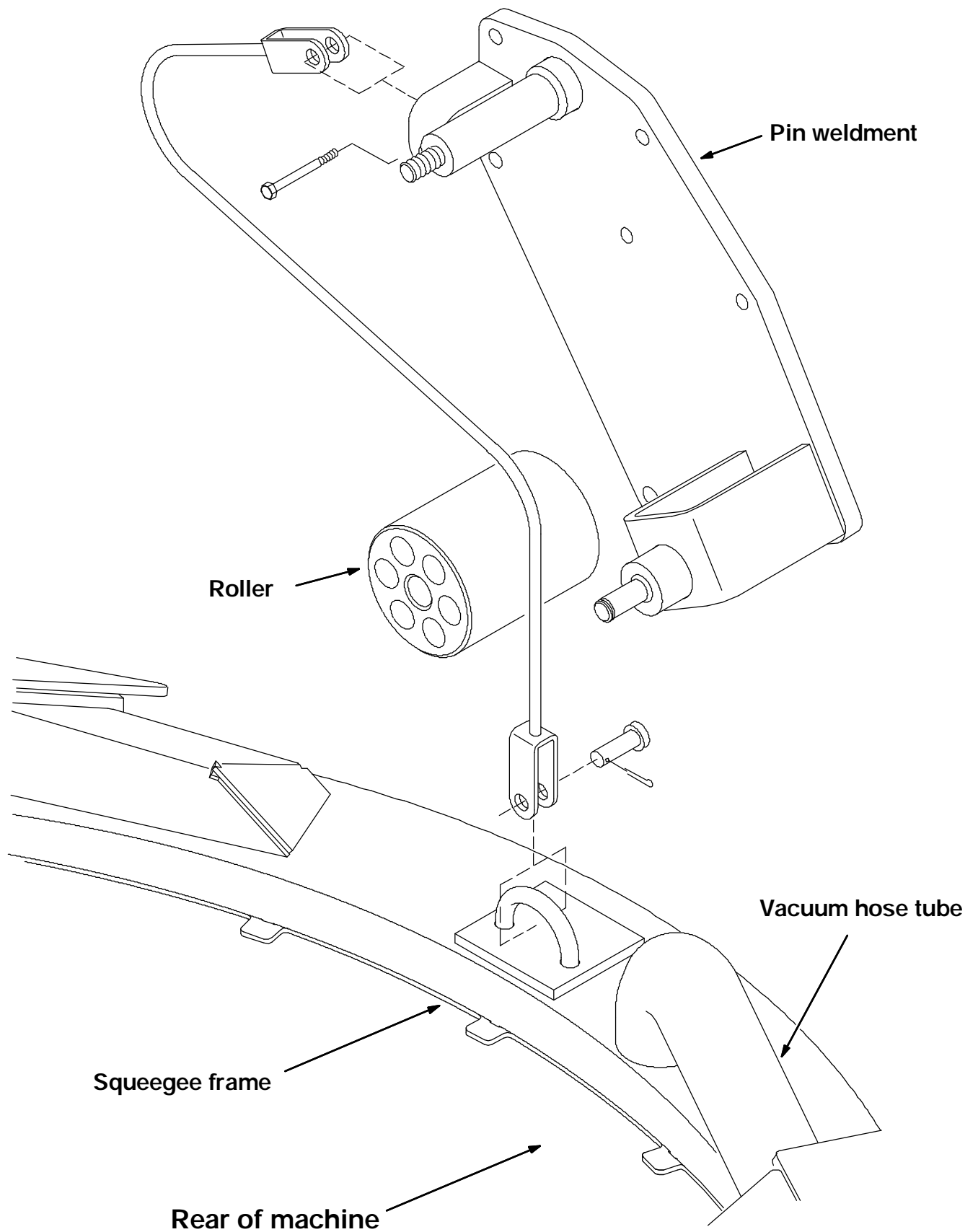


FIG. 2 - Lift Cable Routing

BILL OF MATERIALS FOR SQUEEGEE LIFT REPLACEMENT KIT 365296

Ref.	TENNANT Part No.	Description	Qty.
1	364358	Pin weldment	1
2	09023	M8 hex screw, 35mm	5
3	41186	Washer, belleville	5
4	51225	Clevis pin, 5.5 in. L	1
5	41619	Flat washer, .50 in.	1
6	08175	Cotter pin	1
7	365277	Tube, 2.9 in. L	1
8	365213	Lower bellcrank	1
9	83733	Flange bushing	2
10	365211	Upper bellcrank	1
11	56166	Flange bushing	2
12	364369	Thimble roller	1
13	364368	Tube, 2.27 in. L	1
14	39281	M8 hex screw, 90mm	1
15	08709	M8 nyloc nut	1
16	364353	Roller	1
17	23005	Tube, 4.1 in. L	1
18	41430	M10 nyloc nut	1
19	365271	Rear bracket weldment	1
20	32493	Flat washer, .50 in.	1
21	08711	M12 nyloc nut	1
22	364352	Cable	1
23	86240	Clevis pin, 1.13 in.	1
24	08179	Cotter pin	1
25	39281	M8 hex screw, 90mm	1
26	23007	Extension spring	1
27	41305	Clevis pin, .75 in. L	1

TENNANT COMPANY
P. O. Box 1452
Minneapolis, MN 55440-1452