



INSTRUCTION BULLETIN

No. 340153
Machine: 7200
Published: 04-99/01
System: Scrubbing

NOTE: DO NOT DISCARD the Parts List from the Instruction Bulletin. Place the Parts List in the appropriate place in your machine manual for future reference. Retaining the Parts List will make it easier to reorder individual parts and will save you the cost of ordering an entire kit.

NOTE: Numbers in parenthesis () are reference numbers for parts listed in Bill of Materials.

Installation instructions for kit number 385648

SYNOPSIS / PROBLEM:

This kit contains the parts needed to replace obsolete squeegee links 369407 on the model 7200 scrubber. The new links are larger and should eliminate any bending or damage experienced with the original links.

Please follow step-by-step instructions.

SPECIAL TOOLS / CONSIDERATIONS: None

(Estimated time to complete: 1 hour)

PREPARATION:

(Refer to FIG. 1 and 2)

1. Start machine.
2. Lower rear squeegee.
3. Turn off machine.

FOR SAFETY: Before leaving or servicing machine, stop on level surface and set parking brake. Then turn off machine and remove key.

INSTALLATION:

(Refer to FIG. 1 and 2)

1. Remove and discard old squeegee links and mounting hardware. (Refer to FIG.1)
2. Assemble 4 sets of threaded rod(1) with a jam nut(3) and ball joint(2) on each end.
(Refer to FIG.1 and 2)
3. Set ball joints(2) to 13" center-line to center-line, or 13.875" overall. (Refer to FIG.2)
4. Install new squeegee links at same location and orientation as original links, using lock washer(5), and nut(4) at each of the four mounting locations. (Refer to FIG.1)
5. Start machine.
6. Raise rear squeegee.
7. Check rear squeegee for proper operation. Reset roll-out or tip adjustment if necessary.

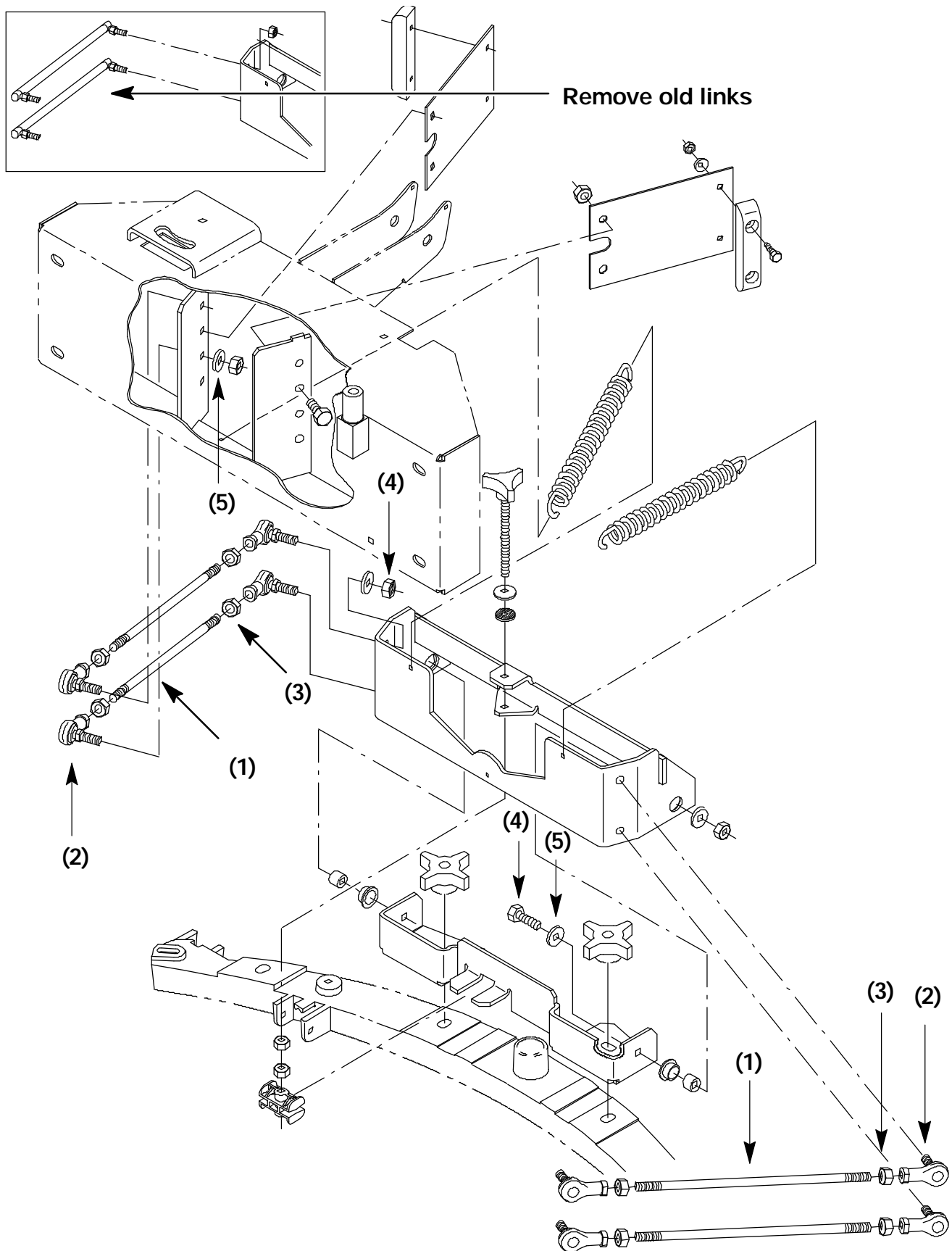


FIG. 1 Mounting squeegee links repair kit 385648

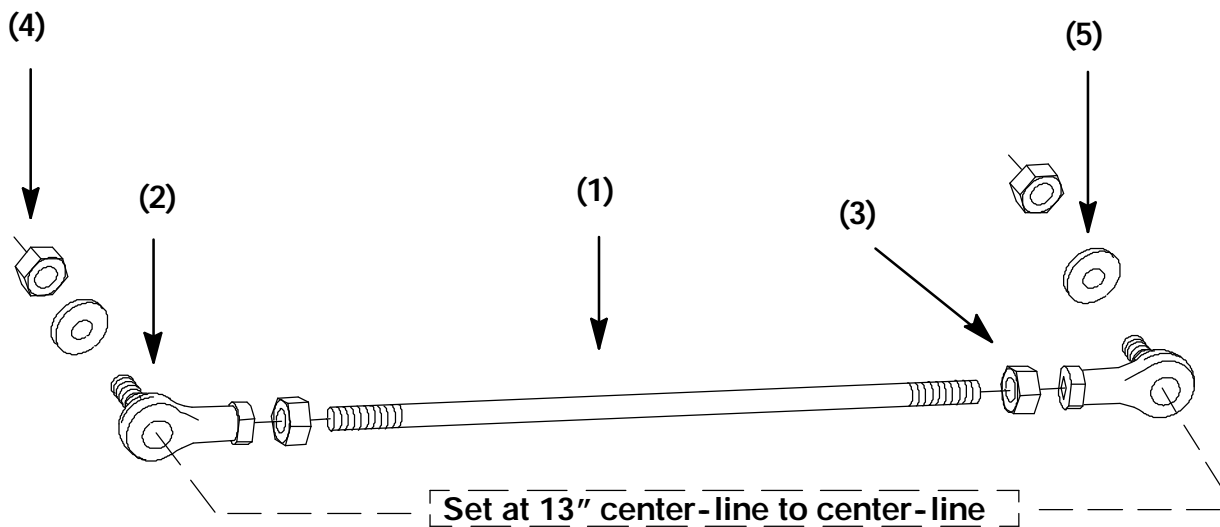


FIG. 2 Squeegee links repair kit 385648

BILL OF MATERIALS FOR SQUEEGEE LINKS REPAIR KIT 385648

Ref.	TENNANT Part No.	Description	Qty.
1	385647	Rod, threaded .31-24 11.25" lng.	4
2	36466	Rod, end w/stud .312-24	8
3	20170	Nut, hex jam .31-24	8
4	32960	Nut, hxlocnyln .31-24 reg pltd	8
5	43952	Washer, loc int. .31	8

TENNANT COMPANY
P. O. Box 1452
Minneapolis, MN 55440-1452