



INSTRUCTION BULLETIN

No. 340143
Machine: 7200
Published: 06-2006
Rev: 01

NOTE: DO NOT DISCARD the Parts List from the Instruction Bulletin. Place the Parts List in the appropriate place in the machine manual for future reference. Retaining the Parts List will make it easier to reorder individual parts and will save the cost of ordering an entire kit.

NOTE: Numbers in parenthesis () are reference numbers for parts listed in Bill of Materials.

Installation Instructions for Kit number 385634

SYNOPSIS:

This kit contains the parts needed to install a power wand kit on the 7200 scrubbers equipped with a rollout battery option.

Please follow step-by-step instructions.

SPECIAL TOOLS / CONSIDERATIONS:

(Estimated time to complete: 3 hours)

PREPARATION:

1. Start the machine and lower the rear squeegee. Turn off the machine.
2. Drain the solution and recovery tanks.

FOR SAFETY: Before leaving or servicing machine, stop on level surface, turn off machine, set parking brake, and remove key.

3. Disconnect battery cables from machine.



WARNING: Always disconnect battery cables from machine before working on electrical components.

4. Open the electrical control panel in operators compartment.

INSTALLATION: (Refer to FIG. 1 through 7)

1. Remove two screws and pivot electrical panel out for access.
2. Install the switch (3), switch boot (33), circuit breaker (1), and circuit breaker boot (2) into the electrical panel. (Refer to FIG. 1)
3. Connect the switch (3) to wires 94/PUR, 13G/BLK, 9A/YEL, and 9/YEL. (Refer to FIG. 7)
4. Connect the circuit breaker (1) to wires 9A/YEL and 6D/BLU. (Refer to FIG. 7)
5. Close the electrical panel. (Refer to FIG. 1)
6. Use the dimensions in FIG. 2 to mark and drill the power wand bag (6) mount holes in the top of the tank cover. (Refer to FIG. 2)
7. Install the power wand bag (6) onto the top of the tank cover using the four plastic rivets (7). (Refer to FIG. 3)

8. Remove the plastic plugs from the two holes on top of the right side machine bumper. (Refer to FIG. 3)
9. Install the brush tray (16) on the right side bumper using two screws (17), fender washers (19), and nuts (18). Hand tighten. (Refer to FIG. 3)
10. Install the power wand bracket (8) on the seat support frame using two screws (10), washers (12), and nuts (11). Hand tighten. (Refer to FIG. 3)
11. Install the larger part of the flex draw latch (13) onto the bracket (8) using two screws (15). Hand tighten. (Refer to FIG. 3)
12. Install the second bracket (9) onto the first bracket (8) using two screws (10), washers (12), and nuts (11). Hand tighten. (Refer to FIG. 3)
13. Install the smaller part of the flex draw latch (13) onto the bracket (9) using one flat head screw (14). Hand tighten. (Refer to FIG. 3)
14. Install the 90° fitting (24) into the tee fitting (23). (Refer to FIG. 4)
15. Install the shorter vinyl hose (30) onto the 90° fitting (24). Install and tighten one worm clamp (31). (Refer to FIG. 4)
16. Locate the solution drain line under the solution tank. Cut the hose a few inches from the tank fitting. Install the new tee fitting (23) and two worm drive clamps (32) between the ends of the cut hose. Tighten the clamps. (Refer to FIG. 4)
17. Install the longer vinyl hose (29) and one clamp (31) onto the outlet port on the new pump (20). (Refer to FIG. 4)
18. Install the pump (20) into the machine using the two screws (22) and nuts (21). Route the vinyl hose (29) through the hose hole in the frame. (Refer to FIG. 4)
19. Install one clamp (31) and the open end of the shorter vinyl hose (30) onto the inlet port of the new pump (2). (Refer to FIG. 4)
20. Locate the electrical connector in the main harness with the wires 13V/BLK and 94/PUR. Plug the new pump (20) into the connector. (Refer to FIG. 4 and 7)
21. Install the bulkhead fitting (26) onto the mount bracket (25). (Refer to FIG. 4)
22. Install the small straight fitting (28) into the bulkhead fitting (26). Hand tighten. (Refer to FIG. 4)
23. Install the brass fitting (27) into the bulkhead fitting (26). Hand tighten. (Refer to FIG. 4)
24. Install the open end of the longer vinyl hose (29) and one clamp (31) onto the straight fitting (28). (Refer to FIG. 4)
25. Install the mount bracket onto the machine frame. (Refer to FIG. 4)
26. Install the power wand hose (4) into the bag (6). (Refer to FIG. 3 and 5)
27. Use the draw latch (13) to install the power wand assembly (34) on the side of the machine. (Refer to FIG. 3 and 6)

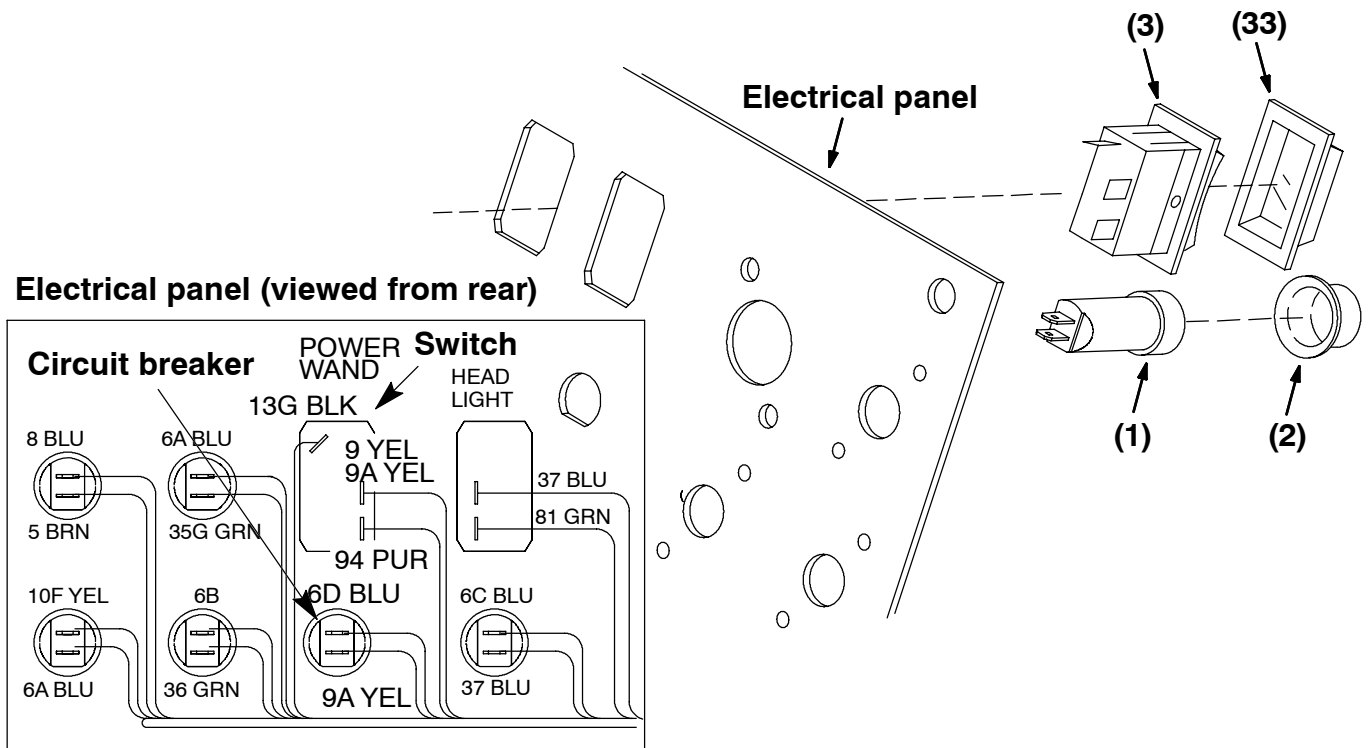


FIG. 1 - Switch And Circuit Breaker

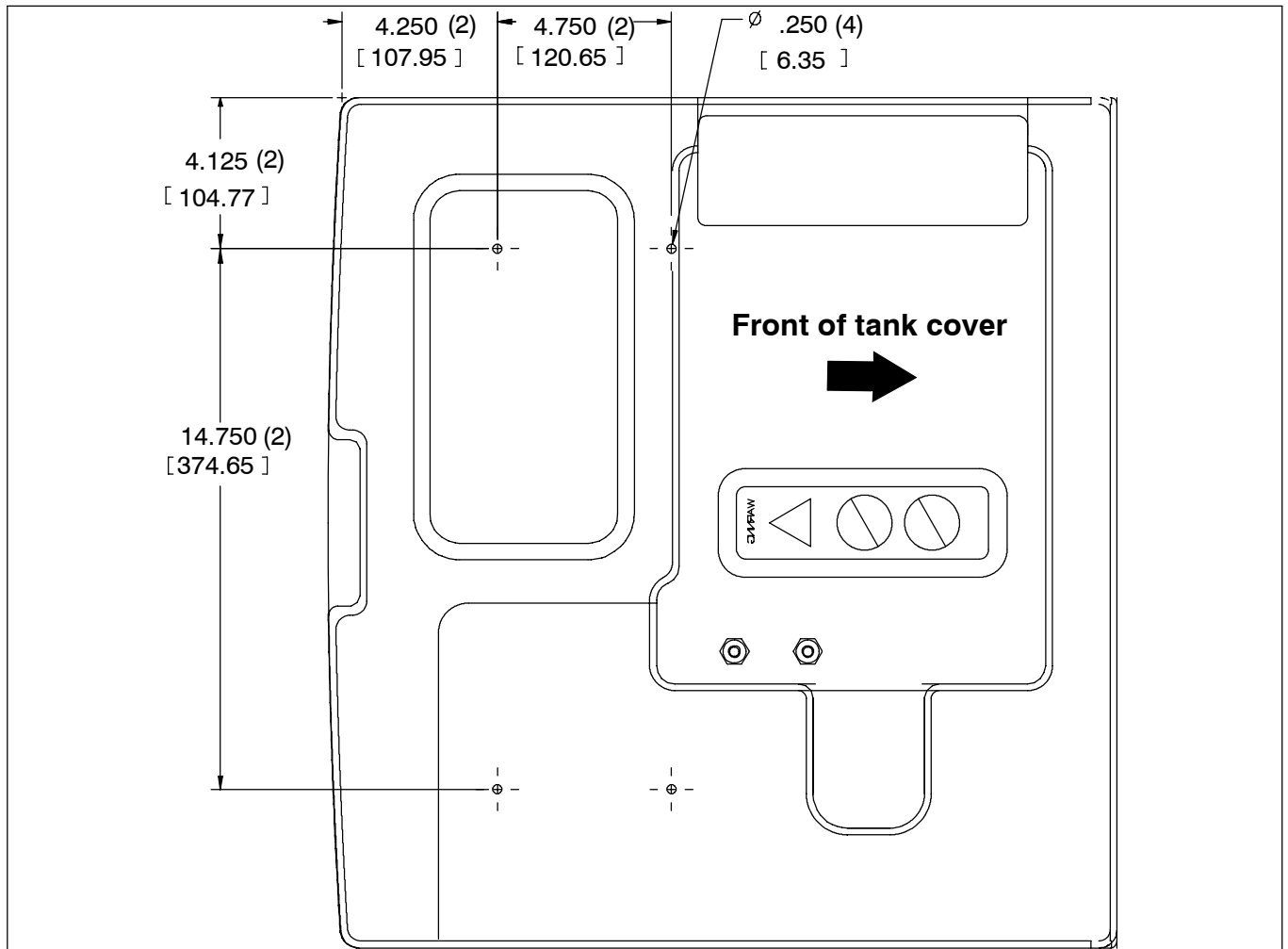


FIG. 2 - Hose Bag Mounting Hole Dimensions

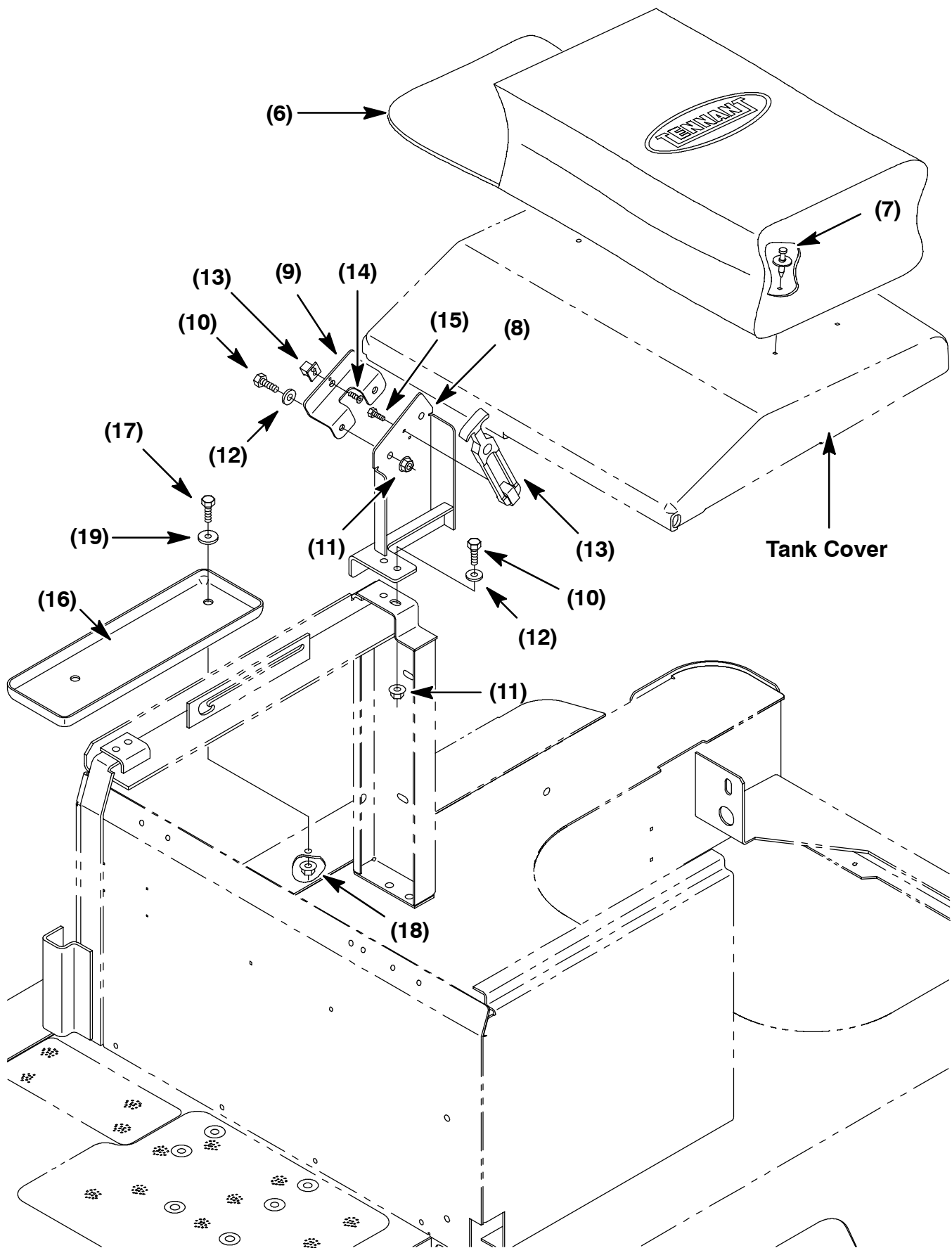


FIG. 3 - Power Wand Mounting Assembly

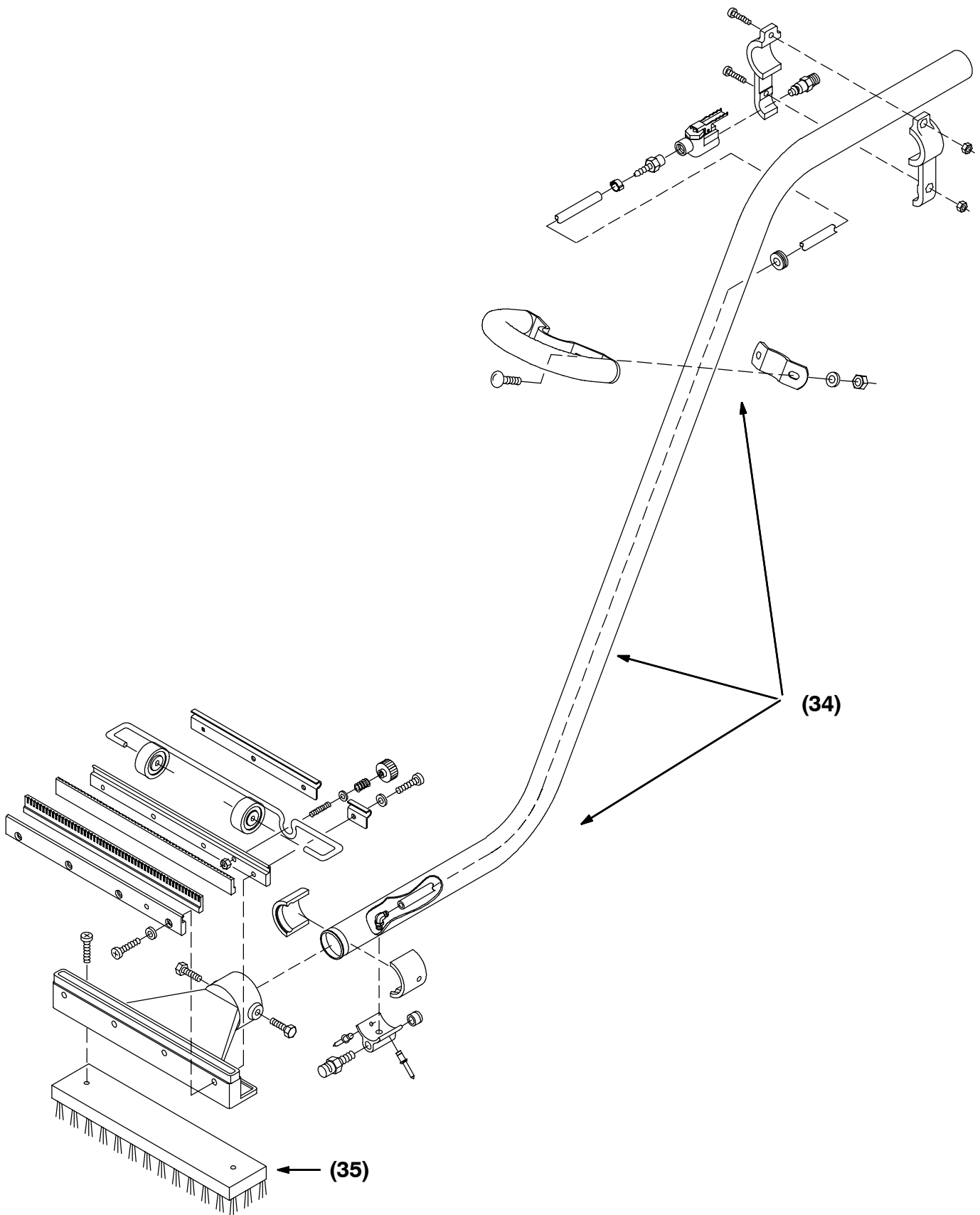


FIG. 6 - Power Wand Assembly

BILL OF MATERIALS FOR POWER WAND KIT 223282

Ref.	TENNANT Part No.	Description	Qty.
1	57164	Circuit breaker, 10amp	1
2	57751	Circuit breaker boot	1
3	65557	Rocker switch, SPST, lighted	1
4	65341	Hose and cuff assembly	1
5	12694	Plastic fitting, straight	1
6	65580	Power wand bag	1
7	72968	Plastic rivet	4
8	385651	Power wand bracket	1
9	223490	Power wand bracket	1
10	16931	M8 hex screw, 20mm	4
11	07791	M8 flange nut	4
12	32491	5/16 in. flat washer	4
13	223522	Flexible draw latch	1
14	09120	M5 flat screw, 16mm	1
15	09252	M5 hex screw, 20mm	2
16	385632	Brush tray	1
17	16931	M8 hex screw, 20mm	2
18	07791	M8 flange nut	2
19	30013	5/16 in. fender washer	2
20	223496	Water pump, 36 volts	1
21	09739	Nut, Hex, Lock, M5 X 0.80, NL, SS	2
22	09738	Screw, Hex, M5 X 0.8 X 12, SS	2
23	76075	Plastic fitting, tee	1
24	79484	Plastic fitting, 90°	1
25	223521	Mount bracket	1
26	78122	Bulkhead fitting	1
27	65342	Brass fitting, quick connect, female	1
28	49186	Plastic fitting, straight	1
29	223523	Vinyl hose	1
30	223640	Vinyl hose	1
31	43844	Worm drive clamp	4
32	11399	Worm drive clamp	2
33	57807	Rocker switch cover seal	1
34	65340	Wand assembly	1
35	65582	Scrub brush, rectangular	1

TENNANT COMPANY
P. O. Box 1452
Minneapolis, MN 55440-1452