



INSTRUCTION BULLETIN

No. 340140
Machine: 527, 527-II, 528
Published: 1-03
Rev. 01

NOTE: DO NOT DISCARD the Parts List from the Instruction Bulletin. Place the Parts List in the appropriate place in your machine manual for future reference. Retaining the Parts List will make it easier to reorder individual parts and will save you the cost of ordering an entire kit.

NOTE: Numbers in parenthesis () are reference numbers for parts listed in Bill of Materials.

Installation instructions for kit number 370164

SYNOPSIS / PROBLEM:

This kit contains the parts needed to replace the rear squeegee caster on the model 527/528 scrubber. Please follow step-by-step instructions.

SPECIAL TOOLS / CONSIDERATIONS: None

(Estimated time to complete: .5 hour)

INSTALLATION:

(Refer to FIG. 1)

FOR SAFETY: Before leaving or servicing machine, stop on level surface and set parking brake. Then turn off machine and remove key.

1. Make sure the rear squeegee is in the raised position.
2. Remove the debris tray from the scrub head.
3. Remove the old caster from the existing mount bracket.
4. Remove the old mount bracket from the squeegee frame and discard the old hardware.
5. Install the hex screw (3) and washer (4) up through the bottom of the bracket and through the squeegee tab. Install the nut (5) and washer (4). Tighten the hardware.
6. Install the new caster (1) onto the mount bracket (2). Install the jam nut onto the caster threaded stem--do not tighten yet.
7. Install the new caster mount bracket (2) **under the tab protruding out of the squeegee frame**. The vertical side of the new bracket (2) should be firmly pushed up against the squeegee frame. (the nut on the bracket should be facing up)
8. Adjust the caster height to 4.125 inch from the bottom of the wheel to the bottom of the mount bracket (2) offset. Tighten the jam nut on the threaded stem.
9. Operate the machine and check the rear squeegee for proper operation--readjust the new caster if necessary.

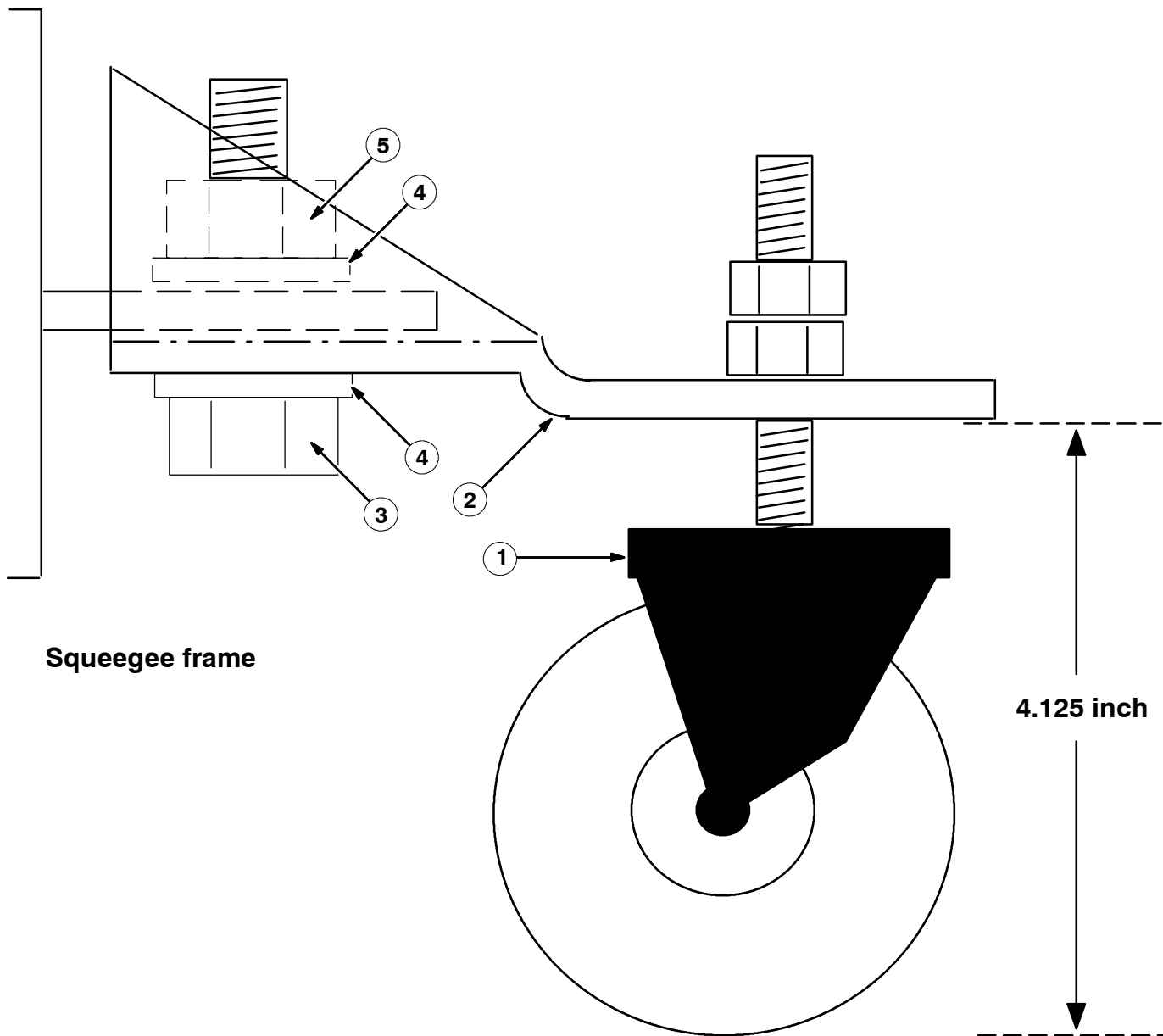


FIG. 1 - New Caster Assembly

BILL OF MATERIALS FOR REAR SQUEEGEE CASTER KIT 370164

Ref.	TENNANT Part No.	Description	Qty.
1	370161	Swivel caster (with jam nut)	1
2	370163	Caster mount bracket	1
3	02995	Screw, hex, 3/8-16 X 1.25, Ss	1
4	01686	Washer, 3/8, Ss	2
5	59156	Nut, hex, loc 3/8, Ss	1

TENNANT COMPANY
P. O. Box 1452
Minneapolis, MN 55440-1452