



INSTRUCTION BULLETIN

No. 340121
Machine: 8200 / 8210
Published: 1-98/00
System: SCRUBBING

NOTE: DO NOT DISCARD the Parts List from the Instruction Bulletin. Place the Parts List in the appropriate place in your machine manual for future reference. Retaining the Parts List will make it easier to reorder individual parts and will save you the cost of ordering an entire kit.

NOTE: Numbers in parenthesis () are reference numbers for parts listed in Bill of Materials.

Installation instructions for kit number 365147.

SYNOPSIS / PROBLEM:

This kit contains the parts needed to replace the rear squeegee lift cable on the model 8200 / 8210 sweeper/scrubber.

Please follow step-by-step instructions.

SPECIAL TOOLS / CONSIDERATIONS: Jacking up the rear of the machine and placing it on jack stands is necessary to install this kit.

(Estimated time to complete: 1 hour).

INSTALLATION OF REAR SQUEEGEE LIFT-CABLE REPLACEMENT:

(Refer to FIG. 1)

1. Start the machine and lower the rear squeegee, then turn the machine power off.

FOR SAFETY: Before leaving or servicing machine, stop on level surface and set parking brake. Then turn off machine and remove key.

2. Raise the rear of the machine and install jack stands under the machine frame.

FOR SAFETY: Always use jack stands to prevent machine from rolling. Do not rely on scissors, automotive, or hydraulic jacks which could slip, allowing machine to fall.

3. Pull the vacuum hose off the tube on the squeegee frame.
4. Remove the hair pin and clevis pin holding the lower clevis on the squeegee lift cable to the squeegee frame. (Refer to FIG. 1)
5. Remove and discard the long hex screw holding the upper clevis on the squeegee lift cable to the machine frame. Note the routing of the old lift cable and remove it from the machine. (Refer to FIG. 1)
6. Install the new squeegee lift cable (1) in the machine. Make sure to route the new cable the same way the old one was routed. (Refer to FIG. 1)
7. Install the new long hex screw (3) in the upper clevis of the new lift cable. Tighten to 18 - 24 Nm (15 - 20 ft lb). (Refer to FIG. 1)
8. Install the clevis pin (2) and hair pin the lower clevis of the new cable and squeegee frame. (Refer to FIG. 1)

9. Plug the vacuum hose onto the tube on the squeegee frame. (Refer to FIG. 1)
10. Remove the jack stands and lower the machine.
11. Start the machine and operate the rear squeegee. Check for proper operation of the new cable.

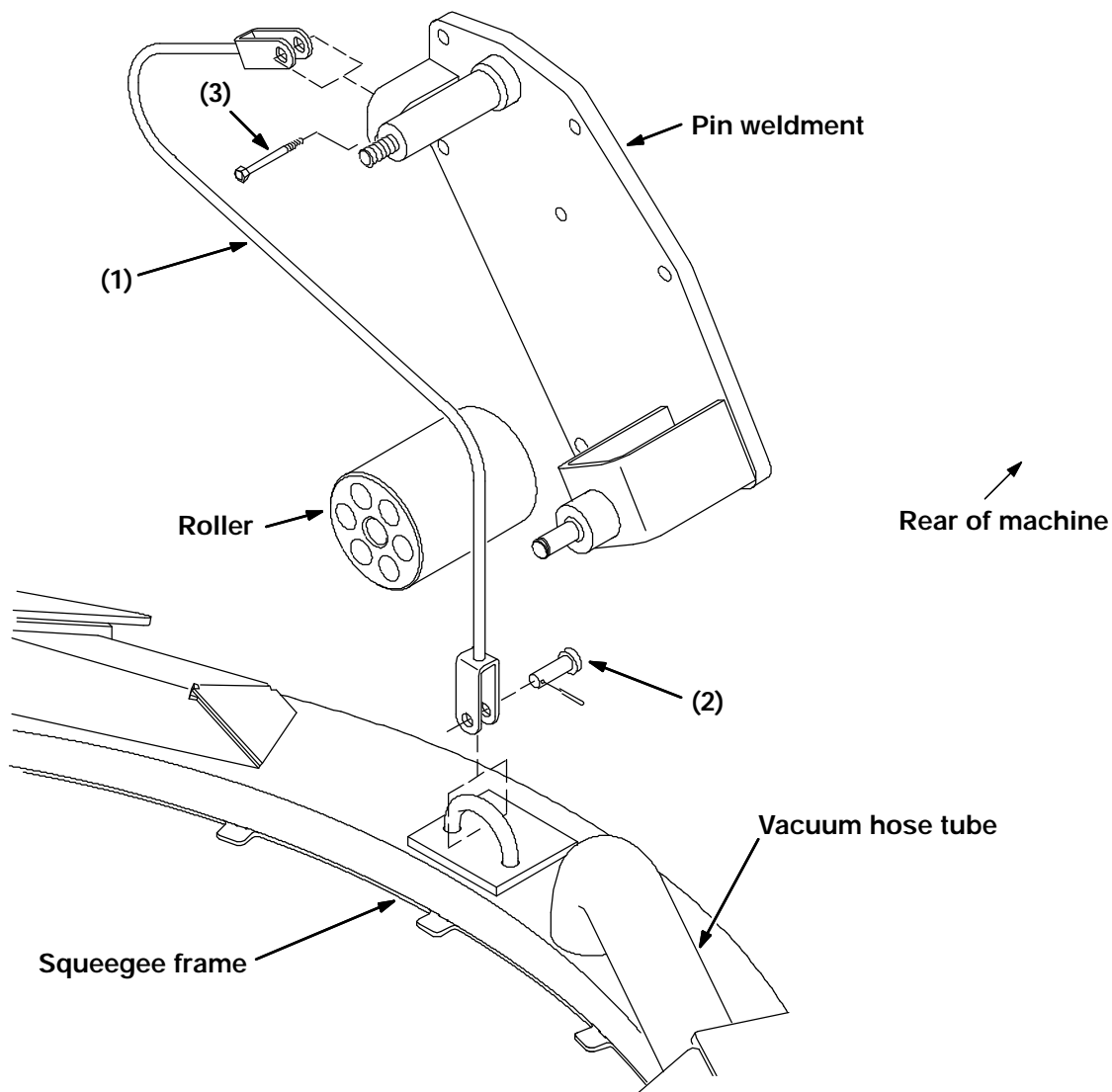


FIG. 1 - Rear Squeegee Lift-Cable Replacement

BILL OF MATERIALS FOR KIT NUMBER 365147

Ref.	TENNANT Part No.	Description	Qty.
1	364352	Cable	1
2	86240	Pin, Clevis, 0.375 DIA x 1.13 LG	1
3	39281	Screw, HEX M8 x 1.25 90	1

TENNANT COMPANY
P. O. Box 1452
Minneapolis, MN 55440-1452