



## INSTRUCTION BULLETIN

No. 340120  
Machine: 8200/8210  
Published: 4-98/00  
System: SCRUBBING

**NOTE: DO NOT DISCARD the Parts List from the Instruction Bulletin. Place the Parts List in the appropriate place in your machine manual for future reference. Retaining the Parts List will make it easier to reorder individual parts and will save you the cost of ordering an entire kit.**

*NOTE: Numbers in parenthesis ( ) are reference numbers for parts listed in Bill of Materials.*

Installation instructions for kit number 365144.

### **SYNOPSIS / PROBLEM:**

This kit contains the parts needed to replace the side squeegee assemblies on a model 8200/8210 sweeper/scrubber equipped with a **MaxPro 1200 (three brush) scrubhead**. Please follow step-by-step instructions.

**SPECIAL TOOLS / CONSIDERATIONS:** None.

(Estimated time to complete: 1 hour).

### **INSTALLATION OF REPLACEMENT SIDE SQUEEGEE ASSEMBLIES:**

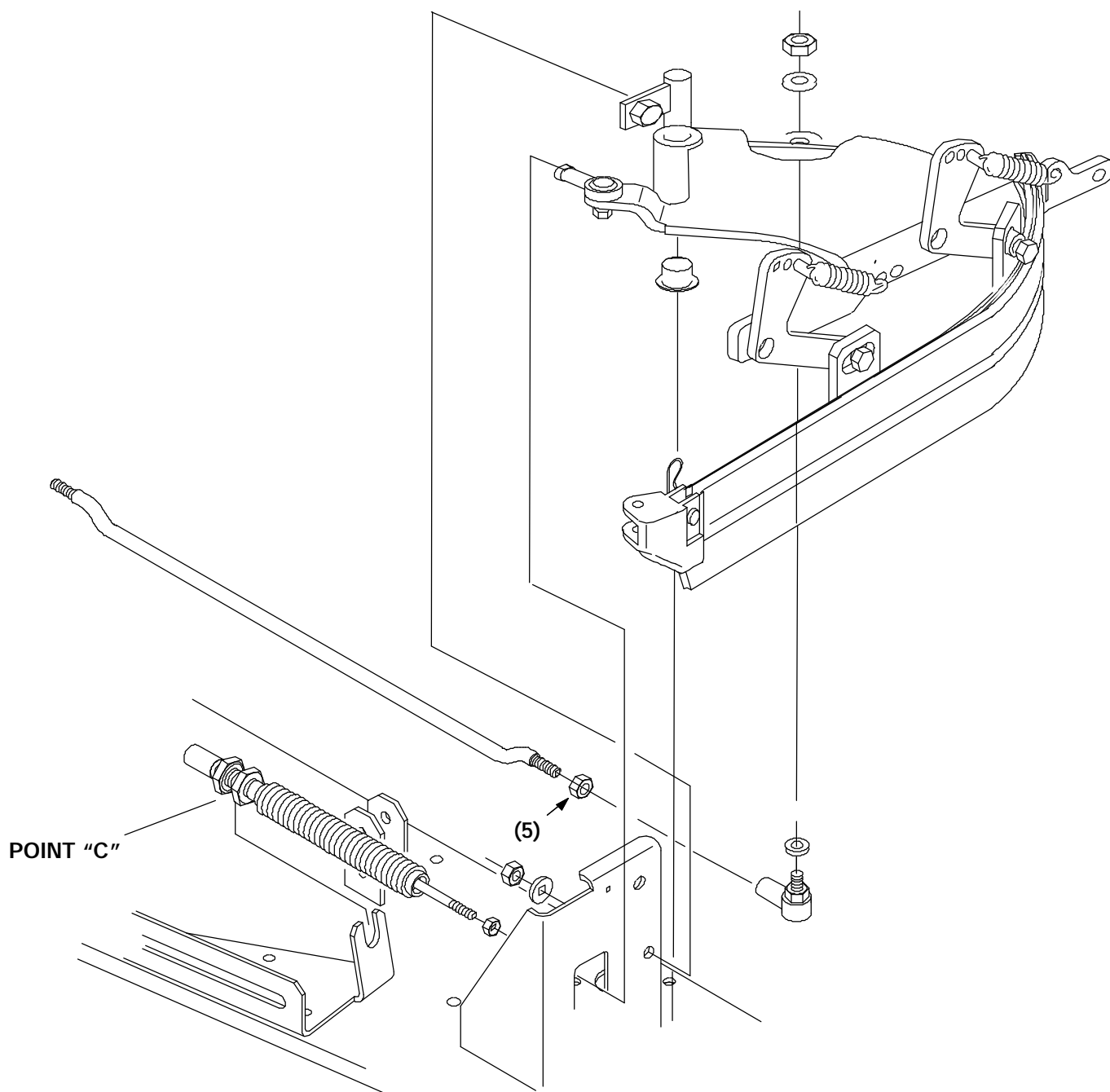
(Refer to FIG. 1 and 2)

**FOR SAFETY: Before leaving or servicing machine, stop on level surface and set parking brake (if equipped on machine). Then turn off machine and remove key.**

1. Remove the side squeegee stabilizing rod at the left side squeegee. *Refer to Fig. 1.*
2. Remove and discard the side squeegee assemblies. *Refer to Fig. 1 and 2.*
3. Install new side squeegee assemblies (1) and (2).

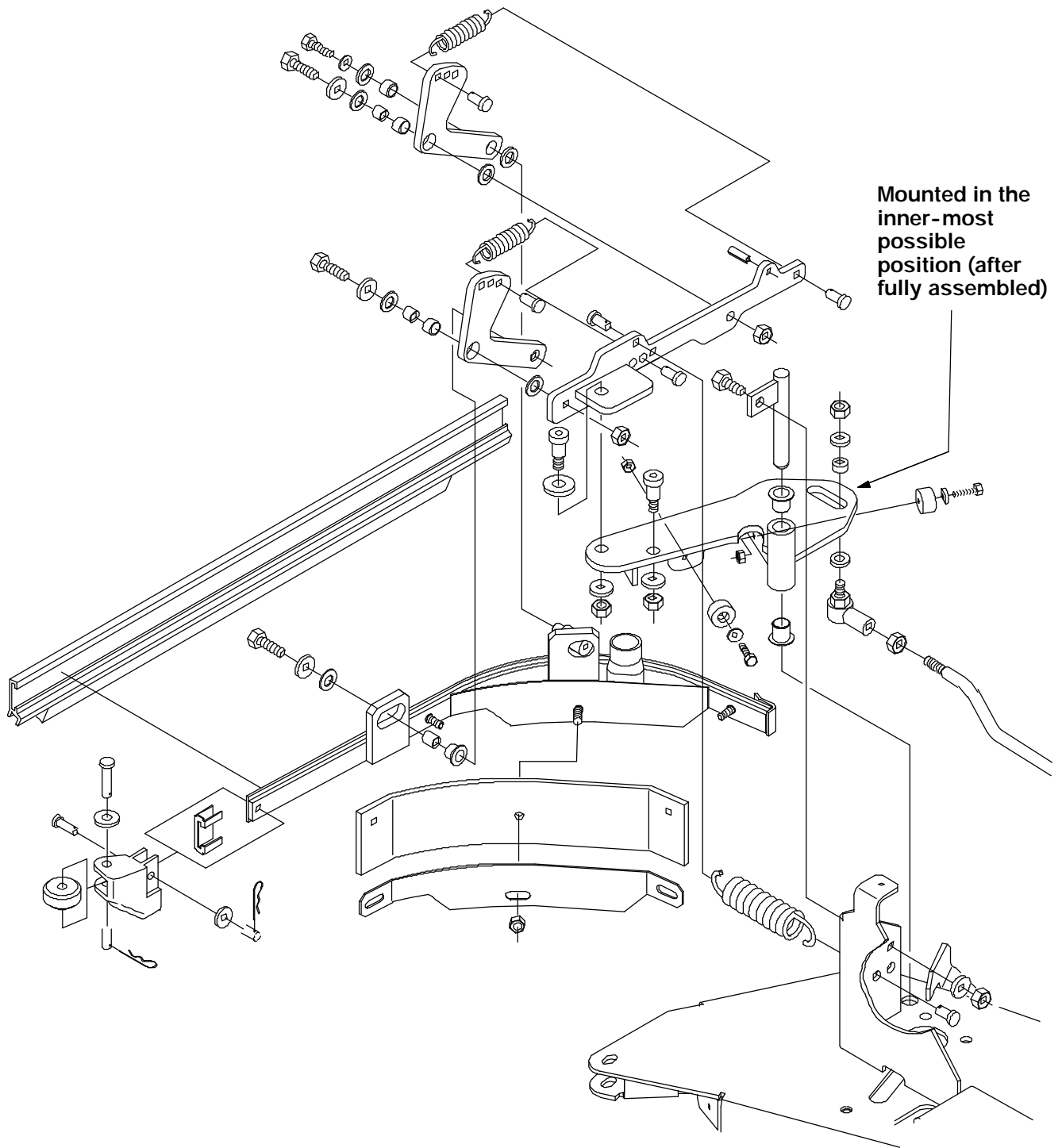
*NOTE: Secure the rod end in the inner-most position of the slot in the mounting plate. Refer to Fig. 2.*

4. Install the side squeegee stabilizing rod into the hole in the left hand side squeegee mount plate with the old hardware. *Refer to Fig. 1.*
5. Tighten all hardware.
6. The front tip of the left side squeegee should point away from the machine approximately 2° while scrubbing. If not, make sure the cable ball joint is threaded all the way onto the cable and tightened with a jam nut. If the squeegee tip is still not pointing outward, adjust at point "C." **DO NOT** adjust at ball joint. *Refer to Fig. 1.*



**FIG. 1 - Replacement of Side Squeegee Assemblies and Installation of Side Squeegee Stabilizing Rod on Left Hand Side of Machine**

TENNANT COMPANY  
P. O. Box 1452  
Minneapolis, MN 55440-1452



**FIG. 2 - Installation of Side Squeegee Stabilizing Rod on Right Hand Side of Machine**  
**BILL OF MATERIALS FOR KIT NUMBER 365144**

Ref.	TENNANT Part No.	Description	Qty.
1	365143	Squeegee assembly, LH	1
2	365144	Squeegee assembly, RH	1