



# INSTRUCTION BULLETIN

No. 340090  
Machine: 7400  
Published: 8-97/00  
System: SCRUBBING

**NOTE: DO NOT DISCARD the Parts List from the Instruction Bulletin. Place the Parts List in the appropriate place in your machine manual for future reference. Retaining the Parts List will make it easier to reorder individual parts and will save you the cost of ordering an entire kit.**

*NOTE: Numbers in parenthesis ( ) are reference numbers for parts listed in Bill of Materials.*

Installation Instructions for Kit number 20836

## **SYNOPSIS / PROBLEM:**

This kit contains the parts needed to install a new detergent hose to allow the re-routing of the detergent tank line. In some situations the solution tee assembly and the solenoid valves become clogged. This kit removes the detergent hose from the solution line tee assembly and connects it to the new by-pass tee. This new hose routing allows the detergent line to bypass the solution line tee assembly and will reduce the chances of it clogging. Please follow step-by-step instructions.

## **SPECIAL TOOLS / CONSIDERATIONS:** None

(Estimated time to complete: 1 hour)

## **INSTALLATION:**

(Refer to FIG. 1 and 2)

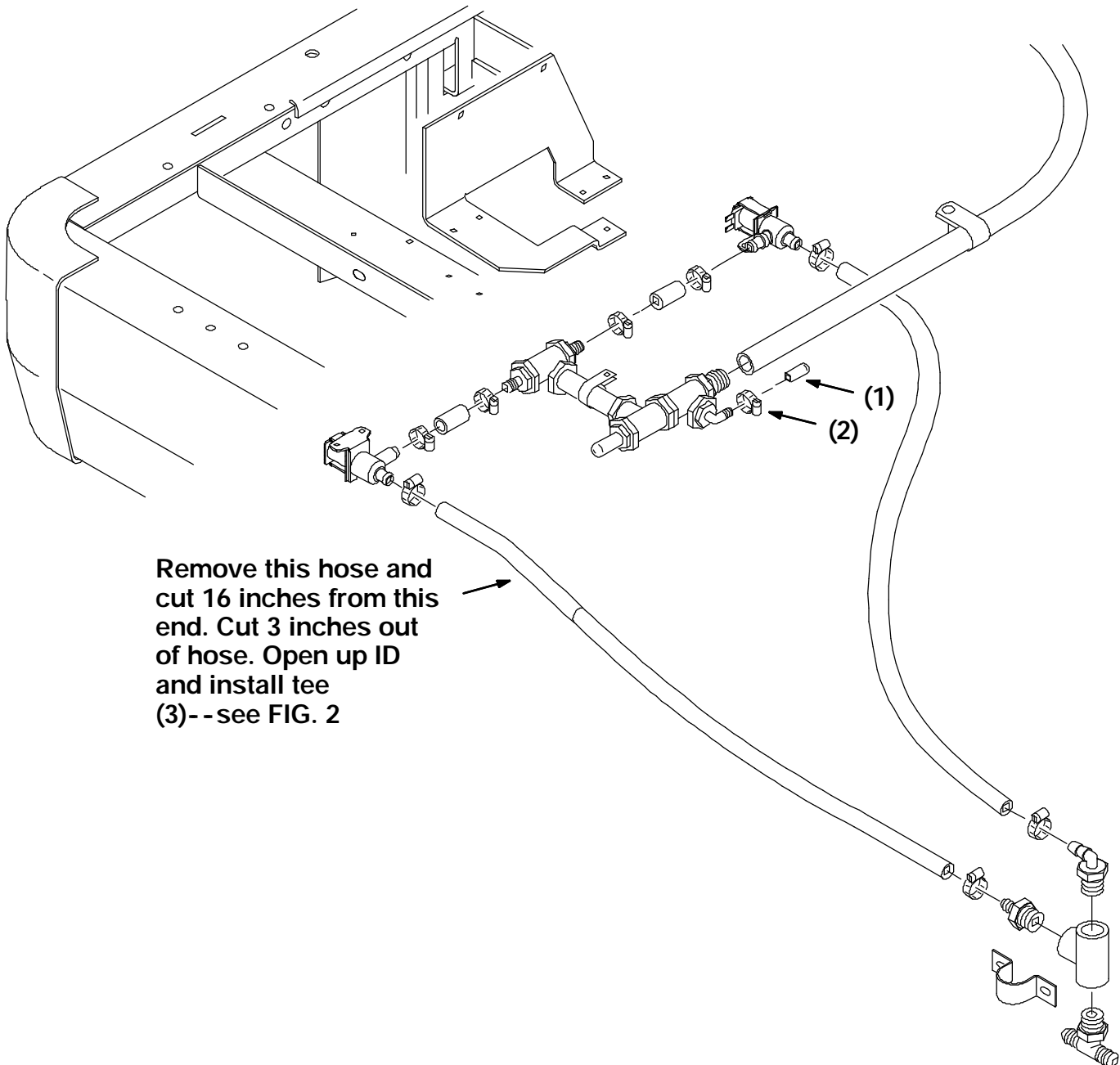
1. Drain the solution tank.
2. Turn the key on, push the button for the scrubbing, turn the solution control on to drain the rest of the solution left in the lines.
3. Turn off the machine.

**FOR SAFETY: Before leaving or servicing machine, stop on level surface and set parking brake. Then turn off machine and remove key.**

4. Remove the floor plate from the operators compartment.
5. Locate the solution control fitting assembly. Remove the clear vinyl line that runs to the detergent pump. (Refer to FIG. 1 and 2)
6. Install the neoprene cap (1) on the elbow in place of the vinyl line. Use one of the worm drive clamps (2) to secure the cap. (Refer to FIG. 1 and 2)
7. Remove the vinyl line that runs from the front solenoid valve to the lower hose on the tee at the scroll. Cut the hose at 16 inches from the end. (Refer to FIG. 1 and 2)
8. Cut and discard 3 inches out of the 16 inches that was cut off in the previous step. Install the tee (3) into the hose. Use one of the worm drive clamps (2) to secure the hose. (Refer to FIG. 1 and 2)

*NOTE: You may have to open the end of the hose ID so the tee fitting will fit. (Refer to FIG. 1 and 2)*

9. Install the new hose (5) onto the new tee fitting (3). Use one of the worm drive clamps (2) to secure the hose. (Refer to FIG. 1 and 2)
10. Install the new straight fitting (4) into the open end of the new hose (5). Use one of the worm drive clamps (2) to secure the hose. Install the assembly back in the machine from the solenoid valve to the tee on the scroll. (Refer to FIG. 1 and 2)



**FIG. 1 - Solution Lines**

11. Locate and install the clear hose that you removed from the solution control fitting assembly into the adaptor on the new piece of hose (5). Use one of the worm drive clamps (2) to secure the hose. (Refer to FIG. 1 and 2)

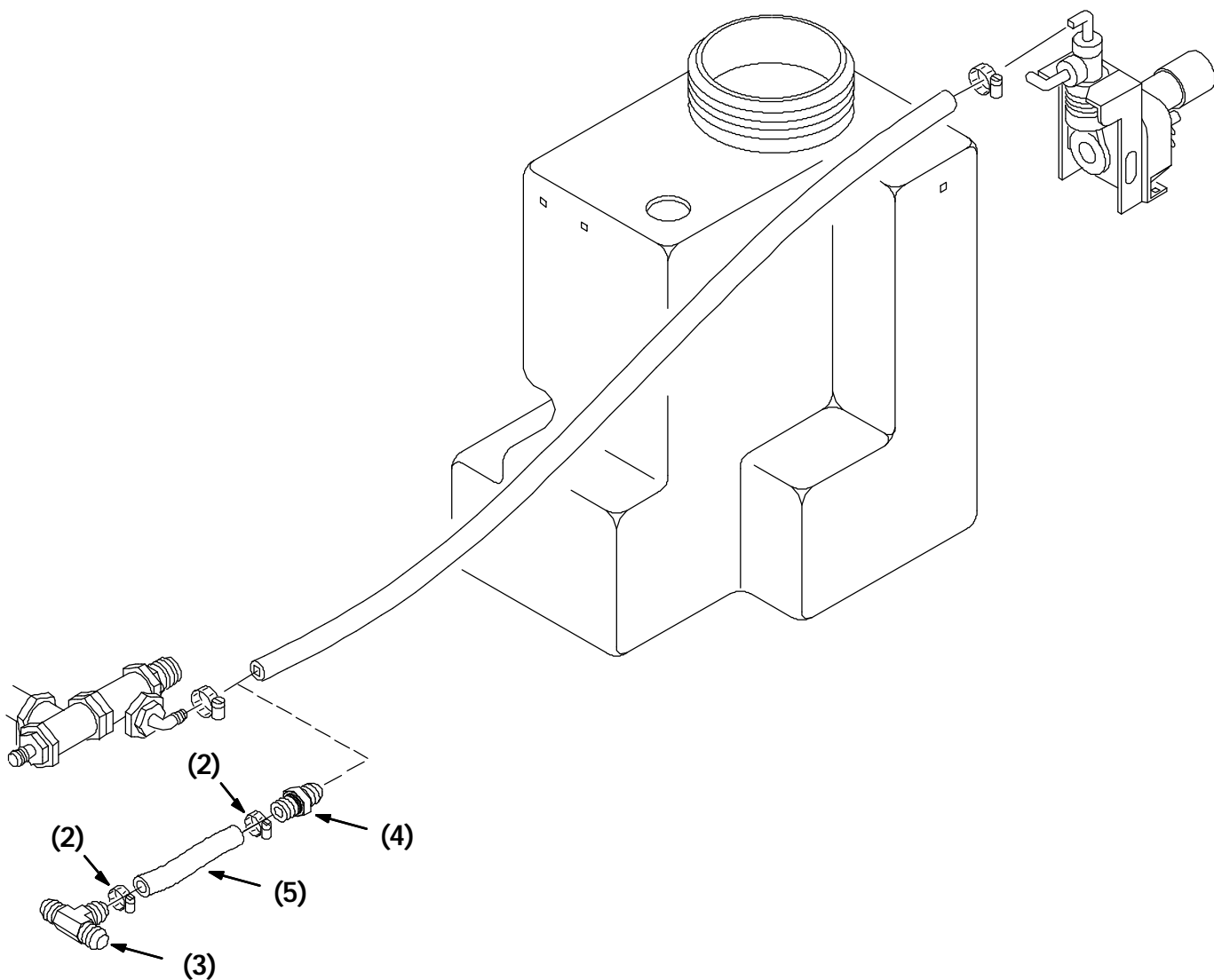


FIG. 2 - Detergent Line

**BILL OF MATERIALS FOR DETERGENT HOSE KIT 20836**

Ref.	TENNANT Part No.	Description	Qty.
1	20806	Neoprene cap	1
2	54333	Worm drive clamp	6
3	45488	Tee fitting	1
4	222375	Straight fitting	1
5	45487-2	Vinyl hose	1

TENNANT COMPANY  
P. O. Box 1452  
Minneapolis, MN 55440-1452