



INSTRUCTION BULLETIN

No. 340080
Machine: 8010
Published: 12-02
Rev. 02

NOTE: DO NOT DISCARD the Parts List from the Instruction Bulletin. Place the Parts List in the appropriate place in your machine manual for future reference. Retaining the Parts List will make it easier to reorder individual parts and will save you the cost of ordering an entire kit.

NOTE: Numbers in parenthesis () are reference numbers for parts listed in Bill of Materials.

Installation Instructions for Kit number 363907

SYNOPSIS / PROBLEM:

This kit contains the parts needed to replace the Actuator part # 363621 on the model 8010 sweeper/scrubber. This actuator is used to raise and lower the main brush and side brush. It is also used to open and close the hopper dump door.

Please follow step-by-step instructions.

SPECIAL TOOLS / CONSIDERATIONS: None

NOTE: If the actuator motor does not shut off in the extended position - - the motor will burn out or the circuit breaker will pop. To avoid this - - rotate the actuator tube clockwise or counterclockwise, in or out as necessary, until the length of the actuator is the correct length to activate the switch with the door open/closed.

(Estimated time to complete: 1 hour)

TO REPLACE MAIN BRUSH LIFT ACTUATOR:

(Refer to FIG. 1)

1. Start the machine and lower the main brush to the floor.
2. Open the RH side panel. (Refer to FIG. 1)
3. Disconnect the main brush lift cable from the main brush arm. (Refer to FIG. 1)
4. Raise the main brush lift actuator. (Refer to FIG. 1)
5. Make sure the debris hopper is empty.
6. Raise the hopper and engage the prop arm.

FOR SAFETY: Before Leaving Or Servicing Machine; Stop On Level Surface, Set Parking Brake, Turn Off Machine And Remove Key.

7. Open the main cover and unplug the battery connector.



WARNING: Always disconnect battery cables from machine before working on electrical components.

8. Unplug the main brush lift actuator from the main harness. (Refer to FIG. 1)
9. Remove the hex screw from the top of the main brush lift actuator. (Refer to FIG. 1)

10. Pull the top of the lift actuator out of the mount bracket. (Refer to FIG. 1)
11. Remove the cotter pin and clevis pin from the tube end of the main brush lift actuator. Push the clevis pin in until the head hits the machine frame. (Refer to FIG. 1)
12. Pull the lift actuator and clevis pin up until the head of the clevis pin lines up with the large hole in the top of the pin slot. Remove the old actuator and clevis pin from the machine. (Refer to FIG. 1)
13. Position the new lift actuator (1) and clevis pin in the right side of the machine. Make sure the actuator is in the retracted position. (Refer to FIG. 1)
14. Make sure the head of the clevis pin is placed through the hole in the top of the slot. (Refer to FIG. 1)
15. Drop the actuator down until the motor end mount hole can be placed in the upper mount bracket. Install the mounting screw and firmly tighten. (Refer to FIG. 1)

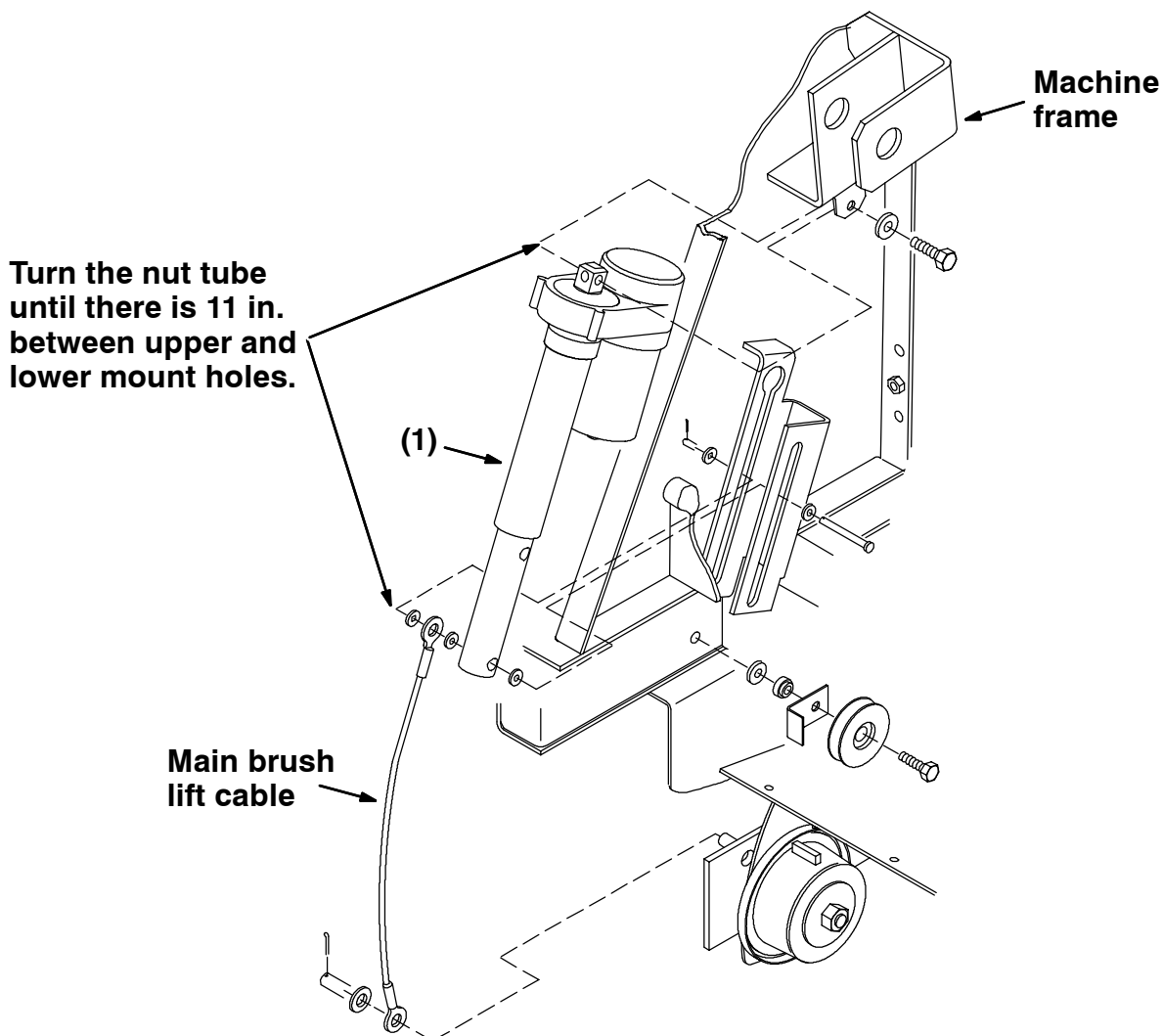


FIG. 1 - Main Brush Lift Actuator

16. Push the clevis pin through the slot and install the washer and hair pin. (Refer to FIG. 1)
17. Reconnect the lift actuator to the main harness.
18. Reconnect the battery connector.
19. Disengage the prop arm and lower the hopper.
20. Start the machine and operate the main brush up and down. Check for proper operation.

TO REPLACE SIDE BRUSH LIFT ACTUATOR:

(Refer to FIG. 2 and 3)

1. Make sure the debris hopper is empty.
2. Remove the side brush from the side brush motor. (Refer to FIG. 2 and 3)
3. Start the main brush and side brush. Let the side brush drop to the floor.
(Refer to FIG. 2 and 3)
4. Raise the hopper and engage the prop arm.
5. Remove the cotter pin and clevis pin from the tube end of the lift actuator where the lift cable is attached. (Refer to FIG. 2 and 3)

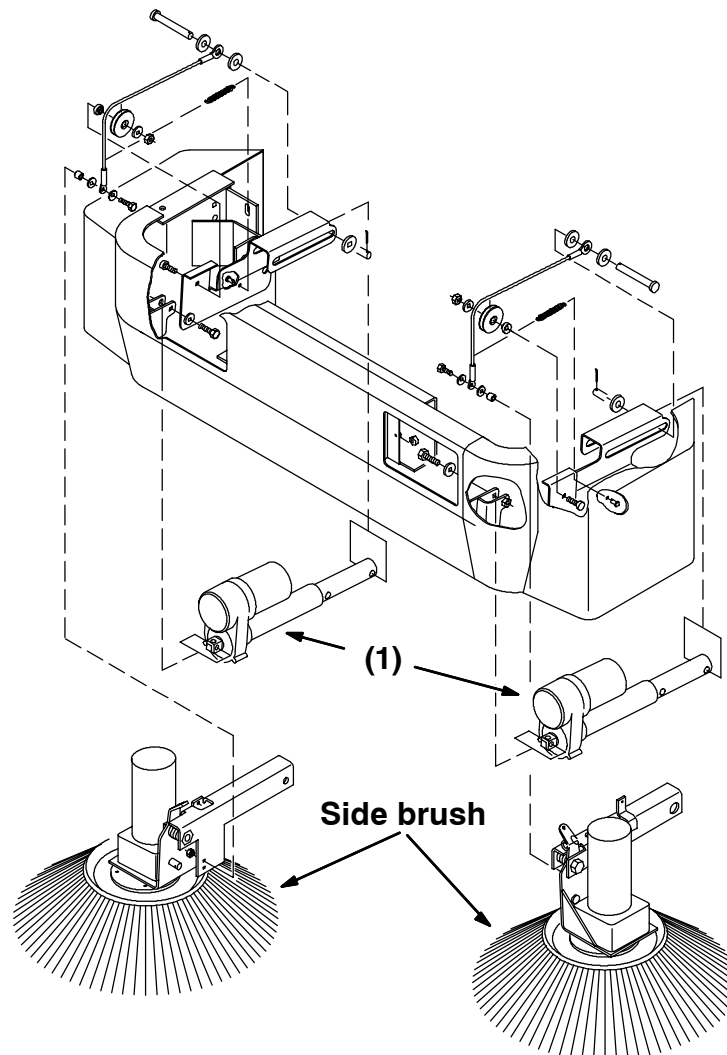


FIG. 2 - Side Brush Lift Actuator

6. Disengage the prop arm and lower the hopper.

FOR SAFETY: Before Leaving Or Servicing Machine; Stop On Level Surface, Set Parking Brake, Turn Off Machine And Remove Key.

7. Open the main cover and unplug the battery connector.

! WARNING: Always disconnect battery cables from machine before working on electrical components.

8. Open the hopper cover and locate the side brush lift actuator. (Refer to FIG. 2 and 3)
9. Remove the head light in front of the side brush actuator that needs changing.
(Refer to FIG. 2 and 3)
10. Disconnect the side brush lift actuator from the hopper harness. (Refer to FIG. 2 and 3)
11. Remove the hex screw from the motor end of the side brush lift actuator. (Refer to FIG. 2 and 3)
12. Remove the old actuator from the machine. (Refer to FIG. 2 and 3)
13. Position the new actuator (1) in the side brush area of the hopper bumper. The actuator motor end points to the front of the machine. Make sure the actuator is in the retracted position. (Refer to FIG. 2 and 3)
14. Install the hex bolt in the motor end of the side brush lift actuator. (Refer to FIG. 2 and 3)
15. Connect the new actuator to the main harness.

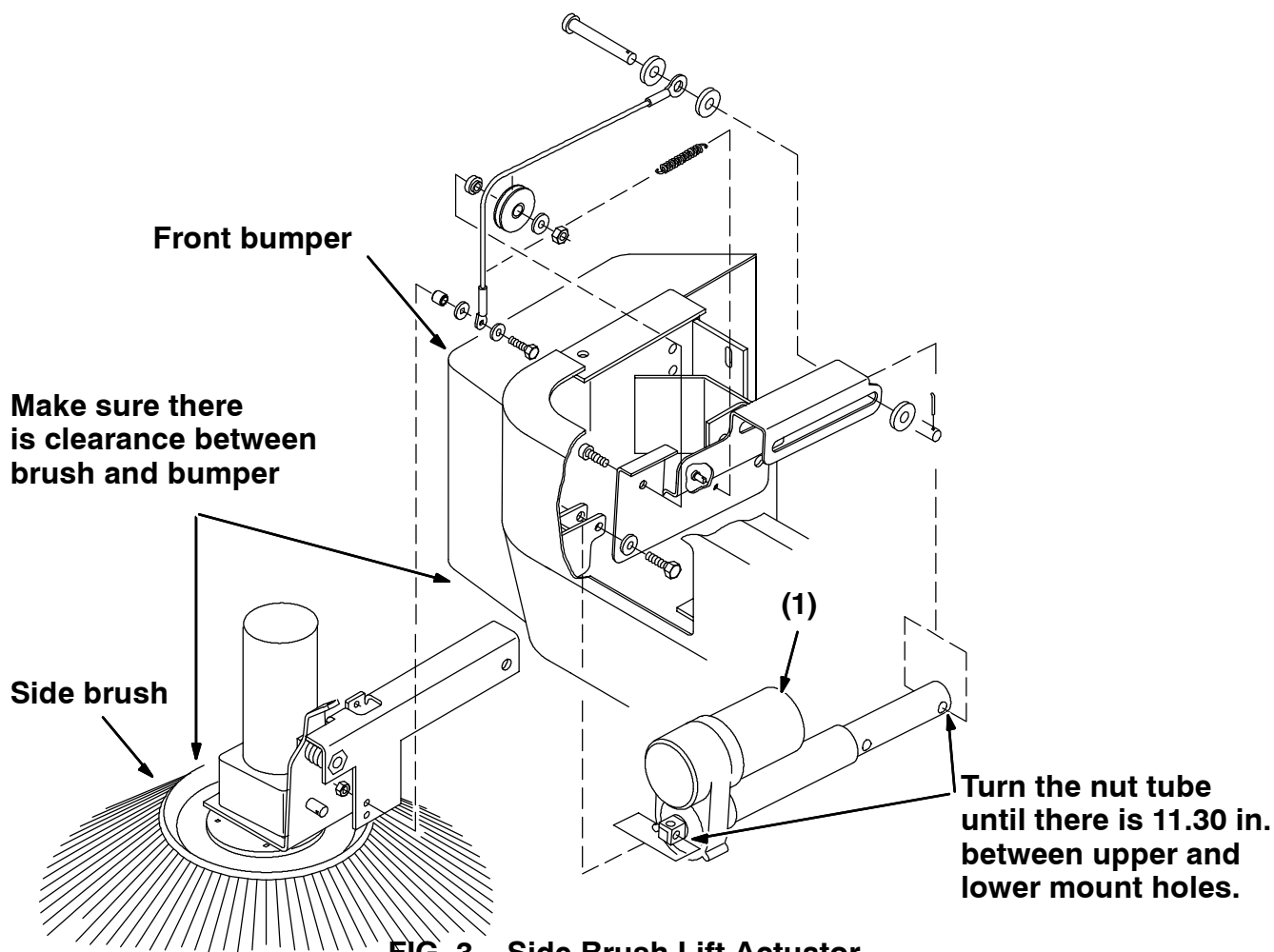


FIG. 3 - Side Brush Lift Actuator

NOTE: IF THE SIDE BRUSH BACK INTERFERES WITH THE BUMPER IN THE UP POSITION--RE-ADJUST THE ACTUATOR BY TURNING THE NUT INWARD. DO NOT TURN THE NUT TO FAR--THE CABLE MOUNT PIN MUST BE FREE AND NOT BINDING WHEN THE ACTUATOR IS RETRACTED.

16.Reinstall the head light. (Refer to FIG. 2 and 3)

17.Close the hopper cover and engage the rubber latches.

18.Raise the hopper and engage the prop arm.

19.Install the clevis pin and cotter pin in the tube end of the side brush lift actuator.
(Refer to FIG. 2 and 3)

20.Disengage the prop arm and lower the hopper.

21.Reconnect the battery connector.

22.Start the machine and operate the side brush up and down. Check for proper operation.

TO REPLACE DUMP DOOR ACTUATOR:

(Refer to FIG. 4 and 5)

1. Make sure the debris hopper is empty.
2. Raise the hopper and engage the prop arm.
3. Open the dump door.

FOR SAFETY: Before Leaving Or Servicing Machine; Stop On Level Surface, Set Parking Brake, Turn Off Machine And Remove Key.

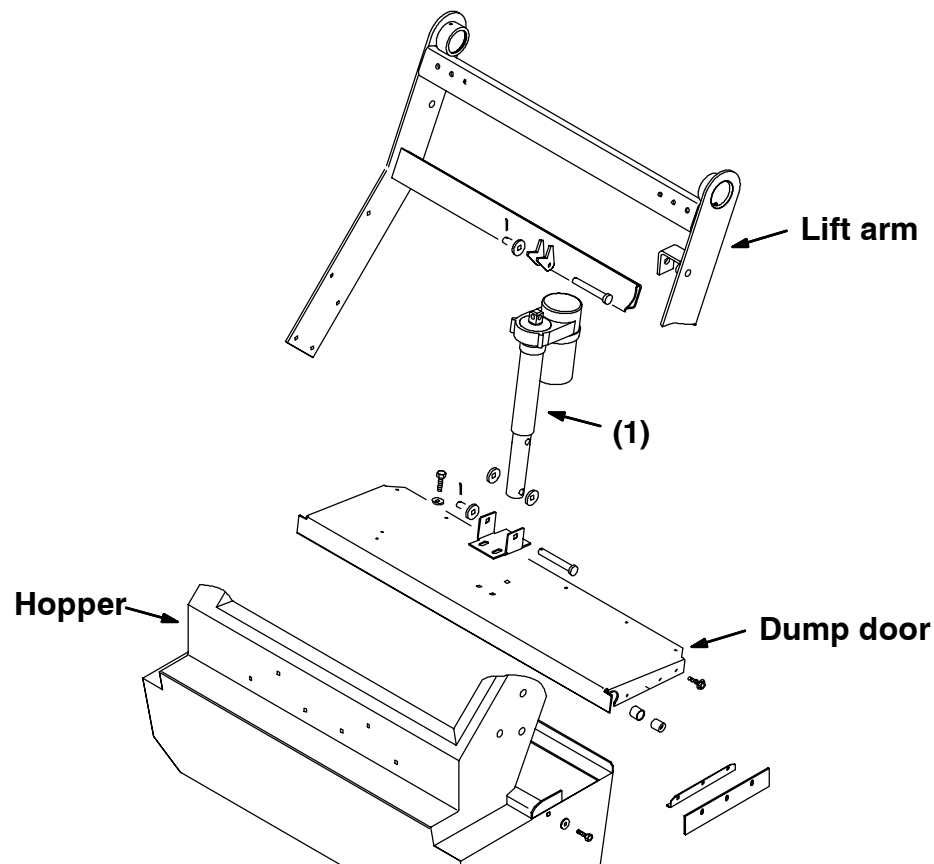


FIG. 4 - Dump Door Actuator

4. Open the main cover and unplug the battery connector.

FOR SAFETY: Disconnect Battery Connections Before Working On Machine.

5. Disconnect the hopper dump door actuator from the hopper harness.
6. Remove the clevis pin from the tube end of the dump door actuator. (Refer to FIG. 4 and 5)
7. Remove the hex screw from the motor end of the dump door actuator. (Refer to FIG. 4 and 5)
8. Remove the old dump door actuator from the hopper. (Refer to FIG. 4 and 5)
9. Position the new actuator (1) on the back of the hopper. The actuator motor end points to the top of the hopper. Make sure the actuator is in the extended position.
(Refer to FIG. 4 and 5)
10. Install the hex bolt in the motor end of the dump door actuator. (Refer to FIG. 4 and 5)
11. Install the clevis pin and cotter pin in the tube end of the dump door actuator. Make sure the dump door is in the closed position. Turn the tube to line up the mount holes.
(Refer to FIG. 4 and 5)

NOTE: If the actuator motor does not shut off in the extended position - - the motor will burn out or the circuit breaker will pop. To avoid this - - rotate the actuator tube clockwise or counterclockwise, in or out as necessary, until the length of the actuator is the correct length to activate the switch with the door open/closed.

12. Reconnect the dump door actuator to the hopper harness. (Refer to FIG. 4 and 5)
13. Reconnect the battery connector.
14. Disengage the prop arm and lower the hopper.
15. Start the machine and open and close the dump door. Check for proper operation.

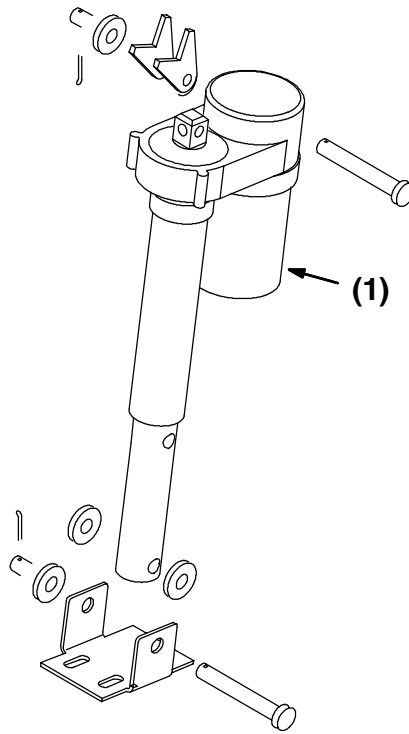


FIG. 5 - Dump Door Actuator

BILL OF MATERIALS FOR ACTUATOR REPLACEMENT KIT 363907

Ref.	TENNANT Part No.	Description	Qty.
1	363621	Actuator	1

TENNANT COMPANY
P. O. Box 1452
Minneapolis, MN 55440-1452