



INSTRUCTION BULLETIN

No. 340036

Machines: 355, 385, 7400,
8400, 8410

Published: 4-97/00

System: CHASSIS

NOTE: DO NOT DISCARD the Parts List from the Instruction Bulletin. Place the Parts List in the appropriate place in your machine manual for future reference. Retaining the Parts List will make it easier to reorder individual parts and will save you the cost of ordering an entire kit.

NOTE: Numbers in parenthesis () are reference numbers for parts listed in Bill of Materials.

Installation Instructions for Kit number 340036.

SYNOPSIS / PROBLEM:

This kit contains the parts needed to replace the shock absorber on the model 355, 385, 7400, 8400, and 8410 sweepers and/or scrubbers.

Please follow step-by-step instructions.

SPECIAL TOOLS / CONSIDERATIONS: None.

(Estimated time to complete: 1 hour).

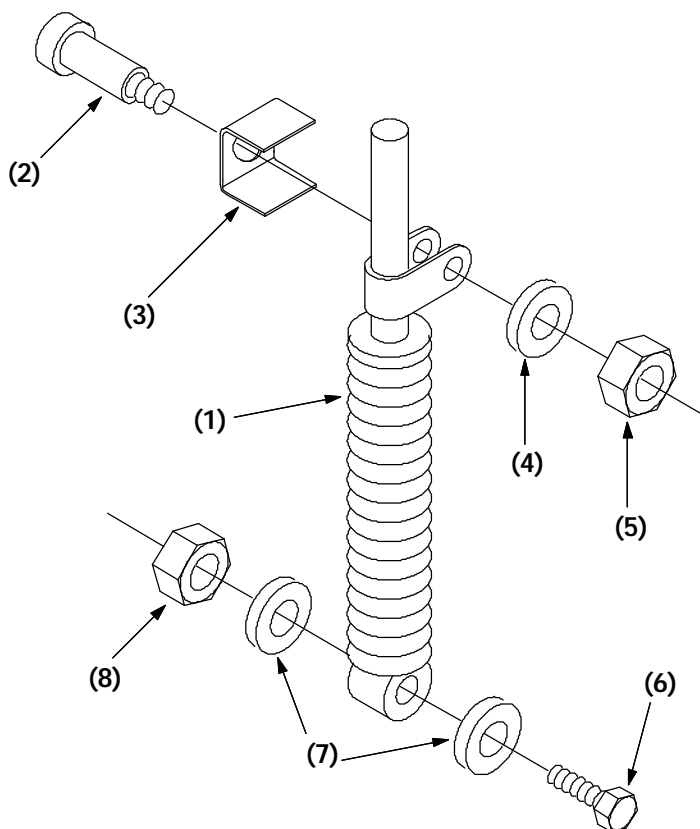


FIG. 1 - Installation of Retainer Bracket onto Shock Absorber

INSTALLATION OF SHOCK ABSORBER ON MODEL 355 / 385 MACHINES:

(Refer to FIG. 1 and 2)

1. Raise the hopper and engage the prop rod.

FOR SAFETY: Before leaving or servicing machine, stop on level surface and set parking brake. Then turn off machine and remove key.

2. Remove the front dust panel.
3. Locate the shock absorber (attached to directional lever and frame). (Refer to FIG. 2).

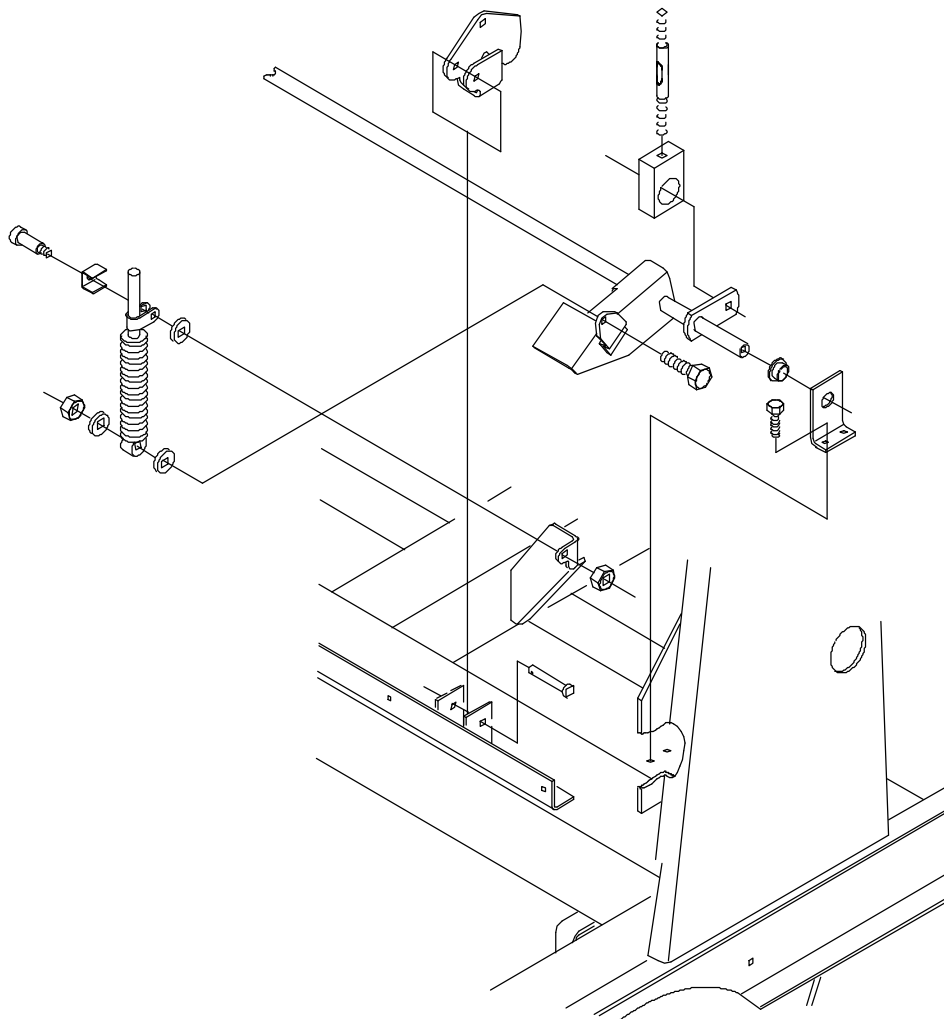


FIG. 2 - Installation of Shock Absorber for Models 355 / 385

4. Remove hardware and shock absorber. (Refer to FIG. 1 and 2).
5. Install new shock absorber (1) with hardware provided (2, 3, 4, 6, and 7). Tighten nuts (5 and 8). (Refer to FIG. 1 and 2).

NOTE: In this kit, a retainer bracket has replaced the first washer on the shoulder bolt.

6. Replace the front dust panel.
7. Disengage the prop rod and lower the hopper.

INSTALLATION OF SHOCK ABSORBER ON MODEL 7400 MACHINES:
(Refer to FIG. 1 and 3)

1. Lift the seat and engage prop rod.

FOR SAFETY: Before leaving or servicing machine, stop on level surface and set parking brake. Then turn off machine and remove key.

2. Raise the dust flap.
3. Locate the shock absorber (on front side of propel pump). (Refer to FIG. 1 and 3).

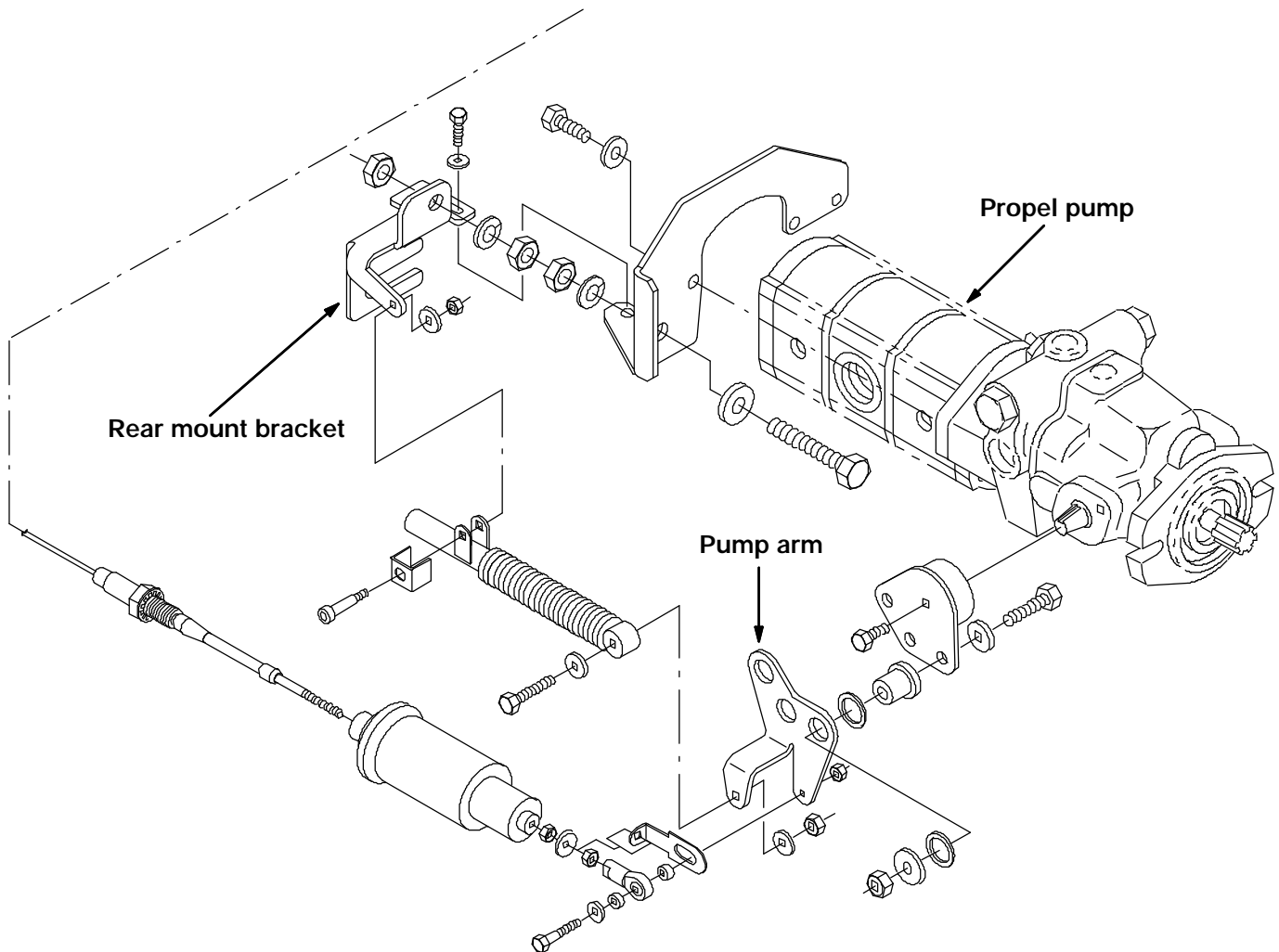


FIG. 3 - Installation of Shock Absorber for Model 7400

4. Install new shock absorber (1) with hardware provided (2, 3, 4, 6, and 7). Tighten nuts (5 and 8). (Refer to FIG. 1 and 3).

NOTE: In this kit, a retainer bracket has replaced the first washer on the shoulder bolt.

5. Lower the dust flap.
6. Disengage the prop rod and lower the seat.

INSTALLATION OF SHOCK ABSORBER ON MODEL 8400 / 8410 MACHINES:

(Refer to FIG. 1 and 4)

1. Lower and remove the rear squeegee assembly.

FOR SAFETY: Before leaving or servicing machine, stop on level surface and set parking brake. Then turn off machine and remove key.

2. Remove the left rear panel on the machine.
3. Locate the shock absorber (rear of machine, underneath the radiator).

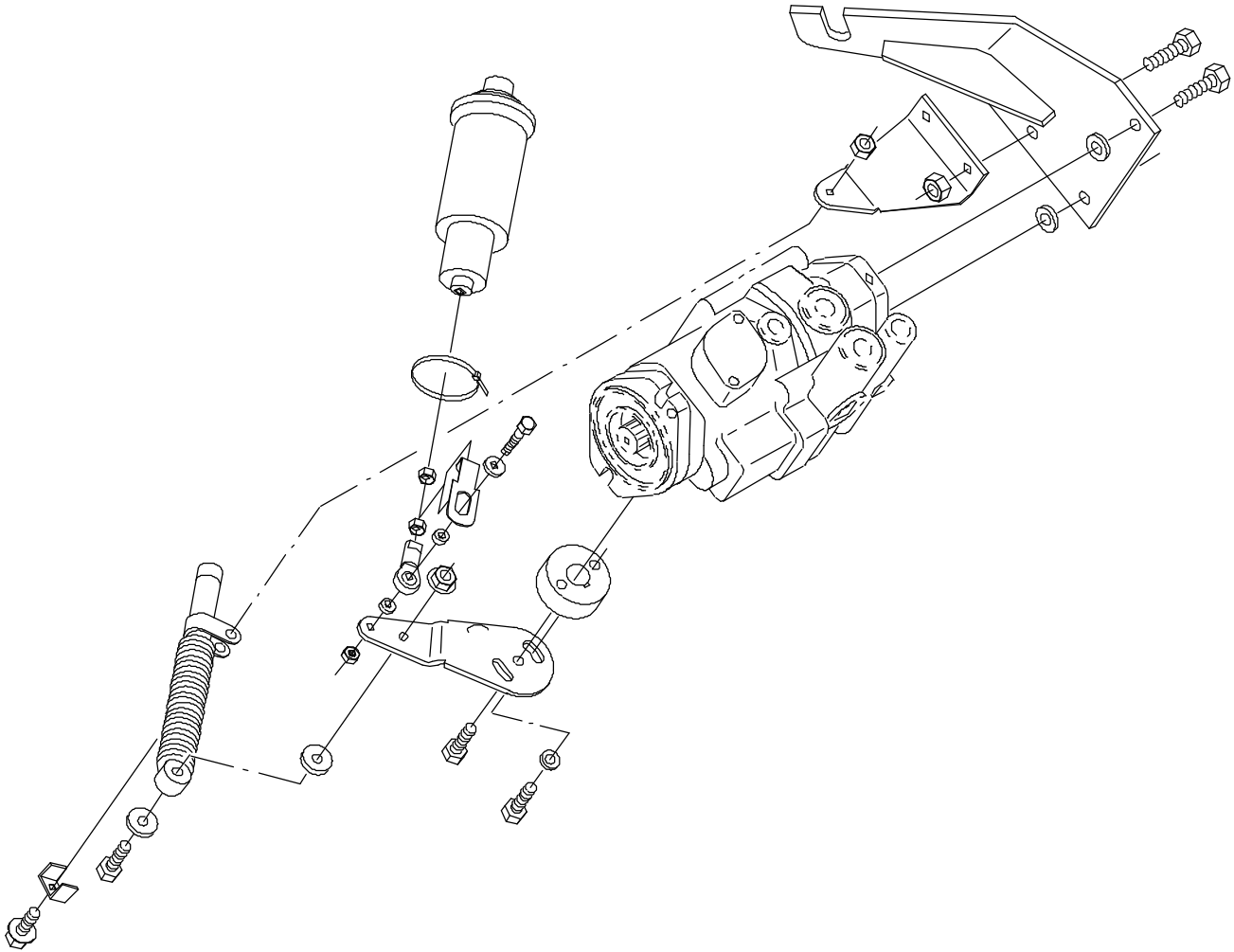


FIG. 4 - Installation of Shock Absorber for Models 8400 / 8410

4. Remove hardware and shock absorber. (Refer to FIG. 1 and 4).
5. Install new shock absorber (1) with hardware provided (2, 3, 4, 6, and 7). Tighten nuts (5 and 8). (Refer to FIG. 1 and 4).

NOTE: In this kit, a retainer bracket has replaced the first washer on the shoulder bolt.

6. Install the rear panel.
7. Install the rear squeegee assembly.

BILL OF MATERIALS FOR KIT 340036

Ref.	TENNANT Part No.	Description	Qty.
1	73411	Shock absorber	1
2	16213	Bolt, shoulder .312D x 1.00L .25-20	1
3	84170	Bracket, retainer	1
4	01685	Washer, flat .31 SS	1
5	75934	Nut, hxlocnyln .25-29 thin pltd	1
6	09023	Screw, hexssm 8 x 1.25	1
7	01685	Washer, flat .31 SS	2
8	08713	Nut, hxlocnyln 8 x 1.25 Reg SS	1

TENNANT COMPANY
P. O. Box 1452
Minneapolis, MN 55440-1452