

BrainOS Release 2.10.0

Highlights

This document summarizes the key product enhancements and updates available in the Brain Corporation BrainOS 2.10.0 navigation software release.

New software releases download automatically to your machine(s), much like they would for your mobile device. After it downloads the software update completely, your machine will be able to take advantage of the updates listed in this document on the next machine power cycle.

While this document highlights the key changes in BrainOS release 2.10.0, the release contains additional back-end enhancements. For a more in-depth explanation of the product enhancements that you will now be able to take advantage of, or if you simply have questions about this release, we encourage you to contact your authorized account representative.

©2020 Brain Corporation. All rights reserved.

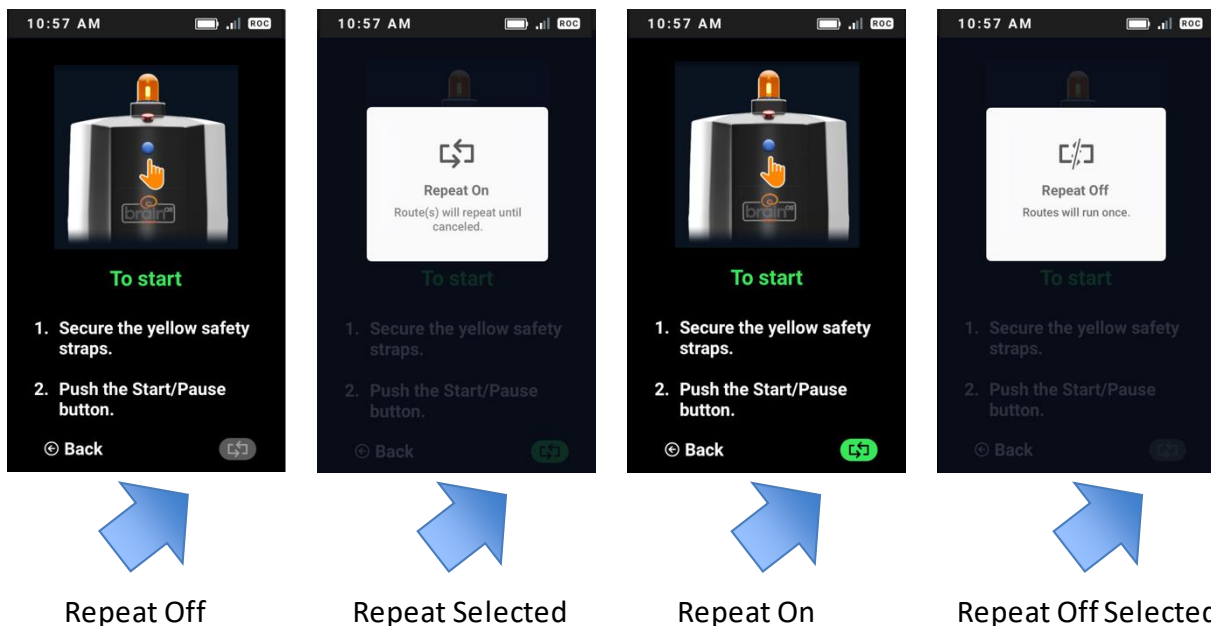
Highlights of BrainOS Release 2.10.0

Route Repeat

For greater operating convenience and improved cleaning effectiveness Route Repeat is now available. This new functionality allows operators to select a desired route and indicate Route Repeat – which will essentially create a continuous loop of the selected route, until the operator manually cancels that route. This feature can be especially helpful for geographies that experience inclement weather. Operators can train and continuously repeat a route for the front of a store - or any heavily traveled area - to remove snow and salt tracked in by patrons.

To end a route that has been selected for Route Repeat, operators simply cancel the route by pushing the Stop/Pause button or via any Alert screen on the user interface. Because Route Repeat creates a continuous looping function, operators are highly encouraged to set a timer after they engage the route to ensure consistent checks of the machine's water and battery levels.

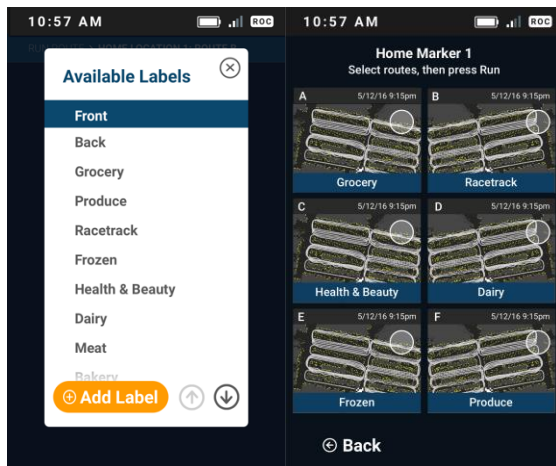
Route Repeat screen example



Updated Route Labels

To provide greater operating clarity and enhance the user experience a number of previously generic route labels have been replaced with grocery and retail focused labels. For example, route labels such as Right, Left, Daily, etc. have been replaced with labels such as Grocery, Produce, Health & Beauty, etc. These new labels allow users to select from a host of industry standard store descriptors to more accurately label corresponding trained routes.

Updated Route Labels screen example

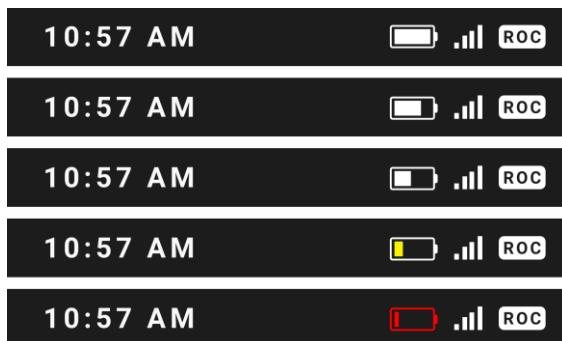


Additional Updates in Release 2.10.0

User Interface Update – Battery Status Indicator

In order to reduce confusion over fluctuating battery percentage estimates, the battery percentage indicator has been eliminated. Estimated battery life status is now indicated via a dynamic 'battery' icon that shortens as battery charge diminishes, representing approximately 100%, 75%, 50%, and 25% battery charge levels.

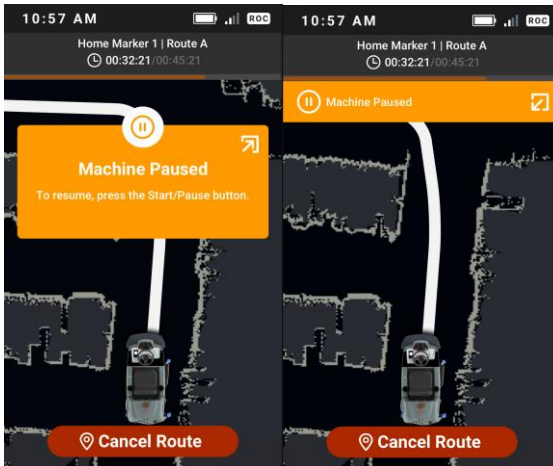
Battery Status Indicator screen example



User Interface Enhancement: Pause Screen

To provide greater operating clarity the “Pause Screen” on the user interface has been improved to better visually contextualize where the machine has paused, along a given route. The new zoomed-in view of the path is designed to help operators navigate around obstacles and crowds when necessary, then get back on the path to resume autonomous operation. This enhancement better aligns with previous improvements to Assist screens to provide a similar level of detail and visual context.

Updated Pause Screen user interface example



Extended Motion Timeout for Assists

In order to enhance operating efficiency in heavily trafficked environments, the duration of time before a machine will notify for an assist has been extended. If a machine detects movement when its path is blocked, the machine will now wait longer (up to a maximum of 90 seconds) before calling for an assist, in the hopes that the path clears up. This enhancement allows more time for many common situations encountered, such as people and carts, to resolve themselves before an assist might be needed.